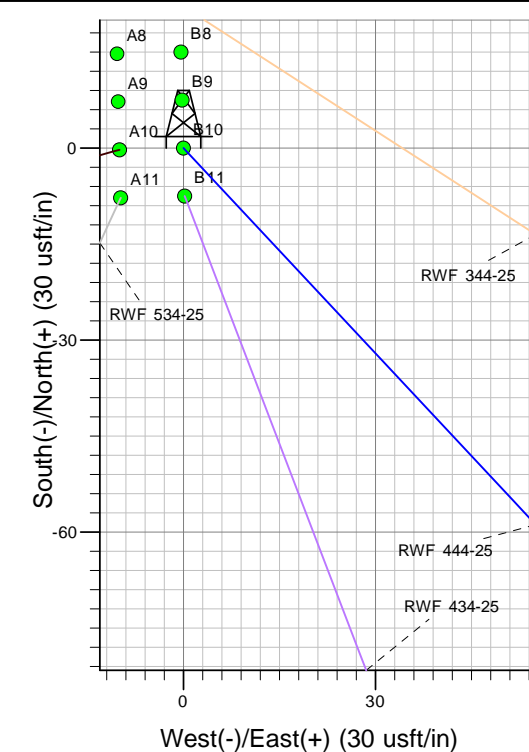
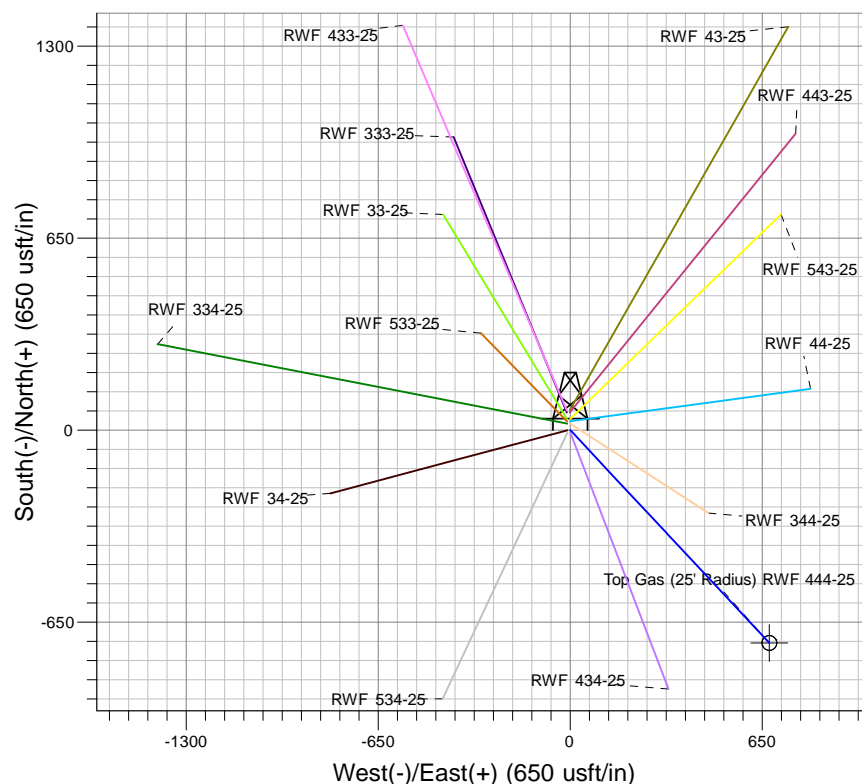
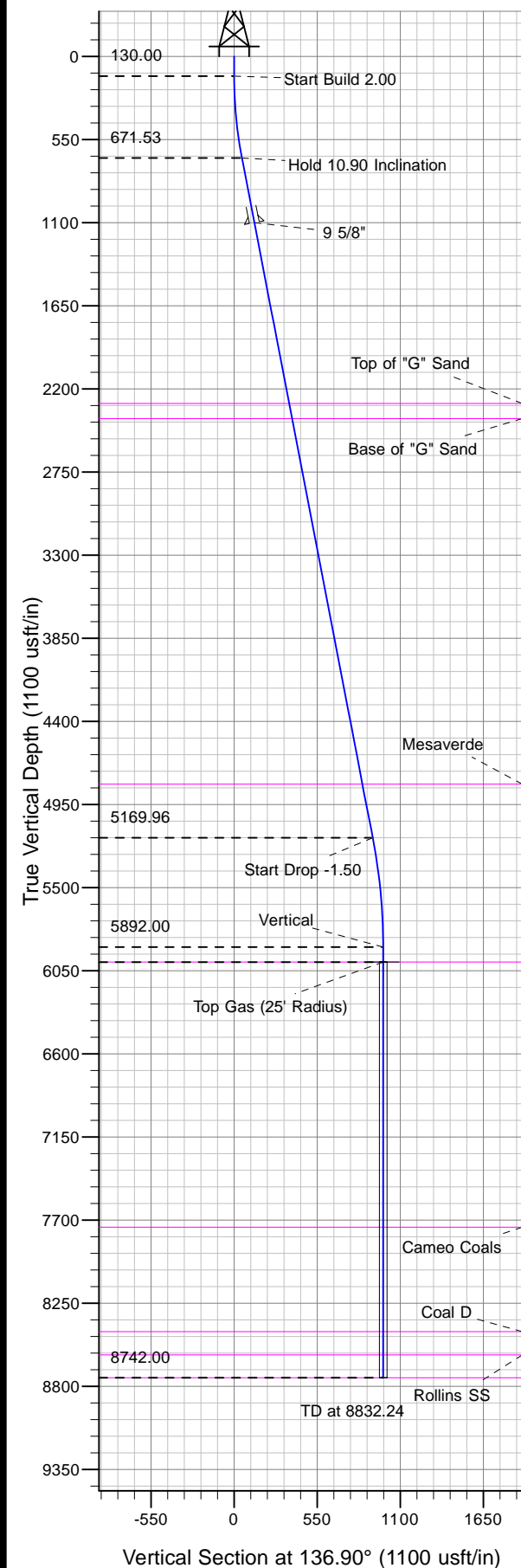




Well Name: RWF 444-25
Surface Location: RWF 43-25 Pad
North American Datum 1983 , US State Plane 1983, Colorado Central Zone
Ground Elevation: 6234.00

+N/-S	+E/-W	Northing	Easting	Latitude	Longitude	Slot
0.00	0.00	1612751.60	2342025.70	39.49260	-107.83173	B10

KELLY BUSHING @ 6260.00usft (Nabors 574)



Project: RU 25-06S-094W
Site: RWF 43-25 Pad
Well: RWF 444-25
Design #2 05Feb13 kjs



Azimuths to True North
Magnetic North: 10.09°

Magnetic Field
Strength: 52116.4snT
Dip Angle: 65.73°
Date: 12/13/2012
Model: IGRF2010

ANNOTATIONS

MD	Inc	Azi	TVD	+N/-S	+E/-W	Vsect	Departure	Annotation
130.00	0.00	0.00	130.00	0.00	0.00	0.00	0.00	Start Build 2.00
674.81	10.90	136.90	671.53	-37.71	35.29	51.65	51.65	Hold 10.90 Inclination
5255.83	10.90	136.90	5169.96	-670.04	626.92	917.59	917.59	Start Drop -1.50
5982.24	0.00	0.00	5892.00	-720.32	673.97	986.46	986.46	Vertical
6082.24	0.00	0.00	5992.00	-720.32	673.97	986.46	986.46	Mesaverde
8832.24	0.00	0.00	8742.00	-720.32	673.97	986.46	986.46	TD at 8832.24