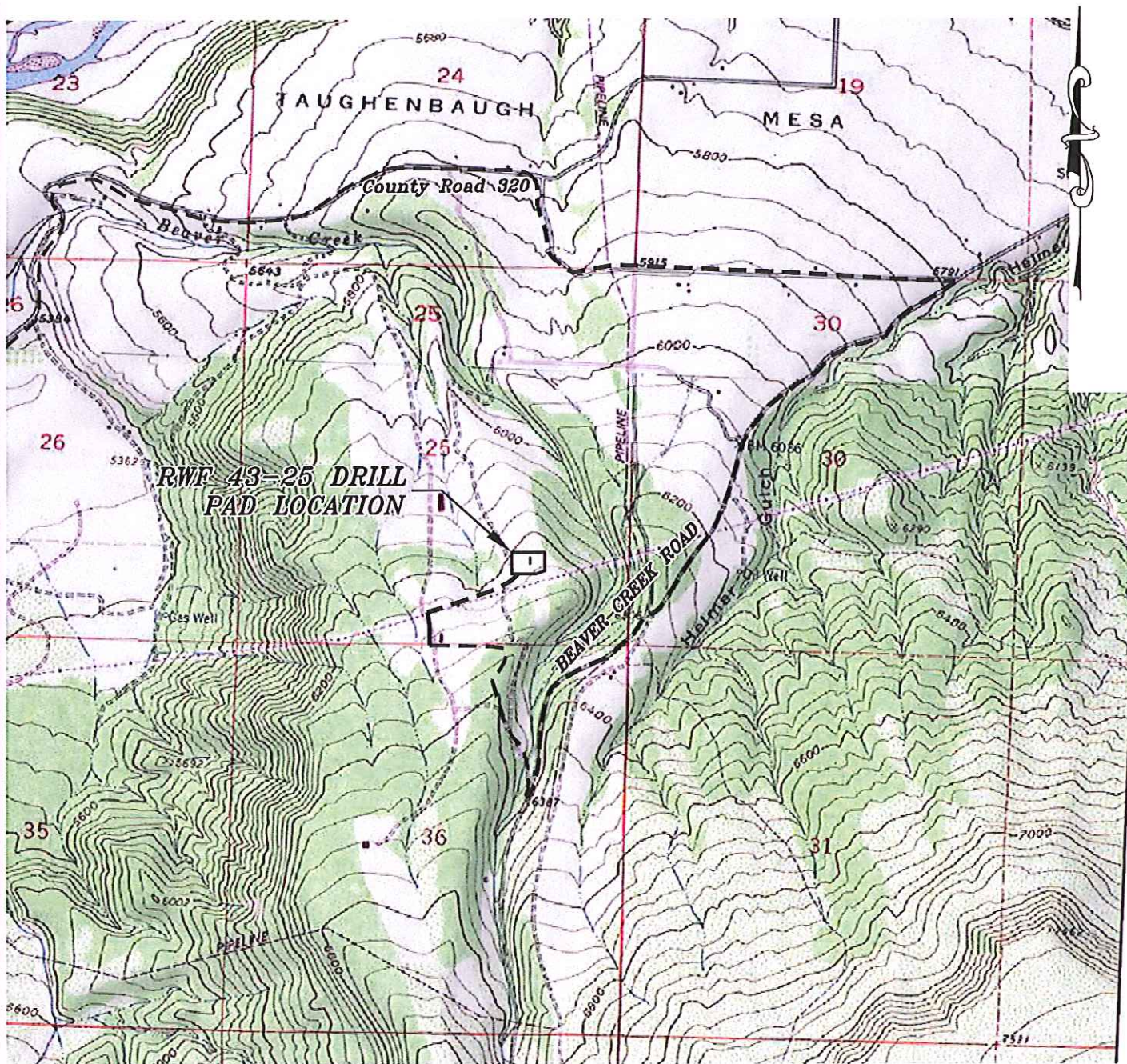


Section 25
T. 6 S., R. 95 W.



1000 0 2000
GRAPHIC SCALE IN FEET
1 INCH = 2000 FEET

ACCESS DESCRIPTION:

FROM THE INTERSECTION OF STATE HIGHWAY 6 AND COUNTY ROAD 323 NORTH OF RULISON, PROCEED SOUTHERLY ALONG COUNTY ROAD 323 ± 1.1 MILES TO THE INTERSECTION WITH COUNTY ROAD 309, PROCEED LEFT IN AN EASTERLY DIRECTION ± 2.3 MILES TO THE INTERSECTION WITH COUNTY ROAD 320, PROCEED RIGHT IN AN EASTERLY DIRECTION ± 6.1 MILES TO THE INTERSECTION WITH COUNTY ROAD 317 (Beaver Creek Road), PROCEED RIGHT IN A SOUTHERLY DIRECTION ± 1.7 MILES TO THE INTERSECTION WITH A DIRT/GRAVEL ROAD, PROCEED RIGHT IN AN WESTERLY DIRECTION ± 0.6 MILES TO AN INTERSECTION WITH A DIRT/GRAVEL ROAD, PROCEED RIGHT IN A NORTHERLY DIRECTION ± 0.4 MILES TO THE RWF 43-25 DRILL PAD LOCATION, AS SHOWN HEREON.

136 East Third Street
Rifle, Colorado 81650
Ph. (970) 625-2720
Fax (970) 625-2773



BOOKCLIFF
Survey Services, Inc.

SCALE: 1" = 2000'
DATE: 11/14/13
PLAT: 5 of 7
PROJECT: WPX Valley
DFT: cws

Construction Plan Prepared for:
WPXENERGY WPX Energy Rocky Mountain, LLC

RWF 43-25 Drill Pad - Plat 5
ACCESS ROAD & TOPO MAP