

Lat40°, Inc. 1635 Foxtrail Drive, Suite 325 Loveland, CO 970-776-3321

LOCATION PICTURES

TREBOR B11-65-1HN PAD

SECTION: 11
TOWNSHIP: 5N
RANGE: 64W

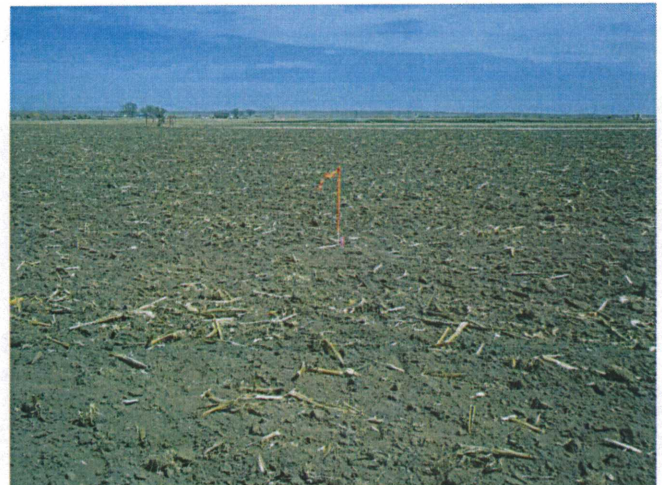
DATE: 4/5/2012



VIEW NORTH



VIEW WEST



VIEW EAST



VIEW SOUTH

DATE: rev.9/16/2012
PROJECT#: 2012029