



CEMENT BOND LOG

Mesa Wireline

Company	ENCANA OIL & GAS (USA) INC.		
Well	IONE 4-8-2		
Field	WATTENBERG		
County	WELD		
State	COLORADO		
Company ENCANA OIL & GAS (USA) INC.		Location: API # : 05-123-31390-0000	
Well IONE 4-8-2		Other Services NONE	
Field WATTENBERG		SEC. 2 TWP. 2N RGE. 66W	
County WELD		State COLORADO	
Permanent Datum GROUND LEVEL		Elevation 5048'	
Log Measured From KELLY BUSHING = 13'		K.B. 5061'	
Drilling Measured From KELLY BUSHING		D.F. 5062'	
		G.L. 5048'	

Date	30 JANUARY 2013									
Run Number	ONE									
Depth Driller	8393'									
Depth Logger	8344'									
Bottom Logged Interval	8344'									
Top Log Interval	600'									
Open Hole Size	7.875"									
Type Fluid	WATER									
Density / Viscosity	~8.34 LBS/GAL									
Max. Recorded Temp.	272 DEGF									
Estimated Cement Top	4174'									
Time Well Ready	N/A									
Time Logger on Bottom	N/A									
Equipment Number	WMO59 PD2									
Location	AULT, CO									
Recorded By	V.FULLER									
Witnessed By	T.MAJORS									
Borehole Record										
Run Number	Bit	From	To	Size	Weight	From	To			
ONE	12.25"	0'	888'							
TWO	7.875"	0'	8393'							
Tubing Record										
Casing Record	Size	Wd/Ft	Top	Bottom						
Surface String	8.625"	24#	0'	830'						
Prot. String										
Production String	4.50"	11.6#	0'	8326'						
Liner										

<<< Fold Here >>>

All interpretations are opinions based on inferences from electrical or other measurements and we cannot and do not guarantee the accuracy or correctness of any interpretation, and we shall not, except in the case of gross or willful negligence on our part, be liable or responsible for any loss, costs, damages, or expenses incurred or sustained by anyone resulting from any interpretation made by any of our officers, agents or employees. These interpretations are also subject to our general terms and conditions set out in our current Price Schedule.

Comments

LOG NOT CORRELATED TO ANY OTHER LOG
SHORT JOINT 7412' - 7432'

WE APPRECIATE YOUR BUSINESS, MESA WIRELINE LLC, Ault CO. (970) 834-2495



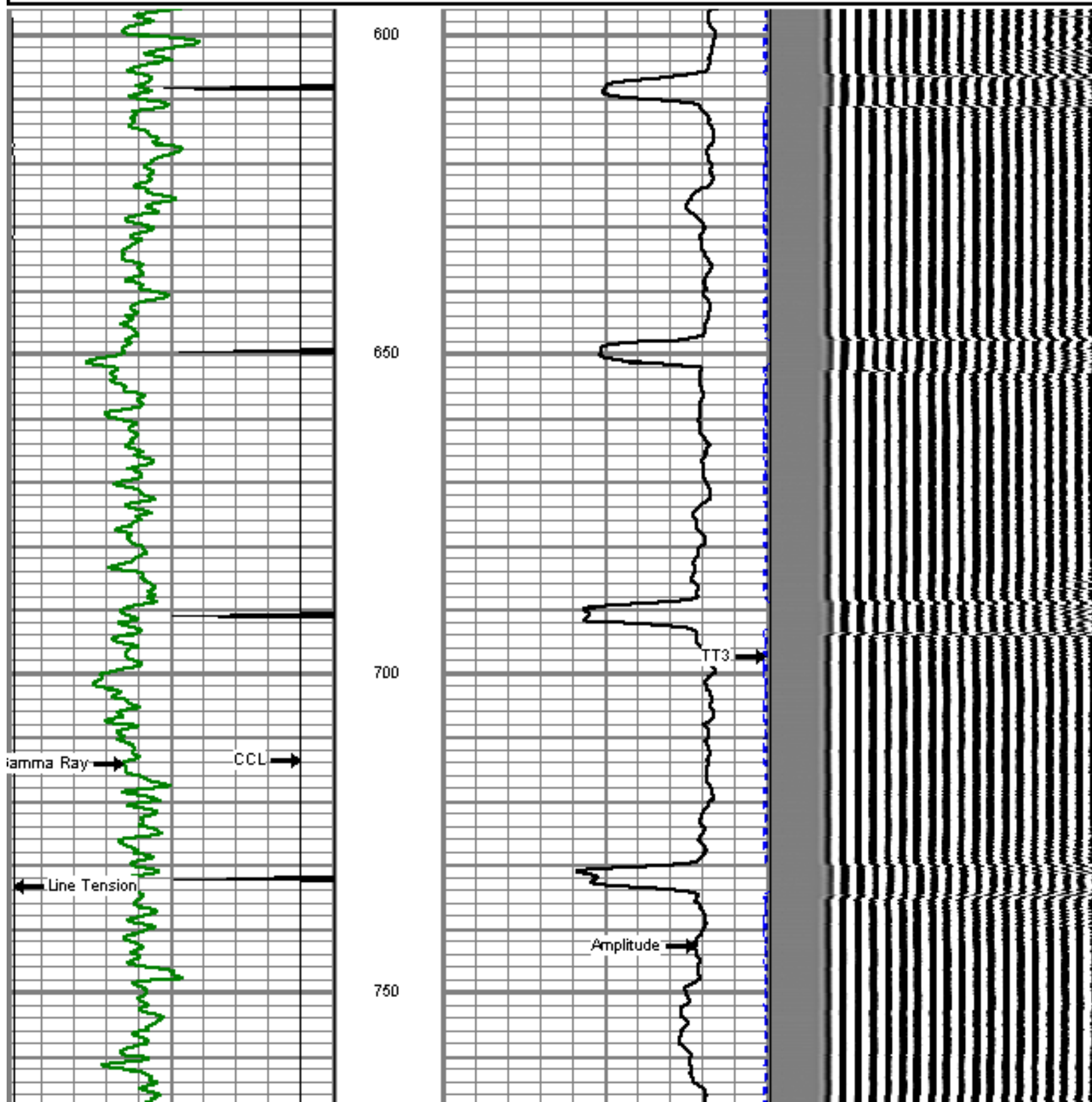
UPPER PASS

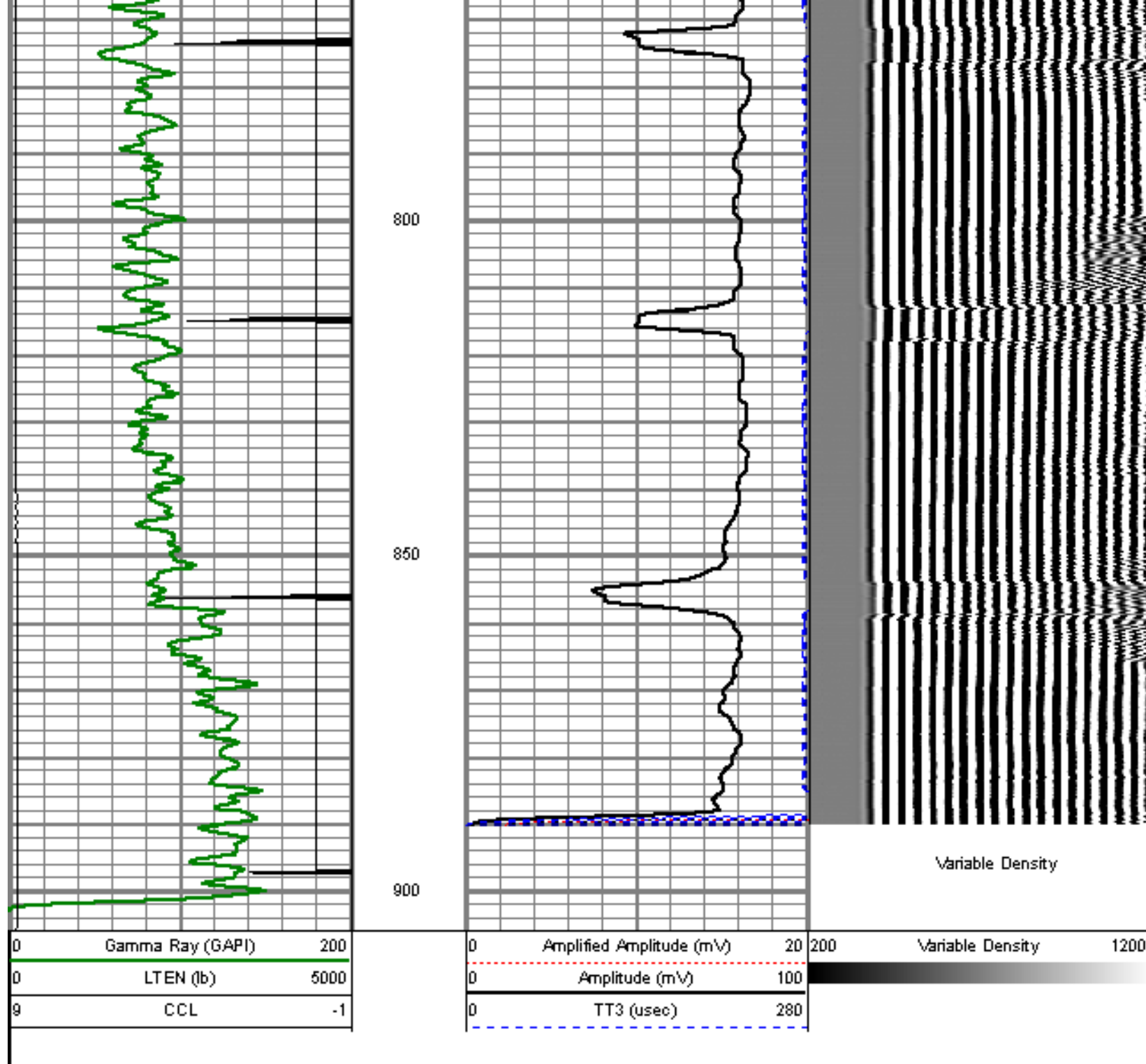
Database File: c:\documents and settings\xpouser\desktop\data\ione 4-8-2.db
 Dataset Pathname: pass18.1
 Presentation Format: dcbl_prb
 Dataset Creation: Thu Jan 31 12:26:45 2013 by Calc Std Casedhole 09061
 Charted by: Depth in Feet scaled 1:240

0	Gamma Ray (GAPI)	200
0	LTEN (lb)	5000
9	CCL	-1

0	Amplified Amplitude (mV)	20
0	Amplitude (mV)	100
0	TT3 (usec)	280

200 Variable Density 1200

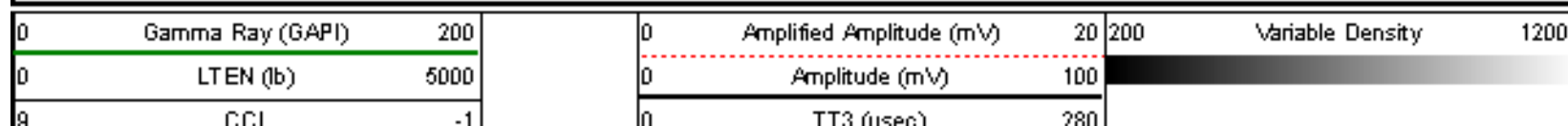


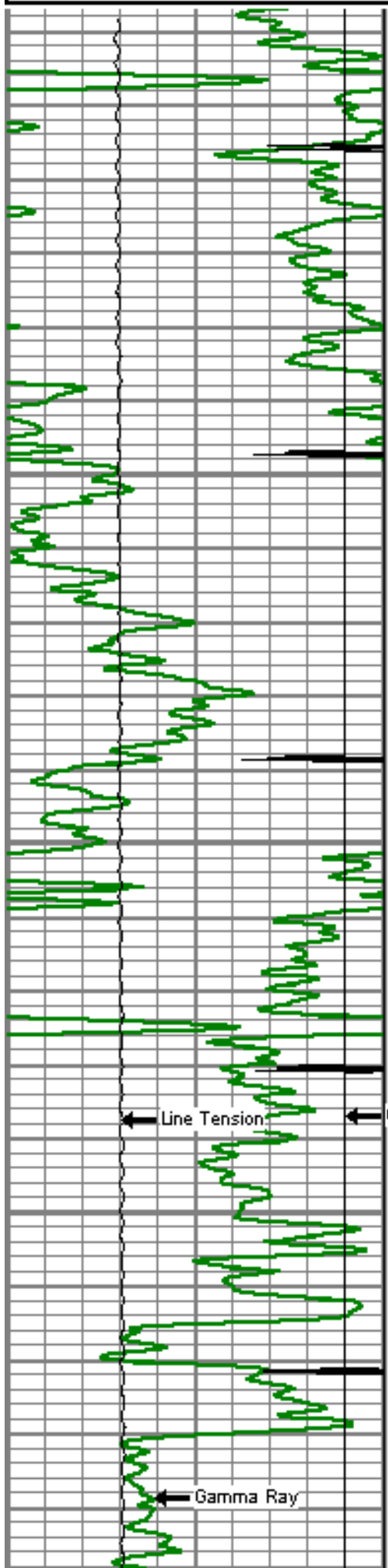


REPEAT PASS

5" = 100'

Database File: c:\documents and settings\xpouser\desktop\data\ione 4-8-2.db
 Dataset Pathname: pass13.2
 Presentation Format: dcbl_prb
 Dataset Creation: Thu Jan 31 12:11:17 2013 by Calc Std Casedhole 09061
 Charted by: Depth in Feet scaled 1:240





8050

8100

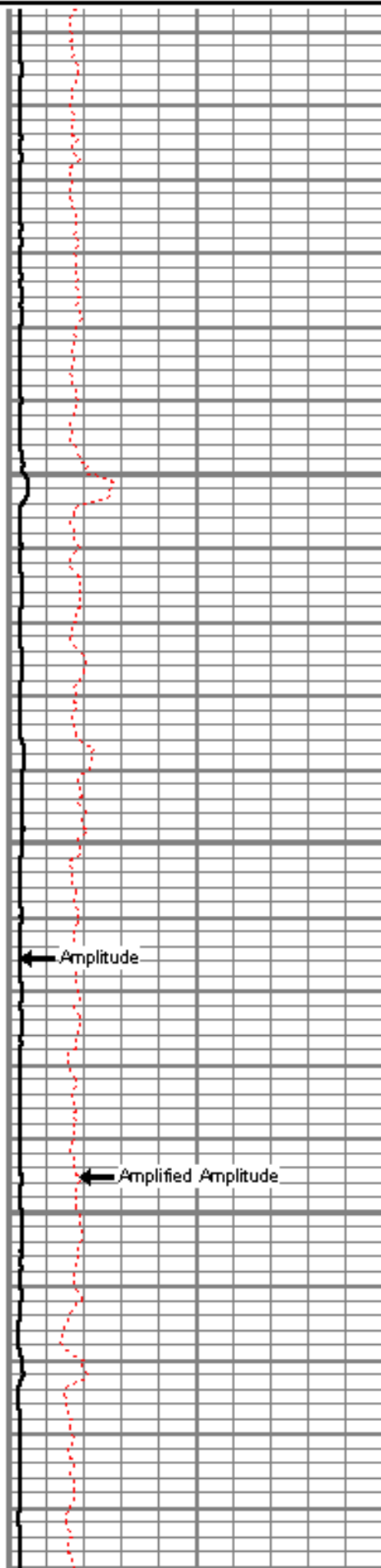
8150

8200

← Line Tension

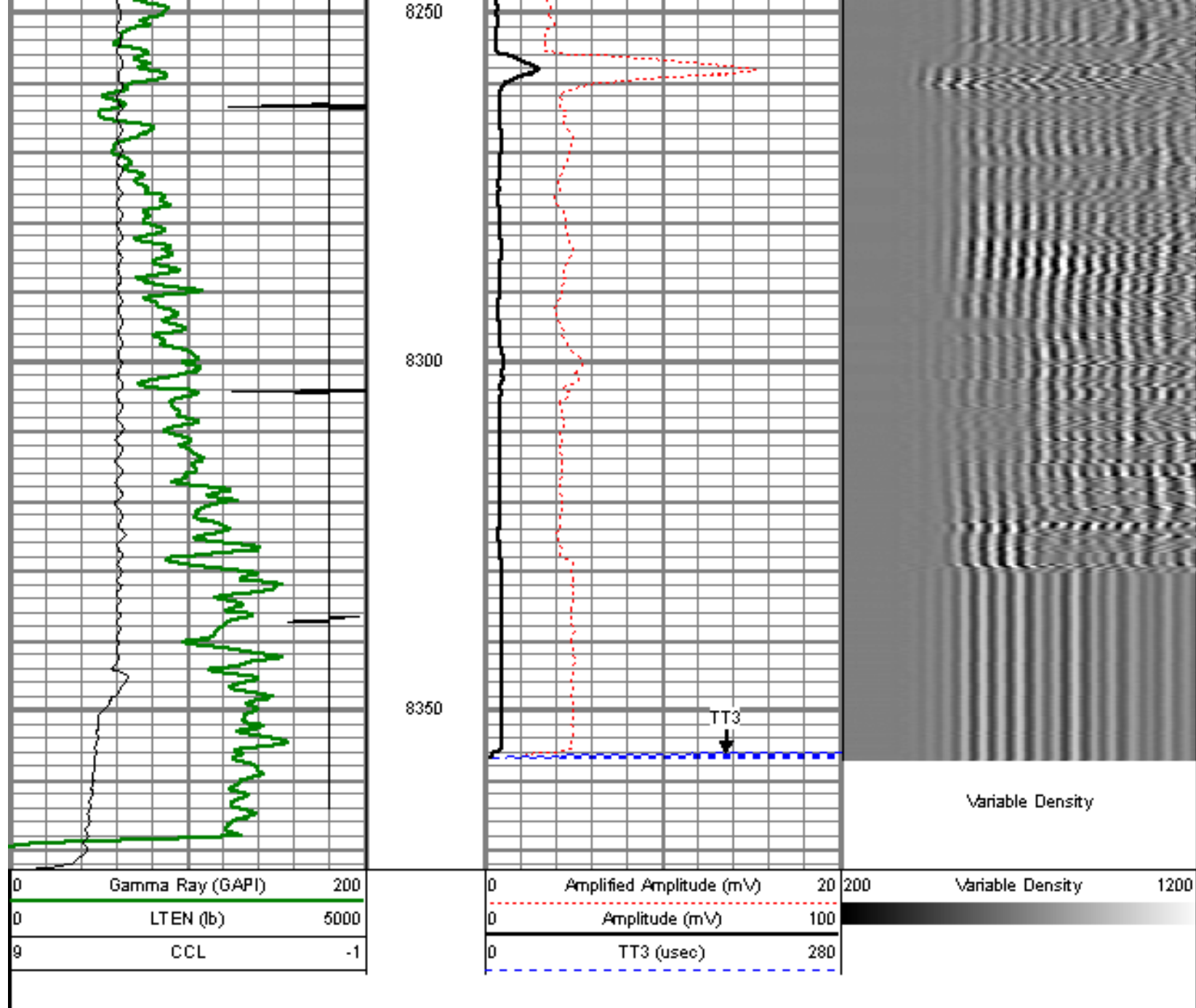
← CCL

← Gamma Ray



← Amplitude

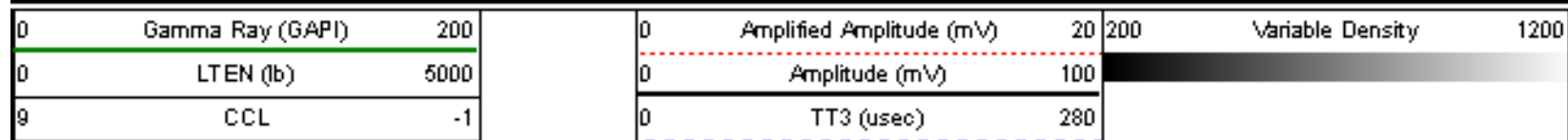
← Amplified Amplitude

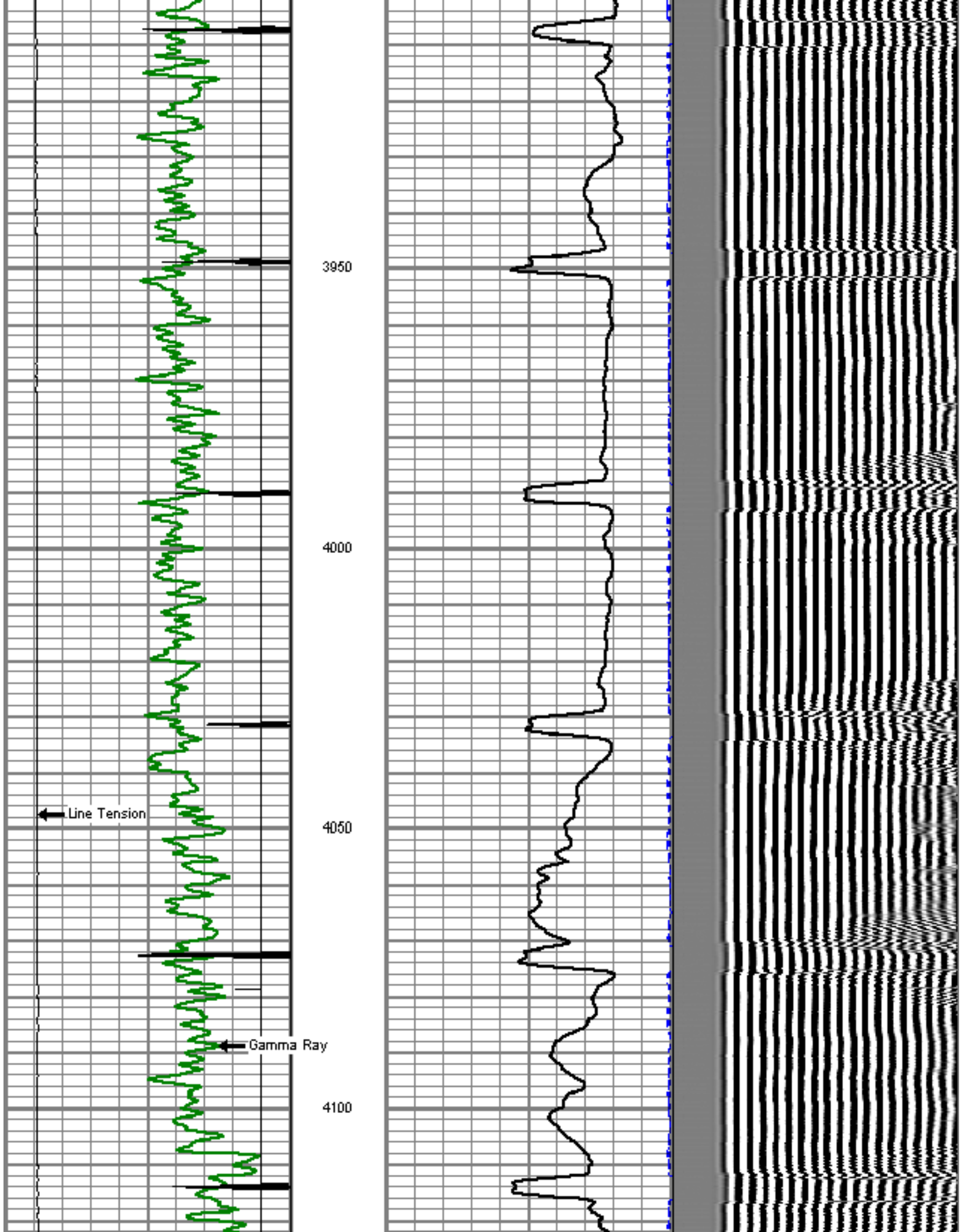


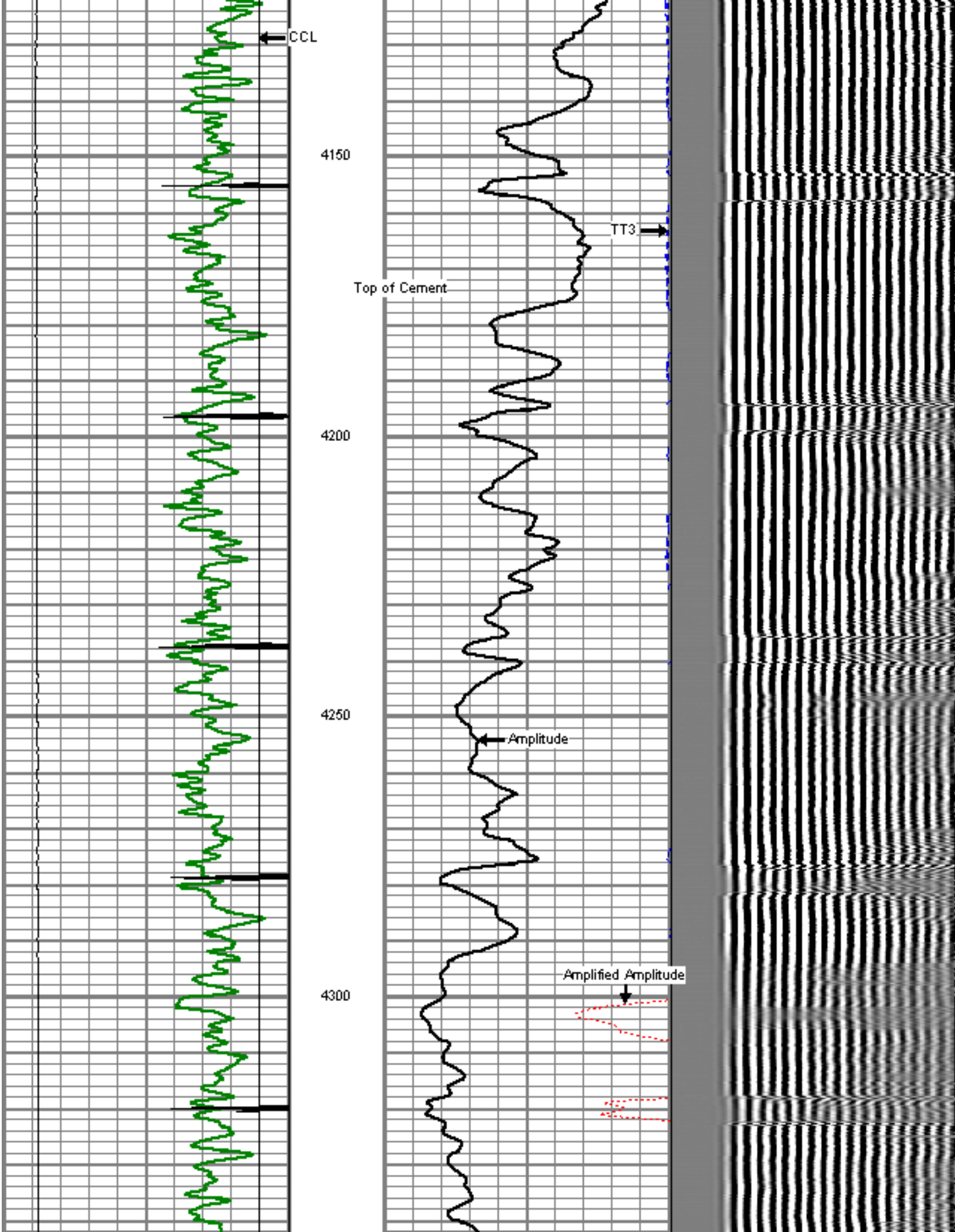
MAIN PASS

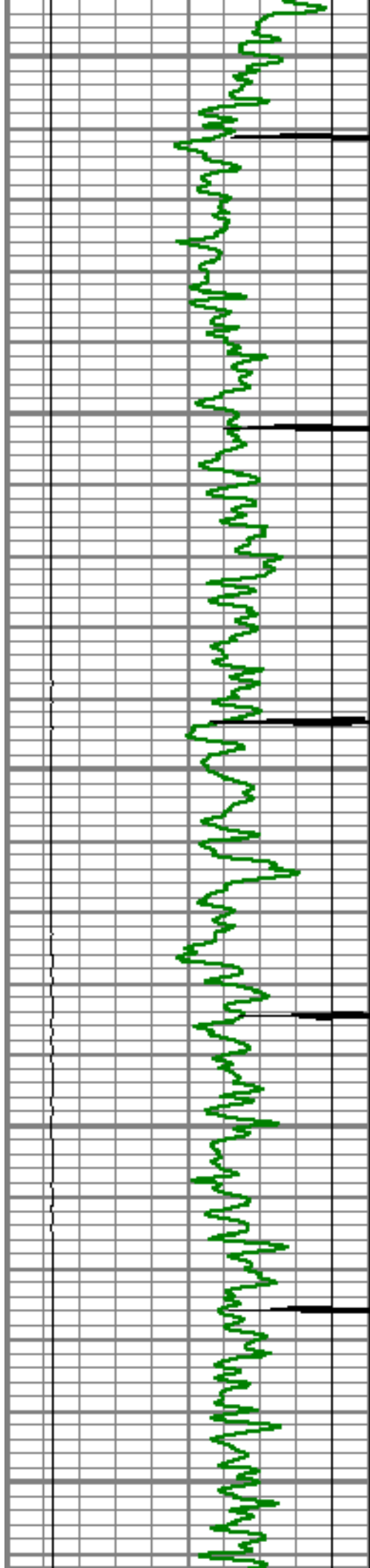
5" = 100'

Database File: c:\documents and settings\xpouser\desktop\data\ione 4-8-2.db
 Dataset Pathname: pass16.3
 Presentation Format: dcbl_prb
 Dataset Creation: Thu Jan 31 12:19:52 2013 by Calc Std Casedhole 09061
 Charted by: Depth in Feet scaled 1:240









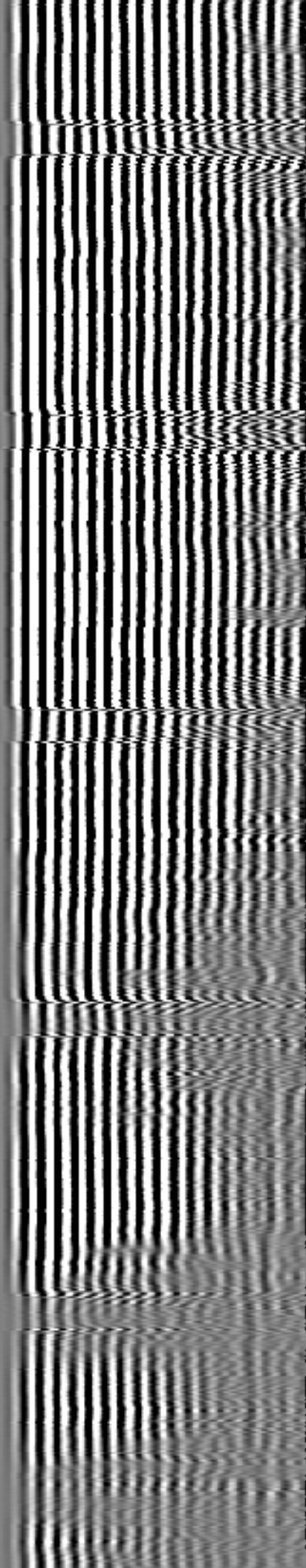
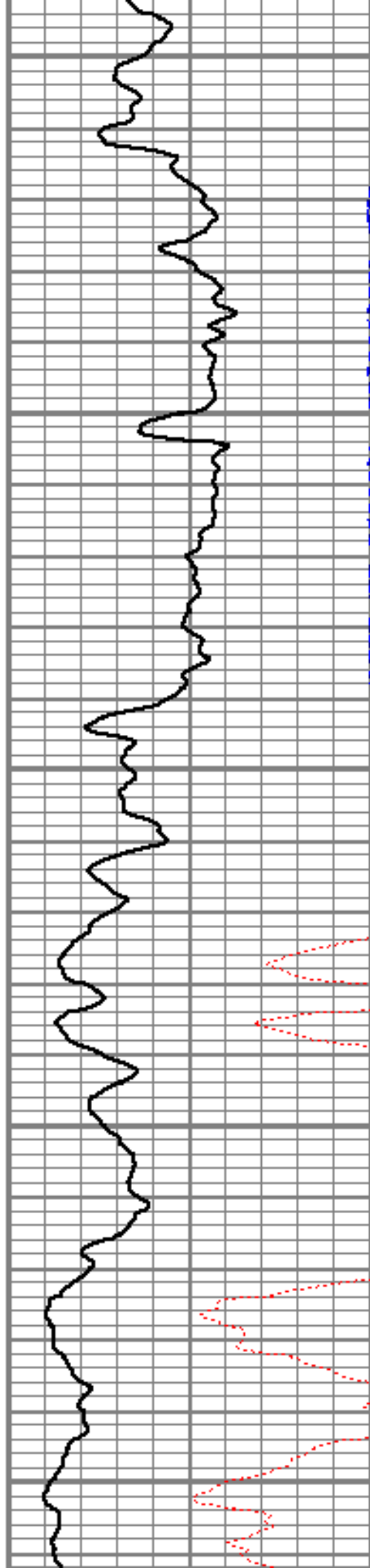
4350

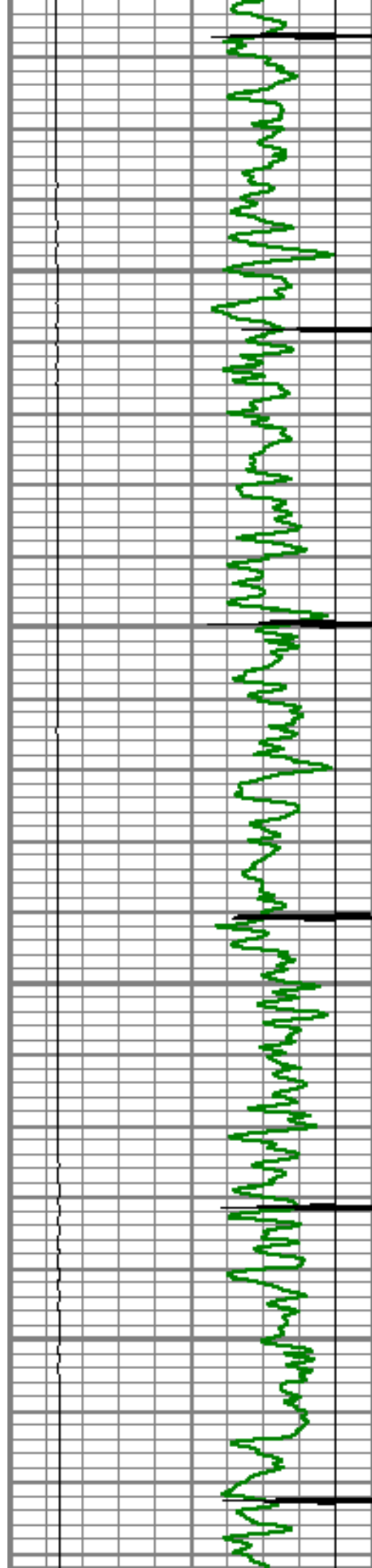
4400

4450

4500

4550



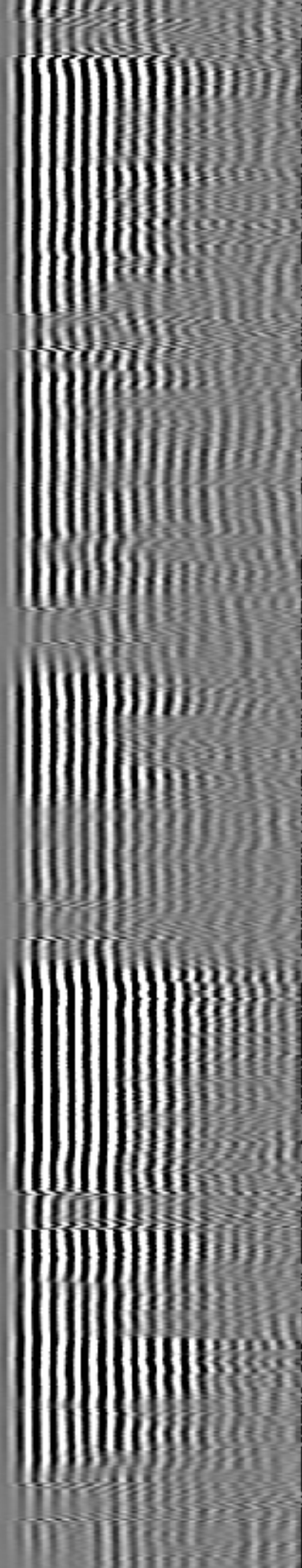
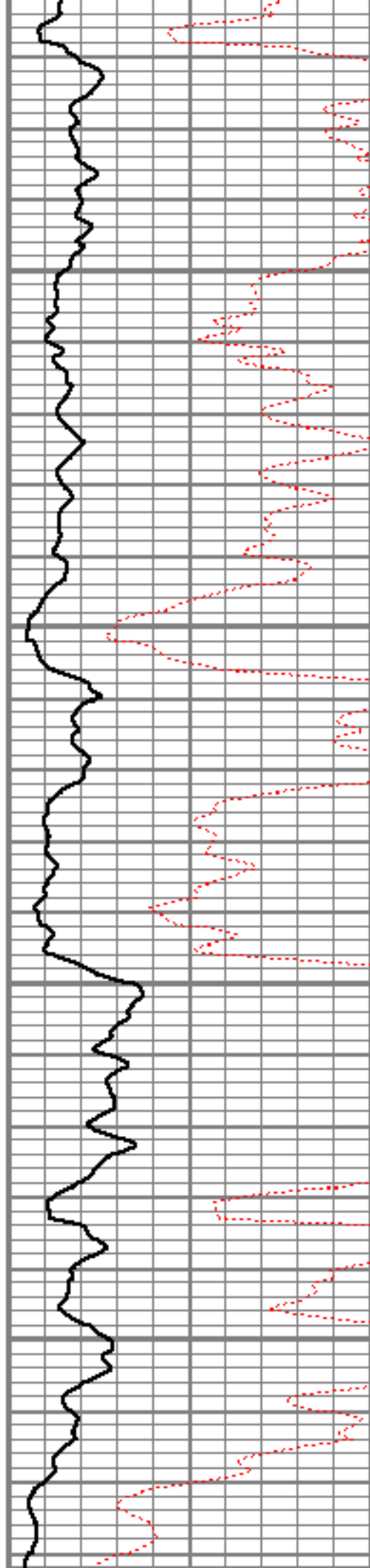


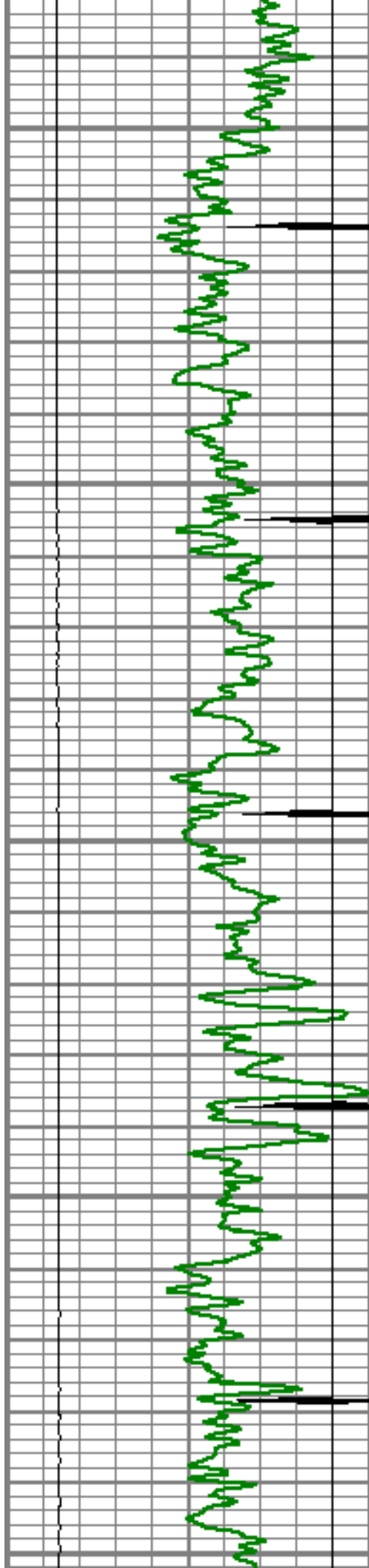
4600

4650

4700

4750





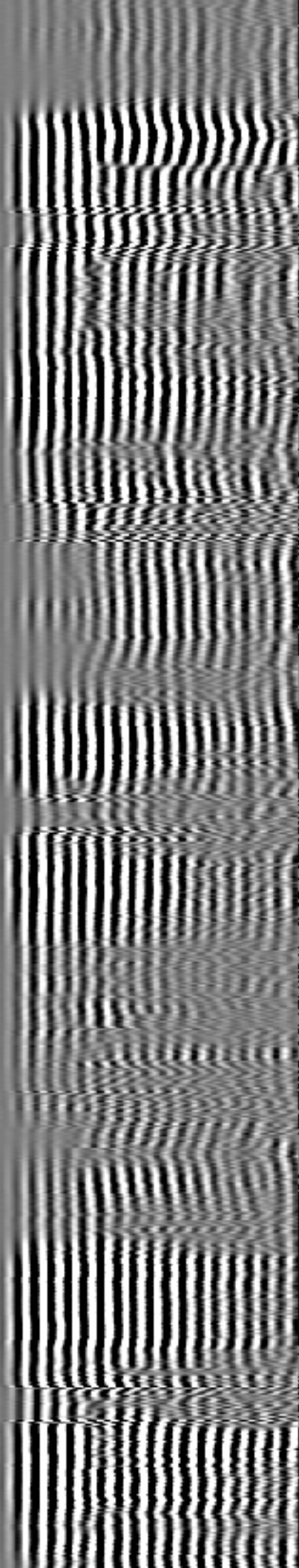
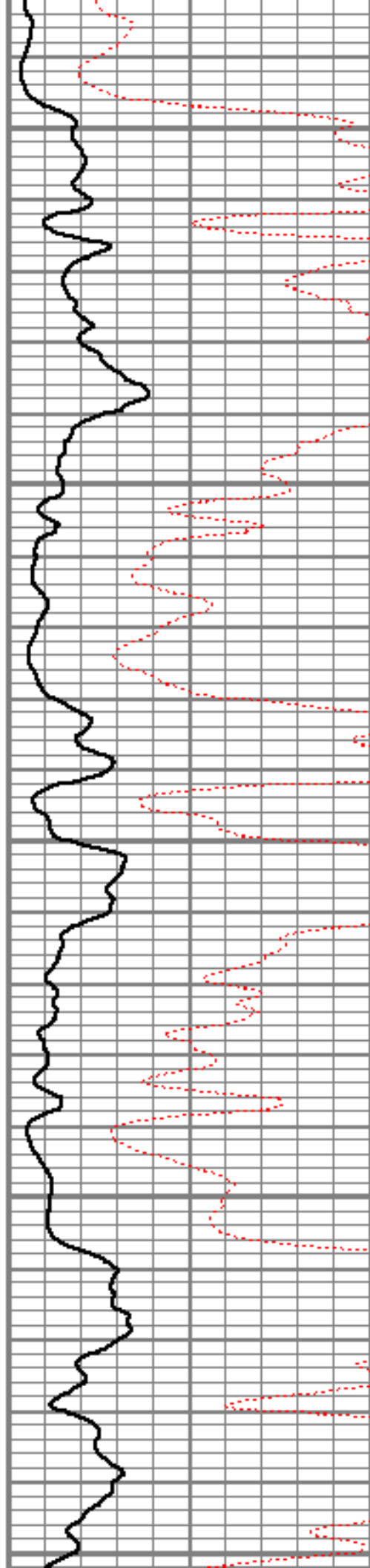
4800

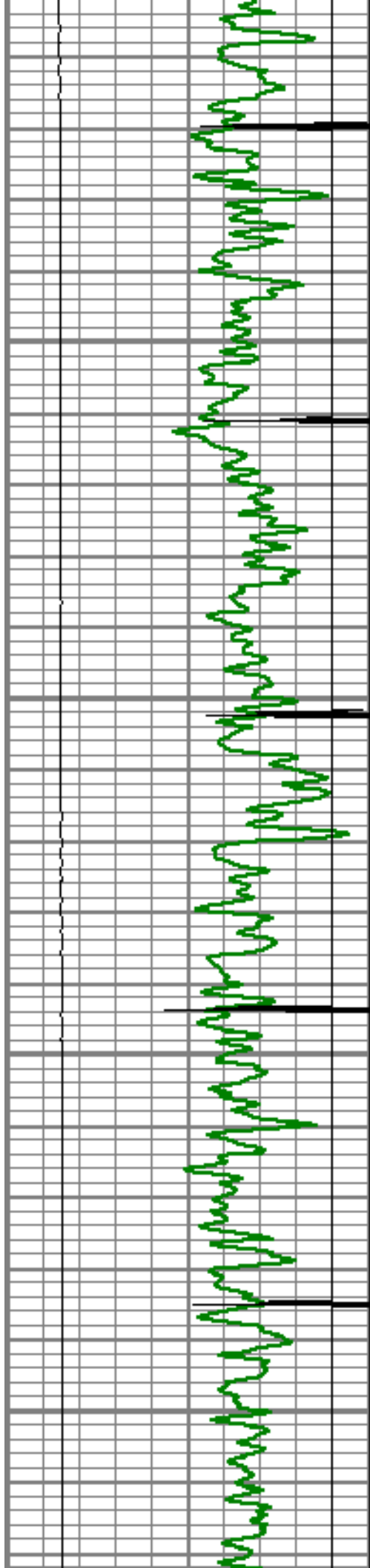
4850

4900

4950

5000



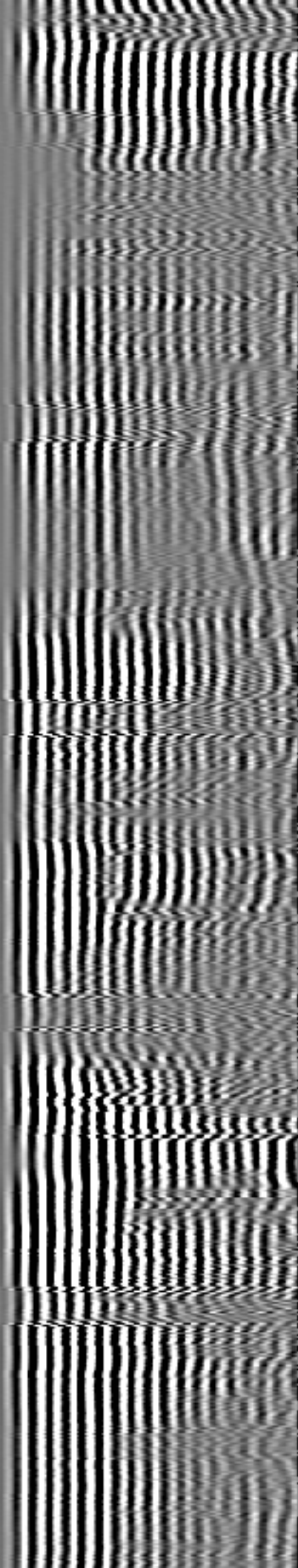
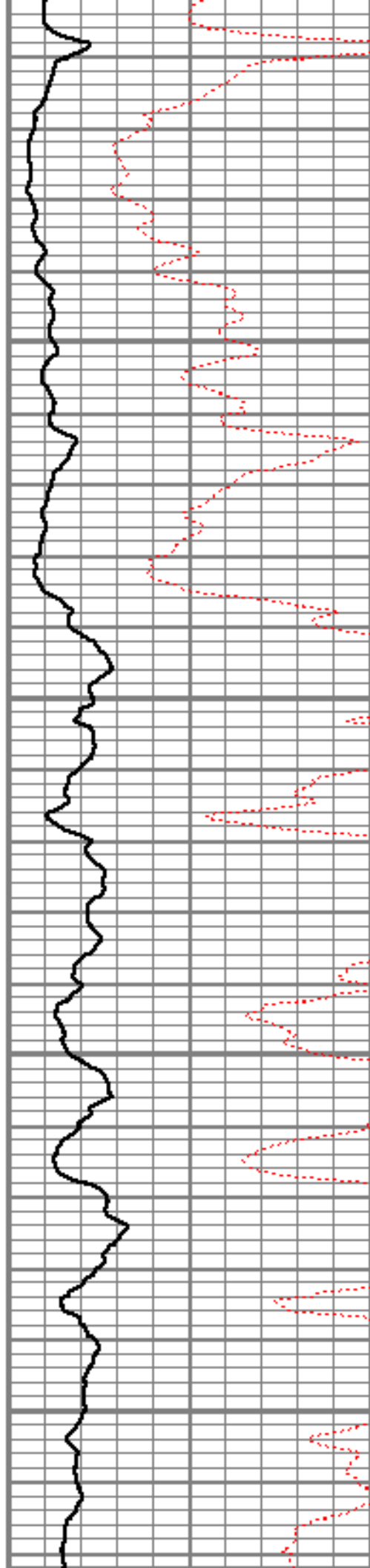


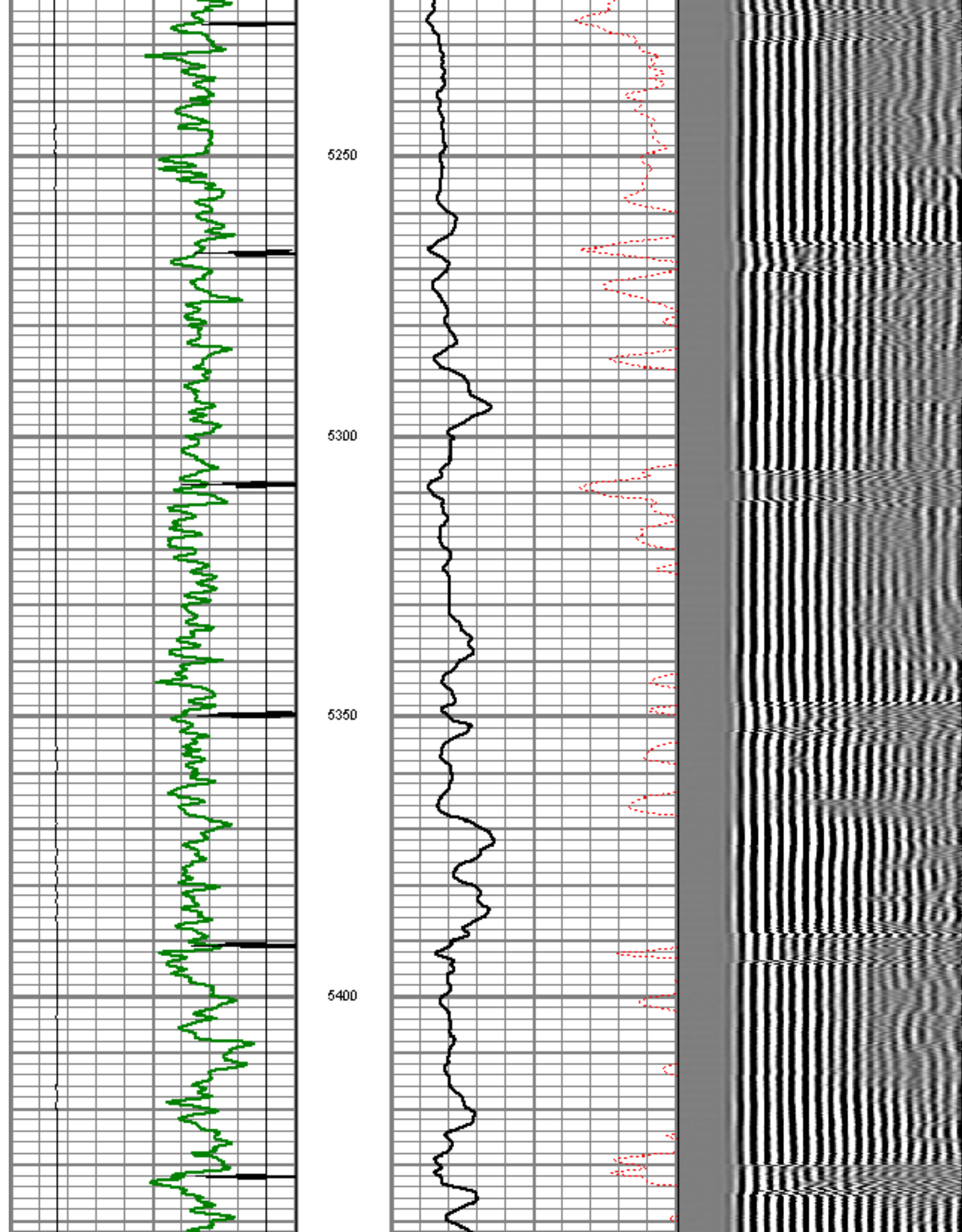
5050

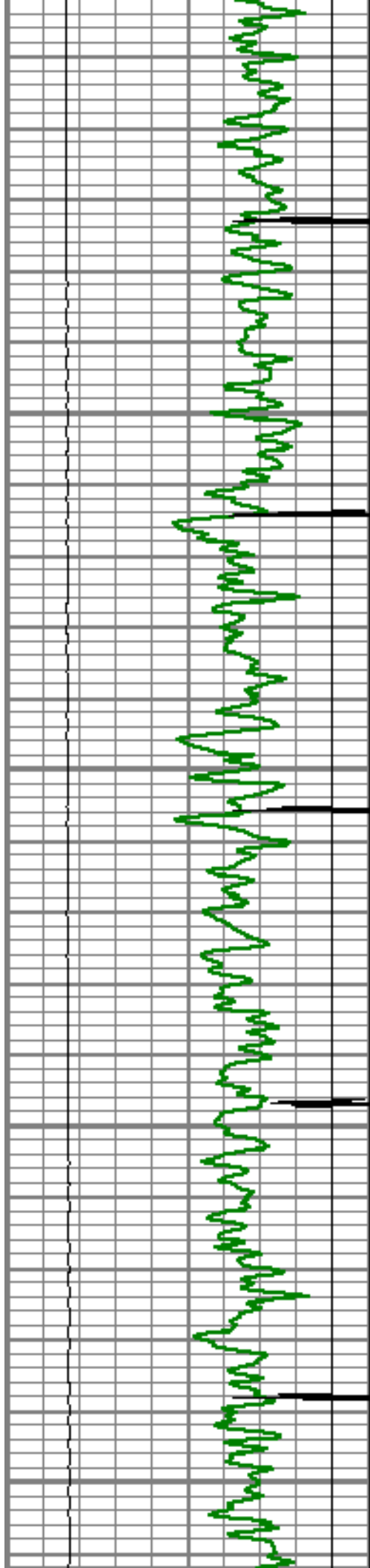
5100

5150

5200







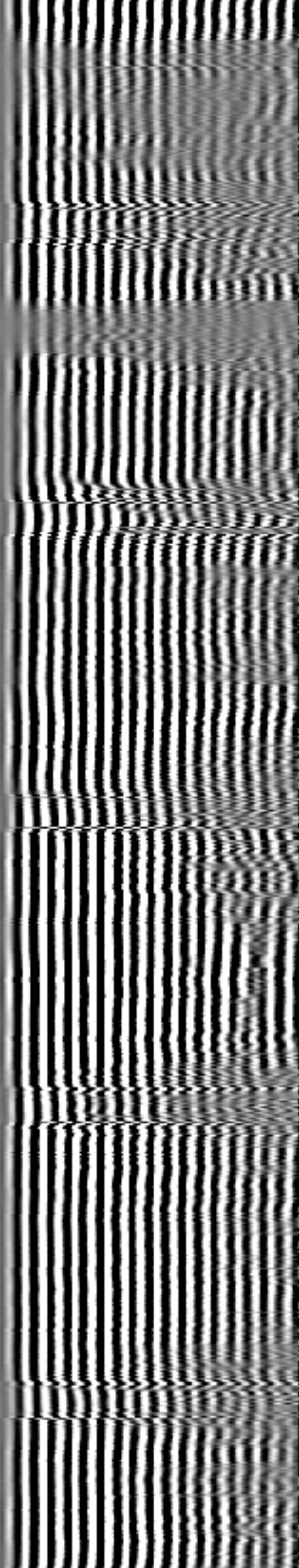
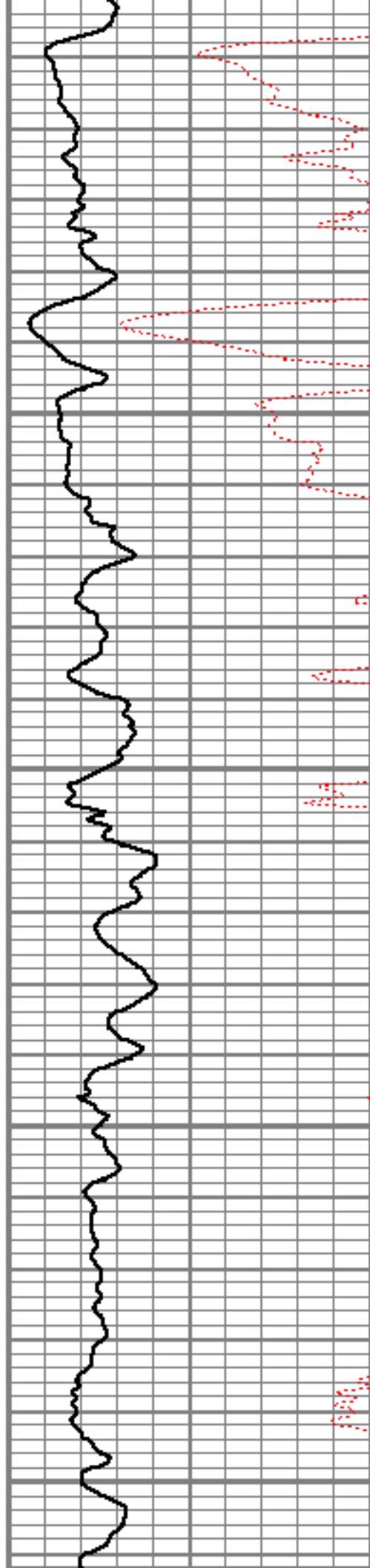
5450

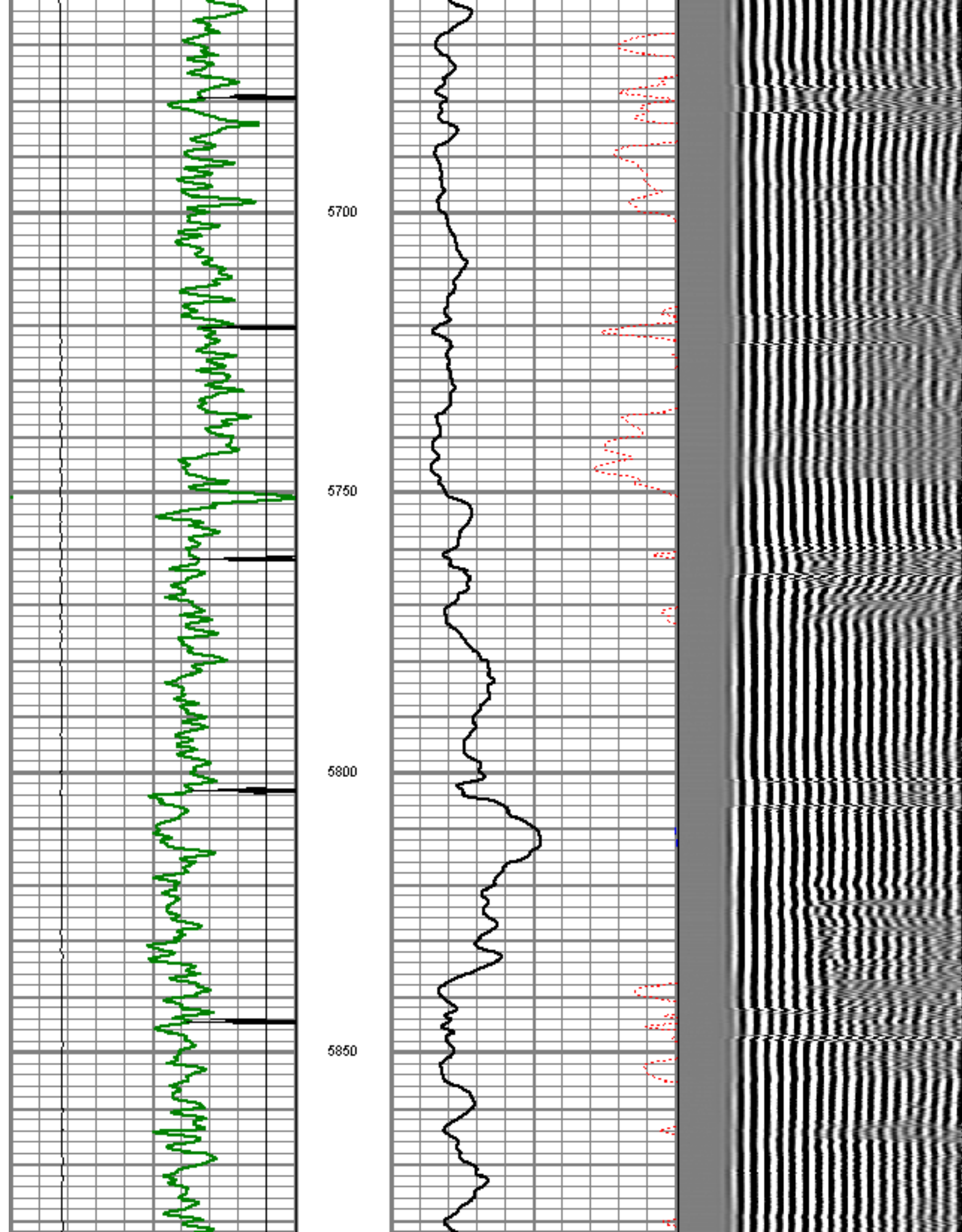
5500

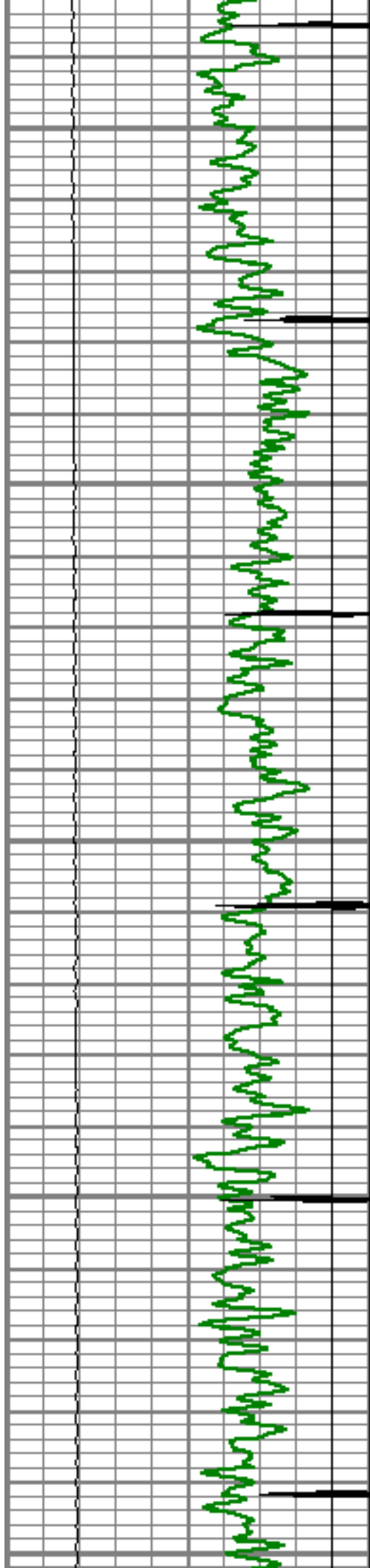
5550

5600

5650







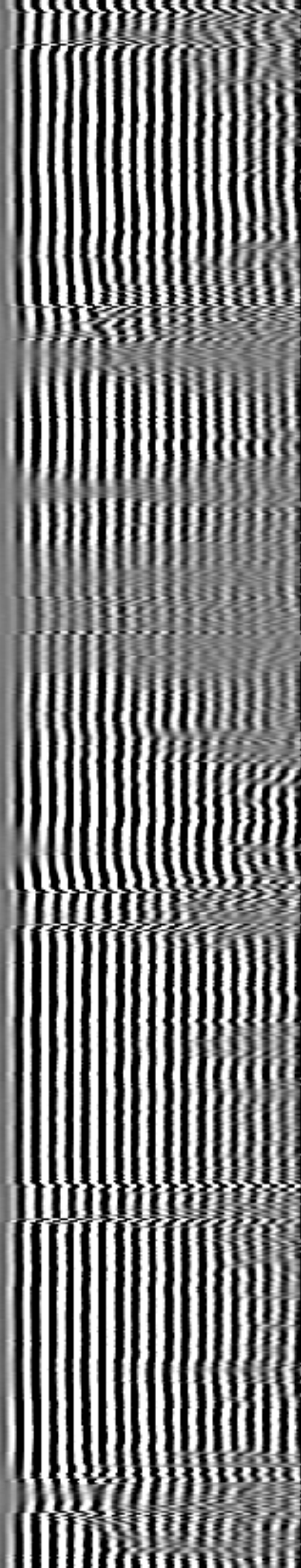
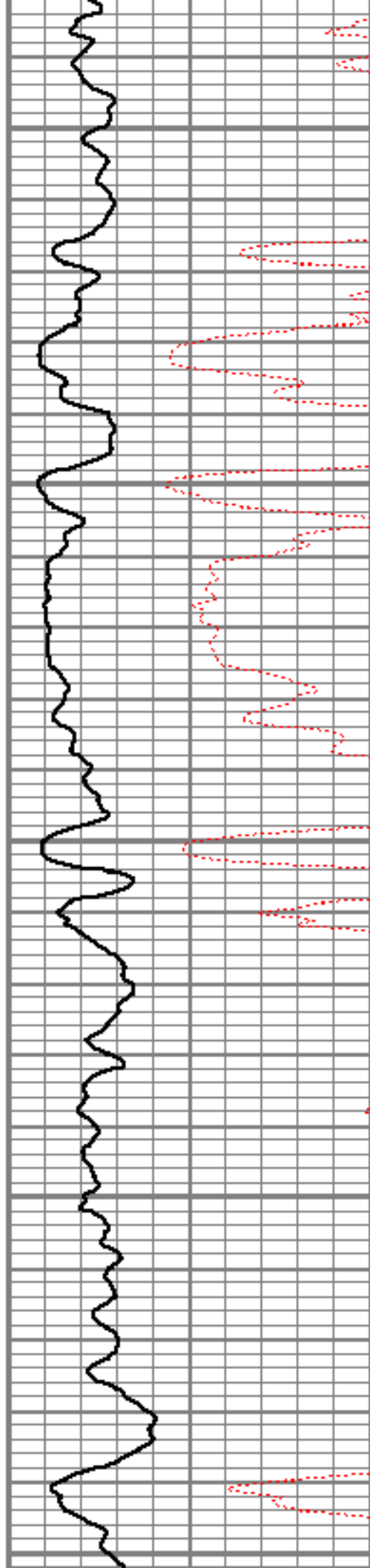
5900

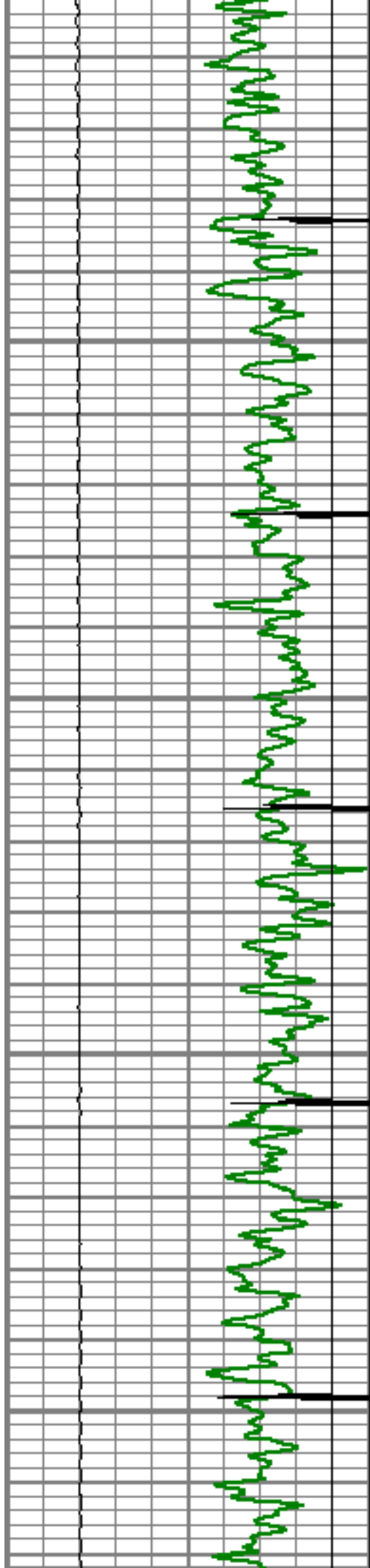
5950

6000

6050

6100



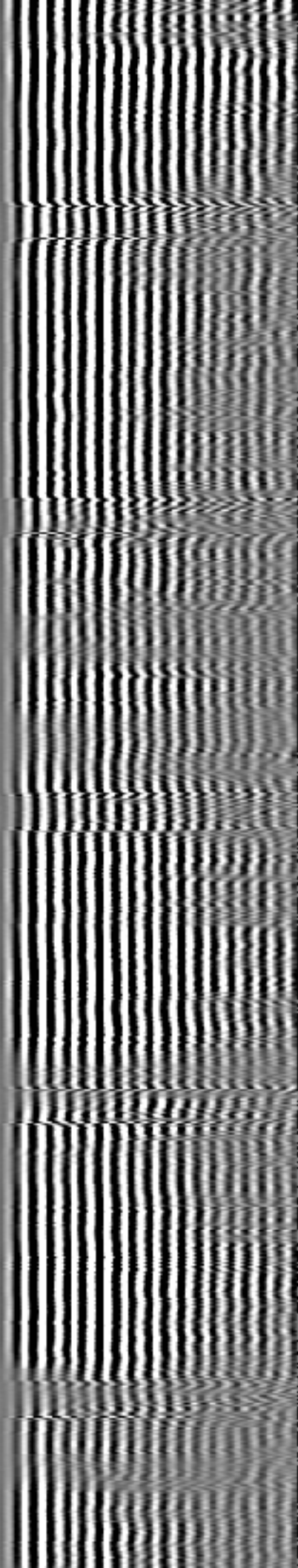
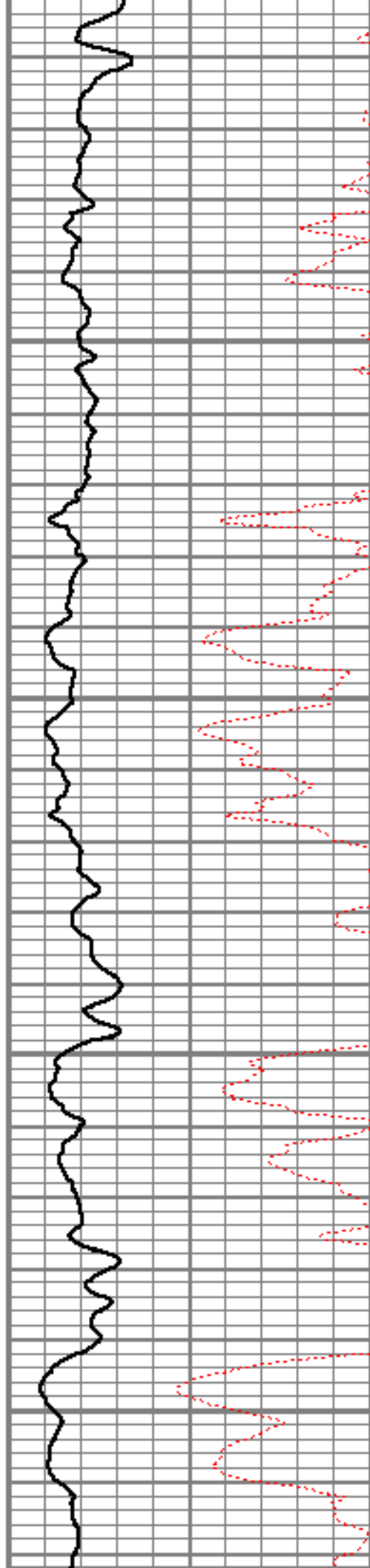


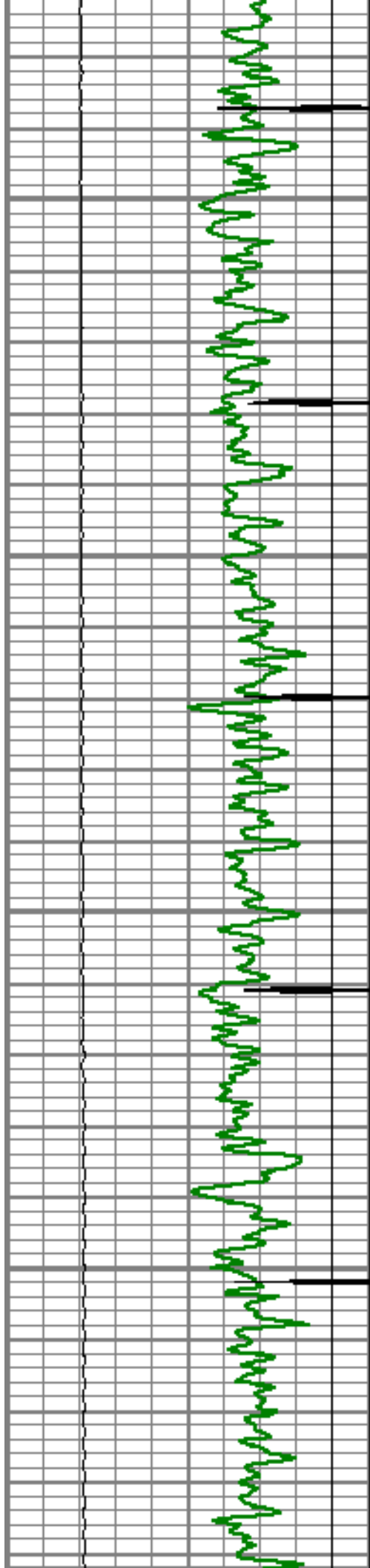
6150

6200

6250

6300



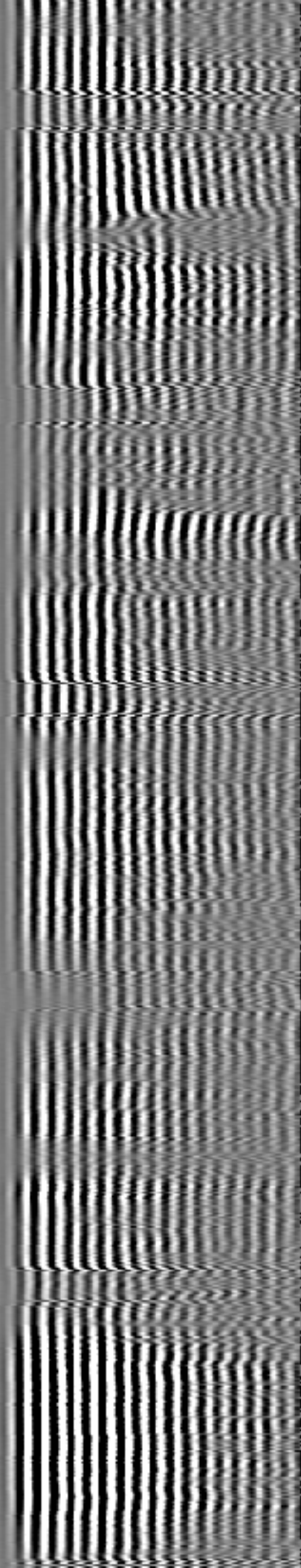
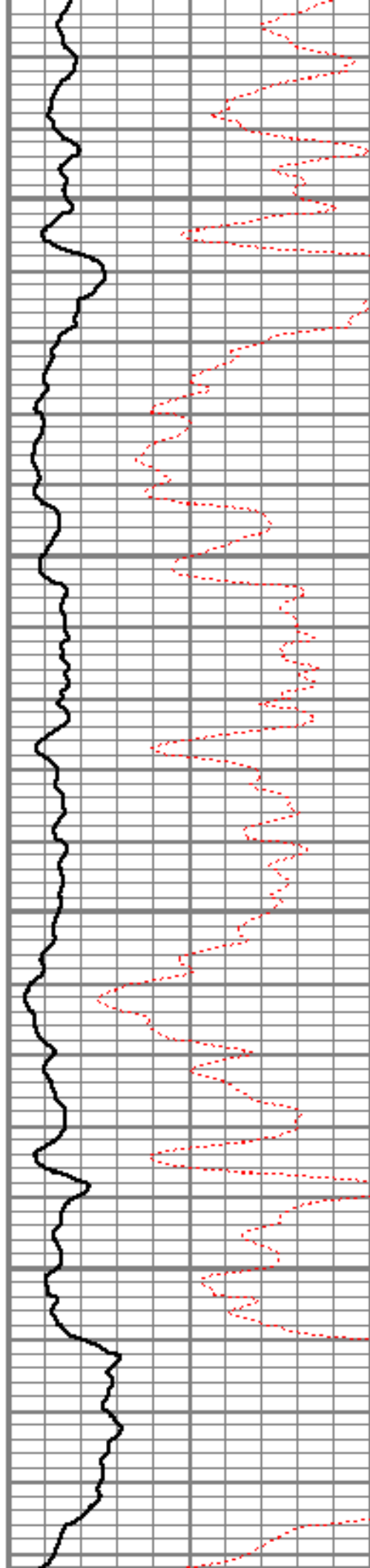


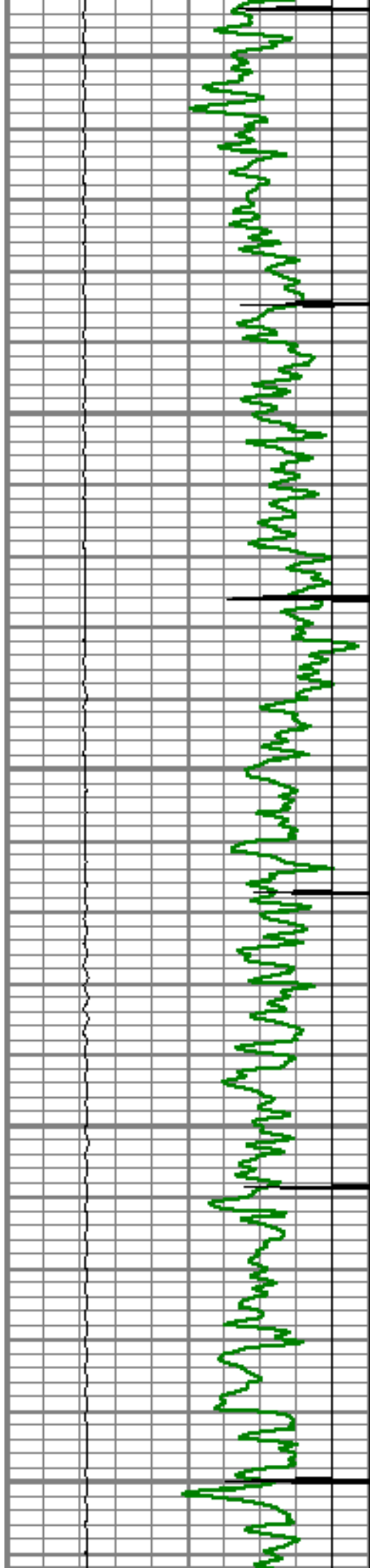
6350

6400

6450

6500





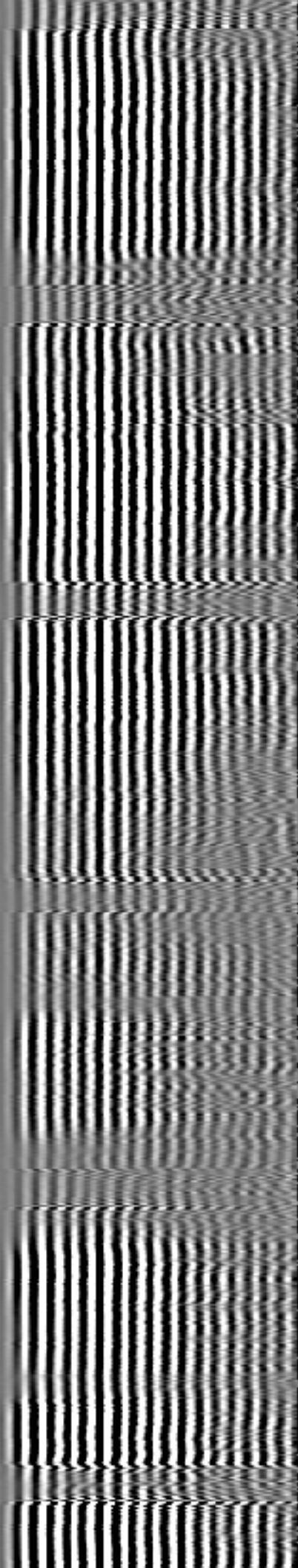
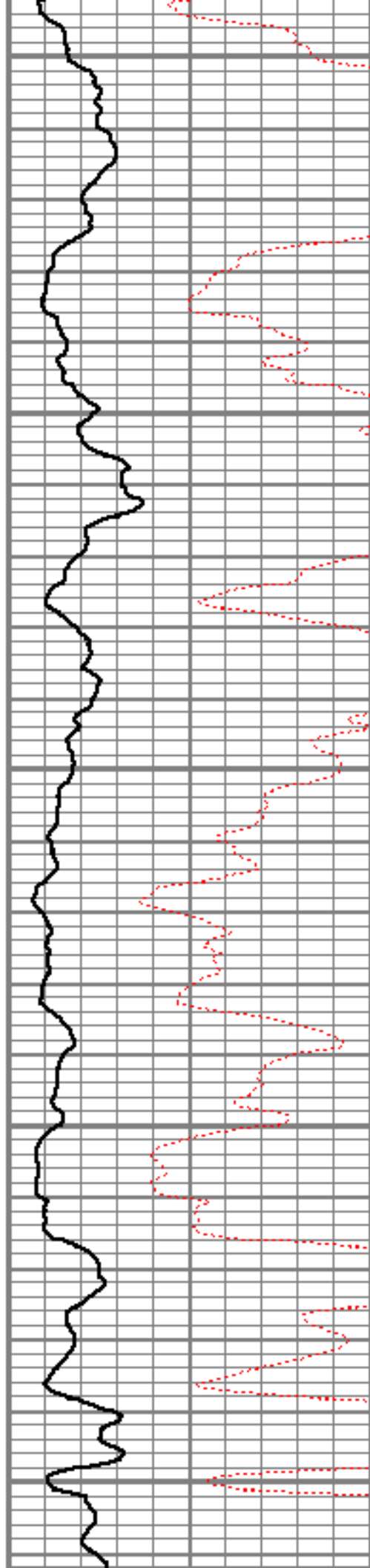
6550

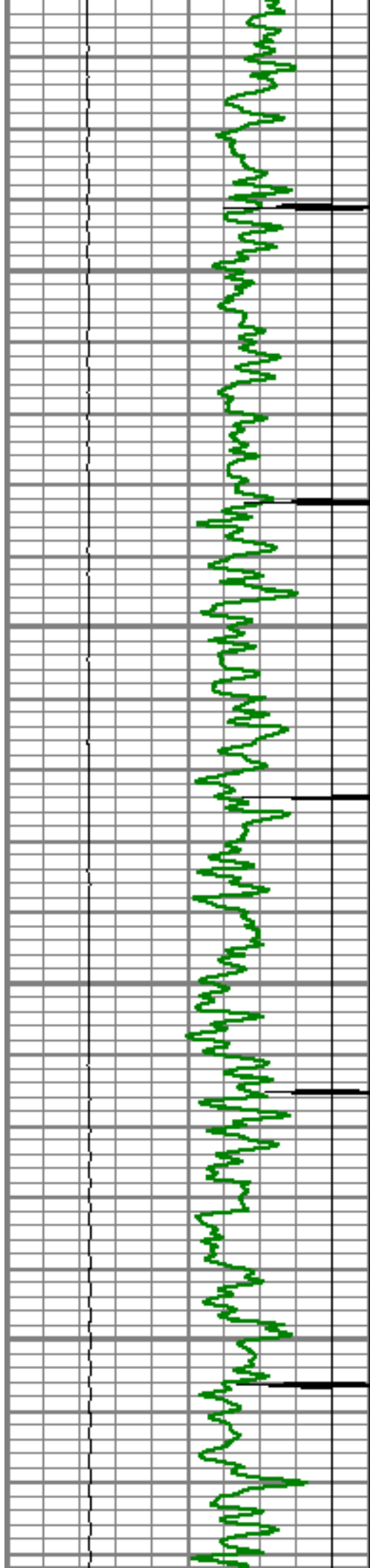
6600

6650

6700

6750



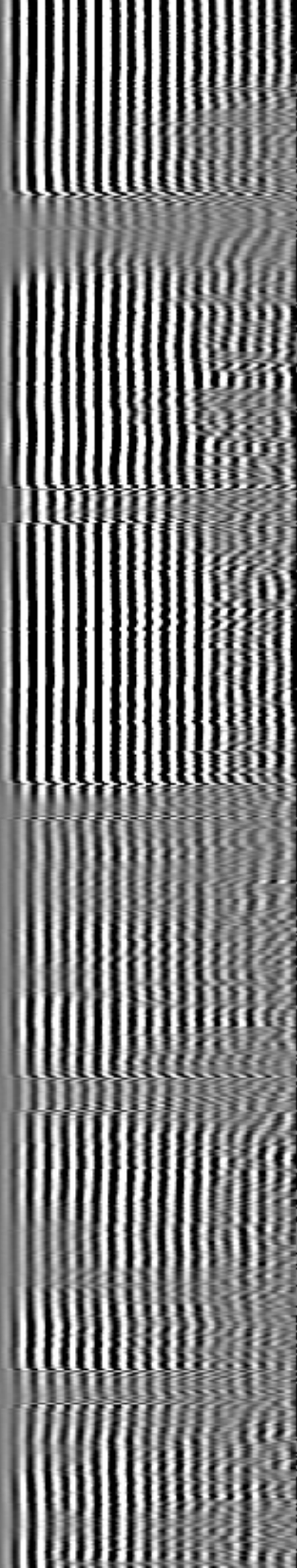
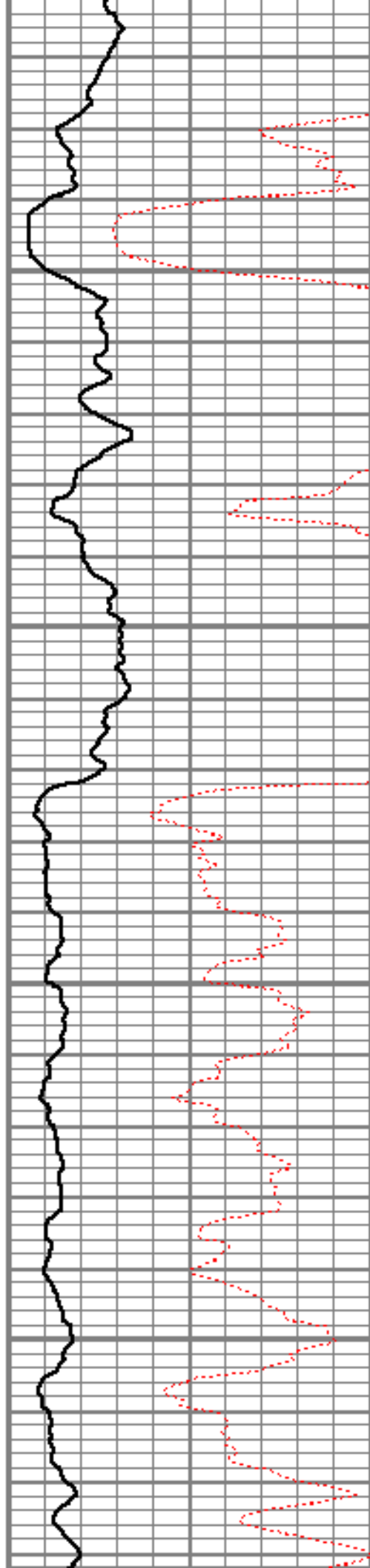


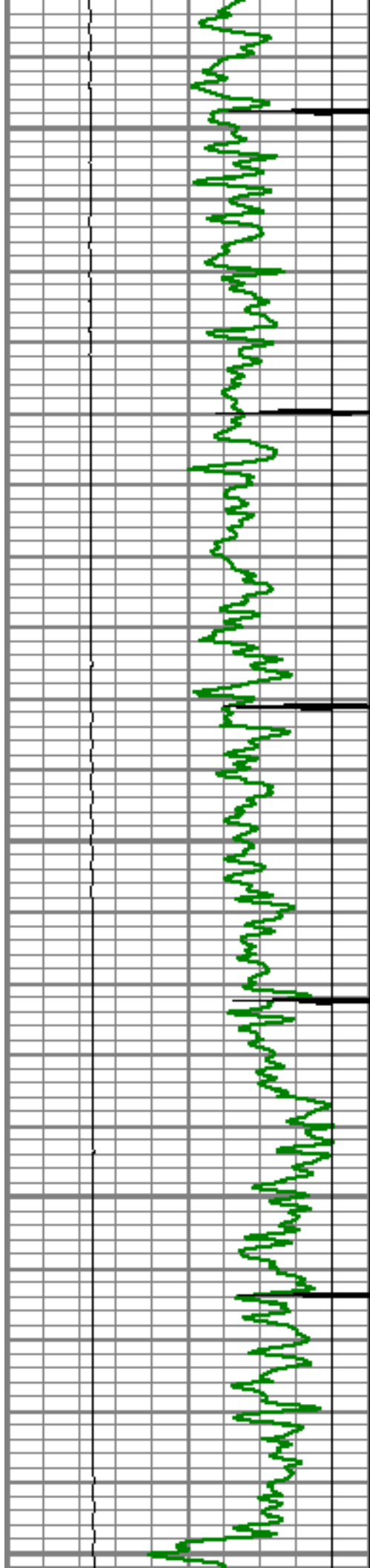
6800

6850

6900

6950





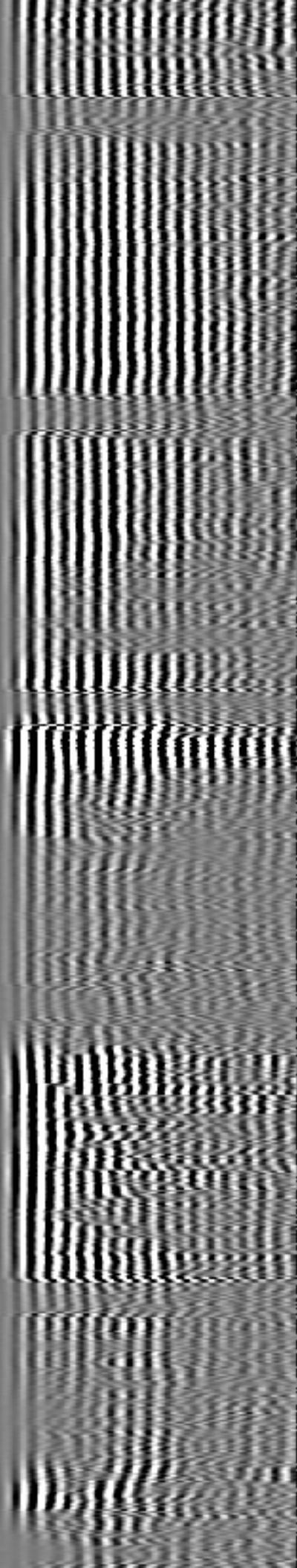
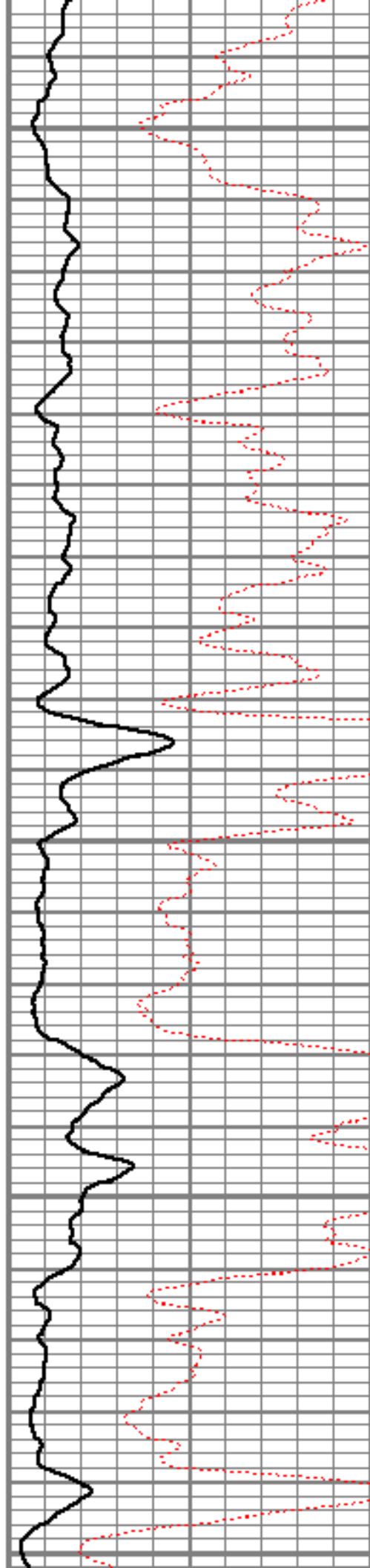
7000

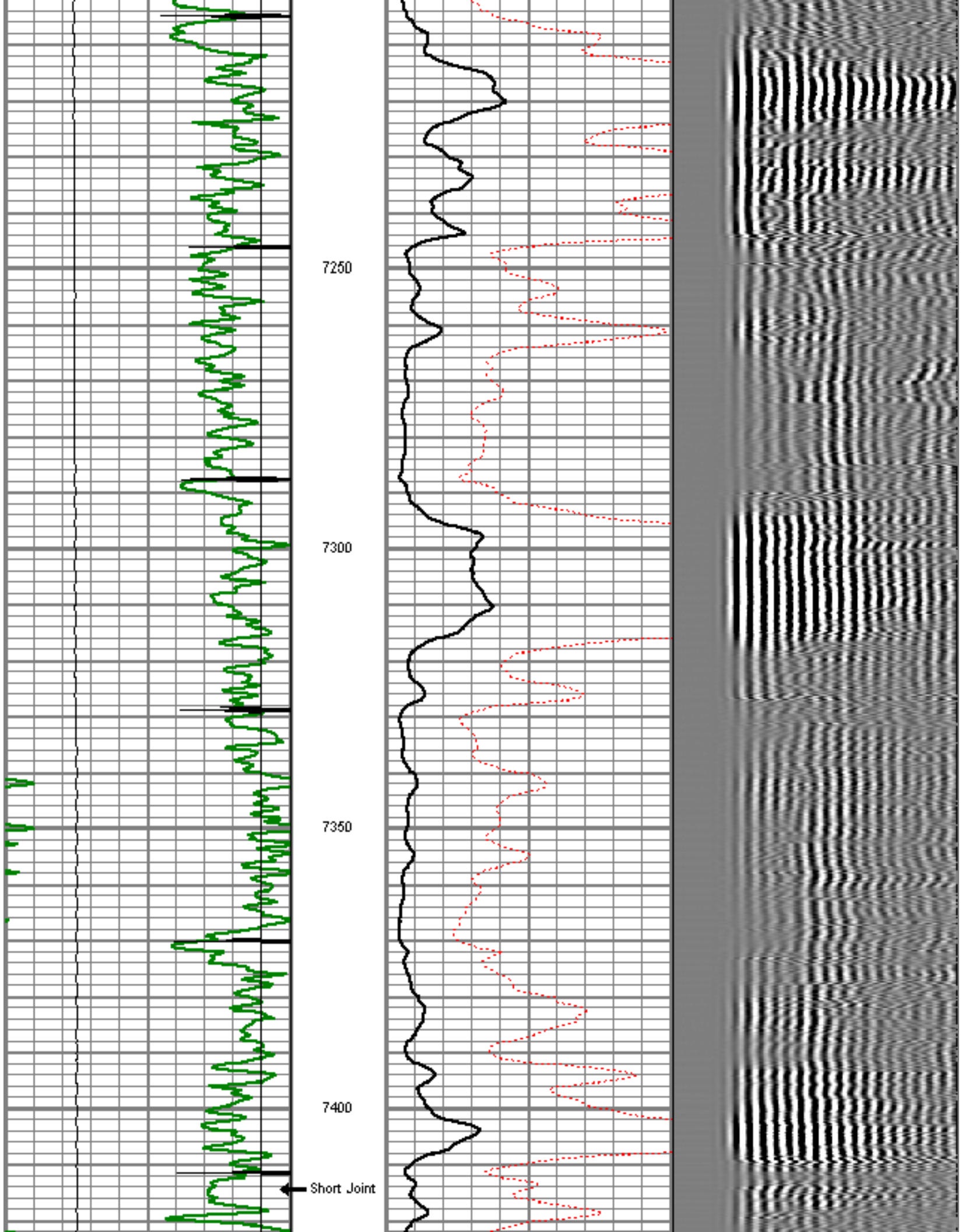
7050

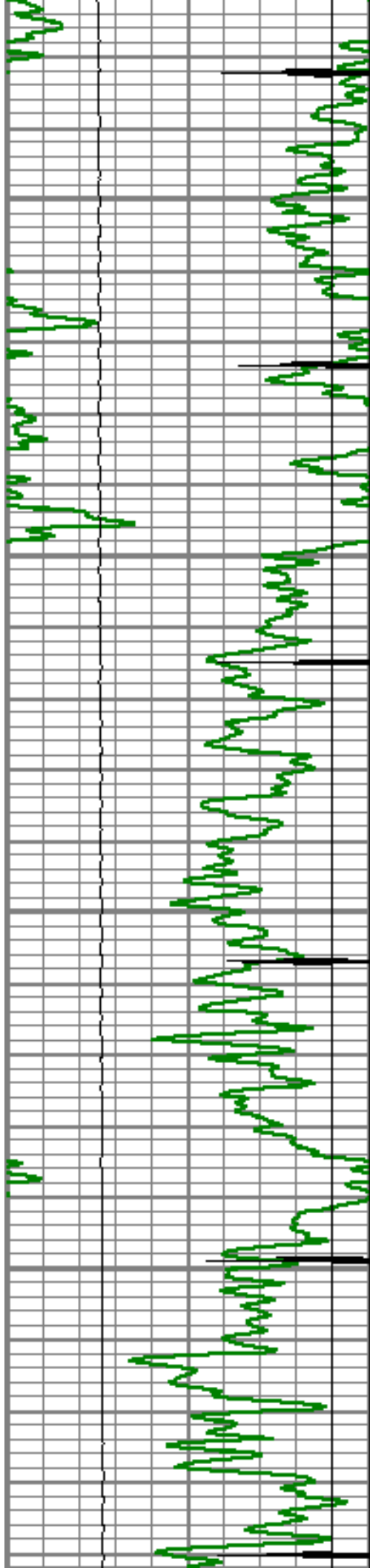
7100

7150

7200





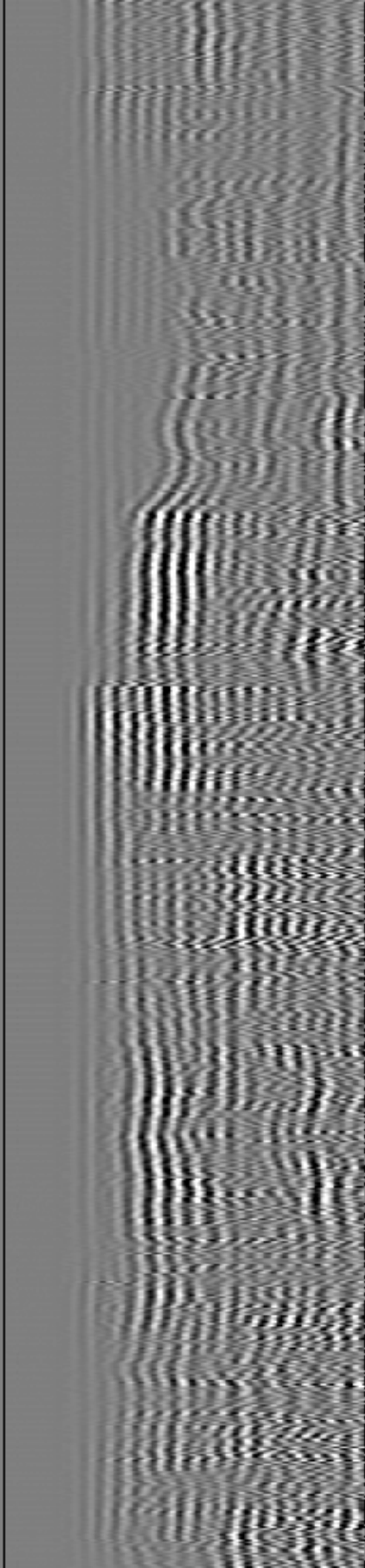
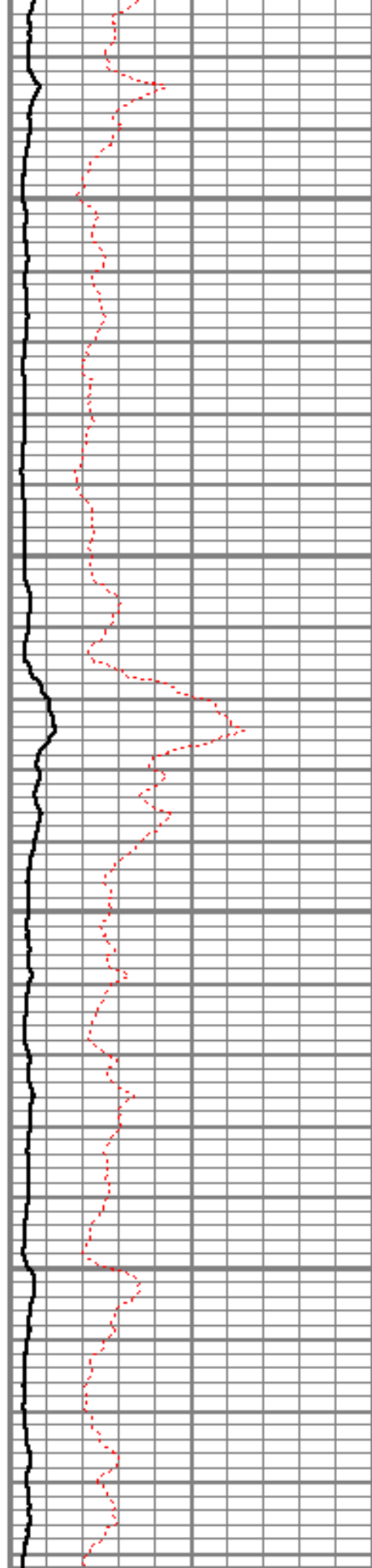


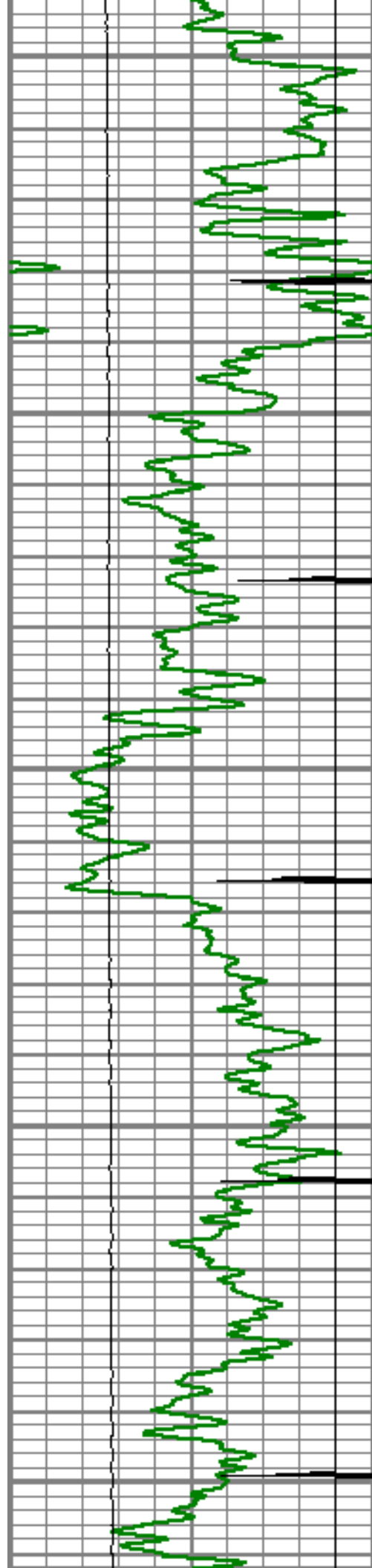
7450

7500

7550

7600





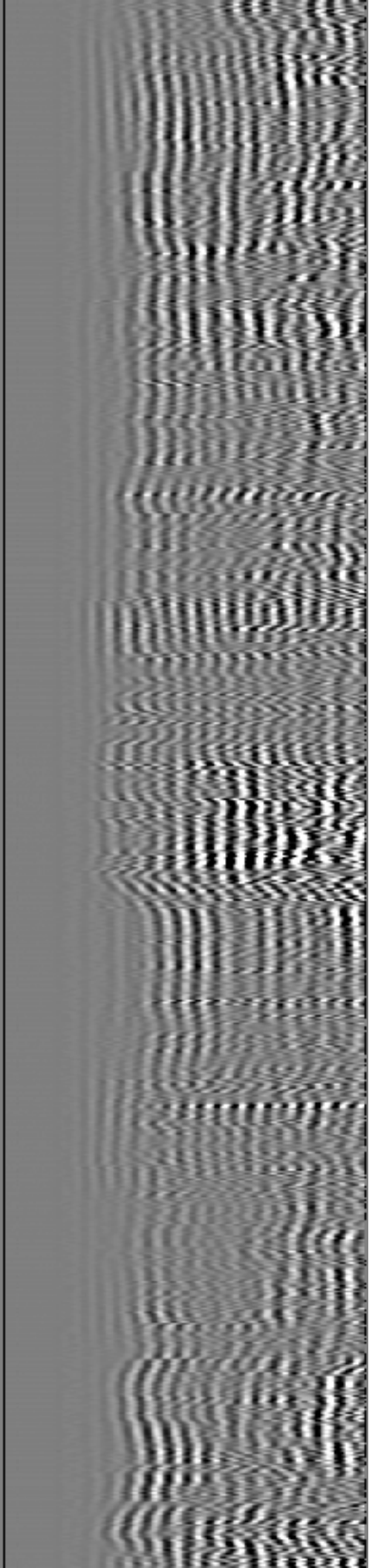
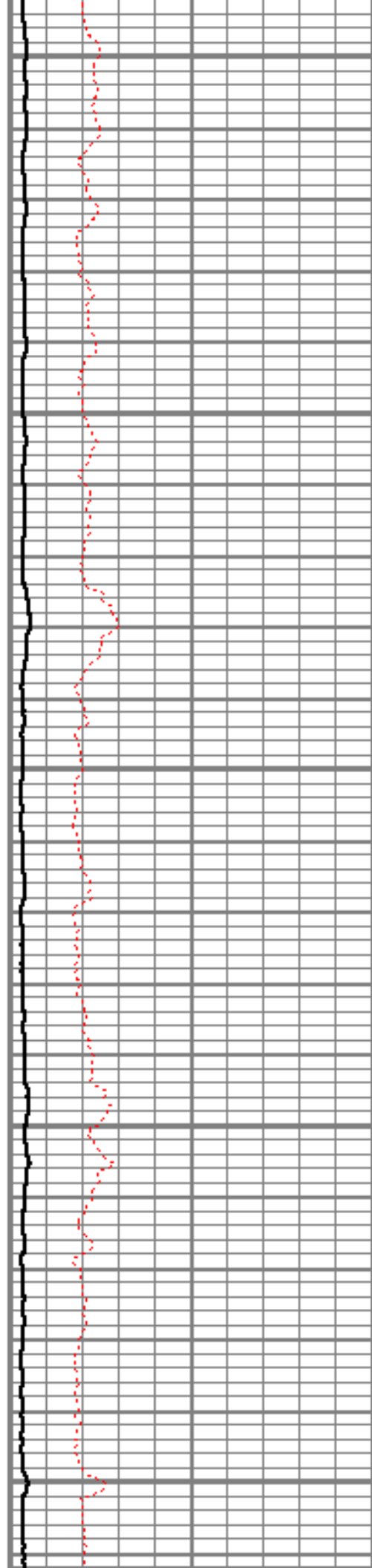
7650

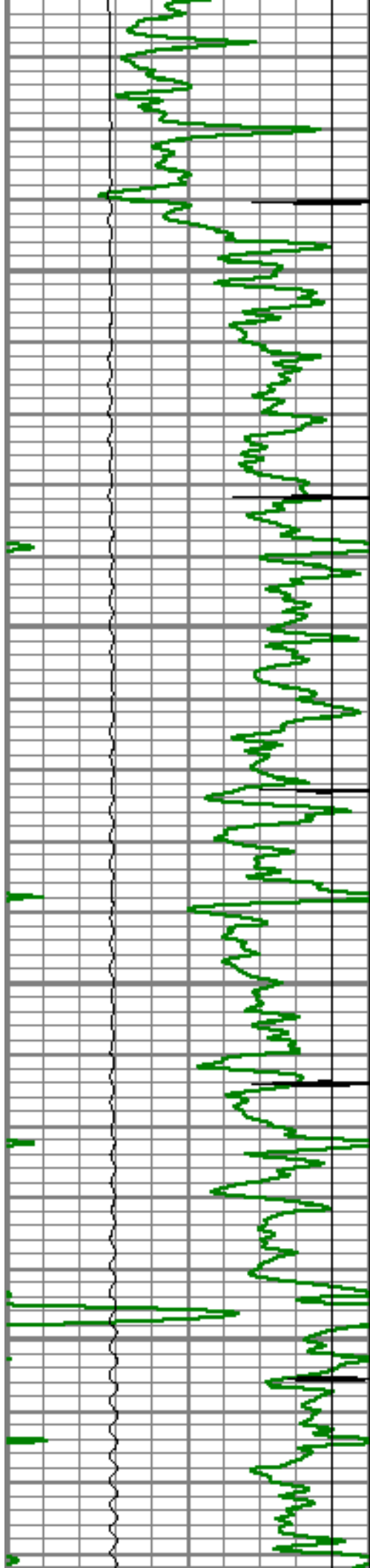
7700

7750

7800

7850



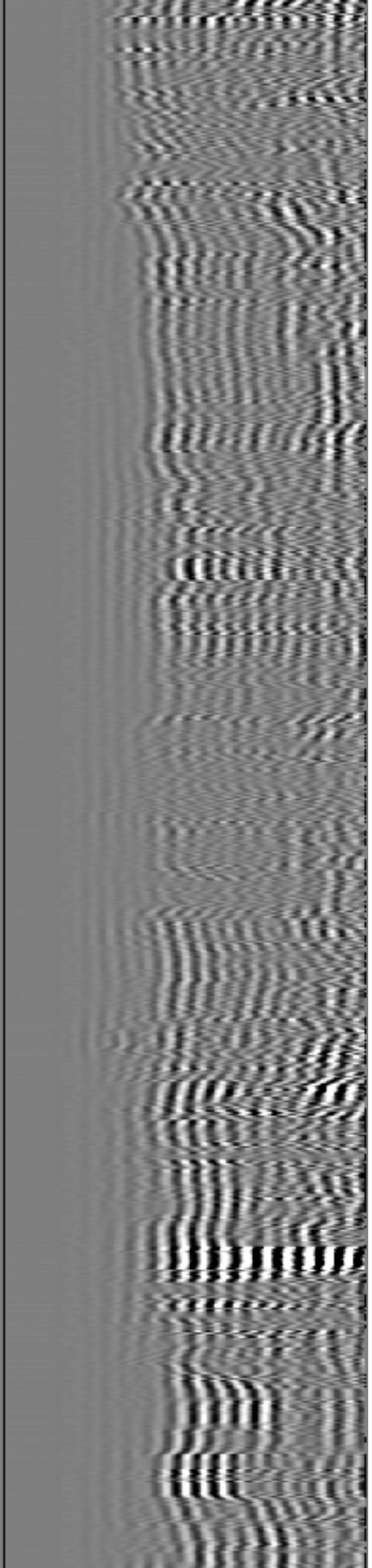
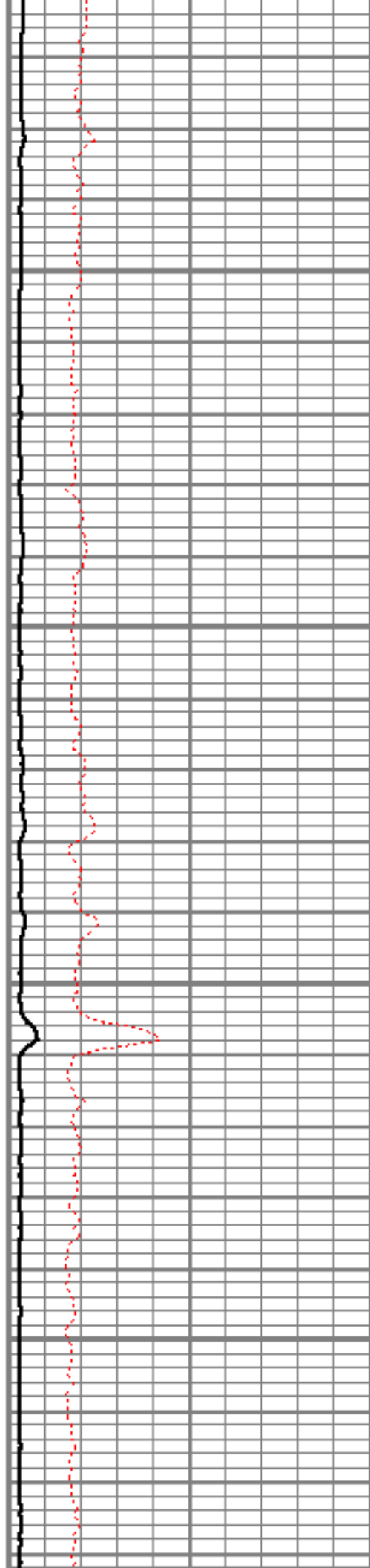


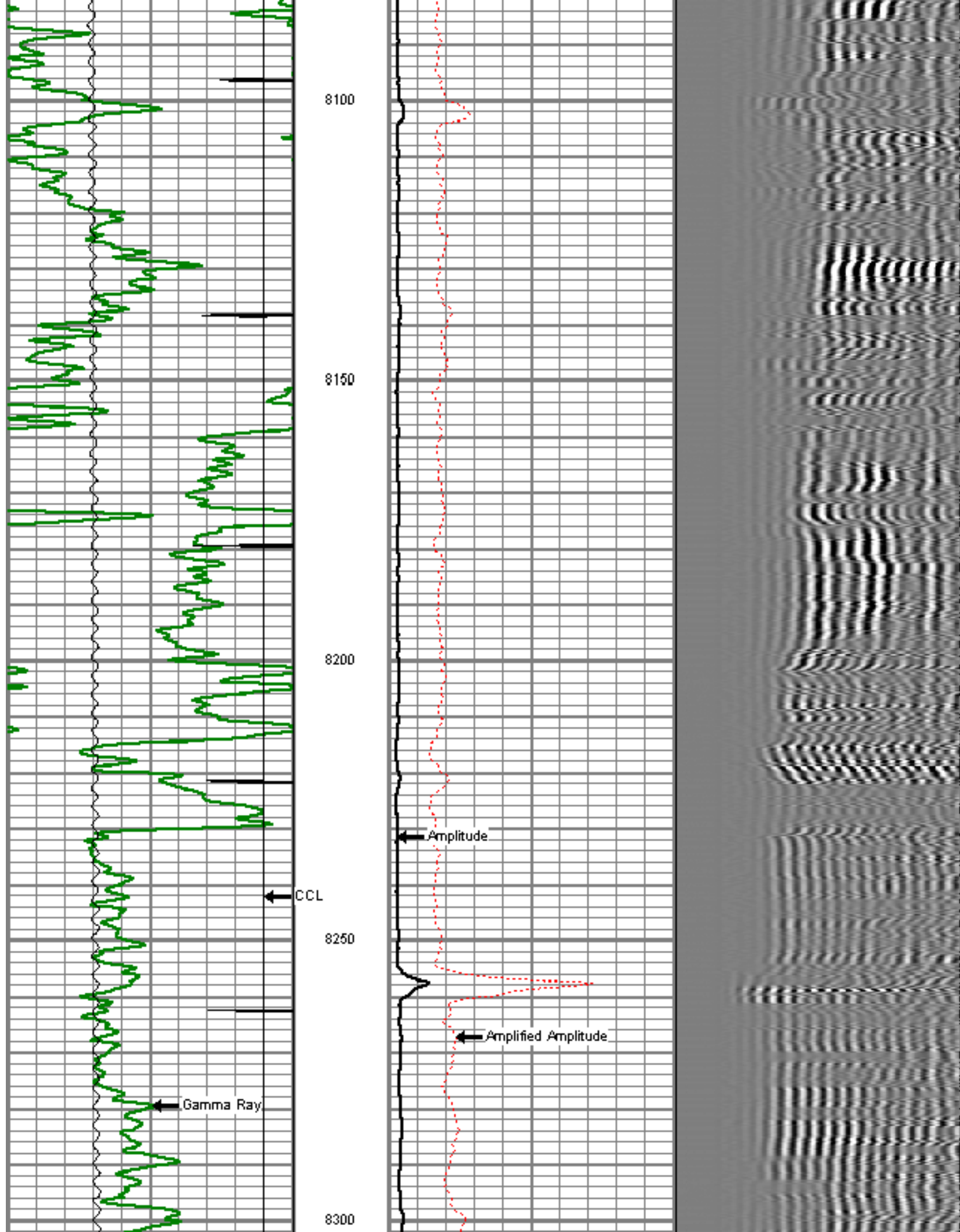
7900

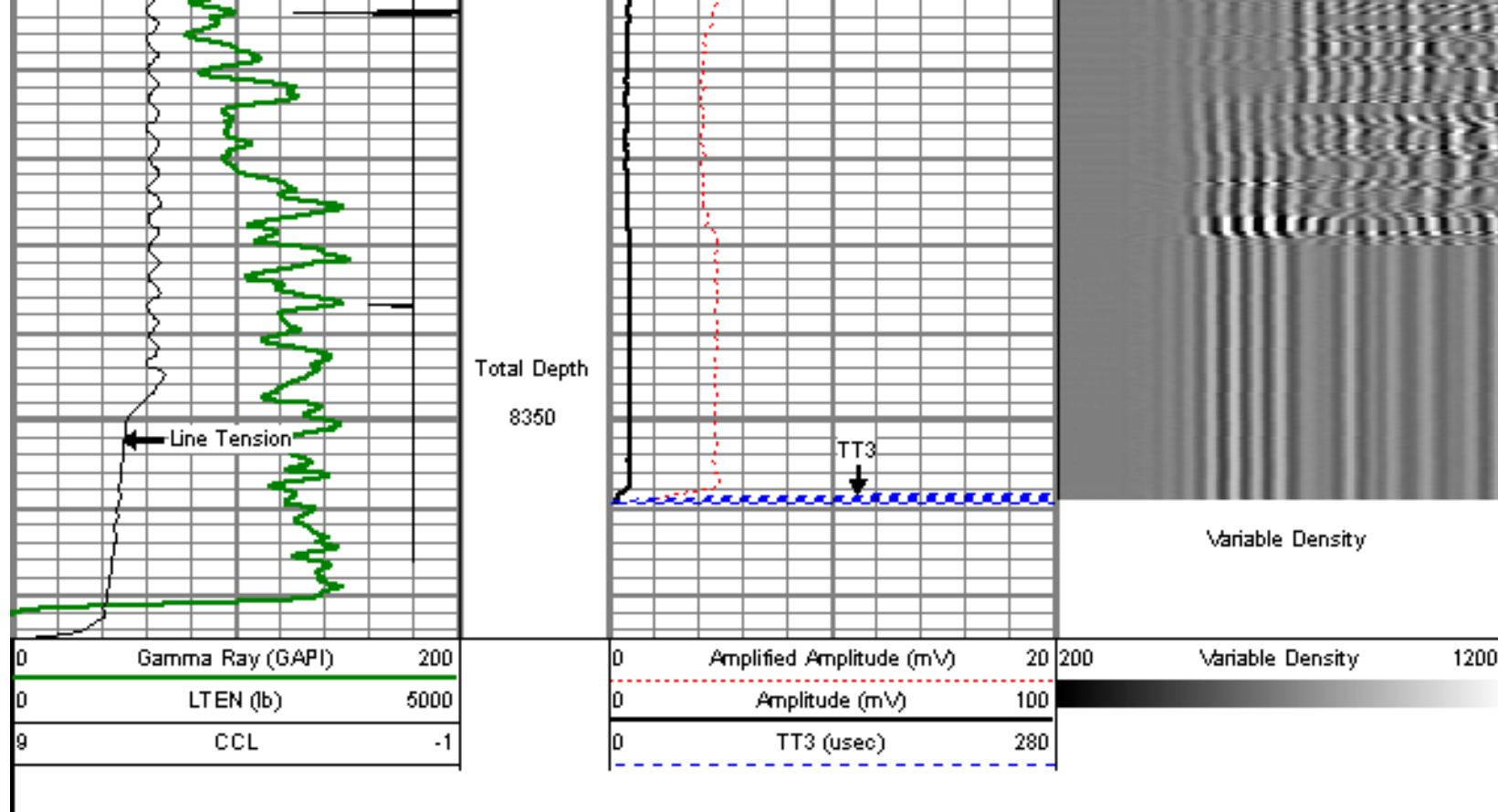
7950

8000

8050







	Company	ENCANA OIL & GAS (USA) INC.
	Well	IONE 4-8-2
	Field	WATTENBERG
	County	WELD
	State	COLORADO

Sensor	Offset (ft)	Schematic	Description	Len (ft)	OD (in)	Wt (lb)
			titan Titan Cable HeadGo Pli.	1.02	1.44	1.50
			Centralizer-Probe (CENT-PROBE-1) Probe Bowspring Centralizer	2.88	2.75	10.00
WVF3	16.56		CBL-PRB_CBL_DIGITAL (PRB_CBL_DIG_28.77'1) Probe 2.75" Dual Receiver Board		2.75	60.00
WVF5	15.56					

Tool Type	Length (ft)	Weight (lb)	OD (in)	Tool Description	Length (ft)	Weight (lb)	OD (in)
CCL	8.21			Centralizer-Probe (CENT-PROBE-2) Probe Bowspring Centralizer	2.88	2.75	10.00
				CCL-PRB_CCL_2MAG (PRB_CCL_2MAG_02.02) Probe 2 MagnetCCL		2.75	
GR	3.63			GR-PROBE_GR (PRB_GR_275_01) Probe stand alone Gamma Ray Tool	4.54	2.75	30.00
TEMP	0.17			TEMP-Comprobe (TEMP_CMPRB_1375_01) Probe pulse Temp tool	12.88	1.38	15.00
Dataset: ione 4-8-2.db: field/well/run1/pass16 Total Length: 24.98 ft Total Weight: 126.50 lb O.D.: 2.75 in							