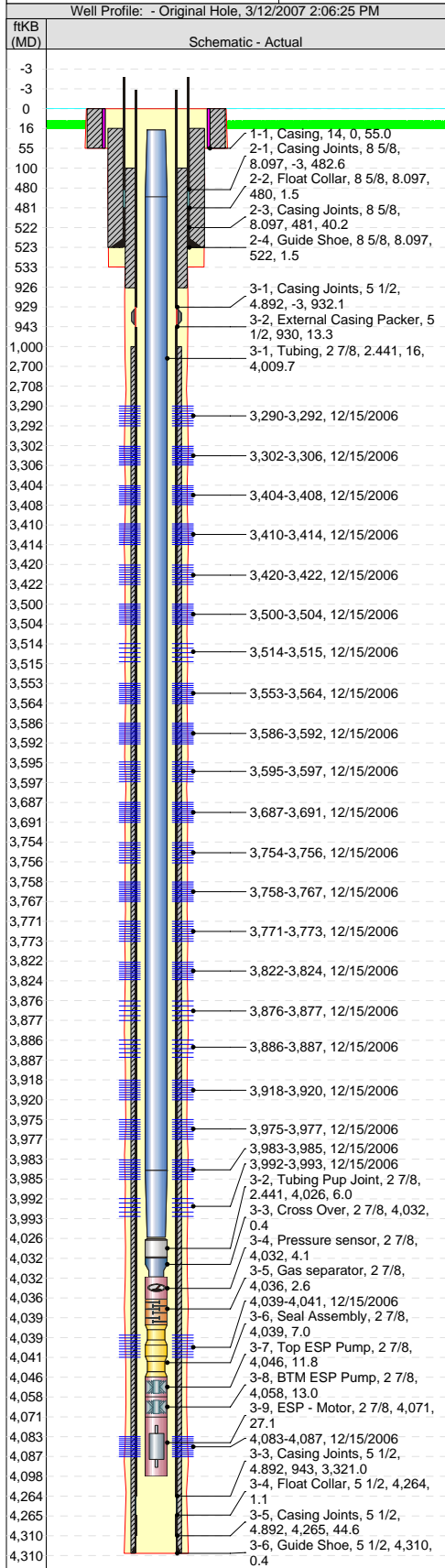




# Perforations

Well Name: Trenton Federal 44-2

API/UWI 05-081-07351-0000	Surface Legal Location	Lease Number COC 63308	Field Name LAY CREEK	State COLORADO
Well Profile	Original KB Elevation (ft) 6,787.00	KB-Ground Distance (ft) 16.00	KB-Casing Flange Distance (ft) 15.50	KB-Tubing Head Distance (ft)



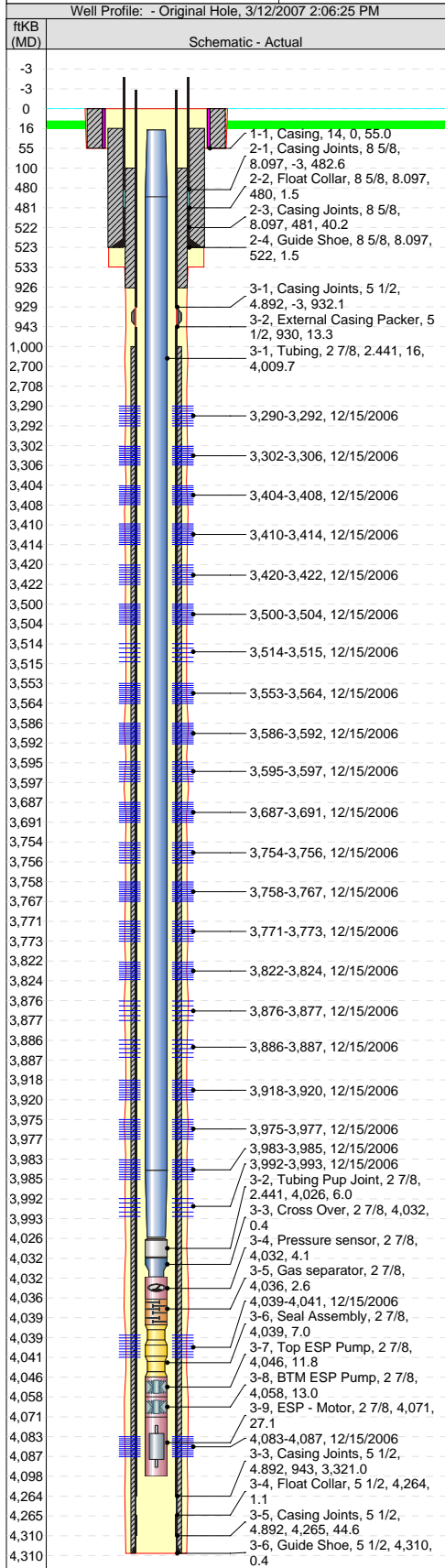
3,290.0-3,292.0ftKB on 12/15/2006 08:00							
Date	12/15/2006	Zone	<Zone?>, Original Hole	Top (ftKB)	3,290.0	Bottom (ftKB)	3,292.0
Perforation Company	Owen Oil Tools, Inc.	Conveyance Method	Wireline	Gun Size (in)	3 1/8	Carrier Make	Owen Oil Tool Inc.
Shot Density (shots/ft)	6.0	Charge Type	Shaped	Phasing (°)	60		
Orientation	Orientation Method						
Over/Under Balanced	Over/Under Pres (psi)	FL MD Before (ftKB)	FL MD After (ftKB)	P (init surf) (psi)	P (final surf) (psi)		
Balanced							
Perforation Statuses							
Date	Status	Comment					
3,302.0-3,306.0ftKB on 12/15/2006 08:00							
Date	12/15/2006	Zone	<Zone?>, Original Hole	Top (ftKB)	3,302.0	Bottom (ftKB)	3,306.0
Perforation Company	Owen Oil Tools, Inc.	Conveyance Method	Wireline	Gun Size (in)	3 1/8	Carrier Make	Owen Oil Tool Inc.
Shot Density (shots/ft)	6.0	Charge Type	Shaped	Phasing (°)	60		
Orientation	Orientation Method						
Over/Under Balanced	Over/Under Pres (psi)	FL MD Before (ftKB)	FL MD After (ftKB)	P (init surf) (psi)	P (final surf) (psi)		
Balanced							
Perforation Statuses							
Date	Status	Comment					
3,404.0-3,408.0ftKB on 12/15/2006 08:00							
Date	12/15/2006	Zone	<Zone?>, Original Hole	Top (ftKB)	3,404.0	Bottom (ftKB)	3,408.0
Perforation Company	Owen Oil Tools, Inc.	Conveyance Method	Wireline	Gun Size (in)	3 1/8	Carrier Make	Owen Oil Tool Inc.
Shot Density (shots/ft)	6.0	Charge Type	Shaped	Phasing (°)	60		
Orientation	Orientation Method						
Over/Under Balanced	Over/Under Pres (psi)	FL MD Before (ftKB)	FL MD After (ftKB)	P (init surf) (psi)	P (final surf) (psi)		
Balanced							
Perforation Statuses							
Date	Status	Comment					
3,410.0-3,414.0ftKB on 12/15/2006 08:00							
Date	12/15/2006	Zone	<Zone?>, Original Hole	Top (ftKB)	3,410.0	Bottom (ftKB)	3,414.0
Perforation Company	Owen Oil Tools, Inc.	Conveyance Method	Wireline	Gun Size (in)	3 1/8	Carrier Make	Owen Oil Tool Inc.
Shot Density (shots/ft)	6.0	Charge Type	Shaped	Phasing (°)	60		
Orientation	Orientation Method						
Over/Under Balanced	Over/Under Pres (psi)	FL MD Before (ftKB)	FL MD After (ftKB)	P (init surf) (psi)	P (final surf) (psi)		
Balanced							
Perforation Statuses							
Date	Status	Comment					
3,420.0-3,422.0ftKB on 12/15/2006 08:00							
Date	12/15/2006	Zone	<Zone?>, Original Hole	Top (ftKB)	3,420.0	Bottom (ftKB)	3,422.0
Perforation Company	Owen Oil Tools, Inc.	Conveyance Method	Wireline	Gun Size (in)	3 1/8	Carrier Make	Owen Oil Tool Inc.
Shot Density (shots/ft)	6.0	Charge Type	Shaped	Phasing (°)	60		
Orientation	Orientation Method						
Over/Under Balanced	Over/Under Pres (psi)	FL MD Before (ftKB)	FL MD After (ftKB)	P (init surf) (psi)	P (final surf) (psi)		
Balanced							



# Perforations

Well Name: Trenton Federal 44-2

API/UWI 05-081-07351-0000	Surface Legal Location	Lease Number COC 63308	Field Name LAY CREEK	State COLORADO
Well Profile	Original KB Elevation (ft) 6,787.00	KB-Ground Distance (ft) 16.00	KB-Casing Flange Distance (ft) 15.50	KB-Tubing Head Distance (ft)



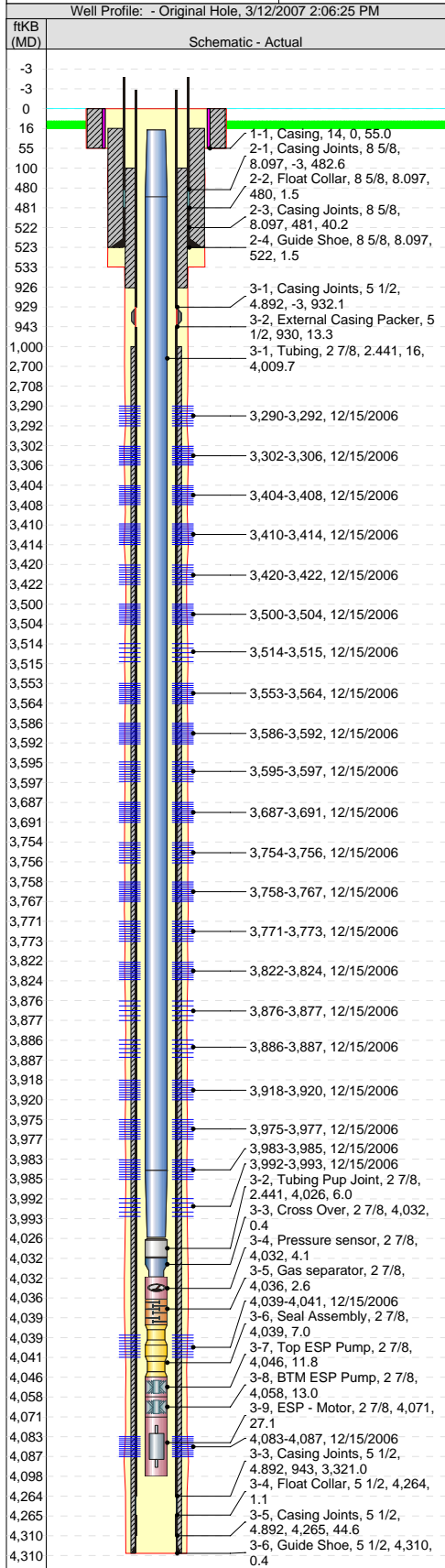
Perforation Statuses						
Date	Status	Comment				
<b>3,500.0-3,504.0ftKB on 12/15/2006 08:00</b>						
Date	Zone	Top (ftKB)	Bottom (ftKB)			
12/15/2006	<Zone?>, Original Hole	3,500.0	3,504.0			
Perforation Company	Conveyance Method	Gun Size (in)	Carrier Make			
Owen Oil Tools, Inc.	Wireline	3 1/8	Owen Oil Tool Inc.			
Shot Density (shots/ft)	Charge Type	Phasing (°)				
6.0	Shaped	60				
Orientation		Orientation Method				
Over/Under Balanced	Over/Under Pres (psi)	FL MD Before (ftKB)	FL MD After (ftKB)	P (init surf) (psi)	P (final surf) (psi)	
Balanced						
<b>Perforation Statuses</b>						
Date	Status	Comment				
<b>3,514.0-3,515.0ftKB on 12/15/2006 08:00</b>						
Date	Zone	Top (ftKB)	Bottom (ftKB)			
12/15/2006	<Zone?>, Original Hole	3,514.0	3,515.0			
Perforation Company	Conveyance Method	Gun Size (in)	Carrier Make			
Owen Oil Tools, Inc.	Wireline	3 1/8	Owen Oil Tool Inc.			
Shot Density (shots/ft)	Charge Type	Phasing (°)				
6.0	Shaped	60				
Orientation		Orientation Method				
Over/Under Balanced	Over/Under Pres (psi)	FL MD Before (ftKB)	FL MD After (ftKB)	P (init surf) (psi)	P (final surf) (psi)	
Balanced						
<b>Perforation Statuses</b>						
Date	Status	Comment				
<b>3,553.0-3,564.0ftKB on 12/15/2006 08:00</b>						
Date	Zone	Top (ftKB)	Bottom (ftKB)			
12/15/2006	<Zone?>, Original Hole	3,553.0	3,564.0			
Perforation Company	Conveyance Method	Gun Size (in)	Carrier Make			
Owen Oil Tools, Inc.	Wireline	3 1/8	Owen Oil Tool Inc.			
Shot Density (shots/ft)	Charge Type	Phasing (°)				
6.0	Shaped	60				
Orientation		Orientation Method				
Over/Under Balanced	Over/Under Pres (psi)	FL MD Before (ftKB)	FL MD After (ftKB)	P (init surf) (psi)	P (final surf) (psi)	
Balanced						
<b>Perforation Statuses</b>						
Date	Status	Comment				
<b>3,586.0-3,592.0ftKB on 12/15/2006 08:00</b>						
Date	Zone	Top (ftKB)	Bottom (ftKB)			
12/15/2006	<Zone?>, Original Hole	3,586.0	3,592.0			
Perforation Company	Conveyance Method	Gun Size (in)	Carrier Make			
Owen Oil Tools, Inc.	Wireline	3 1/8	Owen Oil Tool Inc.			
Shot Density (shots/ft)	Charge Type	Phasing (°)				
6.0	Shaped	60				
Orientation		Orientation Method				
Over/Under Balanced	Over/Under Pres (psi)	FL MD Before (ftKB)	FL MD After (ftKB)	P (init surf) (psi)	P (final surf) (psi)	
Balanced						
<b>Perforation Statuses</b>						
Date	Status	Comment				



# Perforations

Well Name: Trenton Federal 44-2

API/UWI 05-081-07351-0000	Surface Legal Location	Lease Number COC 63308	Field Name LAY CREEK	State COLORADO
Well Profile	Original KB Elevation (ft) 6,787.00	KB-Ground Distance (ft) 16.00	KB-Casing Flange Distance (ft) 15.50	KB-Tubing Head Distance (ft)



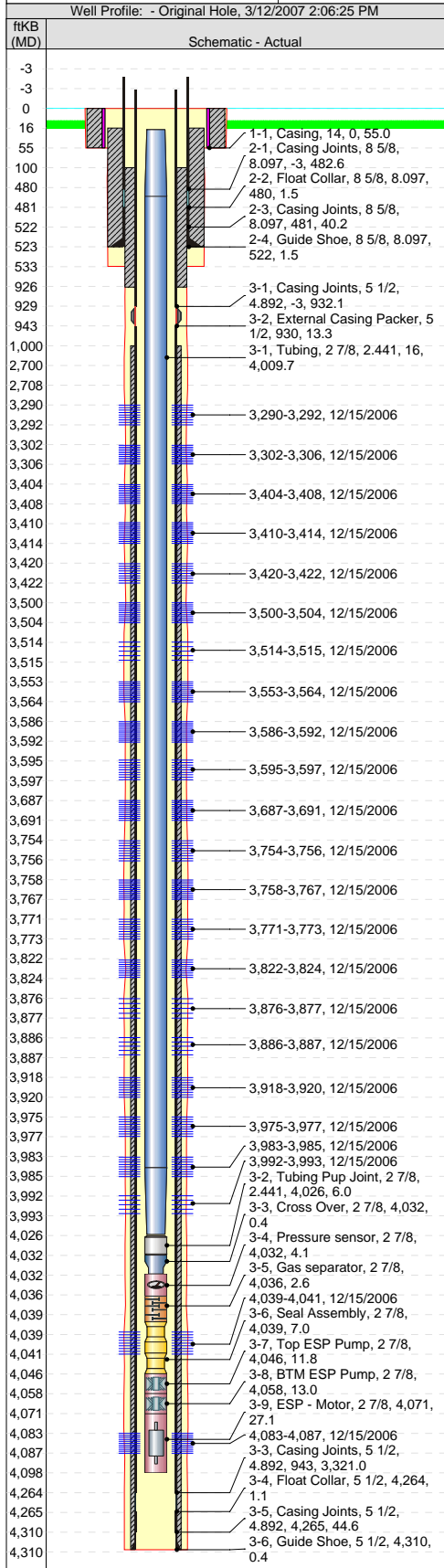
3,595.0-3,597.0ftKB on 12/15/2006 08:00							
Date	12/15/2006	Zone	<Zone?>, Original Hole	Top (ftKB)	3,595.0	Bottom (ftKB)	3,597.0
Perforation Company	Owen Oil Tools, Inc.	Conveyance Method	Wireline	Gun Size (in)	3 1/8	Carrier Make	Owen Oil Tool Inc.
Shot Density (shots/ft)	6.0	Charge Type	Shaped	Phasing (°)	60		
Orientation	Orientation Method						
Over/Under Balanced	Over/Under Pres (psi)	FL MD Before (ftKB)	FL MD After (ftKB)	P (init surf) (psi)	P (final surf) (psi)		
Balanced							
Perforation Statuses							
Date	Status	Comment					
3,687.0-3,691.0ftKB on 12/15/2006 08:00							
Date	12/15/2006	Zone	<Zone?>, Original Hole	Top (ftKB)	3,687.0	Bottom (ftKB)	3,691.0
Perforation Company	Owen Oil Tools, Inc.	Conveyance Method	Wireline	Gun Size (in)	3 1/8	Carrier Make	Owen Oil Tool Inc.
Shot Density (shots/ft)	6.0	Charge Type	Shaped	Phasing (°)	60		
Orientation	Orientation Method						
Over/Under Balanced	Over/Under Pres (psi)	FL MD Before (ftKB)	FL MD After (ftKB)	P (init surf) (psi)	P (final surf) (psi)		
Balanced							
Perforation Statuses							
Date	Status	Comment					
3,754.0-3,756.0ftKB on 12/15/2006 08:00							
Date	12/15/2006	Zone	<Zone?>, Original Hole	Top (ftKB)	3,754.0	Bottom (ftKB)	3,756.0
Perforation Company	Owen Oil Tools, Inc.	Conveyance Method	Wireline	Gun Size (in)	3 1/8	Carrier Make	Owen Oil Tool Inc.
Shot Density (shots/ft)	6.0	Charge Type	Shaped	Phasing (°)	60		
Orientation	Orientation Method						
Over/Under Balanced	Over/Under Pres (psi)	FL MD Before (ftKB)	FL MD After (ftKB)	P (init surf) (psi)	P (final surf) (psi)		
Balanced							
Perforation Statuses							
Date	Status	Comment					
3,758.0-3,767.0ftKB on 12/15/2006 08:00							
Date	12/15/2006	Zone	<Zone?>, Original Hole	Top (ftKB)	3,758.0	Bottom (ftKB)	3,767.0
Perforation Company	Owen Oil Tools, Inc.	Conveyance Method	Wireline	Gun Size (in)	3 1/8	Carrier Make	Owen Oil Tool Inc.
Shot Density (shots/ft)	6.0	Charge Type	Shaped	Phasing (°)	60		
Orientation	Orientation Method						
Over/Under Balanced	Over/Under Pres (psi)	FL MD Before (ftKB)	FL MD After (ftKB)	P (init surf) (psi)	P (final surf) (psi)		
Balanced							
Perforation Statuses							
Date	Status	Comment					
3,771.0-3,773.0ftKB on 12/15/2006 08:00							
Date	12/15/2006	Zone	<Zone?>, Original Hole	Top (ftKB)	3,771.0	Bottom (ftKB)	3,773.0
Perforation Company	Owen Oil Tools, Inc.	Conveyance Method	Wireline	Gun Size (in)	3 1/8	Carrier Make	Owen Oil Tool Inc.
Shot Density (shots/ft)	6.0	Charge Type	Shaped	Phasing (°)	60		
Orientation	Orientation Method						
Over/Under Balanced	Over/Under Pres (psi)	FL MD Before (ftKB)	FL MD After (ftKB)	P (init surf) (psi)	P (final surf) (psi)		
Balanced							



# Perforations

Well Name: Trenton Federal 44-2

API/UWI 05-081-07351-0000	Surface Legal Location	Lease Number COC 63308	Field Name LAY CREEK	State COLORADO
Well Profile	Original KB Elevation (ft) 6,787.00	KB-Ground Distance (ft) 16.00	KB-Casing Flange Distance (ft) 15.50	KB-Tubing Head Distance (ft)



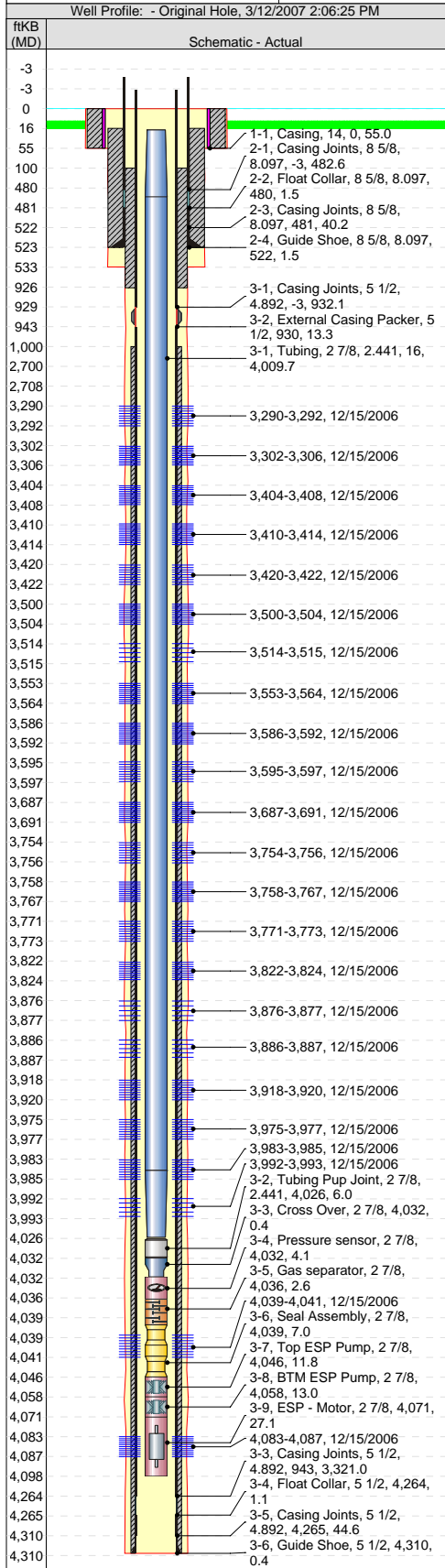
Perforation Statuses						
Date	Status	Comment				
<b>3,822.0-3,824.0ftKB on 12/15/2006 08:00</b>						
Date	Zone	Top (ftKB)	Bottom (ftKB)			
12/15/2006	<Zone?>, Original Hole	3,822.0	3,824.0			
Perforation Company	Conveyance Method	Gun Size (in)	Carrier Make			
Owen Oil Tools, Inc.	Wireline	3 1/8	Owen Oil Tool Inc.			
Shot Density (shots/ft)	Charge Type	Phasing (°)				
6.0	Shaped	60				
Orientation		Orientation Method				
Over/Under Balanced	Over/Under Pres (psi)	FL MD Before (ftKB)	FL MD After (ftKB)	P (init surf) (psi)	P (final surf) (psi)	
Balanced						
<b>Perforation Statuses</b>						
Date	Status	Comment				
<b>3,876.0-3,877.0ftKB on 12/15/2006 08:00</b>						
Date	Zone	Top (ftKB)	Bottom (ftKB)			
12/15/2006	<Zone?>, Original Hole	3,876.0	3,877.0			
Perforation Company	Conveyance Method	Gun Size (in)	Carrier Make			
Owen Oil Tools, Inc.	Wireline	3 1/8	Owen Oil Tool Inc.			
Shot Density (shots/ft)	Charge Type	Phasing (°)				
6.0	Shaped	60				
Orientation		Orientation Method				
Over/Under Balanced	Over/Under Pres (psi)	FL MD Before (ftKB)	FL MD After (ftKB)	P (init surf) (psi)	P (final surf) (psi)	
Balanced						
<b>Perforation Statuses</b>						
Date	Status	Comment				
<b>3,886.0-3,887.0ftKB on 12/15/2006 08:00</b>						
Date	Zone	Top (ftKB)	Bottom (ftKB)			
12/15/2006	<Zone?>, Original Hole	3,886.0	3,887.0			
Perforation Company	Conveyance Method	Gun Size (in)	Carrier Make			
Owen Oil Tools, Inc.	Wireline	3 1/8	Owen Oil Tool Inc.			
Shot Density (shots/ft)	Charge Type	Phasing (°)				
6.0	Shaped	60				
Orientation		Orientation Method				
Over/Under Balanced	Over/Under Pres (psi)	FL MD Before (ftKB)	FL MD After (ftKB)	P (init surf) (psi)	P (final surf) (psi)	
Balanced						
<b>Perforation Statuses</b>						
Date	Status	Comment				
<b>3,918.0-3,920.0ftKB on 12/15/2006 08:00</b>						
Date	Zone	Top (ftKB)	Bottom (ftKB)			
12/15/2006	<Zone?>, Original Hole	3,918.0	3,920.0			
Perforation Company	Conveyance Method	Gun Size (in)	Carrier Make			
Owen Oil Tools, Inc.	Wireline	3 1/8	Owen Oil Tool Inc.			
Shot Density (shots/ft)	Charge Type	Phasing (°)				
6.0	Shaped	60				
Orientation		Orientation Method				
Over/Under Balanced	Over/Under Pres (psi)	FL MD Before (ftKB)	FL MD After (ftKB)	P (init surf) (psi)	P (final surf) (psi)	
Balanced						
<b>Perforation Statuses</b>						
Date	Status	Comment				



# Perforations

Well Name: Trenton Federal 44-2

API/UWI 05-081-07351-0000	Surface Legal Location	Lease Number COC 63308	Field Name LAY CREEK	State COLORADO
Well Profile	Original KB Elevation (ft) 6,787.00	KB-Ground Distance (ft) 16.00	KB-Casing Flange Distance (ft) 15.50	KB-Tubing Head Distance (ft)



3,975.0-3,977.0ftKB on 12/15/2006 08:00							
Date	12/15/2006	Zone	<Zone?>, Original Hole	Top (ftKB)	3,975.0	Bottom (ftKB)	3,977.0
Perforation Company	Owen Oil Tools, Inc.	Conveyance Method	Wireline	Gun Size (in)	3 1/8	Carrier Make	Owen Oil Tool Inc.
Shot Density (shots/ft)	6.0	Charge Type	Shaped	Phasing (°)	60		
Orientation	Orientation Method						
Over/Under Balanced	Over/Under Pres (psi)	FL MD Before (ftKB)	FL MD After (ftKB)	P (init surf) (psi)	P (final surf) (psi)		
Balanced							
Perforation Statuses							
Date	Status	Comment					
3,983.0-3,985.0ftKB on 12/15/2006 08:00							
Date	12/15/2006	Zone	<Zone?>, Original Hole	Top (ftKB)	3,983.0	Bottom (ftKB)	3,985.0
Perforation Company	Owen Oil Tools, Inc.	Conveyance Method	Wireline	Gun Size (in)	3 1/8	Carrier Make	Owen Oil Tool Inc.
Shot Density (shots/ft)	6.0	Charge Type	Shaped	Phasing (°)	60		
Orientation	Orientation Method						
Over/Under Balanced	Over/Under Pres (psi)	FL MD Before (ftKB)	FL MD After (ftKB)	P (init surf) (psi)	P (final surf) (psi)		
Balanced							
Perforation Statuses							
Date	Status	Comment					
3,992.0-3,993.0ftKB on 12/15/2006 08:00							
Date	12/15/2006	Zone	<Zone?>, Original Hole	Top (ftKB)	3,992.0	Bottom (ftKB)	3,993.0
Perforation Company	Owen Oil Tools, Inc.	Conveyance Method	Wireline	Gun Size (in)	3 1/8	Carrier Make	Owen Oil Tool Inc.
Shot Density (shots/ft)	6.0	Charge Type	Shaped	Phasing (°)	60		
Orientation	Orientation Method						
Over/Under Balanced	Over/Under Pres (psi)	FL MD Before (ftKB)	FL MD After (ftKB)	P (init surf) (psi)	P (final surf) (psi)		
Balanced							
Perforation Statuses							
Date	Status	Comment					
4,039.0-4,041.0ftKB on 12/15/2006 08:00							
Date	12/15/2006	Zone	<Zone?>, Original Hole	Top (ftKB)	4,039.0	Bottom (ftKB)	4,041.0
Perforation Company	Owen Oil Tools, Inc.	Conveyance Method	Wireline	Gun Size (in)	3 1/8	Carrier Make	Owen Oil Tool Inc.
Shot Density (shots/ft)	6.0	Charge Type	Shaped	Phasing (°)	60		
Orientation	Orientation Method						
Over/Under Balanced	Over/Under Pres (psi)	FL MD Before (ftKB)	FL MD After (ftKB)	P (init surf) (psi)	P (final surf) (psi)		
Balanced							
Perforation Statuses							
Date	Status	Comment					
4,083.0-4,087.0ftKB on 12/15/2006 08:00							
Date	12/15/2006	Zone	<Zone?>, Original Hole	Top (ftKB)	4,083.0	Bottom (ftKB)	4,087.0
Perforation Company	Owen Oil Tools, Inc.	Conveyance Method	Wireline	Gun Size (in)	3 1/8	Carrier Make	Owen Oil Tool Inc.
Shot Density (shots/ft)	6.0	Charge Type	Shaped	Phasing (°)	60		
Orientation	Orientation Method						
Over/Under Balanced	Over/Under Pres (psi)	FL MD Before (ftKB)	FL MD After (ftKB)	P (init surf) (psi)	P (final surf) (psi)		
Balanced							



# Perforations

Well Name: Trenton Federal 44-2

API/UWI 05-081-07351-0000	Surface Legal Location	Lease Number COC 63308	Field Name LAY CREEK	State COLORADO
Well Profile	Original KB Elevation (ft) 6,787.00	KB-Ground Distance (ft) 16.00	KB-Casing Flange Distance (ft) 15.50	KB-Tubing Head Distance (ft)

Well Profile: - Original Hole, 3/12/2007 2:06:25 PM		Perforation Statuses		
ftKB (MD)	Schematic - Actual	Date	Status	Comment
-3				
0				
16				
55	1-1, Casing, 14, 0, 55.0			
100	2-1, Casing Joints, 8 5/8, 8.097, -3, 482.6			
480	2-2, Float Collar, 8 5/8, 8.097, 480, 1.5			
481	2-3, Casing Joints, 8 5/8, 8.097, 481, 40.2			
522	2-4, Guide Shoe, 8 5/8, 8.097, 522, 1.5			
523				
533				
926	3-1, Casing Joints, 5 1/2, 4.892, -3, 932.1			
929	3-2, External Casing Packer, 5 1/2, 930, 13.3			
943	3-1, Tubing, 2 7/8, 2.441, 16, 4.009.7			
1,000				
2,700				
2,708				
3,290				
3,292	3,290-3,292, 12/15/2006			
3,302	3,302-3,306, 12/15/2006			
3,306				
3,404	3,404-3,408, 12/15/2006			
3,408				
3,410	3,410-3,414, 12/15/2006			
3,414				
3,420	3,420-3,422, 12/15/2006			
3,422				
3,500	3,500-3,504, 12/15/2006			
3,504				
3,514	3,514-3,515, 12/15/2006			
3,515				
3,553	3,553-3,564, 12/15/2006			
3,564				
3,586	3,586-3,592, 12/15/2006			
3,592				
3,595	3,595-3,597, 12/15/2006			
3,597				
3,687	3,687-3,691, 12/15/2006			
3,691				
3,754	3,754-3,756, 12/15/2006			
3,756				
3,758	3,758-3,767, 12/15/2006			
3,767				
3,771	3,771-3,773, 12/15/2006			
3,773				
3,822	3,822-3,824, 12/15/2006			
3,824				
3,876	3,876-3,877, 12/15/2006			
3,877				
3,886	3,886-3,887, 12/15/2006			
3,887				
3,918	3,918-3,920, 12/15/2006			
3,920				
3,975	3,975-3,977, 12/15/2006			
3,977				
3,983	3,983-3,985, 12/15/2006			
3,985	3,992-3,993, 12/15/2006			
3,992	3-2, Tubing Pup Joint, 2 7/8, 2.441, 4,026, 6.0			
3,993	3-3, Cross Over, 2 7/8, 4,032, 0.4			
4,026	3-4, Pressure sensor, 2 7/8, 4,032, 4.1			
4,032	3-5, Gas separator, 2 7/8, 4,036, 2.6			
4,036	4,039-4,041, 12/15/2006			
4,039	3-6, Seal Assembly, 2 7/8, 4,039, 7.0			
4,039	3-7, Top ESP Pump, 2 7/8, 4,046, 11.8			
4,041	3-8, BTM ESP Pump, 2 7/8, 4,058, 13.0			
4,046	3-9, ESP - Motor, 2 7/8, 4,071, 27.1			
4,058	4,083-4,087, 12/15/2006			
4,071	3-3, Casing Joints, 5 1/2, 4.892, 943, 3,321.0			
4,083	3-4, Float Collar, 5 1/2, 4,264, 1.1			
4,087	3-5, Casing Joints, 5 1/2, 4.892, 4,265, 44.6			
4,098	3-6, Guide Shoe, 5 1/2, 4,310, 0.4			
4,264				
4,265				
4,310				
4,310				