

**HALLIBURTON**

---

# **WPX ENERGY ROCKY MOUNTAIN LLC-EBUS**

---

**GM 331-12  
GRAND VALLEY  
Garfield County , Colorado**

**Squeeze Perfs**  
**25-Jan-2013**

**Post Job Report**

## The Road to Excellence Starts with Safety

Sold To #: 300721		Ship To #: 2965209		Quote #:		Sales Order #: 900168233	
Customer: WPX ENERGY ROCKY MOUNTAIN LLC-EBUS				Customer Rep: Jacobs, Oran			
Well Name: GM			Well #: 331-12			API/UWI #: 05-045-21713	
Field: GRAND VALLEY		City (SAP): PARACHUTE		County/Parish: Garfield		State: Colorado	
Lat: N 39.462 deg. OR N 39 deg. 27 min. 41.494 secs.				Long: W 108.052 deg. OR W -109 deg. 56 min. 53.743 secs.			
Contractor: WORKOVER			Rig/Platform Name/Num: WORKOVER				
Job Purpose: Squeeze Perfs							
Well Type: Development Well				Job Type: Squeeze Perfs			
Sales Person: MAYO, MARK				Srv Supervisor: SLAUGHTER, JESSE   MBU ID Emp #: 454315			

## Job Personnel

HES Emp Name	Exp Hrs	Emp #	HES Emp Name	Exp Hrs	Emp #	HES Emp Name	Exp Hrs	Emp #
BLANCHETTE, JAMES George	9.5	371360	BURKE, BRENDAN Patrick	9.5	487782	KAMMEIER, CHRISTOPHER Michael	9.5	524554
SLAUGHTER, JESSE Dean	9.5	454315						

## Equipment

HES Unit #	Distance-1 way	HES Unit #	Distance-1 way	HES Unit #	Distance-1 way	HES Unit #	Distance-1 way
10248065	60 mile	10871245	60 mile	11164589	60 mile	11259885	60 mile
11808847	60 mile						

## Job Hours

Date	On Location Hours	Operating Hours	Date	On Location Hours	Operating Hours	Date	On Location Hours	Operating Hours
1-25-2013	9.5	4						

TOTAL Total is the sum of each column separately

Job				Job Times			
Formation Name				Date	Time	Time Zone	
Formation Depth (MD)	Top	Bottom		Called Out	25 - Jan - 2013	04:00	MST
Form Type		BHST		On Location	25 - Jan - 2013	07:30	MST
Job depth MD	5232. ft	Job Depth TVD	5232. ft	Job Started	25 - Jan - 2013	13:02	MST
Water Depth		Wk Ht Above Floor	4. ft	Job Completed	25 - Jan - 2013	15:20	MST
Perforation Depth (MD)	From	To		Departed Loc	25 - Jan - 2013	17:00	MST

## Well Data

Description	New / Used	Max pressure psig	Size in	ID in	Weight lbm/ft	Thread	Grade	Top MD ft	Bottom MD ft	Top TVD ft	Bottom TVD ft
-------------	------------	-------------------	---------	-------	---------------	--------	-------	-----------	--------------	------------	---------------

## Tools and Accessories

Type	Size	Qty	Make	Depth	Type	Size	Qty	Make	Depth	Type	Size	Qty	Make
Guide Shoe					Packer					Top Plug			
Float Shoe					Bridge Plug	4.5	1		5257	Bottom Plug			
Float Collar					Retainer					SSR plug set			
Insert Float										Plug Container			
Stage Tool										Centralizers			

## Miscellaneous Materials

Gelling Agt	Conc	Surfactant	Conc	Acid Type	Qty	Conc	%
Treatment Fld	Conc	Inhibitor	Conc	Sand Type	Size		Qty

## Fluid Data

Stage/Plug #: 1									
Fluid #	Stage Type	Fluid Name	Qty	Qty uom	Mixing Density lbm/gal	Yield ft <sup>3</sup> /sk	Mix Fluid Gal/sk	Rate bbl/min	Total Mix Fluid Gal/sk

Stage/Plug #: 1

Stage/Plug #: 1									
Fluid #	Stage Type	Fluid Name	Qty	Qty uom	Mixing Density lbm/gal	Yield ft3/sk	Mix Fluid Gal/sk	Rate bbl/min	Total Mix Fluid Gal/sk
1	Injection Test	PRODUCTION WATER	2.00	bbl	8.33	.0	.0	.5	
2	SqueezeCem Tail Cement	SQUEEZECM (TM) SYSTEM (452971)	50.0	sacks	15.8	1.15	4.97	2	4.97
	4.97 Gal	FRESH WATER							
3	Displacement	FRESH WATER	17.5	bbl	8.33	.0	.0	2.5	
Calculated Values		Pressures		Volumes					
Displacement	17.5	Shut In: Instant	725	Lost Returns	NO	Cement Slurry	10.2	Pad	
Top Of Cement	4589	5 Min		Cement Returns	NO	Actual Displacement	17.5	Treatment	
Frac Gradient		15 Min		Spacers	7	Load and Breakdown		Total Job	38
Rates									
Circulating		Mixing	2	Displacement	2.5	Avg. Job	2		
Cement Left In Pipe	Amount	0 ft	Reason	Shoe Joint					
Frac Ring # 1 @	ID	Frac ring # 2 @	ID	Frac Ring # 3 @	ID	Frac Ring # 4 @	ID		
The Information Stated Herein Is Correct				Customer Representative Signature					



*The Road to Excellence Starts with Safety*

Sold To #: 300721	Ship To #: 2965209	Quote #:	Sales Order #: 900168233
Customer: WPX ENERGY ROCKY MOUNTAIN LLC-EBUS	Customer Rep: Jacobs, Oran		
Well Name: GM	Well #: 331-12	API/UWI #: 05-045-21713	
Field: GRAND VALLEY	City (SAP): PARACHUTE	County/Parish: Garfield	State: Colorado
Legal Description:			
Lat: N 39.462 deg. OR N 39 deg. 27 min. 41.494 secs.		Long: W 108.052 deg. OR W -109 deg. 56 min. 53.743 secs.	
Contractor: WORKOVER	Rig/Platform Name/Num: WORKOVER		
Job Purpose: Squeeze Perfs	Ticket Amount:		
Well Type: Development Well	Job Type: Squeeze Perfs		
Sales Person: MAYO, MARK	Srvc Supervisor: SLAUGHTER, JESSE	MBU ID Emp #: 454315	

Activity Description	Date/Time	Cht #	Rate bbl/min	Volume bbl		Pressure psig		Comments
				Stage	Total	Tubing	Casing	
Call Out	01/25/2013 04:00							BRIDGE PLUG 5257 FT, PERF 25 HOLES FROM 4929 FT TO 5233 FT, TUB 2 3/8 IN 4.7 LB/FT SET AT 5247 FT, CSG 4 1/2 IN 11.6 LB/FT
Pre-Convoy Safety Meeting	01/25/2013 05:50							WITH ALL HES PERSONNEL
Crew Leave Yard	01/25/2013 06:00							
Arrive At Loc	01/25/2013 07:30							RIG WAS SPOTTING INTO LOCATION UPON HES ARRIVAL, EQUIPMENT WAS STAGED AT ENTRANCE OF LOCATION UNTIL REQUESTED
Assessment Of Location Safety Meeting	01/25/2013 10:30							WITH ALL HES PERSONNEL
Other	01/25/2013 10:40							SPOT EQUIPMENT
Pre-Rig Up Safety Meeting	01/25/2013 10:50							WITH ALL HES PERSONNEL
Rig-Up Equipment	01/25/2013 11:00							
Pre-Job Safety Meeting	01/25/2013 12:50							WITH ALL PERSONNEL ON LOCATION
Start Job	01/25/2013 13:02							
Other	01/25/2013 13:02		1	1			99.0	FILL LINES WITH FRESH WATER
Test Lines	01/25/2013 13:05							TESTED LINES TO 5870 PSI PRESSURE HOLDING

Sold To #: 300721

Ship To #: 2965209

Quote #:

Sales Order #: 900168233

SUMMIT Version: 7.3.0073

Friday, February 01, 2013 03:25:00

## Cementing Job Log

Activity Description	Date/Time	Cht #	Rate bbl/min	Volume bbl		Pressure psig		Comments
				Stage	Total	Tubing	Casing	
Pump Spacer 1	01/25/2013 13:10		0.5	5			756.0	PRODUCTION WATER. INJECTION TEST
Shutdown	01/25/2013 13:19							SHUTDOWN. ISIP AT 725 PSI, HES WAITED 15 MIN AS PER COMPANY REP
Pump Spacer	01/25/2013 13:52		2	5			370.0	FRESH WATER BEHIND
Pump Tail Cement	01/25/2013 13:55		2	10.2			370.0	50 SKS AT 15.8 PPG, 1.15 FT3/SK, 4.79 GAL/SK
Pump Displacement	01/25/2013 13:59		2.5	17.5			120.0	FRESH WATER
Shutdown	01/25/2013 14:06							PLUG BALLANCED
Other	01/25/2013 14:09							RIG PULLED 12 STANDS AT 30 FT PER MIN, PIPE PULLED DRY. RIG SET PIPE AT 4089 FT
Clean Lines	01/25/2013 14:19							CLEAN PUMPS AND LINES TO THE PIT
Pump Water	01/25/2013 14:19		0.4	0.5			830.0	WELL PULLED 1 1/2 BBL WATER OFF TRUCK BEFORE HES PUMPED. SHUTDOWN AS PER COMPANY REP WAITED 8 MIN
Other	01/25/2013 14:47		0.4	0.25			1030.0	HESITATION #1. SHUTDOWN AS PER COMPANY REP WAITED 8 MIN
Other	01/25/2013 14:56		0.4				1560.0	HESITATION #2
Release Casing Pressure	01/25/2013 15:10							HES RETURNED 1 1/2 BBL H2O TO PUMP
Reverse Circ Well	01/25/2013 15:12			25				RIG REVERSE CIRCULATED WELL
End Job	01/25/2013 15:20							NO TUBING ROTARY SUB USED, NO SQUEEZE MANIFOLD USED. NO SUGAR USED FOR THE JOB
Pre-Rig Down Safety Meeting	01/25/2013 15:30							WITH ALL HES PERSONNEL
Rig-Down Equipment	01/25/2013 15:35							

Sold To #: 300721

Ship To #: 2965209

Quote #:

Sales Order #: 900168233

SUMMIT Version: 7.3.0073

Friday, February 01, 2013 03:25:00

## Cementing Job Log

Activity Description	Date/Time	Cht #	Rate bbl/ min	Volume bbl		Pressure psig		Comments
				Stage	Total	Tubing	Casing	
Pre-Convoy Safety Meeting	01/25/2013 16:50							WITH ALL HES PERSONNEL
Crew Leave Location	01/25/2013 17:00							
Comment	01/25/2013 17:01							THANK YOU FOR USING HALLIBURTON CEMENT DEPARTMENT. JESSE SLAUGHTER AND CREW

Sold To # : 300721

Ship To # :2965209

Quote # :

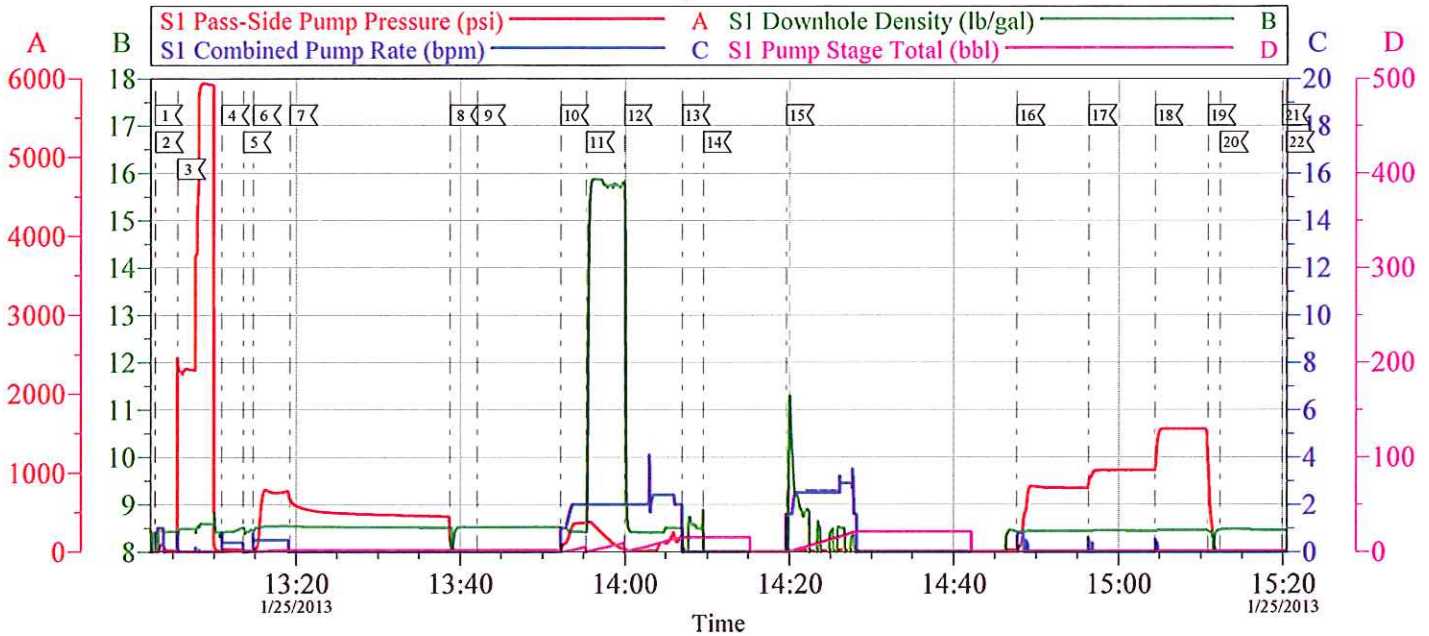
Sales Order # : 900168233

SUMMIT Version: 7.3.0073

Friday, February 01, 2013 03:25:00



# WPX GM 331-12 SQUEEZE



## Local Event Log

1 START JOB	13:02:45	2 PRIME LINES	13:02:52	3 TEST LINES	13:05:34
4 PUMP PRODUCTION WATER	13:10:55	5 DOWN TO CLOSE BRAIDEN HEAD	13:13:34	6 RESUME PUMPING	13:14:46
7 ISIP	13:19:15	8 RELEASE PRESSURE	13:38:44	9 MIX TUB OF CEMENT	13:42:06
10 PUMP FRESH WATER BEHIND	13:52:13	11 PUMP CEMENT	13:55:18	12 PUMP DISPLACEMENT	13:59:55
13 SHUTDOWN	14:06:58	14 RIG PULL STANDS	14:09:30	15 WASH PUMPS AND LINES	14:19:37
16 HESITATION #1	14:47:41	17 HESITATION #2	14:56:23	18 HESITATION #3	15:04:26
19 RELEASE PRESSURE	15:10:51	20 RIG REVERSE CIRCULATE	15:12:21	21 SHUTDOWN	15:19:55
22 END JOB	15:20:25				

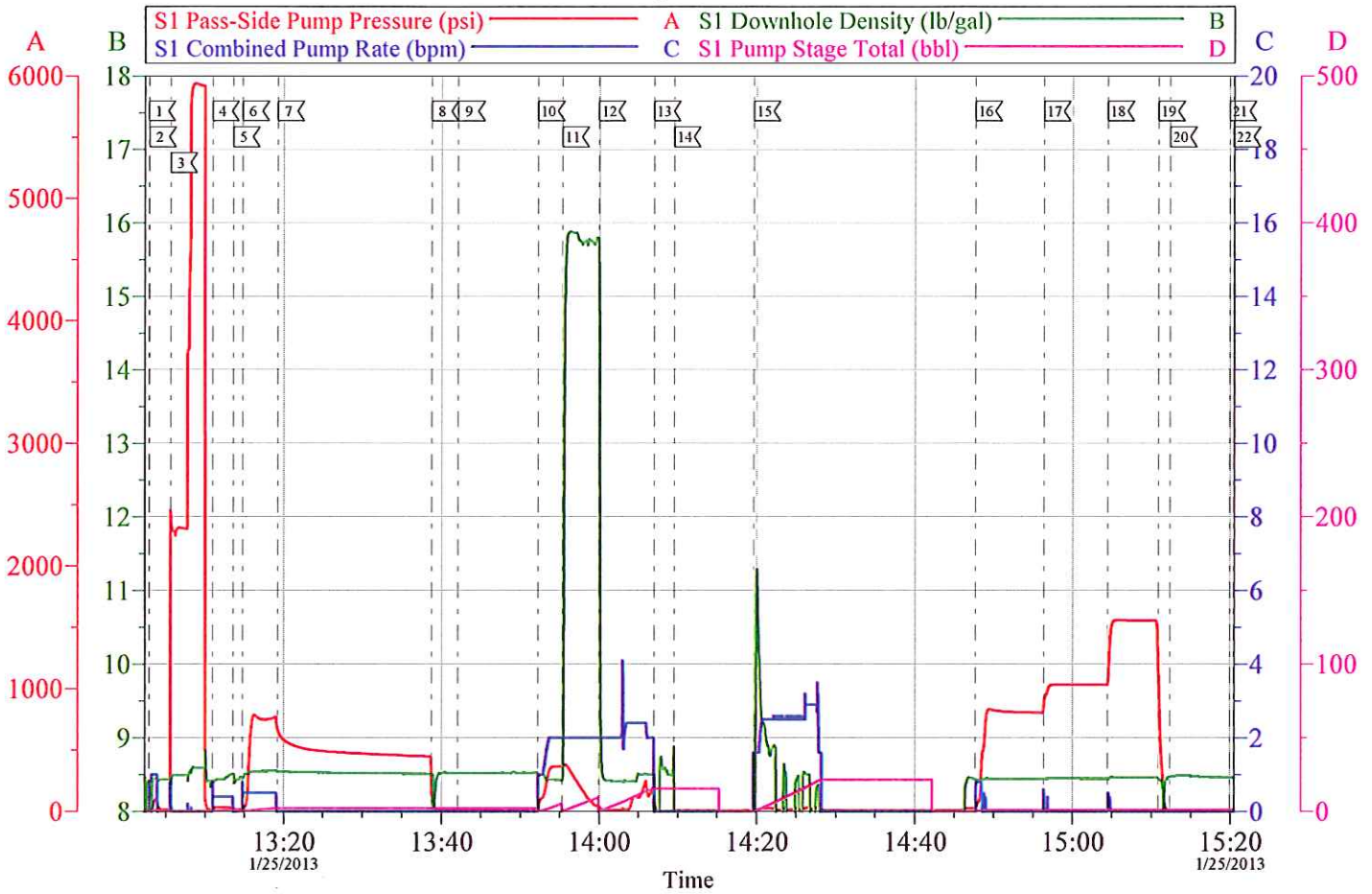
Customer: WPX  
Well Description: GM 331-12  
Customer Rep: ORAN JACOBS

Job Date: 25-Jan-2013  
Job Type: SQUEEZE  
Cement Supervisor: JESSE SLAUGHTER

Sales Order #: 900168233  
ADC Used: YES  
Elite #7: BRENDAN BURKE

OptiCem v6.4.10  
25-Jan-13 15:29

# WPX GM 331-12 SQUEEZE



Customer: WPX	Job Date: 25-Jan-2013	Sales Order #: 900168233
Well Description: GM 331-12	Job Type: SQUEEZE	ADC Used: YES
Customer Rep: ORAN JACOBS	Cement Supervisor: JESSE SLAUGHTER	Elite #7: BRENDAN BURKE

OptiCem v6.4.10  
25-Jan-13 15:30