

HALLIBURTON

WPX ENERGY ROCKY MOUNTAIN LLC-EBUS

**GM 331-12
GRAND VALLEY
Garfield County , Colorado**

Cement Surface Casing

09-Dec-2012

Post Job Report

The Road to Excellence Starts with Safety

Sold To #: 300721		Ship To #: 2965209		Quote #:		Sales Order #: 900019155	
Customer: WPX ENERGY ROCKY MOUNTAIN LLC-EBUS				Customer Rep: Moore, Frank			
Well Name: GM			Well #: 331-12			API/UWI #: 05-045-21713	
Field: GRAND VALLEY		City (SAP): PARACHUTE		County/Parish: Garfield		State: Colorado	
Lat: N 39.462 deg. OR N 39 deg. 27 min. 41.494 secs.				Long: W 108.052 deg. OR W -109 deg. 56 min. 53.743 secs.			
Contractor: CYCLONE 17			Rig/Platform Name/Num: CYCLONE 17				
Job Purpose: Cement Surface Casing							
Well Type: Development Well			Job Type: Cement Surface Casing				
Sales Person: MAYO, MARK			Srv Supervisor: ARNOLD, EDWARD			MBU ID Emp #: 439784	

Job Personnel

HES Emp Name	Exp Hrs	Emp #	HES Emp Name	Exp Hrs	Emp #	HES Emp Name	Exp Hrs	Emp #
ARNOLD, EDWARD John	5.5	439784	ROMKEE, DALE Alan	5.5	488215	ROSE, BENJAMIN Keith	5.5	487022
SALAZAR, PAUL Omar	5.5	445614						

Equipment

HES Unit #	Distance-1 way	HES Unit #	Distance-1 way	HES Unit #	Distance-1 way	HES Unit #	Distance-1 way
10616651C	60 mile	10867423	60 mile	10867425	60 mile	10897891	60 mile
11259882	60 mile	11562538	60 mile	11808827	60 mile		

Job Hours

Date	On Location Hours	Operating Hours	Date	On Location Hours	Operating Hours	Date	On Location Hours	Operating Hours
12-9-2012	5.5	3						

TOTAL Total is the sum of each column separately

Job				Job Times			
Formation Name				Date	Time	Time Zone	
Formation Depth (MD)	Top		Bottom	Called Out	09 - Dec - 2012	02:30	MST
Form Type		BHST		On Location	09 - Dec - 2012	06:00	MST
Job depth MD	1355. ft	Job Depth TVD	1355. ft	Job Started	09 - Dec - 2012	08:38	MST
Water Depth		Wk Ht Above Floor	4. ft	Job Completed	09 - Dec - 2012	09:55	MST
Perforation Depth (MD)	From		To	Departed Loc	09 - Dec - 2012	11:30	MST

Well Data

Description	New / Used	Max pressure psig	Size in	ID in	Weight lbm/ft	Thread	Grade	Top MD ft	Bottom MD ft	Top TVD ft	Bottom TVD Ft
-------------	------------	-------------------	---------	-------	---------------	--------	-------	-----------	--------------	------------	---------------

Sales/Rental/3rd Party (HES)

Description	Qty	Qty uom	Depth	Supplier
PLUG,CMTG,TOP,9 5/8,HWE,8.16 MIN/9.06 MA	1	EA		

Tools and Accessories

Type	Size	Qty	Make	Depth	Type	Size	Qty	Make	Depth	Type	Size	Qty	Make
Guide Shoe					Packer					Top Plug	9.625	1	HES
Float Shoe					Bridge Plug					Bottom Plug			
Float Collar					Retainer					SSR plug set			
Insert Float										Plug Container	9.625	1	HES
Stage Tool										Centralizers			

Miscellaneous Materials

Gelling Agt	Conc	Surfactant	Conc	Acid Type	Qty	Conc	%
Treatment Fld	Conc	Inhibitor	Conc	Sand Type	Size	Qty	

Fluid Data

Stage/Plug #: 1									
Fluid #	Stage Type	Fluid Name	Qty	Qty uom	Mixing Density lbm/gal	Yield ft ³ /sk	Mix Fluid Gal/sk	Rate bbl/min	Total Mix Fluid Gal/sk

Stage/Plug #: 1									
Fluid #	Stage Type	Fluid Name	Qty	Qty uom	Mixing Density lbm/gal	Yield ft ³ /sk	Mix Fluid Gal/sk	Rate bbl/min	Total Mix Fluid Gal/sk
1	Fresh Water Spacer		20.00	bbl	.	.0	.0	3	
2	VersaCem Lead Cement	VERSACEM (TM) SYSTEM (452010)	200.0	sacks	12.3	2.38	13.75	7	13.75
		13.75 Gal FRESH WATER							
3	VersaCem Tail Cement	VERSACEM (TM) SYSTEM (452010)	160.0	sacks	12.8	2.11	11.75	7	11.75
		11.75 Gal FRESH WATER							
4	Fresh Water Displacement		102.00	bbl	.	.0	.0	10	
Calculated Values			Pressures		Volumes				
Displacement	102	Shut In: Instant		Lost Returns		Cement Slurry	144.8	Pad	
Top Of Cement	SURFACE	5 Min		Cement Returns	40	Actual Displacement	102	Treatment	
Frac Gradient		15 Min		Spacers	20	Load and Breakdown		Total Job	266.8
Rates									
Circulating	RIG	Mixing	7	Displacement	5	Avg. Job	6		
Cement Left In Pipe	Amount	43.3 FT	Reason	Shoe Joint					
Frac Ring # 1 @	ID	Frac ring # 2 @	ID	Frac Ring # 3 @	ID	Frac Ring # 4 @	ID		
The Information Stated Herein Is Correct				Customer Representative Signature					

The Road to Excellence Starts with Safety

Sold To #: 300721	Ship To #: 2965209	Quote #:	Sales Order #: 900019155
Customer: WPX ENERGY ROCKY MOUNTAIN LLC-EBUS	Customer Rep: Moore, Frank		
Well Name: GM	Well #: 331-12	API/UWI #: 05-045-21713	
Field: GRAND VALLEY	City (SAP): PARACHUTE	County/Parish: Garfield	State: Colorado
Legal Description:			
Lat: N 39.462 deg. OR N 39 deg. 27 min. 41.494 secs.		Long: W 108.052 deg. OR W -109 deg. 56 min. 53.743 secs.	
Contractor: CYCLONE 17	Rig/Platform Name/Num: CYCLONE 17		
Job Purpose: Cement Surface Casing	Ticket Amount:		
Well Type: Development Well	Job Type: Cement Surface Casing		
Sales Person: MAYO, MARK	Srvc Supervisor: ARNOLD, EDWARD	MBU ID Emp #: 439784	

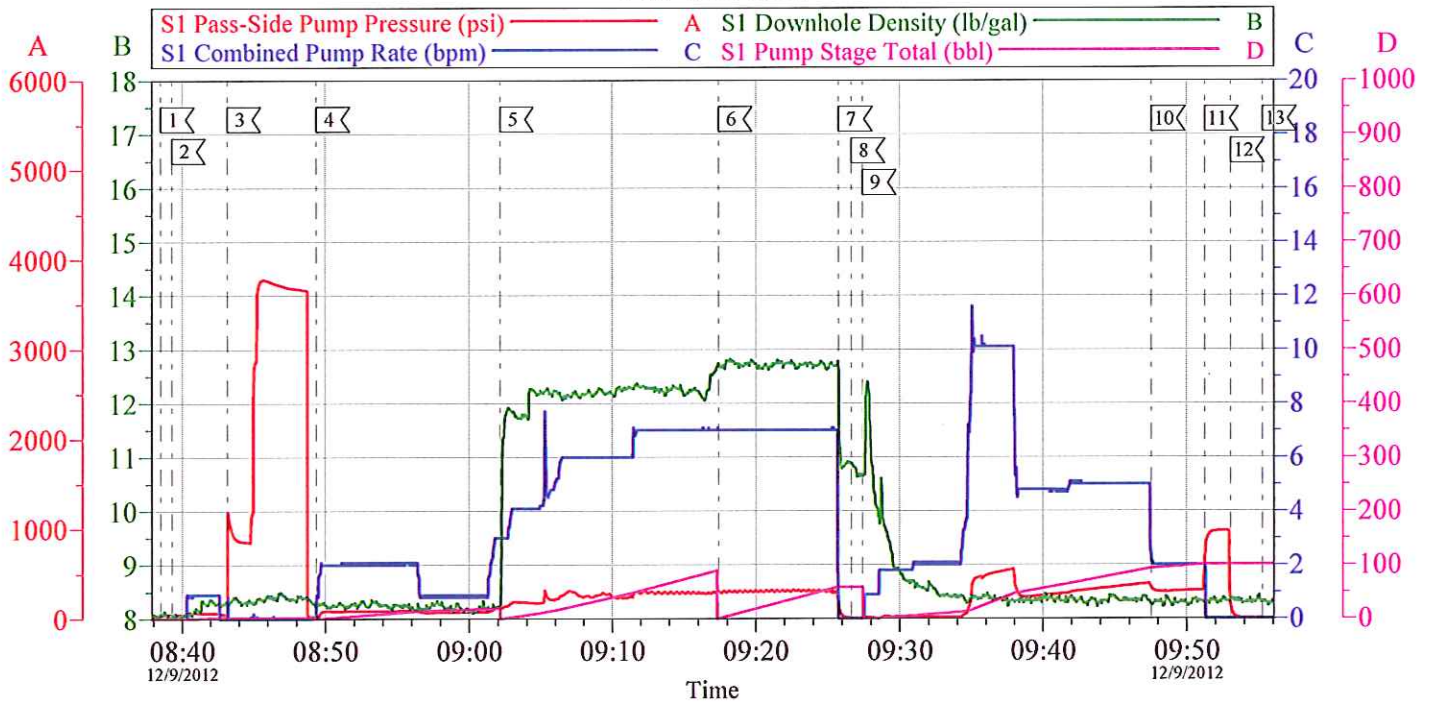
Activity Description	Date/Time	Cht #	Rate bbl/min	Volume bbl		Pressure psig		Comments
				Stage	Total	Tubing	Casing	
Call Out	12/09/2012 02:30							Crew called out.
Pre-Convoy Safety Meeting	12/09/2012 04:15							Including entire cement crew, discuss hazards, route, and safety.
Crew Leave Yard	12/09/2012 04:30							Leave yard for location.
Arrive At Loc	12/09/2012 06:00							
Assessment Of Location Safety Meeting	12/09/2012 07:00							Including entire cement crew, discussed hazards, and rig up. Water test: PH 7; KCL 250; SO4 <200; FE 0; CHLORIDES 0; CALCIUM 120; TEMP 40; TDS 210.
Pre-Rig Up Safety Meeting	12/09/2012 07:15							
Rig-Up Equipment	12/09/2012 07:20							1 Elite # 4; 3 660 Bulk Truck; 1 hard line to rig floor; 1 line to rig tank; 1 line to upright; 1 9 5/8" compact head.
Rig-Up Completed	12/09/2012 08:20							
Pre-Job Safety Meeting	12/09/2012 08:25							Including everyone on location. Discussed hazards, emergency situations, and job procedure.
Start Job	12/09/2012 08:38							TD 1355; TP 1341; SJ 43.3; OH 13 1/2"; CASING 9 5/8" 32.3# H-40; MUD 10.6 PPG.

Cementing Job Log

Activity Description	Date/Time	Cht #	Rate bbl/ min	Volume bbl		Pressure psig		Comments
				Stage	Total	Tubing	Casing	
Pump Water	12/09/2012 08:39		1	2			40.0	Fresh water ahead to fill lines.
Test Lines	12/09/2012 08:43					3775.0		Test line to psi, Found no leaks, good test.
Pump Spacer 1	12/09/2012 08:49		3	20			118.0	20 BBL's fresh water.
Pump Lead Cement	12/09/2012 09:02		7	84.7			293.0	200 sks Lead cement, 12.3 ppg, 2.38 cf3, 13.75gal/sk.
Pump Tail Cement	12/09/2012 09:17		7	60.1			309.0	160 sks Tail cement, 12.8 ppg, 2.11cf3, 11.75 gal/sk.
Shutdown	12/09/2012 09:25							
Drop Plug	12/09/2012 09:26							Plug left Container.
Pump Displacement	12/09/2012 09:27		10	92			560.0	Fresh water displacement.
Slow Rate	12/09/2012 09:47		2	10			318.0	Slow rate last 10 BBL's of displacement prior to bumping the plug.
Bump Plug	12/09/2012 09:51				102		977.0	Plug landed. Took to 977 psi.
Check Floats	12/09/2012 09:53							Floats Held. 3/4 BBL's back. 40 BBL's of good cement to surface. 80# of sugar used.
End Job	12/09/2012 09:55							
Pre-Rig Down Safety Meeting	12/09/2012 10:00							Including entire cement crew, discussed hazards and safety.
Rig-Down Equipment	12/09/2012 10:10							
Pre-Convoy Safety Meeting	12/09/2012 11:15							Including entire cement crew, discussed hazards, route, and safety.
Crew Leave Location	12/09/2012 11:30							
Other	12/09/2012 11:30							Thank You for using Halliburton, Ed Arnold and Crew.

WPX - GM 331-12

9 5/8" SURFACE

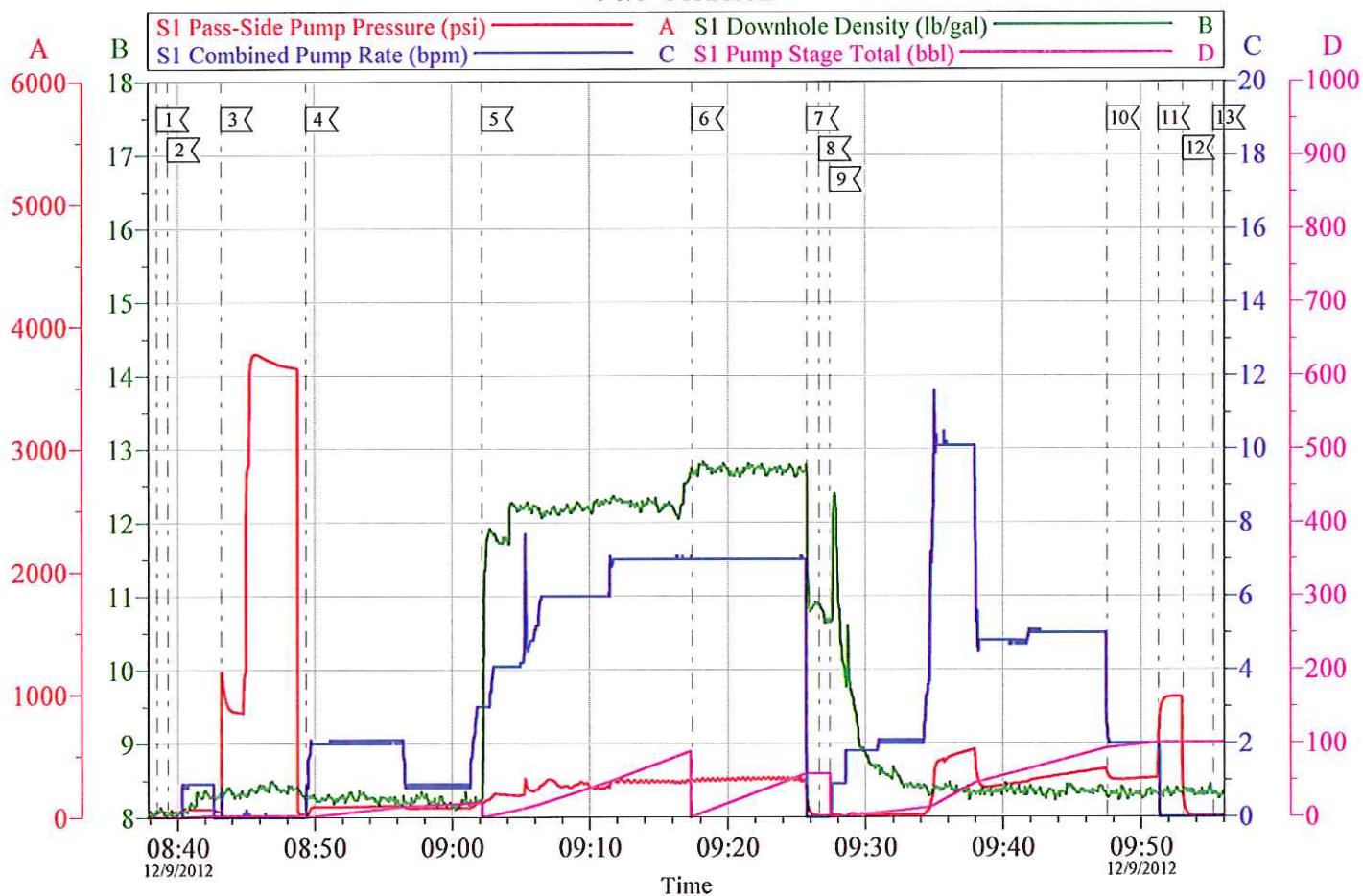


Local Event Log					
1 START JOB	08:38:32	2 FILL LINES	08:39:18	3 TEST LINES	08:43:11
4 H2O SPACER	08:49:23	5 LEAD CEMENT	09:02:09	6 TAIL CEMENT	09:17:25
7 SHUT DOWN	09:25:45	8 DROP PLUG	09:26:37	9 H2O DISPLACEMENT	09:27:24
10 SLOW RATE	09:47:33	11 BUMP PLUG	09:51:15	12 CHECK FLOATS	09:53:04
13 END JOB	09:55:16				

Customer: WPX	Job Date: 09-Dec-2012	Sales Order #: 900019155
Well Description: GM 331-12	Job Type: SURFACE	ADC Used: YES
Company Rep: FRANK MORRE	Cement Supervisor: ED ARNOLD	Elite #4: BEN ROSE

OptiCem v6.4.10
09-Dec-12 10:12

WPX - GM 331-12 9 5/8" SURFACE



Customer: WPX	Job Date: 09-Dec-2012	Sales Order #: 900019155
Well Description: GM 331-12	Job Type: SURFACE	ADC Used: YES
Company Rep: FRANK MORRE	Cement Supervisor: ED ARNOLD	Elite #4: BEN ROSE

OptiCem v6.4.10
09-Dec-12 10:13