

HALLIBURTON

WPX ENERGY ROCKY MOUNTAIN LLC-EBUS

**GM 41-12
GRAND VALLEY
Garfield County , Colorado**

Cement Surface Casing

03-Dec-2012

Post Job Summary

The Road to Excellence Starts with Safety

Sold To #: 300721		Ship To #: 2965178		Quote #:		Sales Order #: 900019142	
Customer: WPX ENERGY ROCKY MOUNTAIN LLC-EBUS				Customer Rep: Duniho, Al			
Well Name: GM		Well #: 41-12		API/UWI #: 05-045-21715			
Field: GRAND VALLEY		City (SAP): PARACHUTE		County/Parish: Garfield		State: Colorado	
Lat: N 39.462 deg. OR N 39 deg. 27 min. 41.422 secs.				Long: W 108.052 deg. OR W -109 deg. 56 min. 53.776 secs.			
Contractor: CYCLONE 17		Rig/Platform Name/Num: CYCLONE 17					
Job Purpose: Cement Surface Casing							
Well Type: Development Well				Job Type: Cement Surface Casing			
Sales Person: MAYO, MARK				Srv Supervisor: CASTILLO, FRANCISCO		MBU ID Emp #: 513620	
Job Personnel							
HES Emp Name	Exp Hrs	Emp #	HES Emp Name	Exp Hrs	Emp #	HES Emp Name	Exp Hrs
CASTILLO, FRANCISCO P	3.5	513620	LAULAMEN, ROGER	3.5		SMITH, CHRISTOPHER Scott	3.5
WOLFE, JON P	3.5	485217					452619
Equipment							
HES Unit #	Distance-1 way	HES Unit #	Distance-1 way	HES Unit #	Distance-1 way	HES Unit #	Distance-1 way
10565341	60 mile	10616651C	60 mile	10973571	60 mile	11259884	60 mile
11808827	60 mile						
Job Hours							
Date	On Location Hours	Operating Hours	Date	On Location Hours	Operating Hours	Date	On Location Hours
12/2/12	2.5	1	12/3/12	1	0		
TOTAL		3.5	Total is the sum of each column separately				
Job				Job Times			
Formation Name				Date	Time	Time Zone	
Formation Depth (MD) Top Bottom 830				Called Out	02 - Dec - 2012	18:29	MST
Form Type BHST				On Location	02 - Dec - 2012	21:30	MST
Job depth MD 830. ft Job Depth TVD 830. ft				Job Started	03 - Dec - 2012	23:06	MST
Water Depth Wk Ht Above Floor 3. ft				Job Completed	03 - Dec - 2012	23:50	MST
Perforation Depth (MD) From To				Departed Loc	03 - Dec - 2012	01:00	MST
Well Data							
Description	New / Used	Max pressure psig	Size in	ID in	Weight lbm/ft	Thread	Grade
							Top MD ft Bottom MD ft Top TVD ft Bottom TVD ft
Sales/Rental/3 rd Party (HES)							
Description				Qty	Qty uom	Depth	Supplier
PLUG,CMTG,TOP,9 5/8,HWE,8.16 MIN/9.06 MA				1	EA		
Tools and Accessories							
Type	Size	Qty	Make	Depth	Type	Size	Qty
Guide Shoe	9.625	1	WTF	826.8	Packer		
Float Shoe					Bridge Plug		
Float Collar	9.625	1	WTF	782.72	Retainer		
Insert Float							
Stage Tool							
Miscellaneous Materials							
Gelling Agt		Conc		Surfactant		Conc	Acid Type
Treatment Fld		Conc		Inhibitor		Conc	Sand Type
							Qty Conc %
							Size Qty
Fluid Data							
Stage/Plug #: 1							
Fluid #	Stage Type	Fluid Name			Qty	Qty uom	Mixing Density lbm/gal
							Yield ft3/sk Mix Fluid Gal/sk Rate bbl/min Total Mix Fluid Gal/sk

HALLIBURTON**Cementing Job Summary**

Stage/Plug #: 1									
Fluid #	Stage Type	Fluid Name	Qty	Qty uom	Mixing Density lbm/gal	Yield ft ³ /sk	Mix Fluid Gal/sk	Rate bbl/min	Total Mix Fluid Gal/sk
1	Fresh Water Spacer		20.00	bbl	.	.0	.0	4	
2	VersaCem Tail Cement	VERSACEM (TM) SYSTEM (452010)	220.0	sacks	12.8	2.11	11.75	8	11.75
11.75 Gal		FRESH WATER							
3	Fresh Water Displacement		62.00	bbl	.	.0	.0	10	
Calculated Values		Pressures		Volumes					
Displacement	62	Shut In: Instant		Lost Returns	NONE	Cement Slurry		Pad	
Top Of Cement	SURFACE	5 Min		Cement Returns	5	Actual Displacement	62	Treatment	
Frac Gradient		15 Min		Spacers	20	Load and Breakdown		Total Job	165
Rates									
Circulating	RIG	Mixing	8	Displacement	10	Avg. Job	7.5		
Cement Left In Pipe	Amount	44.08 ft	Reason	Shoe Joint					
Frac Ring # 1 @	ID	Frac ring # 2 @	ID	Frac Ring # 3 @	ID	Frac Ring # 4 @	ID		
The Information Stated Herein Is Correct				Customer Representative Signature					

The Road to Excellence Starts with Safety

Sold To #: 300721	Ship To #: 2965178	Quote #:	Sales Order #: 900019142
Customer: WPX ENERGY ROCKY MOUNTAIN LLC-EBUS	Customer Rep: Duniho, Al		
Well Name: GM	Well #: 41-12	API/UWI #: 05-045-21715	
Field: GRAND VALLEY	City (SAP): PARACHUTE	County/Parish: Garfield	State: Colorado
Legal Description:			
Lat: N 39.462 deg. OR N 39 deg. 27 min. 41.422 secs.		Long: W 108.052 deg. OR W -109 deg. 56 min. 53.776 secs.	
Contractor: CYCLONE 17	Rig/Platform Name/Num: CYCLONE 17		
Job Purpose: Cement Surface Casing			Ticket Amount:
Well Type: Development Well	Job Type: Cement Surface Casing		
Sales Person: MAYO, MARK	Srvc Supervisor: CASTILLO, FRANCISCO	MBU ID Emp #: 513620	

Activity Description	Date/Time	Cht #	Rate bbl/min	Volume bbl		Pressure psig		Comments
				Stage	Total	Tubing	Casing	
Pre-Convoy Safety Meeting	12/02/2012 20:20							ALL HES PERSONEL
Crew Leave Yard	12/02/2012 20:30							
Arrive At Loc	12/02/2012 21:30							
Assessment Of Location Safety Meeting	12/02/2012 21:45							ALL HES PERSONEL
Rig-Up Equipment	12/02/2012 21:55							1-ELITE, 1-660 BULK TRUCK, PUMPING IRON, CEMENT HEAD
Rig-Up Completed	12/02/2012 22:30							
Pre-Job Safety Meeting	12/02/2012 22:50							ALL HES PERSONEL AND RIG CREW
Start Job	12/02/2012 23:06							TD-830', OH-13.5", TP-826.8', SJ-44.08', FC-782.72, 9.625", 32.3#, H-40, MUD-9.9PPG, FV-65, PV-10, YP-3, pH-9.5, TEMP-84deg
Other	12/02/2012 23:07		2	2			131.0	FILL LINES
Other	12/02/2012 23:08		0.2	0.2				STALL OUT/PRESSURE HELD AT 1200 PSI
Pressure Test	12/02/2012 23:09		0.2	0.2				ALL LINES HELD PRESSURE AT 2990 PSI
Pump Spacer 1	12/02/2012 23:14		4	20			206.0	FRESH WATER
Pump Tail Cement	12/02/2012 23:21		8	82.7			480.0	220 SKS, 12.8 PPG, 2.11 FT3/ SK, 11.75 GAL/SK, SET UP TIME 1:51 @ 70 BC

Sold To #: 300721

Ship To #: 2965178

Quote #:

Sales Order #: 900019142

SUMMIT Version: 7.3.0045

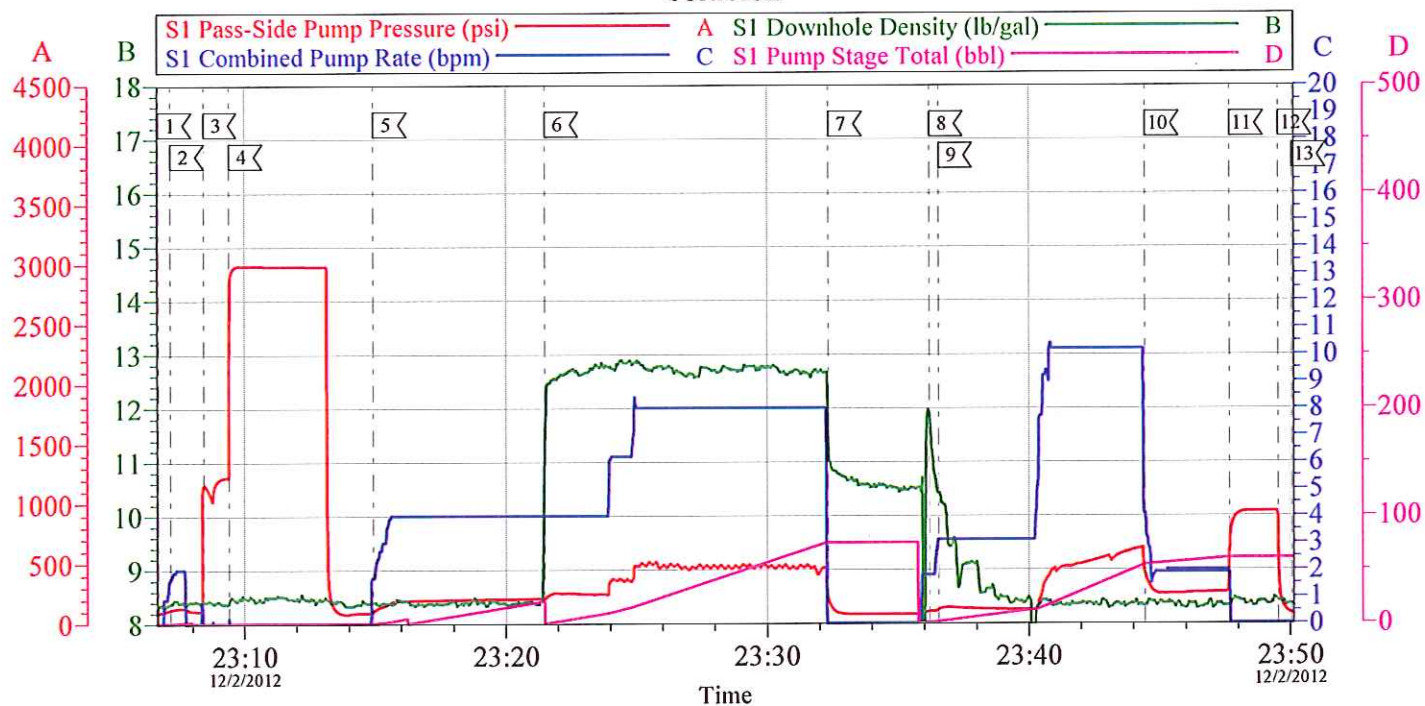
Wednesday, December 12, 2012 02:52:00

Cementing Job Log

Activity Description	Date/Time	Cht #	Rate bbl/ min	Volume bbl		Pressure psig		Comments
				Stage	Total	Tubing	Casing	
Shutdown	12/02/2012 23:32							
Drop Top Plug	12/02/2012 23:36							PLUG DROP VERIFIED BY CUSTOMER
Pump Displacement	12/02/2012 23:36		10	52			658.0	FRESH WATER
Slow Rate	12/02/2012 23:44		2	10			260.0	
Bump Plug	12/02/2012 23:47			62			933.0	CIRCULATED 5 BBLs/14 SKS OF CEMENT TO SURFACE
Check Floats	12/02/2012 23:49							FLOATS HELD
End Job	12/02/2012 23:50							
Post-Job Safety Meeting (Pre Rig-Down)	12/02/2012 23:55							ALL HES PERSONEL
Rig-Down Completed	12/03/2012 00:45							
Depart Location Safety Meeting	12/03/2012 00:50							ALL HES PERSONEL
Crew Leave Location	12/03/2012 01:00							
Other	12/03/2012 01:00							THANK YOU FOR CHOOSING HALLIBURTON, JAVIER CASTILLO AND CREW

WPX GM 41-12

SURFACE



Local Event Log

1 START JOB	23:06:41	2 FILL LINES	23:07:09	3 STALL OUT	23:08:26
4 TEST LINES	23:09:25	5 WATER SPACER	23:14:57	6 CEMENT SLURRY	23:21:30
7 SHUTDOWN	23:32:20	8 DROP PLUG	23:36:12	9 DISPLACEMENT	23:36:33
10 SLOW RATE	23:44:27	11 BUMP PLUG	23:47:40	12 CHECK FLOATS	23:49:32
13 END JOB	23:50:03				

Customer: WPX ENERGY ROCKY MOUNTAIN LLC-EBUS
Well Description: GM 41-12
Company Rep: FRANK MOORE

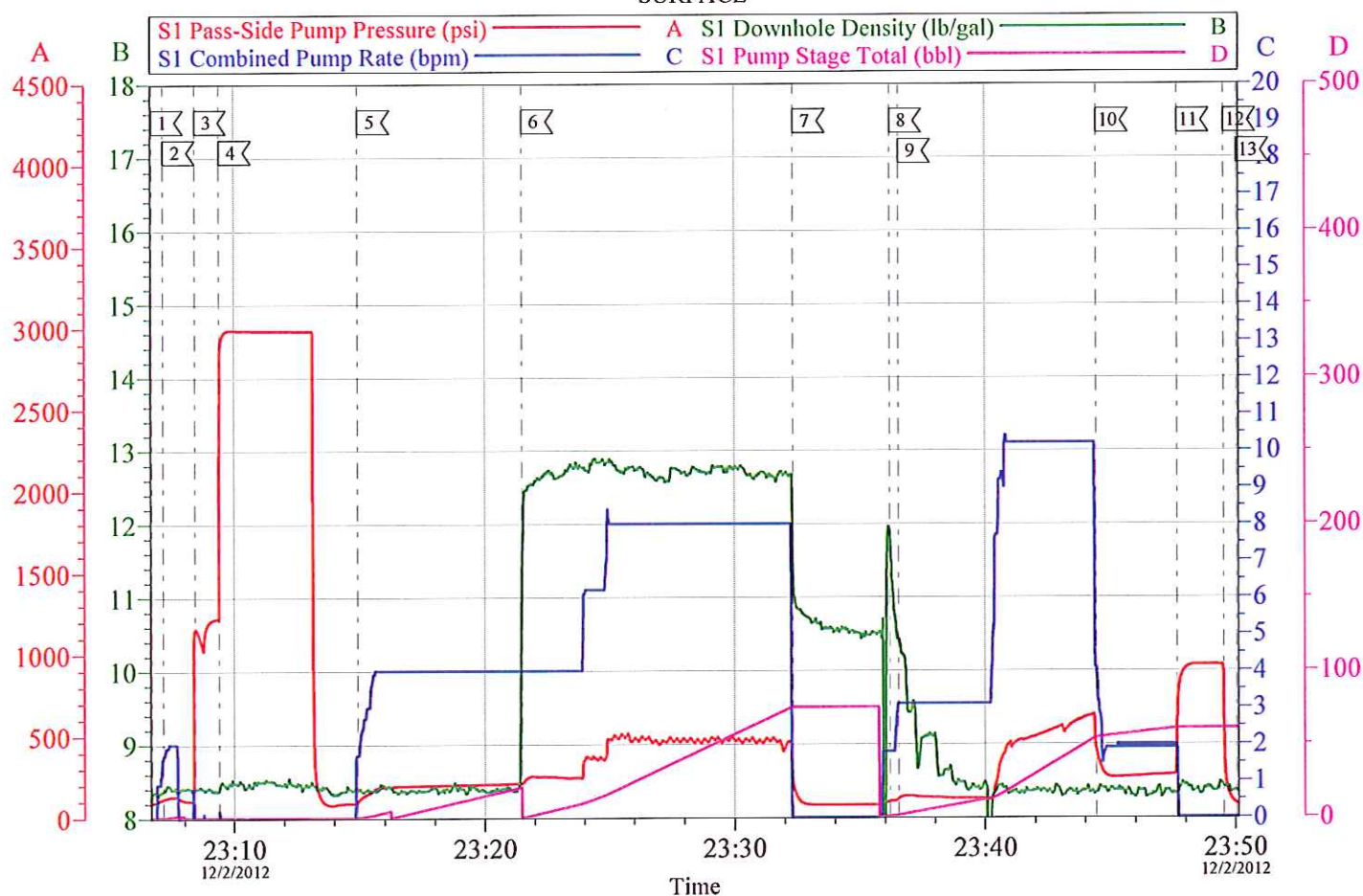
Job Date: 02-Dec-2012
Job Type: SURFACE
Cement Supervisor: JAVIER CASTILLO

Sales Order #: 900019142
ADC Used: YES
Elite #4: CHRIS SMITH

OptiCem v6.4.10
03-Dec-12 00:16

WPX GM 41-12

SURFACE



Customer: WPX ENERGY ROCKY MOUNTAIN LLC-EBUS	Job Date: 02-Dec-2012	Sales Order #: 900019142
Well Description: GM 41-12	Job Type: SURFACE	ADC Used: YES
Company Rep: FRANK MOORE	Cement Supervisor: JAVIER CASTILLO	Elite #4: CHRIS SMITH

OptiCem v6.4.10
03-Dec-12 00:17