

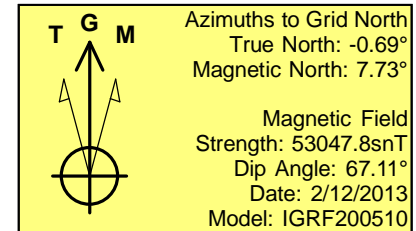
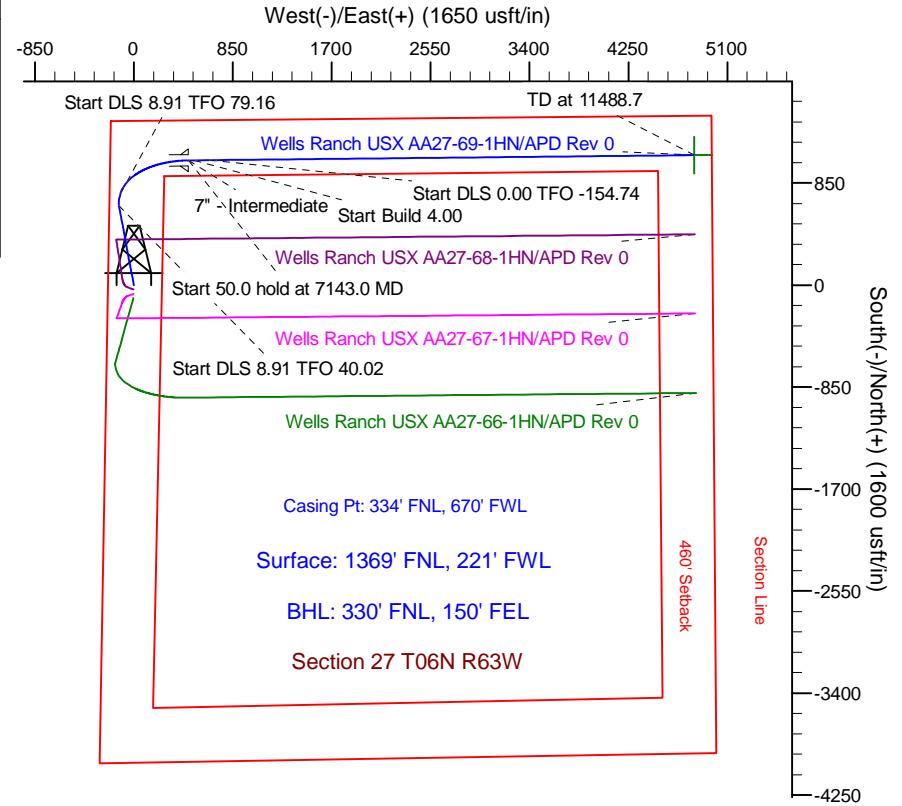
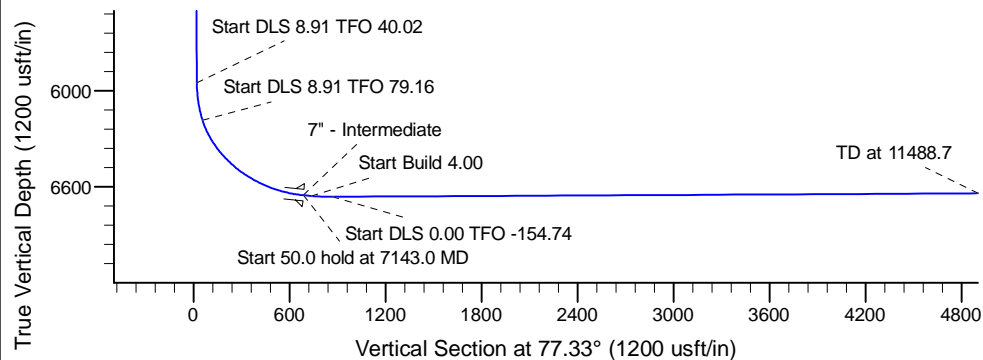
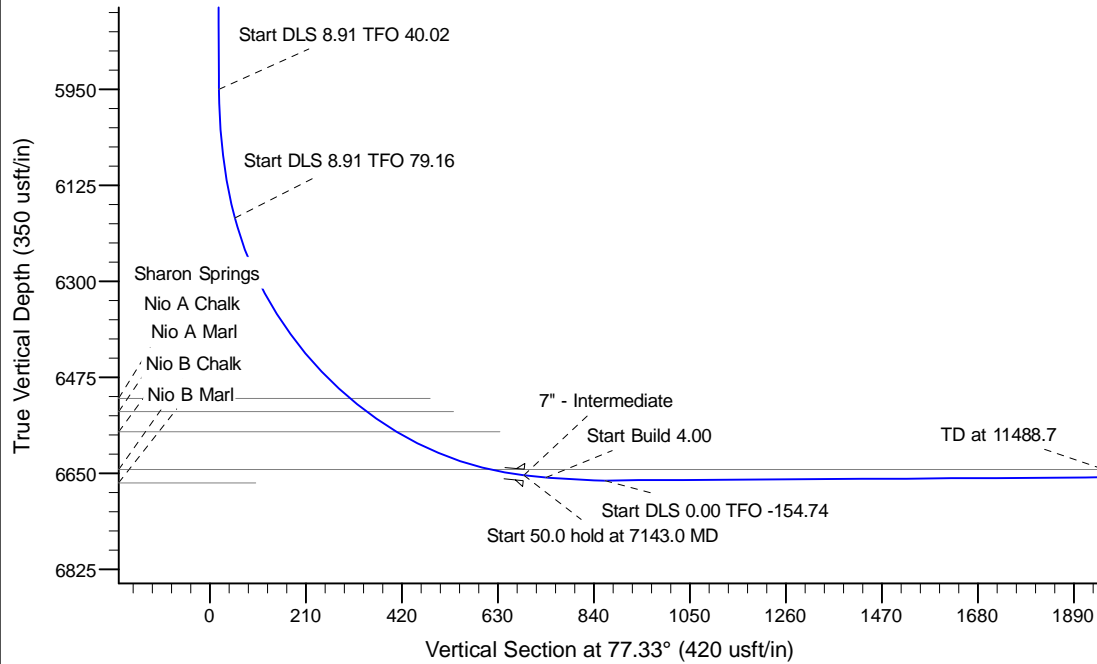
Project: Wattenberg Field
Site: AA (Sec.27-T06N-R63W) Weld County, CO
Well: Wells Ranch USX AA27-69-1HN
Wellbore: Wellbore #1
Design: APD Rev 0

Northern Region Drilling

Geodetic System: US State Plane 1983
Datum: North American Datum 1983
Ellipsoid: GRS 1980
Zone: Colorado Northern Zone
System Datum: Mean Sea Level

SECTION DETAILS

Sec	MD	Inc	Azi	TVD	+N/-S	+E/-W	Dleg	TFace	VSec	Target
1	0.0	0.00	0.00	0.0	0.0	0.0	0.00	0.00	0.0	
2	2700.0	0.00	0.00	2700.0	0.0	0.0	0.00	0.00	0.0	
3	3350.0	13.00	349.00	3344.4	72.1	-14.0	2.00	349.00	2.1	
4	6024.1	13.00	349.00	5950.0	662.6	-128.8	0.00	0.00	19.6	
5	6280.4	33.78	15.67	6184.5	760.8	-114.9	8.91	40.02	54.8	
6	7143.0	85.00	89.43	6653.0	1039.0	470.0	8.91	79.16	686.4	
7	7193.0	85.00	89.43	6657.4	1039.5	519.8	0.00	0.00	735.1	
8	7325.5	90.30	89.43	6662.8	1040.8	652.1	4.00	0.00	864.5	
9	11488.7	90.30	89.43	6641.1	1082.3	4815.1	0.00	-154.74	4935.2	Wells Ranch USX AA27-69-1HN - PBHL



WELL DETAILS: Wells Ranch USX AA27-69-1HN

Ground Level: 4784.0			
Northing	Easting	Latitude	Longitude
0.0	0.0	1412613.96	3297310.09
		40.461110	-104.431510

Plan: APD Rev 0 (Wells Ranch USX AA27-69-1HN/Wellbore #1)

Created By: Shailey Jewell Date: 13:24, February 15 2013
Checked: _____ Date: _____
Reviewed: _____ Date: _____
Approved: _____ Date: _____