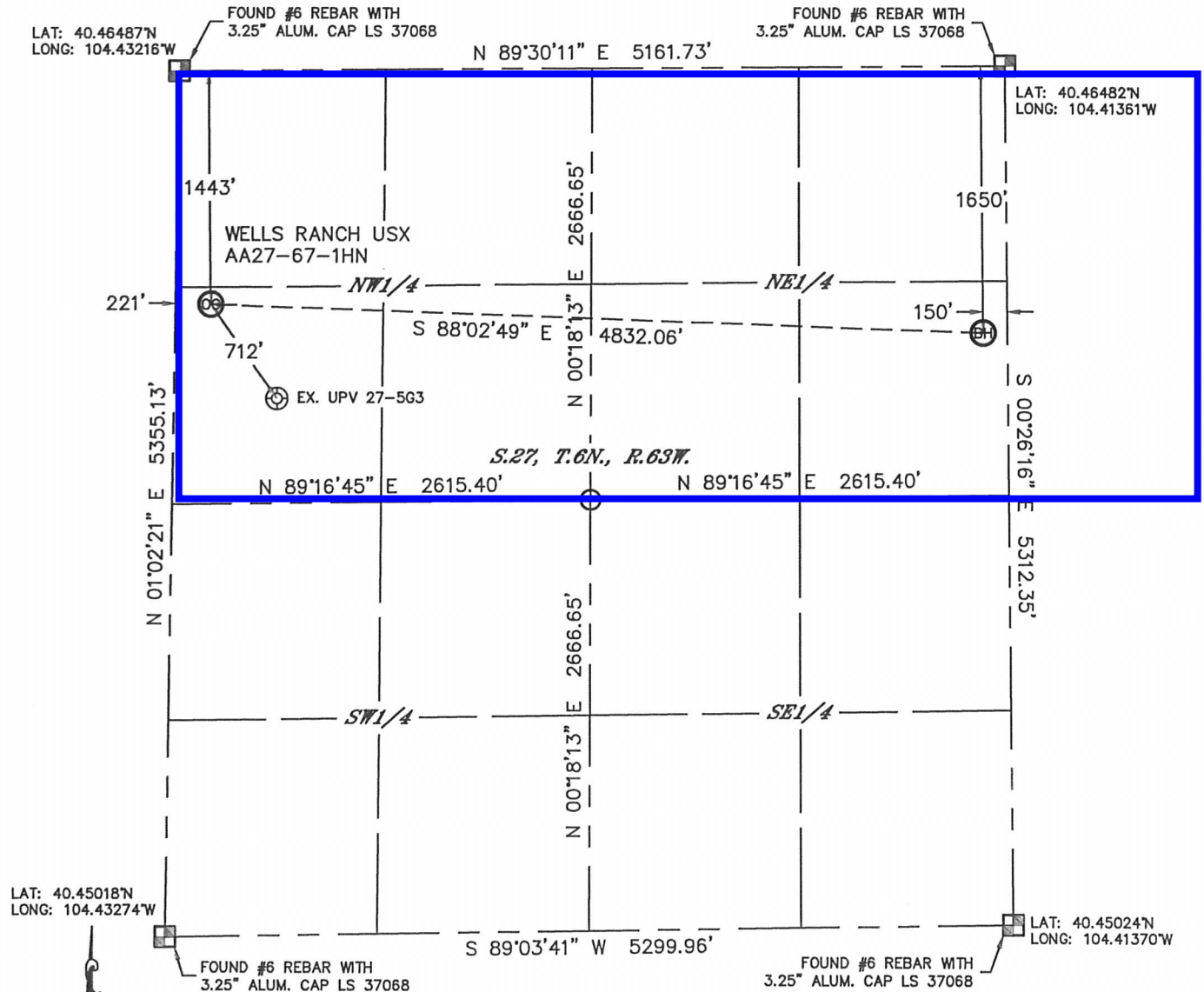


Lat40°, Inc. 1635 Foxtrail Drive, Suite 325 Loveland, CO 970-776-3321

WELL LOCATION CERTIFICATE

THIS MAP DOES NOT REPRESENT A BOUNDARY SURVEY

SECTION: 27
TOWNSHIP: 6N
RANGE: 63W



In accordance with a request from CJ Pietri with Noble Energy Inc. Lat40°, Inc. has determined the surface location of the WELLS RANCH USX AA27-67-1HN to be 1443' from the NORTH line and 221' from the WEST line and the bottom hole to be 1650' from the NORTH line and 150' from the EAST line as measured at right angles from the section lines of Section 27, Township 6 North, Range 63 West of the Sixth Principal Meridian, County of Weld, State of Colorado.

I hereby state that this Well Location Certificate was prepared by me, or under my direct supervision, that the fieldwork was completed on 6/7/2012, for and on behalf of Noble Energy Inc. That this is not a Land Survey Plat or an Improvement Survey Plat, and that it is not to be relied upon for establishment of fence, building, or other future improvement lines.



NOTE:

- 1) Bearings shown are Grid Bearings of the Colorado State Plane Coordinate System, North Zone, North American Datum 1983/2007. The lineal dimensions as contained herein are based upon the "U.S. Survey Foot."
- 2) Ground elevations are based on an observed GPS elevation (NAVD 1988 DATUM).
- 3) NEAREST EXISTING WELL: UPV 27-5G3, 712'
- 4) IMPROVEMENTS: See LOCATION DRAWING for all visible improvements within 400' of disturbed area.
- 5) SURFACE USE: RANGELAND
- 6) INSTRUMENT OPERATOR: ADAM KELLY

NOTE

According to Colorado law, you must commence any legal action based upon any defect in this W.L.C. within three years after you discover such defect. In no event, may any action based upon any defect in this survey be commenced more than ten years after the date of the certificate shown hereon. (13-80-105 C.R.S.)

LEGEND

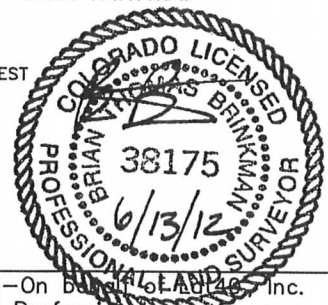
-  = ALIQUOT MONUMENT AS DESCRIBED
-  = CALCULATED POSITION

SURFACE LOCATION

LAT: 40.46091°N
LONG: 104.43152°W
PDOP: 1.4
ELEV: 4783'
1/4, 1/4: SW1/4NW1/4
NEAREST PROPERTY LINE: 221' WEST

BOTTOM HOLE

LAT: 40.46030°N
LONG: 104.41418°W



Brian T. Brinkman—On behalf of Lat40°, Inc.
Colorado Licensed Professional Surveyor No. 38175
DATE: 6/12/2012
PROJECT#: 2012075