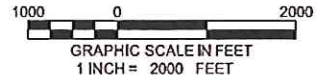
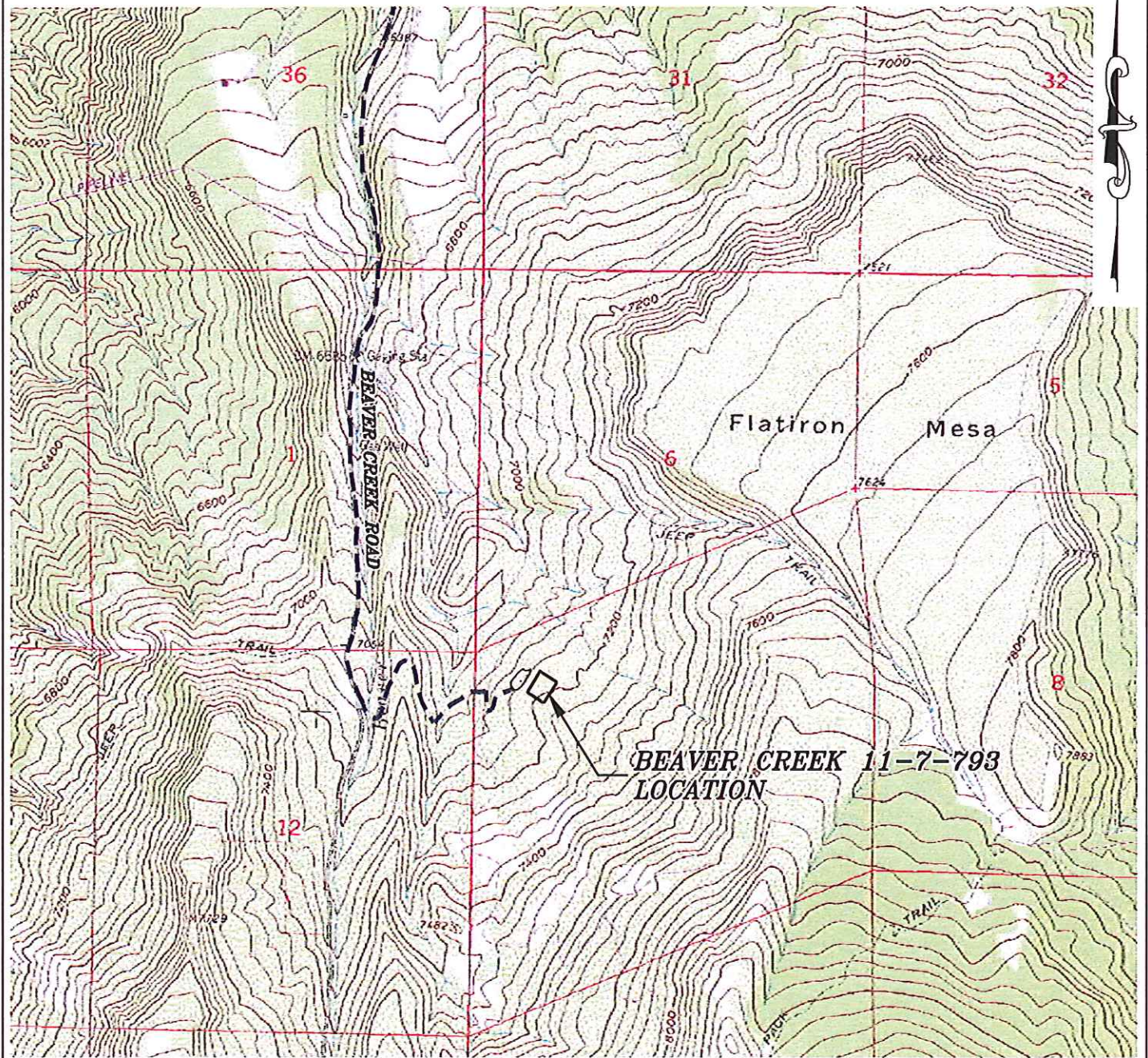


Section 7  
T. 7 S., R 93 W



**ACCESS DESCRIPTION:**

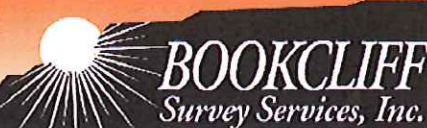
FROM THE INTERSECTION OF STATE HIGHWAY 6 AND COUNTY ROAD 323 (RULISON ROAD) NORTH OF RULISON, PROCEED SOUTHERLY ALONG COUNTY ROAD 323 (RULISON ROAD) ±1.1 MILES TO THE INTERSECTION WITH COUNTY ROAD 309 (RULISON PARACHUTE ROAD), PROCEED LEFT IN AN EASTERLY DIRECTION ±2.3 MILES TO THE INTERSECTION WITH COUNTY ROAD 320 (RIFLE RULISON ROAD), PROCEED RIGHT IN AN EASTERLY DIRECTION ±6.2 MILES TO THE INTERSECTION WITH COUNTY ROAD 317 (BEAVER CREEK ROAD), PROCEED RIGHT IN A SOUTHERLY DIRECTION ±3.6 MILES TO AN INTERSECTION WITH A DIRT/GRAVEL ROAD, PROCEED LEFT IN AN EASTERLY DIRECTION ±0.6 TO AN INTERSECTION WITH A DIRT/GRAVEL ROAD, PROCEED RIGHT IN SOUTHERLY TO NORTHEASTERLY DIRECTION ±0.2 MILES TO THE Beaver Creek 11-7-793 LOCATION, AS SHOWN HEREON.

REVISED: 3/6/13

Construction Plan Prepared for:

**WPXENERGY** WPX Energy Rocky Mountain, LLC

136 East Third Street  
Rifle, Colorado 81650  
Ph. (970) 625-2720  
Fax (970) 625-2773



SCALE: 1" = 2000'  
DATE: 3/6/13  
PLAT: 3 of 4  
PROJECT: Valley  
DFT: cws

Beaver Creek 11-7-793 - Plat 3  
ACCESS ROAD MAP