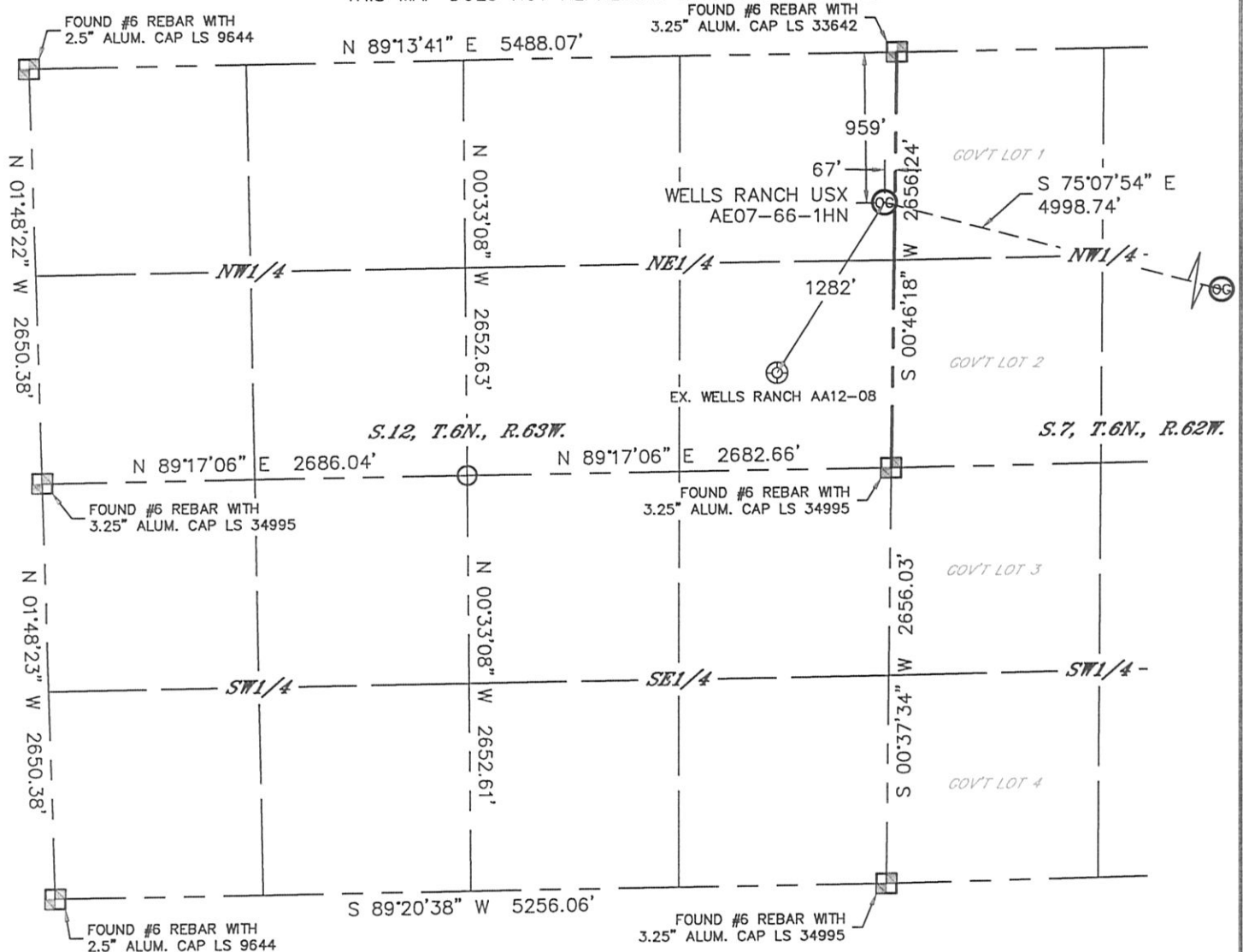


Lat40°, Inc. 1635 Foxtrail Drive, Suite 325 Loveland, CO 970-776-3321

WELL LOCATION CERTIFICATE

SECTION: 12
TOWNSHIP: 6N
RANGE: 63W

THIS MAP DOES NOT REPRESENT A BOUNDARY SURVEY



In accordance with a request from CJ Pietri with Noble Energy Inc. Lat40°, Inc. has determined the surface location of the WELLS RANCH USX AE07-66-1HN to be 959' from the NORTH line and 67' from the EAST line as measured at right angles from the section lines of Section 12, Township 6 North, Range 63 West and the bottom hole to be 2310' from the NORTH line and 535' from the EAST line as measured at right angles from the section lines of Section 7, Township 6 North, Range 62 West of the Sixth Principal Meridian, County of Weld, State of Colorado.

I hereby state that this Well Location Certificate was prepared by me, or under my direct supervision, that the fieldwork was completed on 06/27/12, for and on behalf of Noble Energy Inc. That this is not a Land Survey Plat or an Improvement Survey Plat, and that it is not to be relied upon for establishment of fence, building, or other future improvement lines.

NOTE:

- 1) Bearings shown are Grid Bearings of the Colorado State Plane Coordinate System, North Zone, North American Datum 1983/2007. The lineal dimensions as contained herein are based upon the "U.S. Survey Foot."
- 2) Ground elevations are based on an observed GPS elevation (NAVD 1988 DATUM).
- 3) NEAREST EXISTING WELL: WELLS RANCH AA12-08, 1282'
- 4) IMPROVEMENTS: See LOCATION DRAWING for all visible improvements within 400' of disturbed area.
- 5) SURFACE USE: RANGELAND
- 6) INSTRUMENT OPERATOR: ADAM KELLY

NOTE

According to Colorado law, you must commence any legal action based upon any defect in this W.L.C. within three years after you discover such defect. In no event, may any action based upon any defect in this survey be commenced more than ten years after the date of the certificate shown hereon. (13-80-105 C.R.S.)

LEGEND

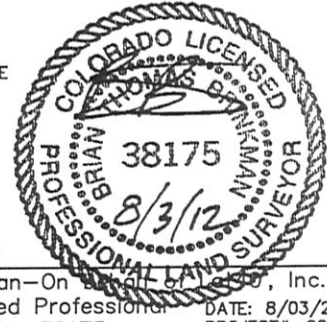
- = ALIQUOT MONUMENT AS DESCRIBED
- = CALCULATED POSITION

SURFACE LOCATION

LAT: 40.50577N
LONG: 104.37516W
PDOP: 1.1
ELEV: 4887'
1/4, 1/4: NE1/4NE1/4
NEAREST PROPERTY LINE: 67' E

BOTTOM HOLE

LAT: 40.50208N
LONG: 104.35785W



SHEET 1 OF 2

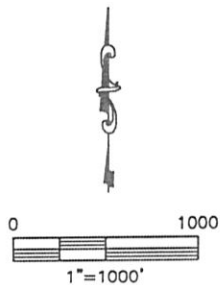
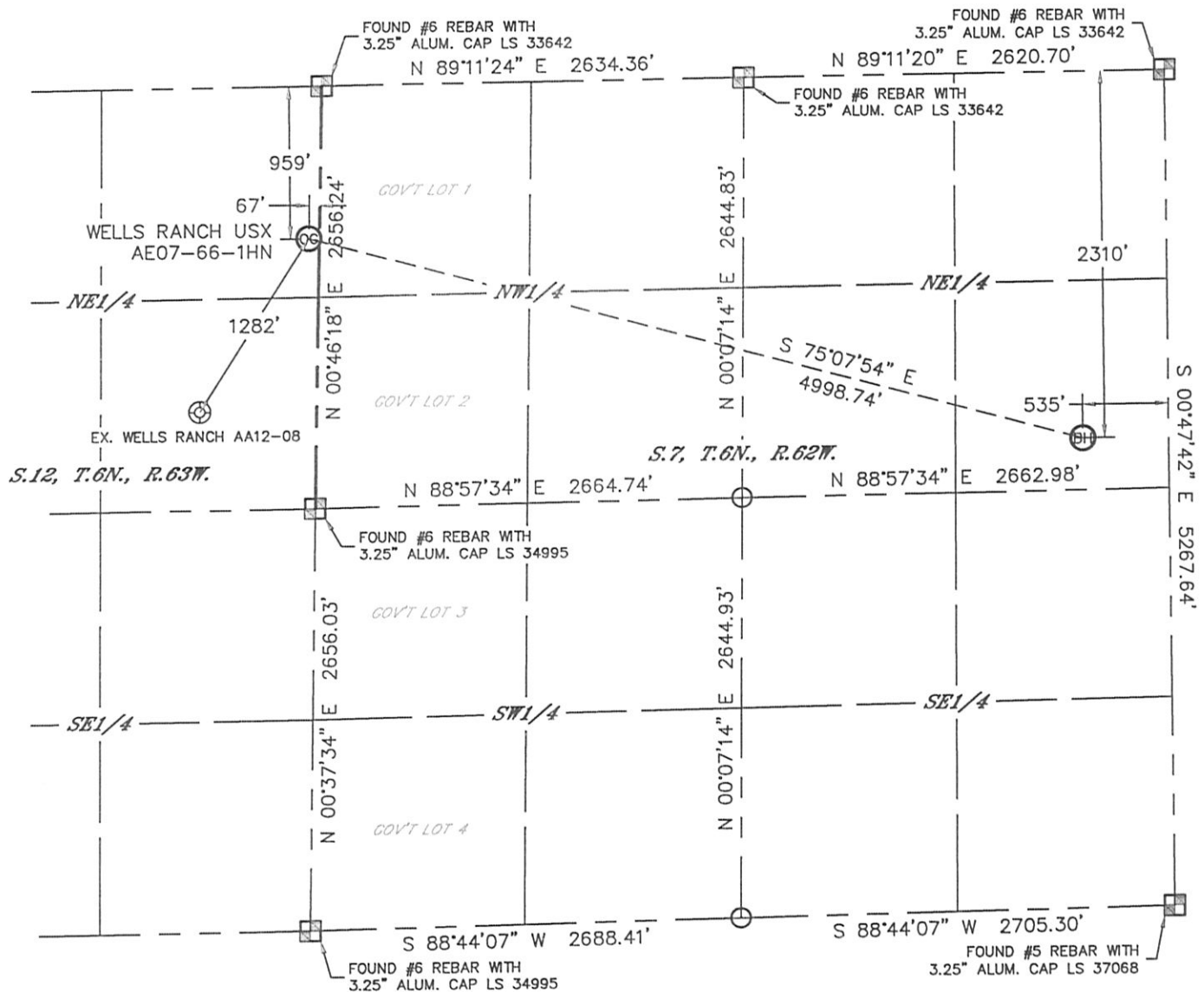
Brian T. Brinkman-On behalf of Lat40°, Inc.
Colorado Licensed Professional
Land Surveyor No. 38175

DATE: 8/03/2012
PROJECT#: 2012094

WELL LOCATION CERTIFICATE

THIS MAP DOES NOT REPRESENT A BOUNDARY SURVEY

SECTION: 12
TOWNSHIP: 6N
RANGE: 63W



NOTE
According to Colorado law, you must commence any legal action based upon any defect in this W.L.C. within three years after you discover such defect. In no event, may any action based upon any defect in this survey be commenced more than ten years after the date of the certificate shown hereon. (13-80-105 C.R.S.)

- LEGEND**
- = ALIQUOT MONUMENT AS DESCRIBED
 - = CALCULATED POSITION



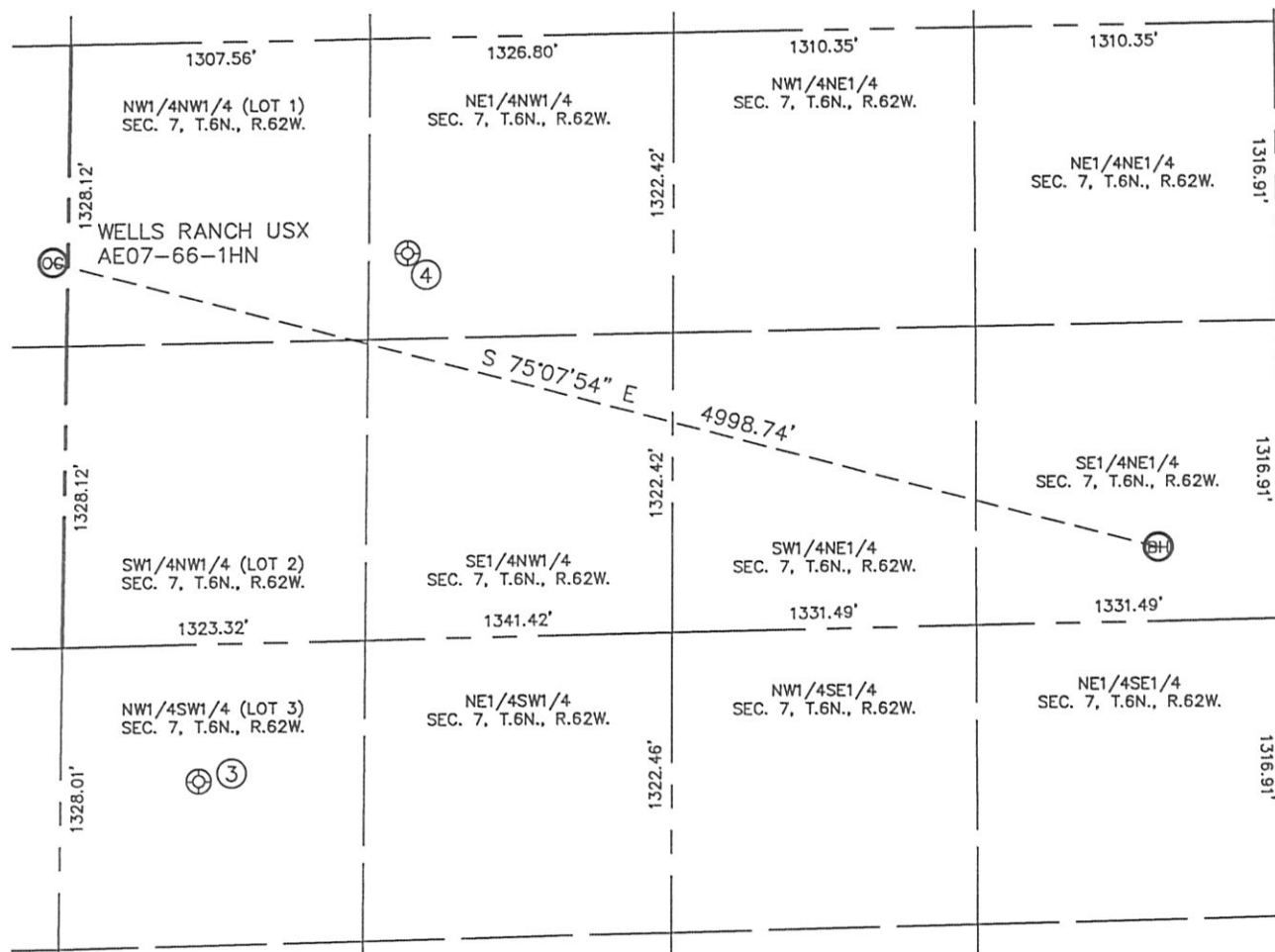
SHEET 2 OF 2

Brian T. Brinkman-On Demand Surveying, Inc.
Colorado Licensed Professional Land Surveyor No. 38175
DATE: 8/03/2012
PROJECT#: 2012094

SITE SKETCH

WELLS RANCH USX AE07-66-1HN

SECTION: 12
TOWNSHIP: 6N
RANGE: 63W

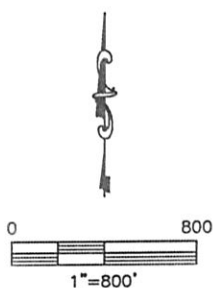


③

WELLS RANCH USX AE7-12
NW1/4SW1/4 (LOT 3)
2051' FSL
603' FWL
LAT-40.49947N
LONG-104.37297W
PDOP:1.3
ELEV: 4872'

④

WELLS RANCH USX
AE07-99HZ
NE1/4NW1/4
950' FNL
1481' FWL
LAT-40.50580N
LONG-104.36959W
PDOP:1.2
ELEV: 4904'



DATE: 8/03/2012
PROJECT#: 2012094