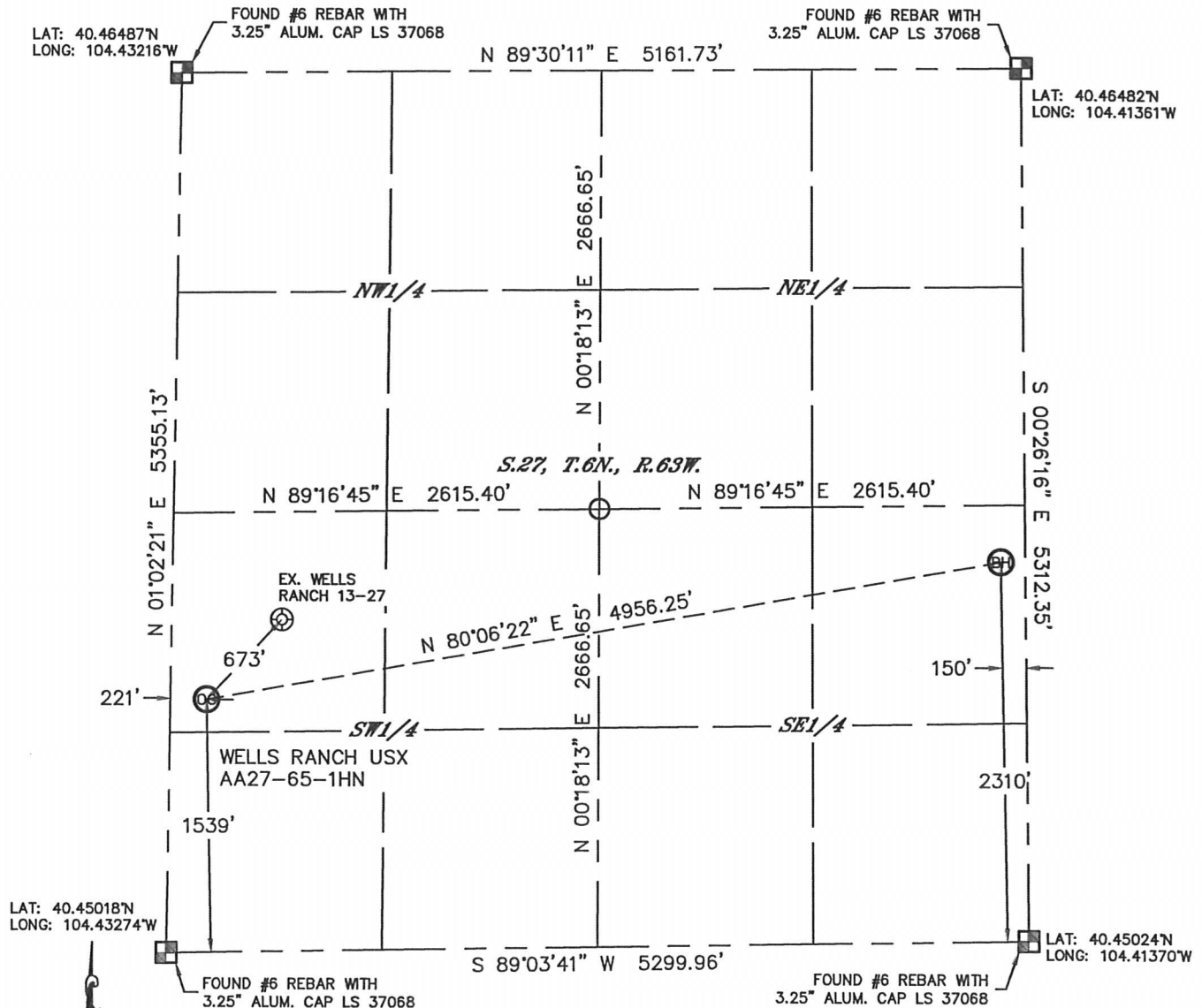


Lat40°, Inc. 1635 Foxtrail Drive, Suite 325 Loveland, CO 970-776-3321

# WELL LOCATION CERTIFICATE

THIS MAP DOES NOT REPRESENT A BOUNDARY SURVEY

SECTION: 27  
TOWNSHIP: 6N  
RANGE: 63W



In accordance with a request from CJ Pietri with Noble Energy Inc., Lat40°, Inc. has determined the surface location of the WELLS RANCH USX AA27-65-1HN to be 1539' from the SOUTH line and 221' from the WEST line and the bottom hole to be 2310' from the SOUTH line and 150' from the EAST line as measured at right angles from the section lines of Section 27, Township 6 North, Range 63 West of the Sixth Principal Meridian, County of Weld, State of Colorado. I hereby state that this Well Location Certificate was prepared by me, or under my direct supervision, that the fieldwork was completed on 6/7/2012, for and on behalf of Noble Energy Inc. That this is not a Land Survey Plat or an Improvement Survey Plat, and that it is not to be relied upon for establishment of fence, building, or other future improvement lines.

## NOTE:

- 1) Bearings shown are Grid Bearings of the Colorado State Plane Coordinate System, North Zone, North American Datum 1983/2007. The lineal dimensions as contained herein are based upon the "U.S. Survey Foot."
- 2) Ground elevations are based on an observed GPS elevation (NAVD 1988 DATUM).
- 3) NEAREST EXISTING WELL: WELLS RANCH 13-27, 673'
- 4) IMPROVEMENTS: See LOCATION DRAWING for all visible improvements within 400' of disturbed area.
- 5) SURFACE USE: RANGELAND
- 6) INSTRUMENT OPERATOR: ADAM KELLY

## NOTE

According to Colorado law, you must commence any legal action based upon any defect in this W.L.C. within three years after you discover such defect. In no event, may any action based upon any defect in this survey be commenced more than ten years after the date of the certificate shown hereon. (13-80-105 C.R.S.)

## LEGEND

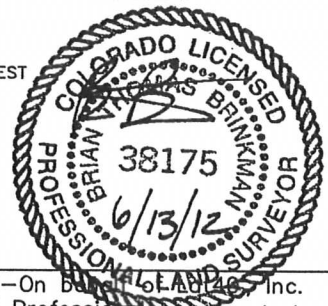
- = ALIQUOT MONUMENT AS DESCRIBED
- = CALCULATED POSITION

## SURFACE LOCATION

LAT: 40.45441°N  
LONG: 104.43178°W  
PDOP: 1.6  
ELEV: 4795'  
1/4, 1/4: NW1/4SW1/4  
NEAREST PROPERTY LINE: 221' WEST

## BOTTOM HOLE

LAT: 40.45658°N  
LONG: 104.41420°W

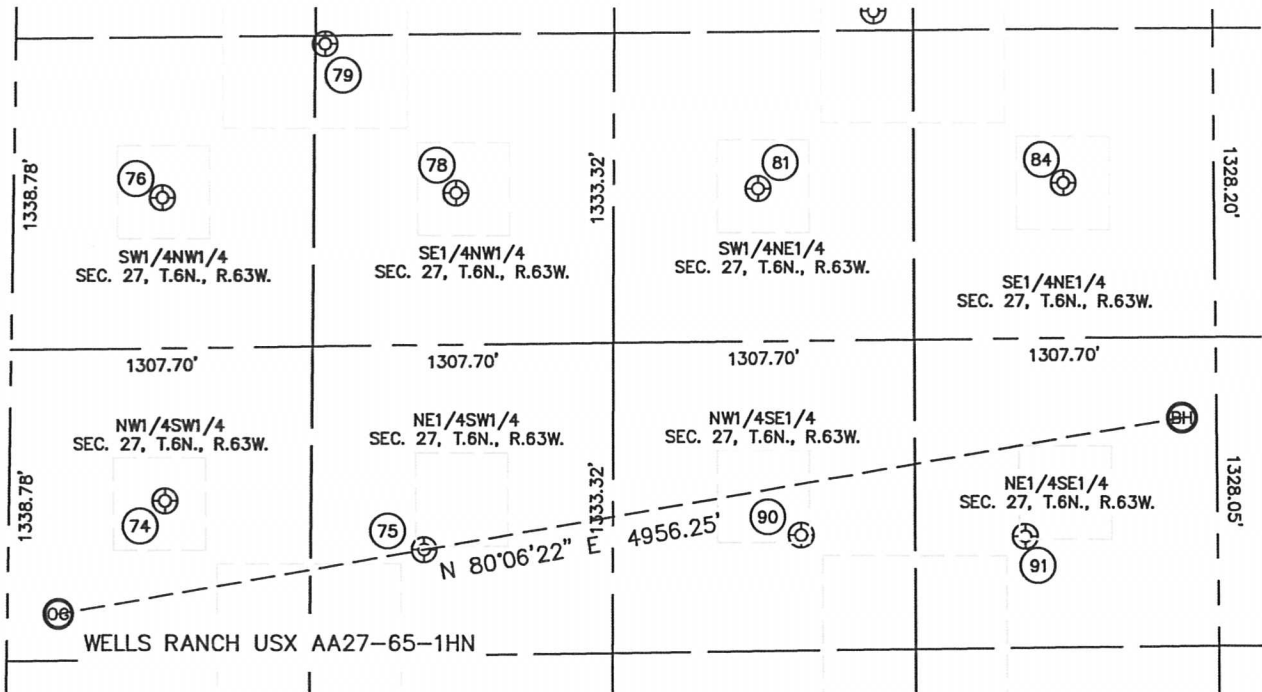


Brian T. Brinkman—On behalf of Lat40°, Inc.  
Colorado Licensed Professional Land Surveyor No. 38175  
DATE: 6/12/2012  
PROJECT#: 2012075

# SITE SKETCH

WELLS RANCH USX AA27-65-1HN

SECTION: 27  
TOWNSHIP: 6N  
RANGE: 63W



(74)  
WELLS RANCH 13-27  
NW1/4SW1/4  
2018' FSL  
676' FWL  
LAT-40.45573N  
LONG-104.43009W  
PDOP: 2.2  
ELEV: 4816'

(75)  
WELLS RANCH 23-27  
NE1/4SW1/4  
1789' FSL  
1805' FWL  
LAT-40.45511N  
LONG-104.42606W  
PDOP: 2.2  
ELEV: 4827'

(76)  
UPV 27-5G3  
SW1/4NW1/4  
2027' FNL  
644' FWL  
LAT-40.45930N  
LONG-104.43006W  
PDOP: 2.1  
ELEV: 4793'

(78)  
WELLS RANCH USX AA27-06  
SE1/4NW1/4  
2017' FNL  
1919' FWL  
LAT-40.45932N  
LONG-104.42548W  
PDOP: 2.0  
ELEV: 4785'

(79)  
WELLS RANCH USX AA27-19  
SE1/4NW1/4  
1371' FNL  
1339' FWL  
LAT-40.46110N  
LONG-104.42750W  
PDOP: 1.9  
ELEV: 4769'

(81)  
WELLS RANCH USX AA27-07  
SW1/4NE1/4  
2008' FNL  
1980' FEL  
LAT-40.45933N  
LONG-104.42076W  
PDOP: 2.1  
ELEV: 4818'

(84)  
WELLS RANCH USX AA27-08  
SE1/4NE1/4  
1992' FNL  
652' FEL  
LAT-40.45936N  
LONG-104.41599W  
PDOP: 2.0  
ELEV: 4820'

(90)  
WELLS RANCH 33-27  
NW1/4SE1/4  
1829' FSL  
1809' FEL  
LAT-40.45524N  
LONG-104.42017W  
PDOP: 1.6  
ELEV: 4823'

(91)  
WELLS RANCH 43-27  
NE1/4SE1/4  
1809' FSL  
834' FEL  
LAT-40.45520N  
LONG-104.41667W  
PDOP: 1.6  
ELEV: 4838'

