

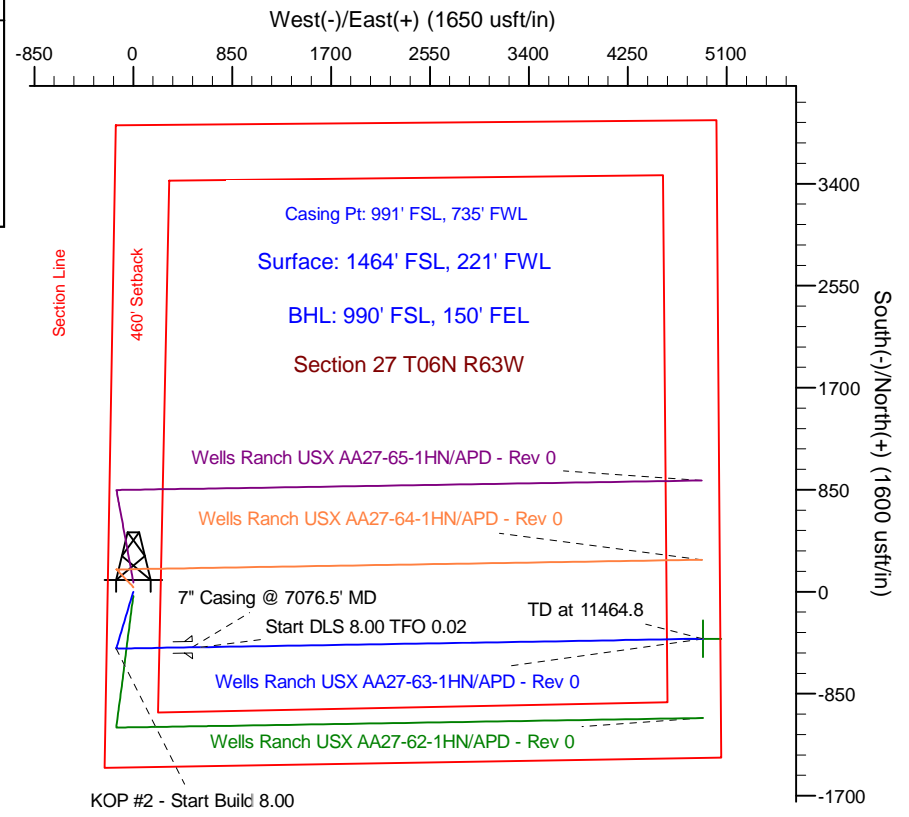
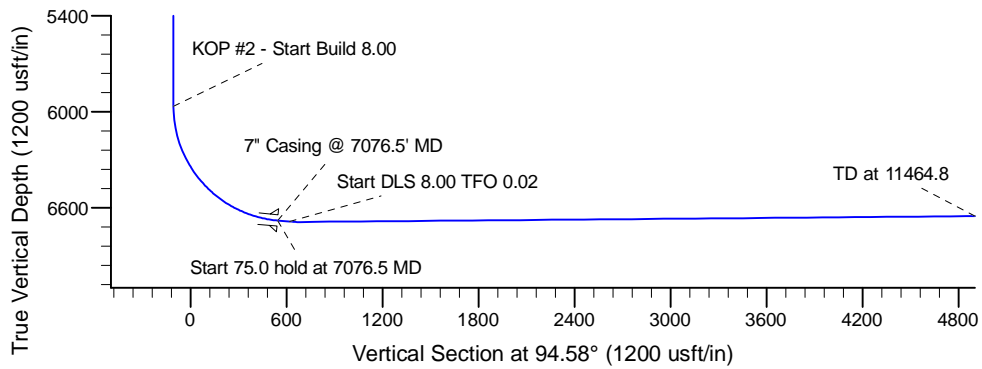
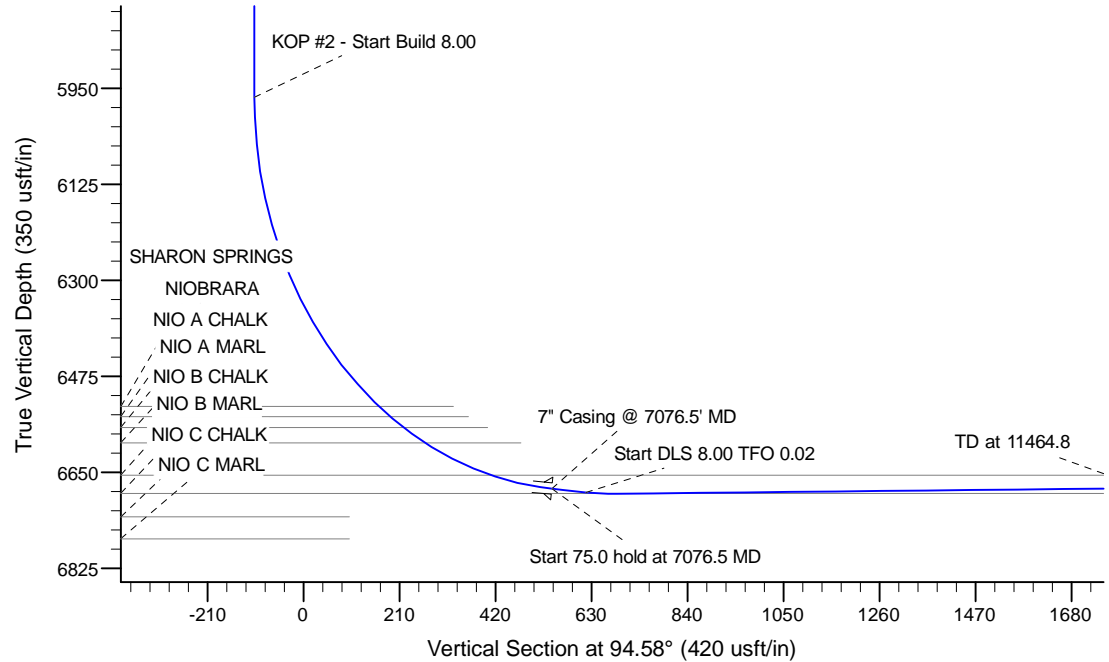
Project: Wattenberg Field
 Site: AA (Sec.27-T06N-R63W) Weld County, CO
 Well: Wells Ranch USX AA27-63-1HN
 Wellbore: Original Drilling
 Design: APD - Rev 0

Northern Region Drilling

Geodetic System: US State Plane 1983
 Datum: North American Datum 1983
 Ellipsoid: GRS 1980
 Zone: Colorado Northern Zone
 System Datum: Mean Sea Level

SECTION DETAILS

Sec	MD	Inc	Azi	TVD	+N/-S	+E/-W	Dleg	TFace	V Sect	Target
1	0.0	0.00	0.00	0.0	0.0	0.0	0.00	0.00	0.0	
2	1500.0	0.00	0.00	1500.0	0.0	0.0	0.00	0.00	0.0	
3	2100.2	12.00	197.12	2095.8	-59.9	-18.4	2.00	197.12	-13.6	
4	3882.5	12.00	197.12	3839.2	-414.1	-127.6	0.00	0.00	-94.1	
5	4482.7	0.00	0.00	4435.0	-474.0	-146.0	2.00	180.00	-107.7	
6	6014.0	0.00	0.00	5966.3	-474.0	-146.0	0.00	0.00	-107.7	
7	7076.5	85.00	89.07	6679.7	-463.4	507.7	8.00	89.07	543.1	
8	7151.5	85.00	89.07	6686.3	-462.2	582.4	0.00	0.00	617.5	
9	7220.2	90.50	89.07	6689.0	-461.1	651.0	8.00	0.02	685.8	
10	11464.8	90.50	89.07	6652.1	-392.3	4894.9	0.00	0.00	4910.6	Wells Ranch USX AA27-63-1HN BHL 990'FSL, 150'FEL



T G M

Azimuths to Grid North
 True North: -0.69°
 Magnetic North: 7.73°

Magnetic Field
 Strength: 53045.2snT
 Dip Angle: 67.10°
 Date: 2/8/2013
 Model: IGRF200510

WELL DETAILS: Wells Ranch USX AA27-63-1HN			
Ground Level: 4794.0			
0.0	0.0	1410095.88	3297262.50
		Latitude	Longitude
		40.454200	-104.431790
Plan: APD - Rev 0 (Wells Ranch USX AA27-63-1HN/Original Drilling)			
Created By: Shailey Jewell		Date: 14:07, February 13 2013	
Checked: _____	Date: _____		
Reviewed: _____	Date: _____		
Approved: _____	Date: _____		