

Sonic Bond Log Gamma-Ray CCL

Company	KERR-McGEE OIL & GAS ONSHORE LP		
Well	DECHANT 15-36		
Field	WATTENBERG		
County	WELD	State	COLORADO
Location:	API #:		Other Services
Permanent Datum	GL	Elevation	4823
Log Measured From	KB 16'	Elevation	K.B. 4838
Drilling Measured From	KB	Elevation	D.F. 4837
		Elevation	G.L. 4823
Date	03-10-2009		
Run Number	ONE		
Depth Driller	7268		
Depth Logger	7177		
Bottom Logged Interval	7172		
Top Log Interval	2800		
Open Hole Size	7 7/8"		
Type Fluid	KCI WATER		
Density / Viscosity	N/A		
Max. Recorded Temp.	245		
Estimated Cement Top	3050		
Time Well Ready			
Time Logger on Bottom			
Equipment Number	4		
Location	GREELEY		
Recorded By	T. GORDON		
Witnessed By	L. CAMP		
Borehole Record		Tubing Record	
Run Number	Bit	From	To
ONE	12 1/4"	0	774
TWO	7 7/8"	774	7268
Casing Record	Size	Wgt/Ft	Top
Surface String	8 5/8"	24#	0
Prot. String			
Production String	4 1/2"	11.6#	0
Liner			T.D.

<<< Fold Here >>>

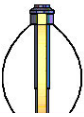
All interpretations are opinions based on inferences from electrical or other measurements and we cannot and do not guarantee the accuracy or correctness of any interpretation, and we shall not, except in the case of gross or willful negligence on our part, be liable or responsible for any loss, costs, damages, or expenses incurred or sustained by anyone resulting from any interpretation made by any of our officers, agents or employees. These interpretations are also subject to our general terms and conditions set out in our current Price Schedule.

Comments

API #- 05-123-29712-00

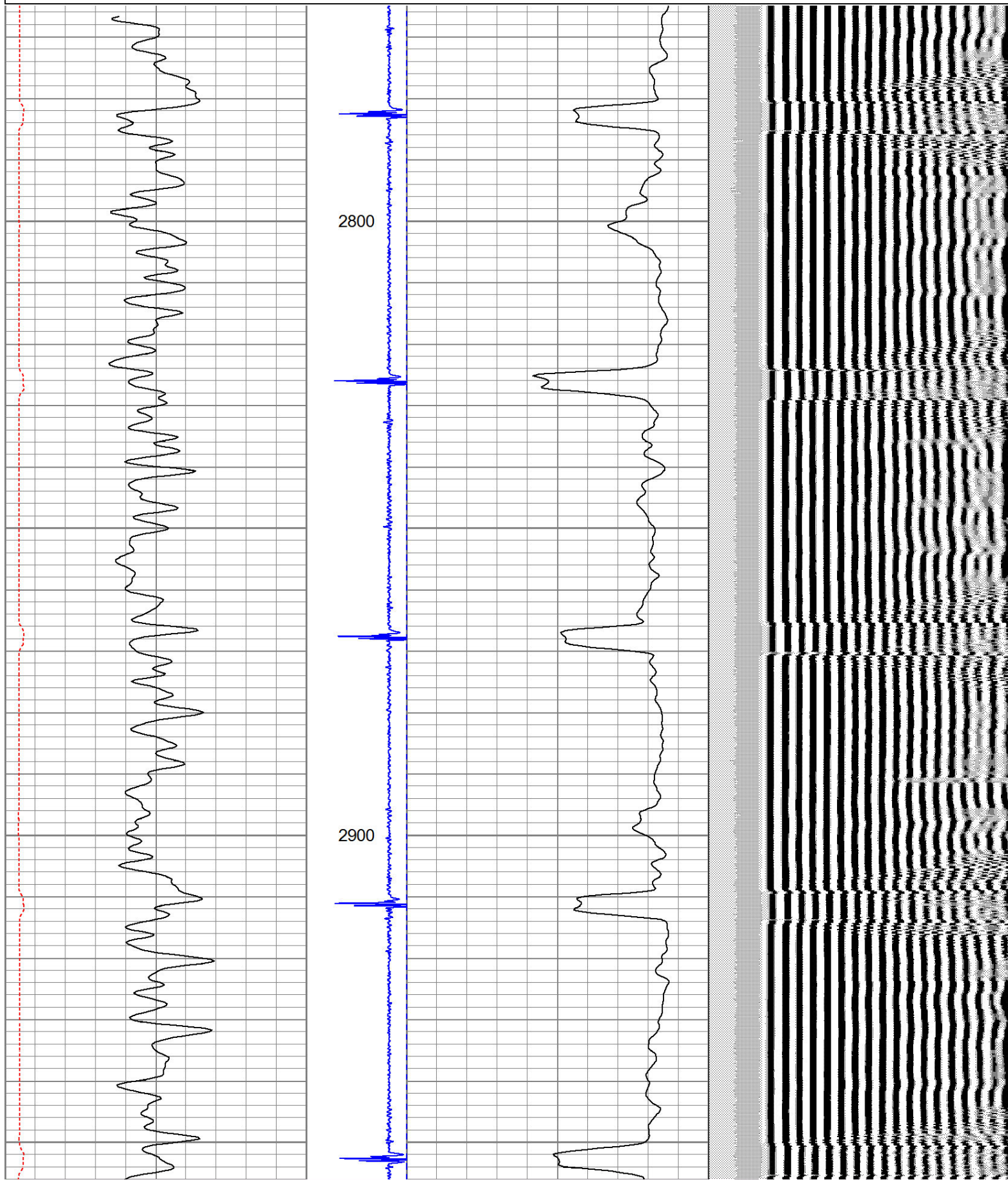
CORRECTED DOWN HOLE 5 FEET TO CORRELATE TO SCHLUMBERGER LOG.

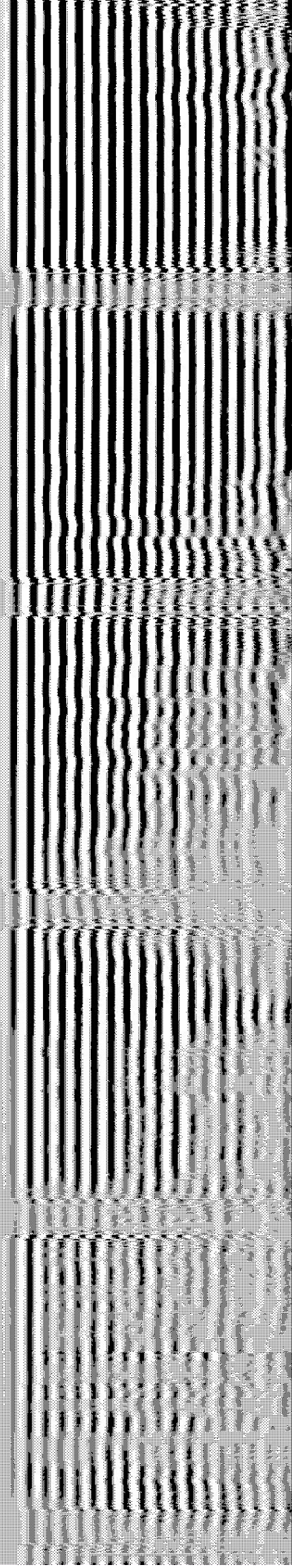
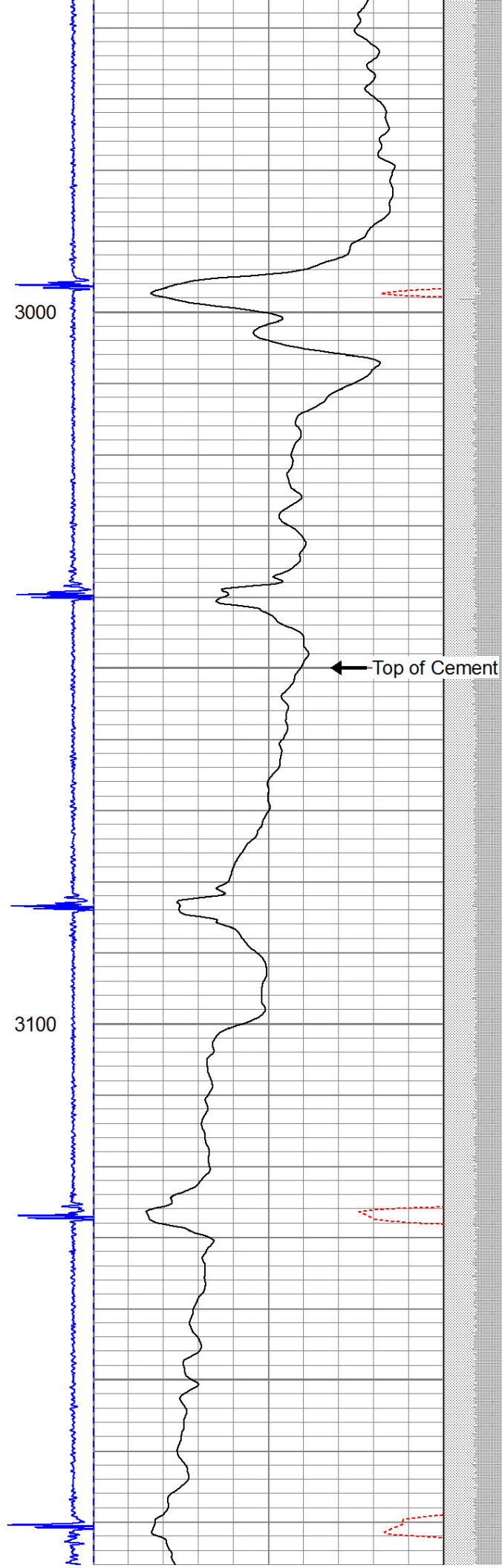
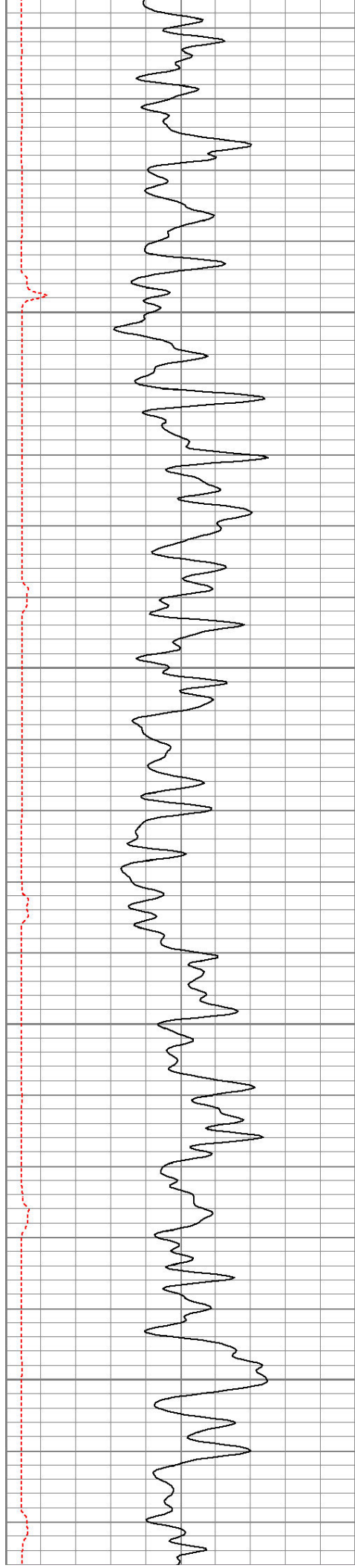
THANK YOU FOR USING I.P.S.

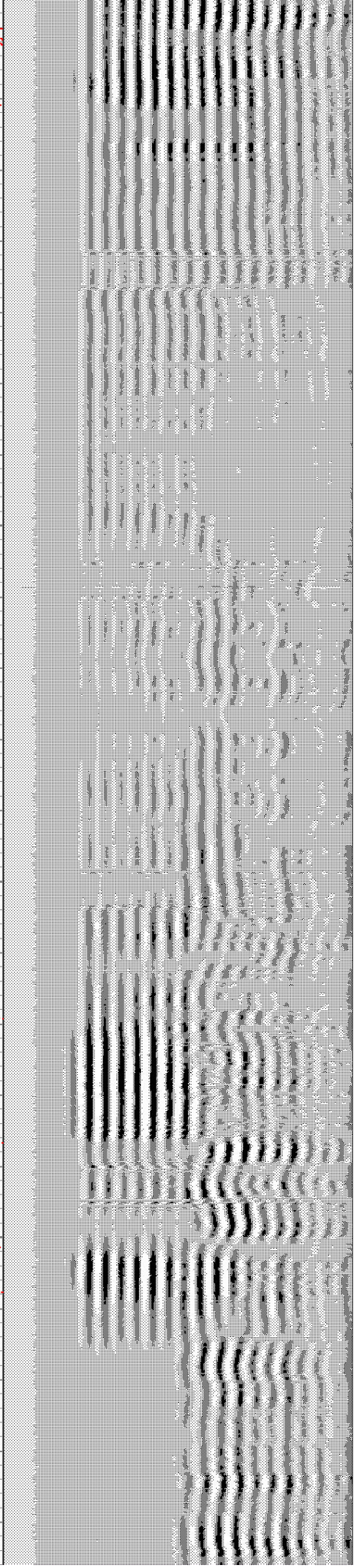
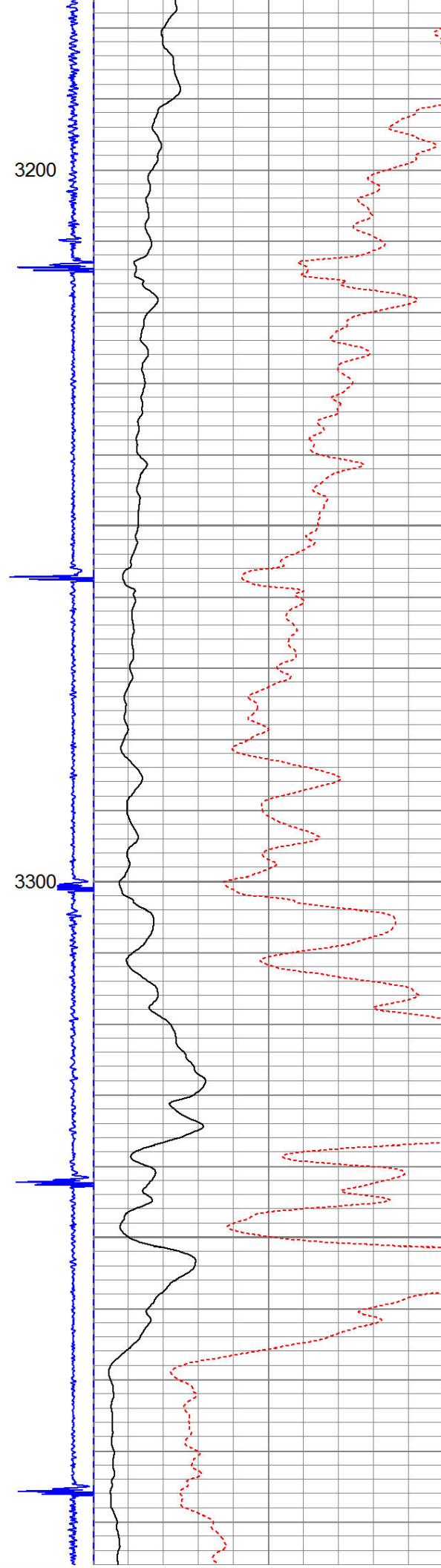
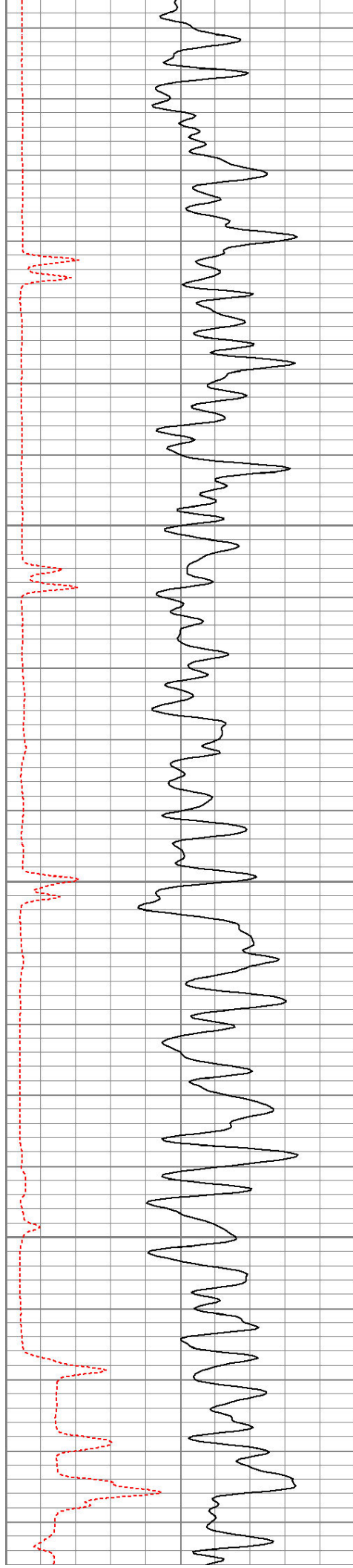
Sensor	Offset (ft)	Schematic	Description	Len (ft)	OD (in)	Wt (lb)
			CENT-Probe (PT MONO2)	1.75	2.75	35.00

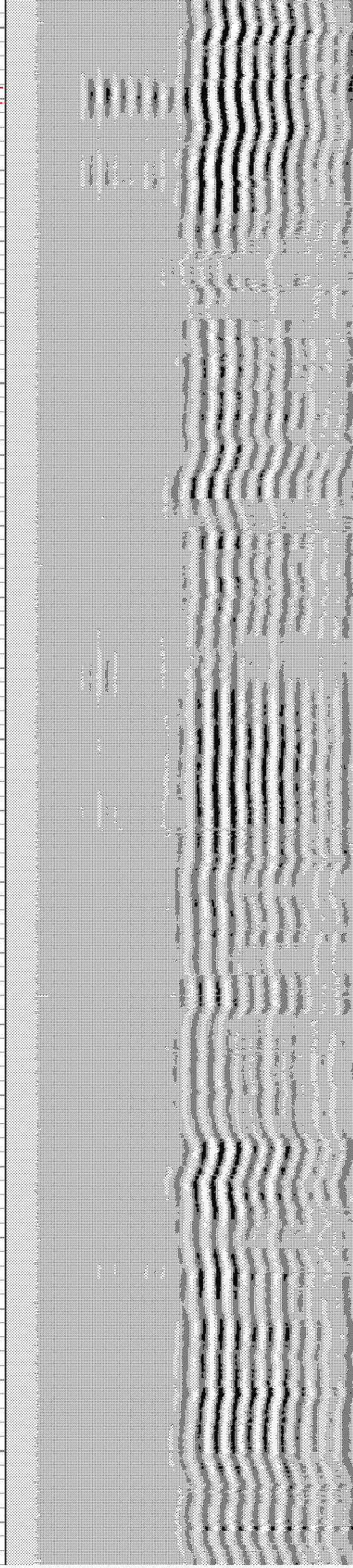
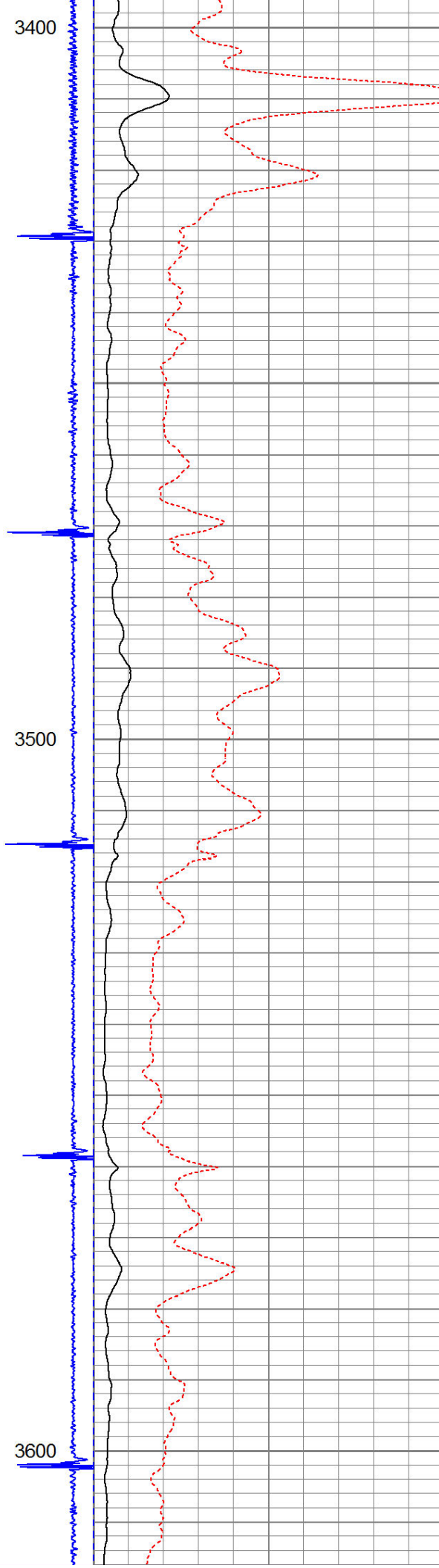
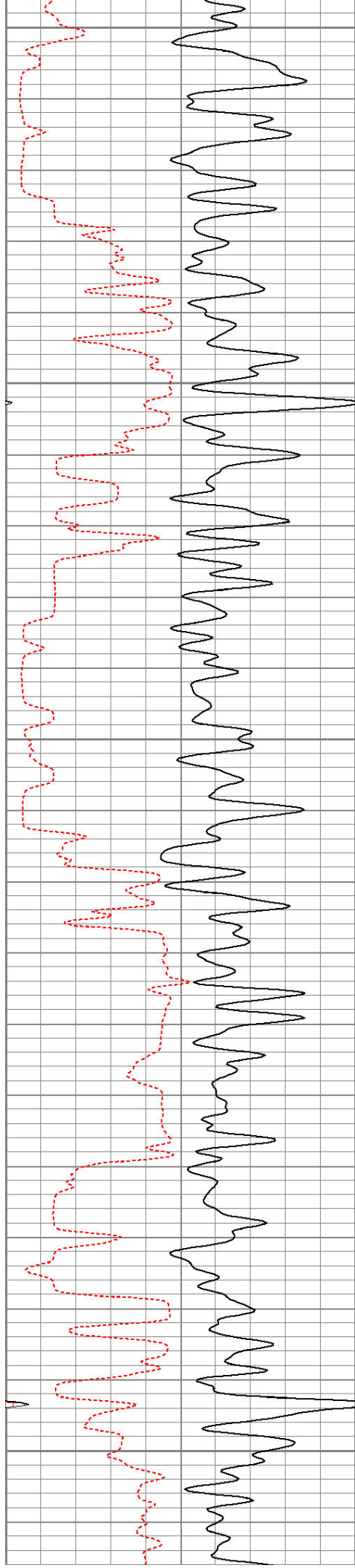
Database File:	dechant 15-36.db
Dataset Pathname:	pass3
Presentation Format:	cbl4

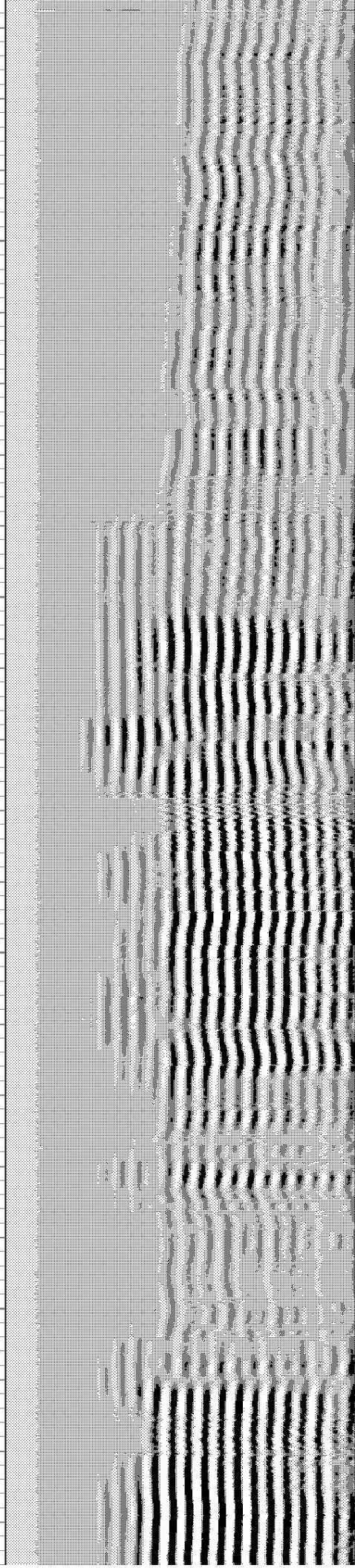
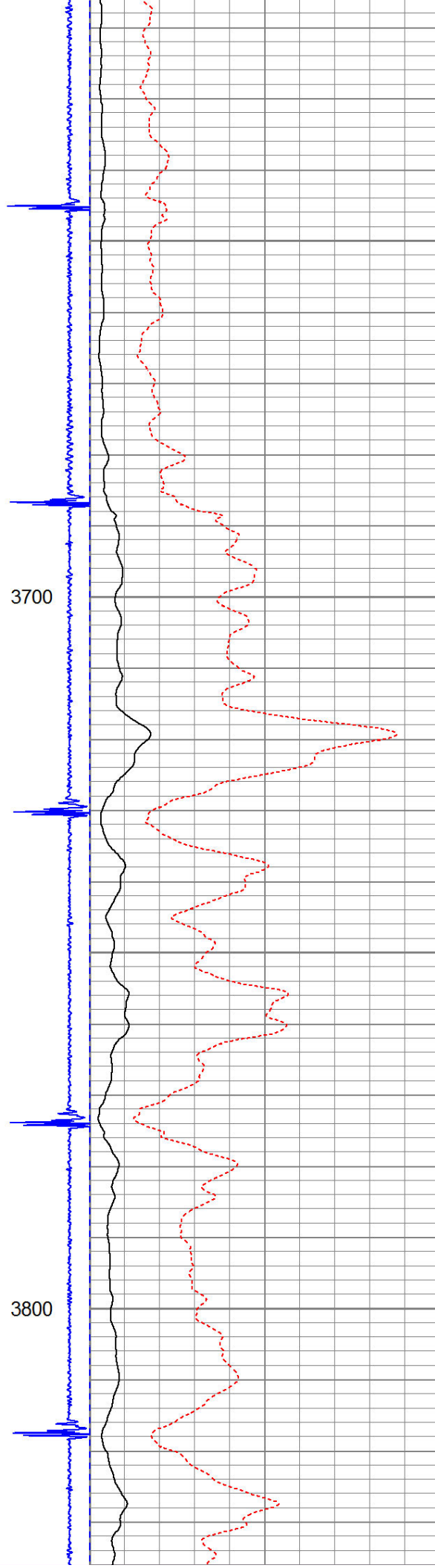
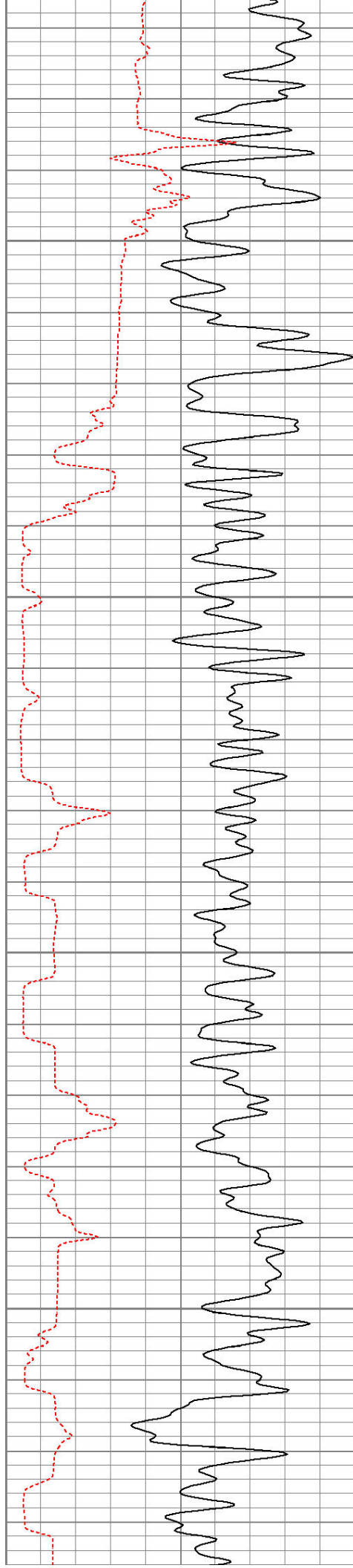
0	Gamma Ray (GAPI)	200	Collar Locator	0	Amplified Amplitude (mV)	20	200	Variable Density	1200
280	TT3 (usec)	800	5	-1	0	Amplitude (mV)	100		
200	gr (GAPI)	400			0	Line Tension (lb)	2000		

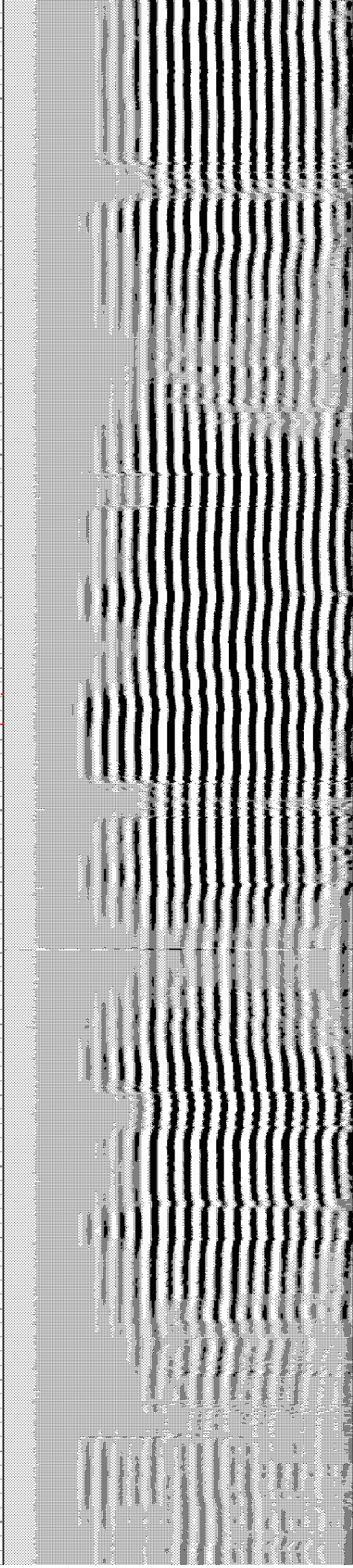
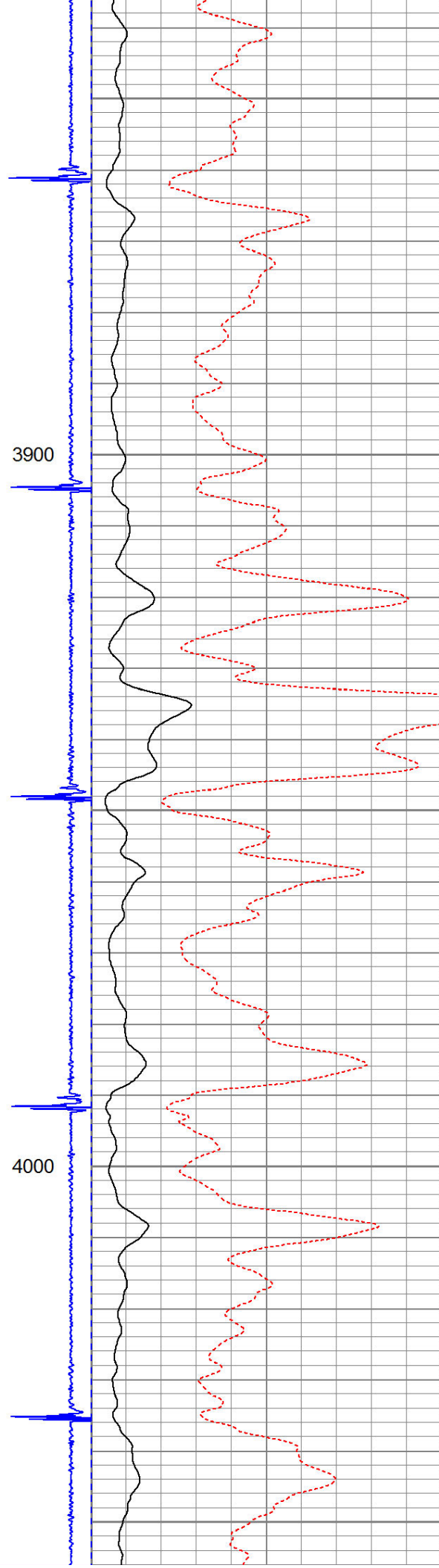
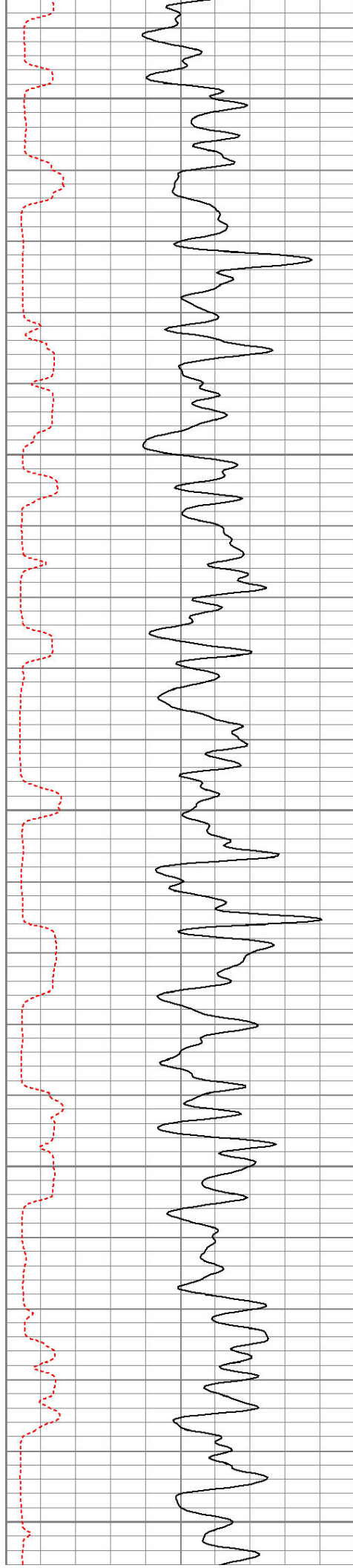


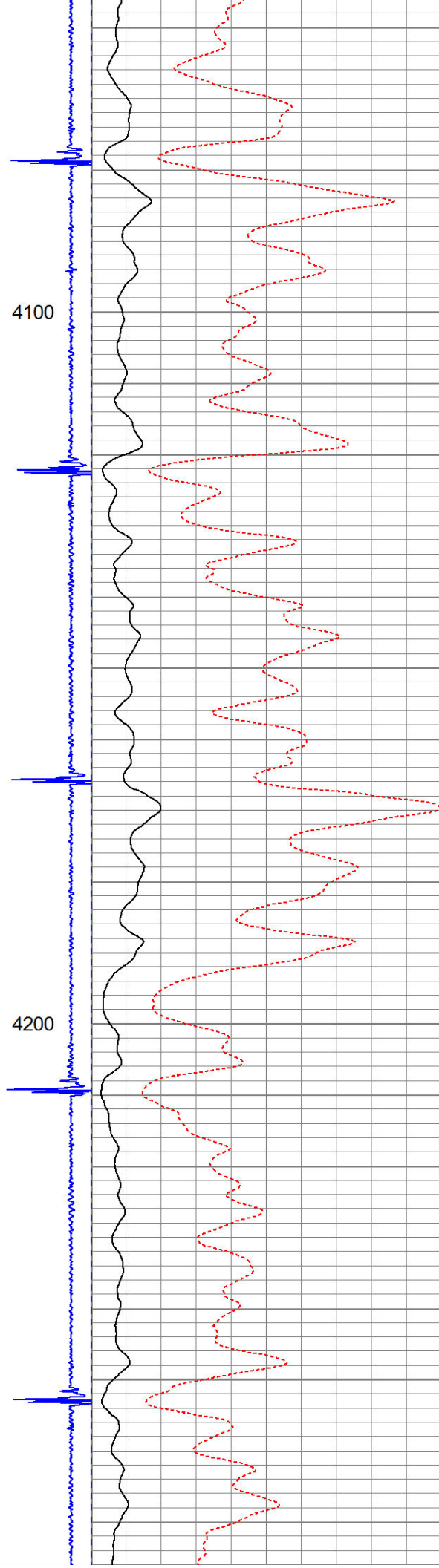
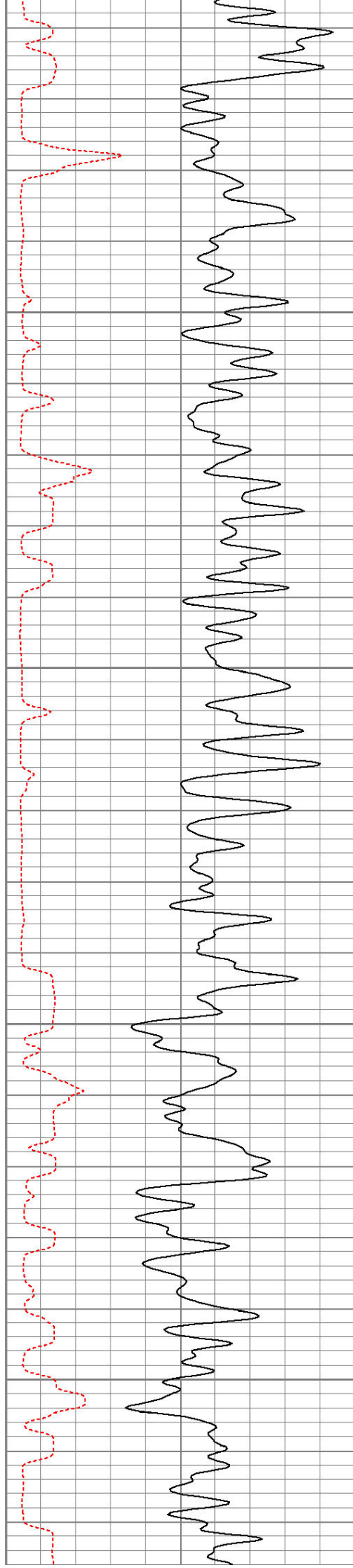


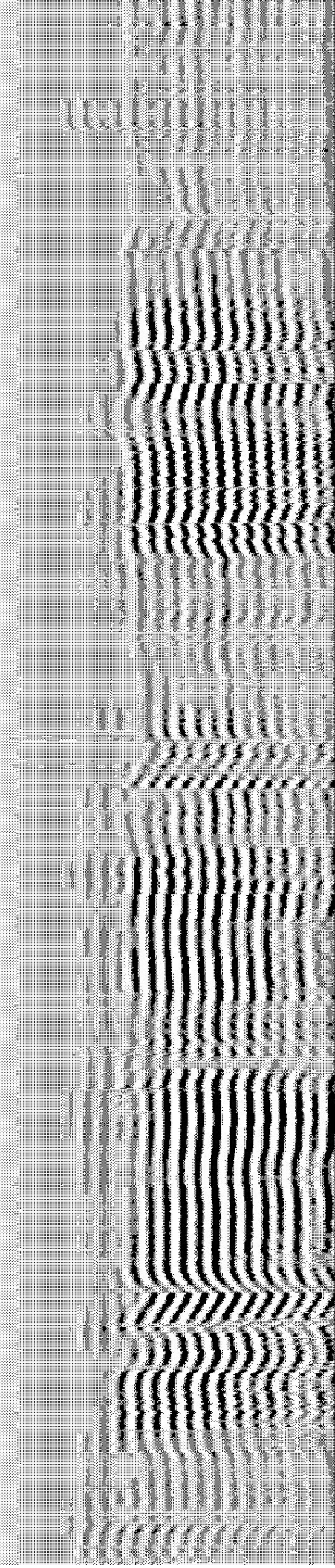
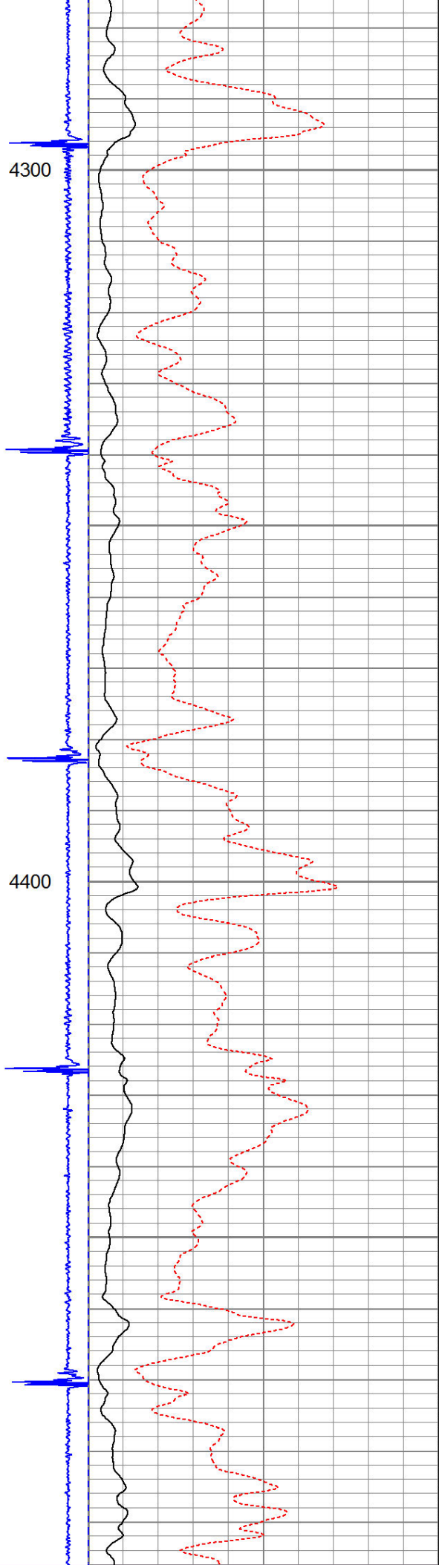
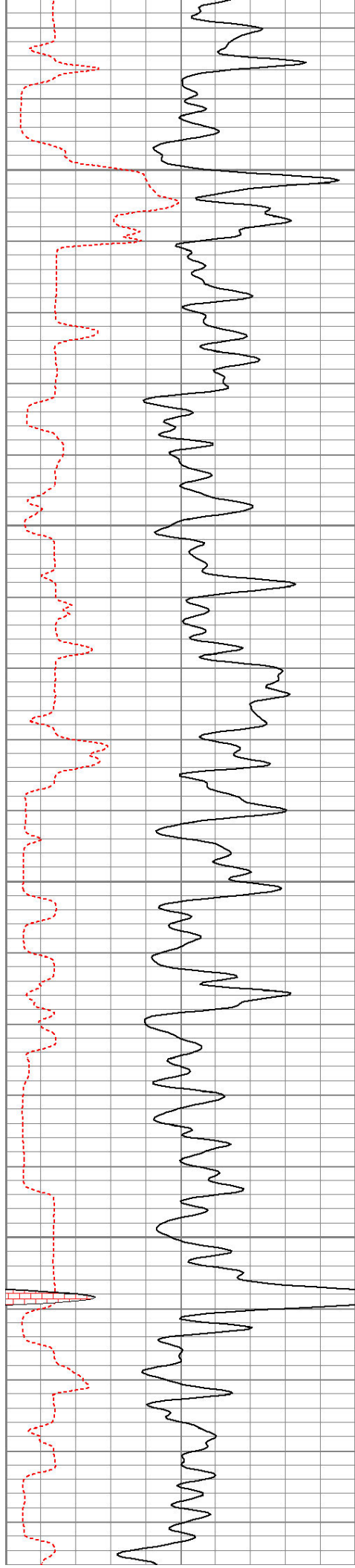


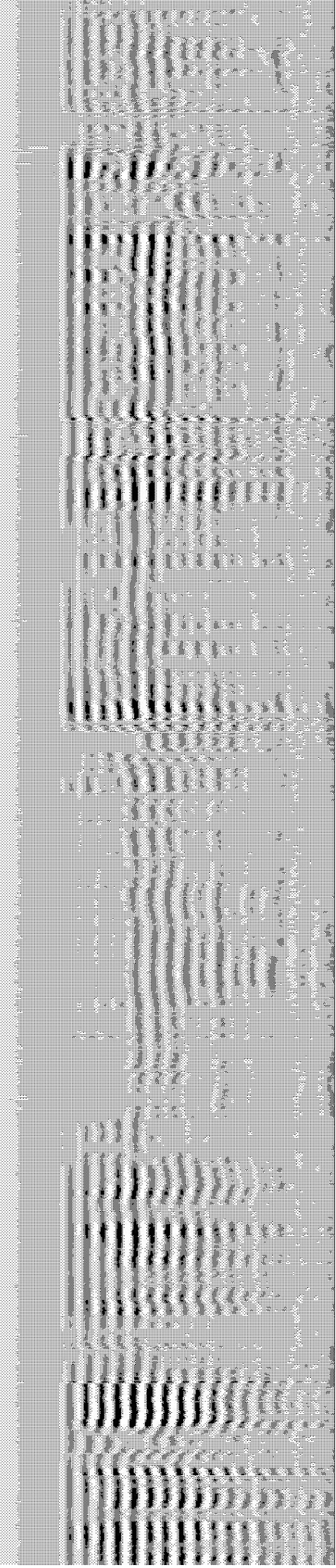
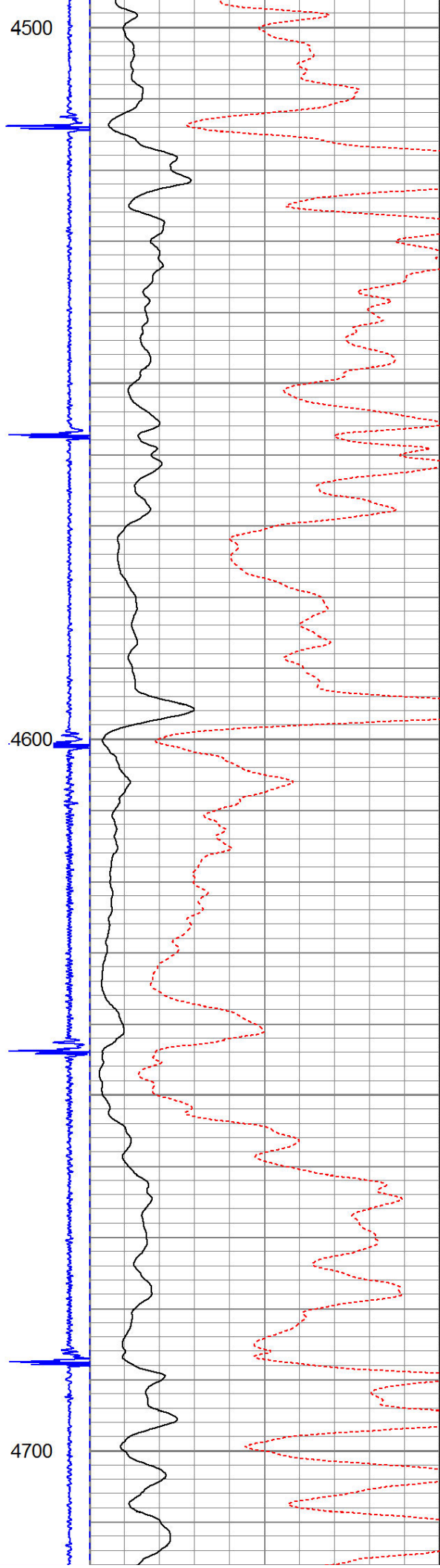
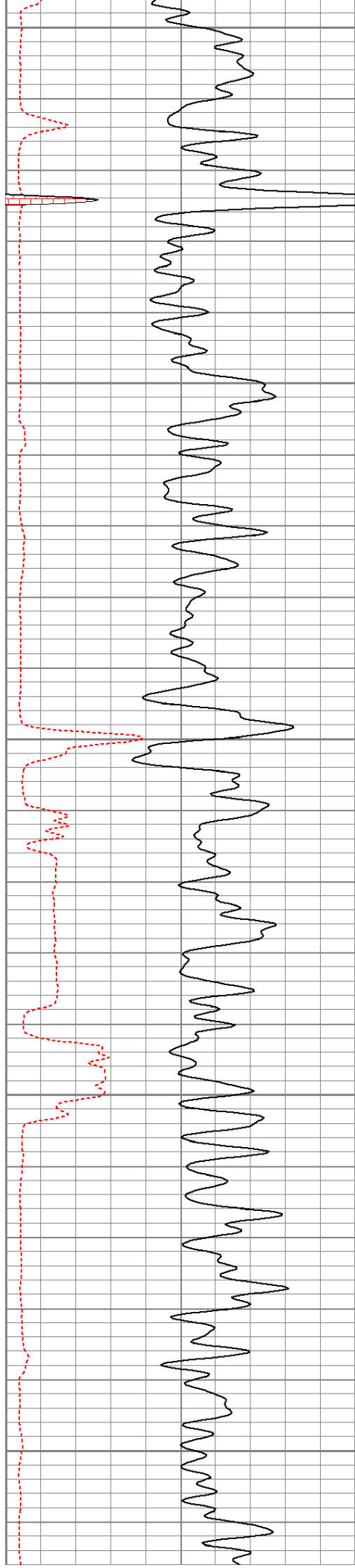


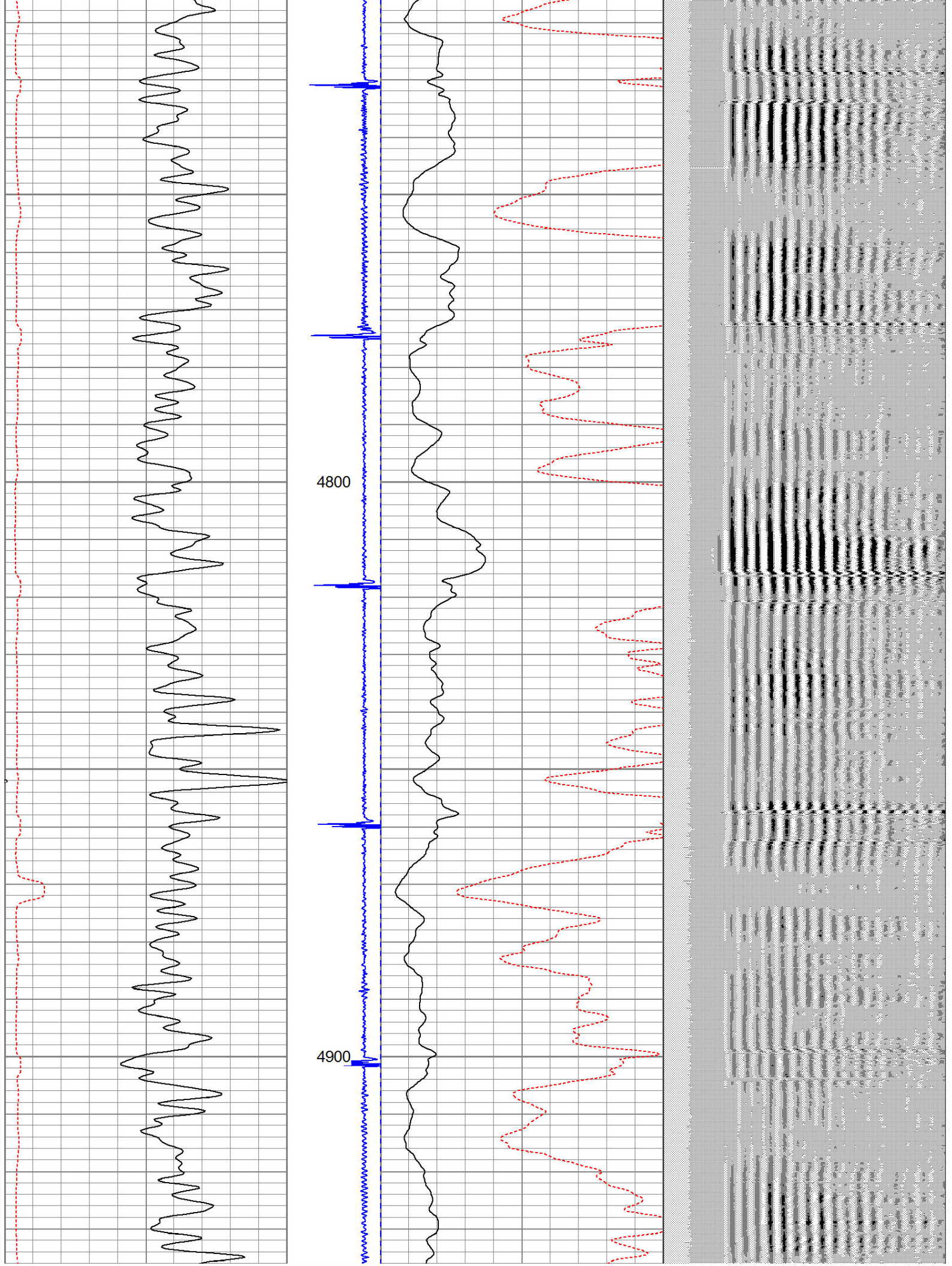


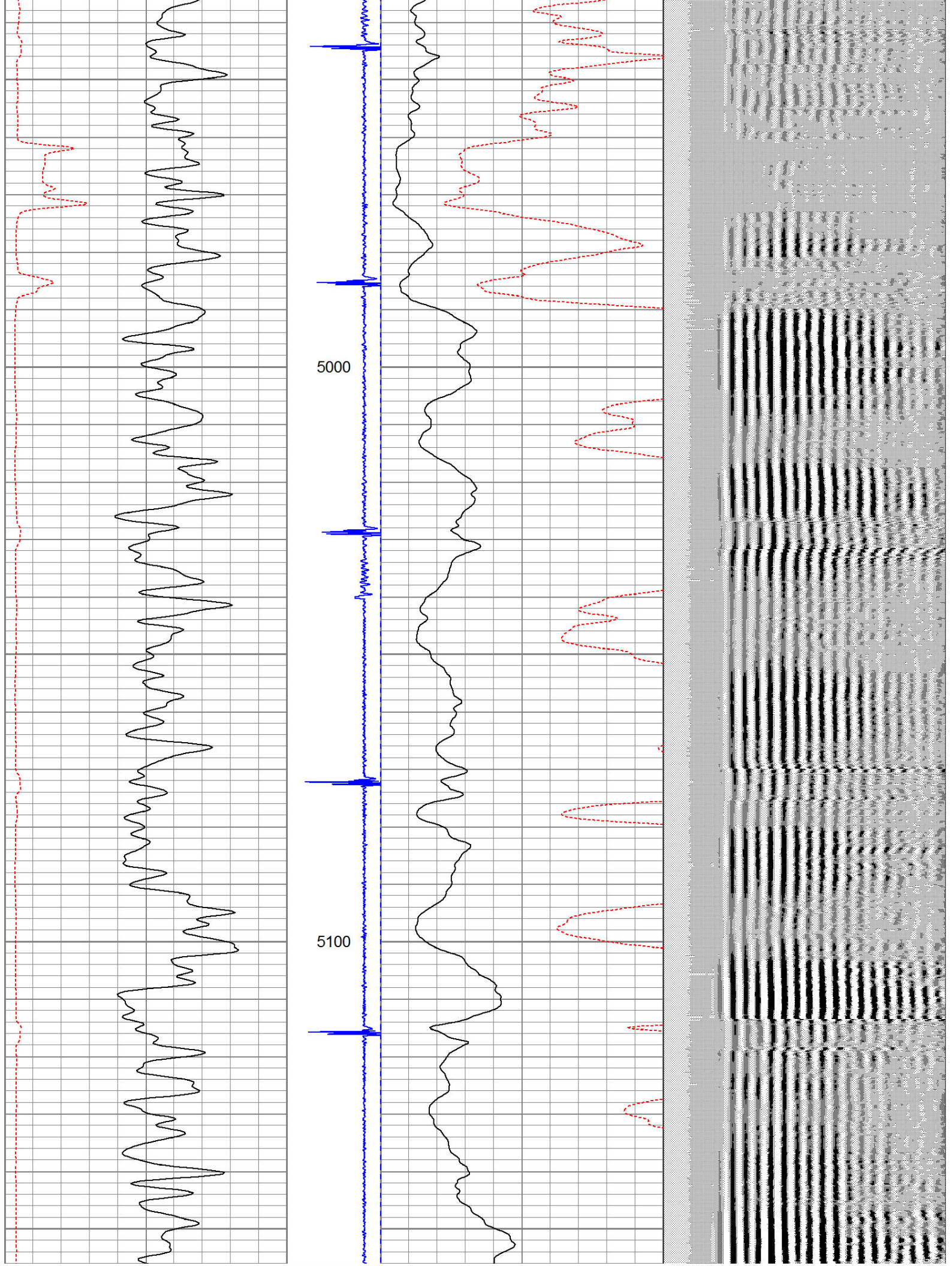


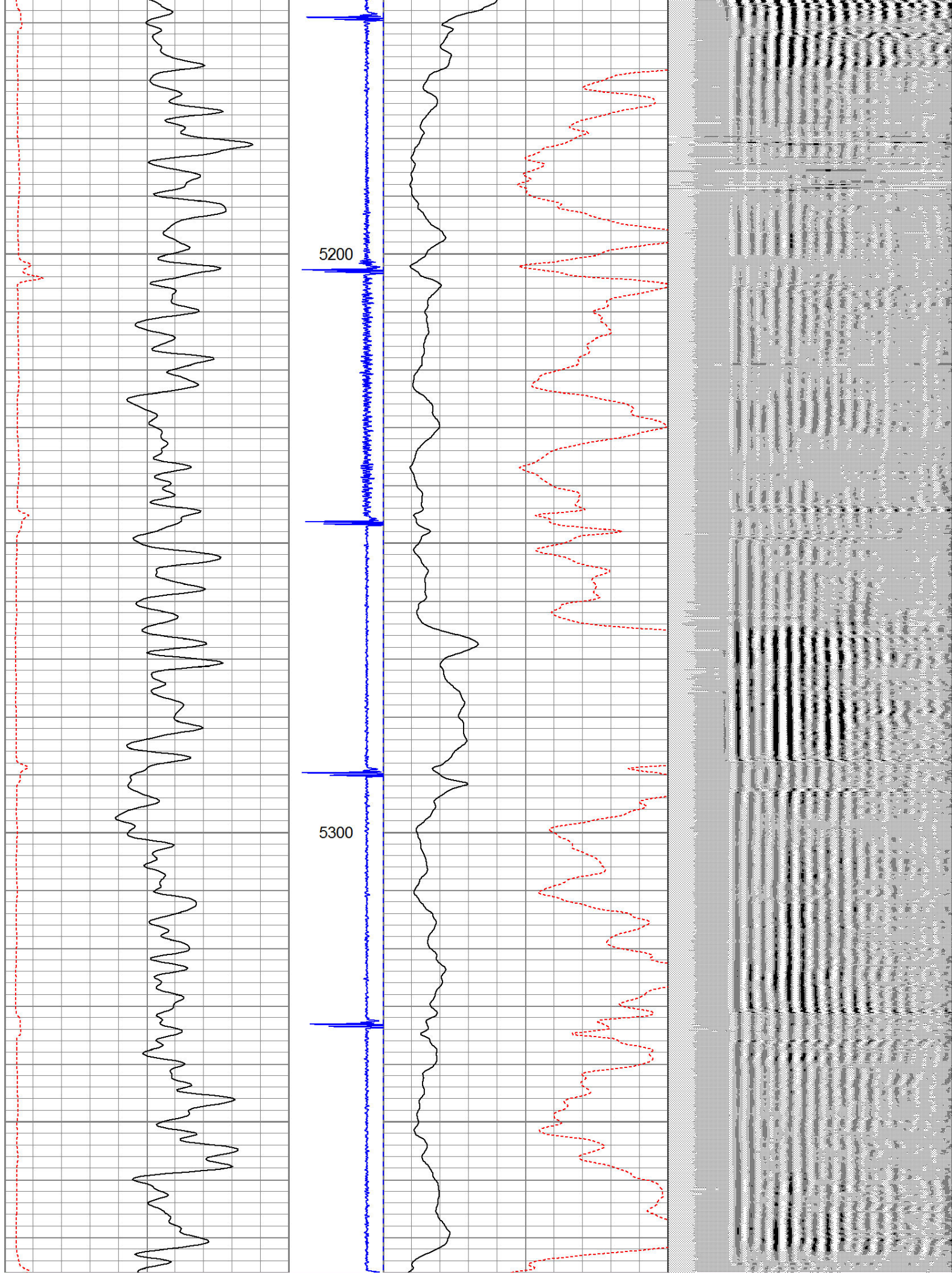


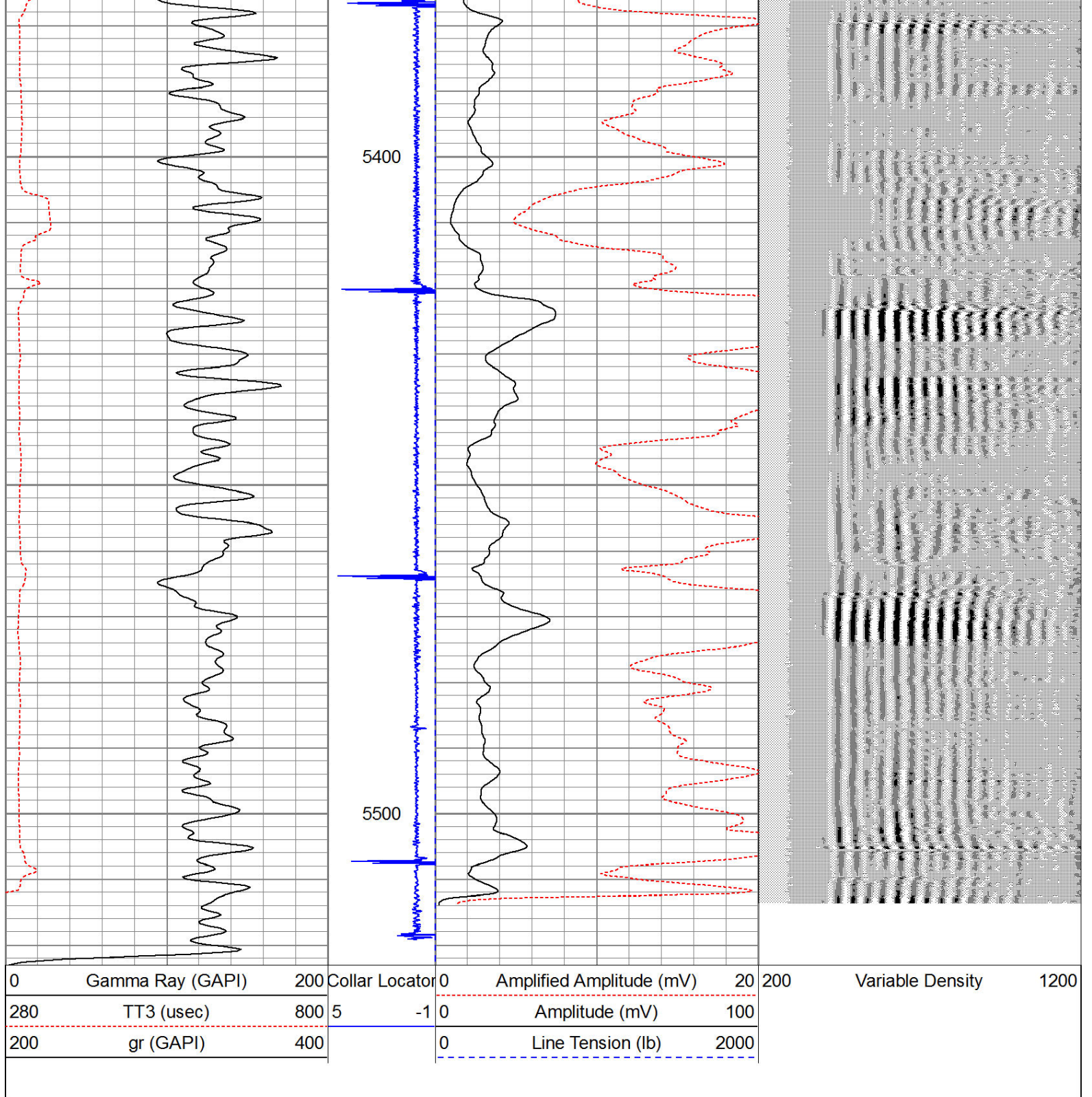




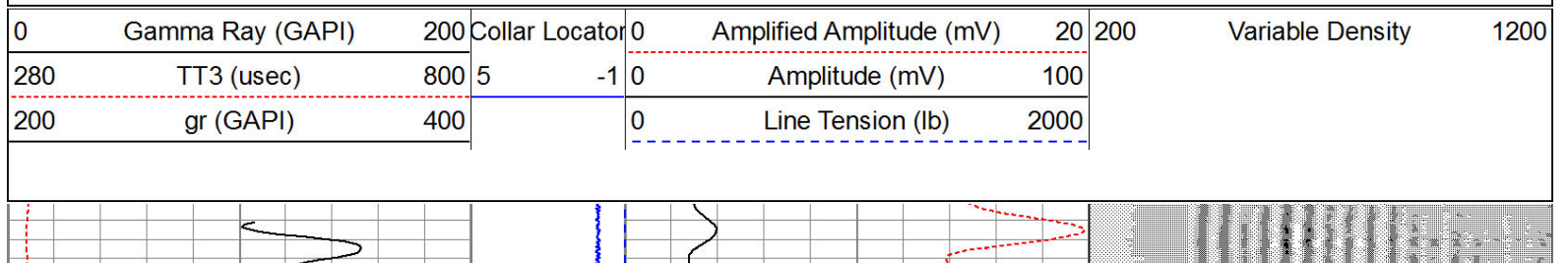


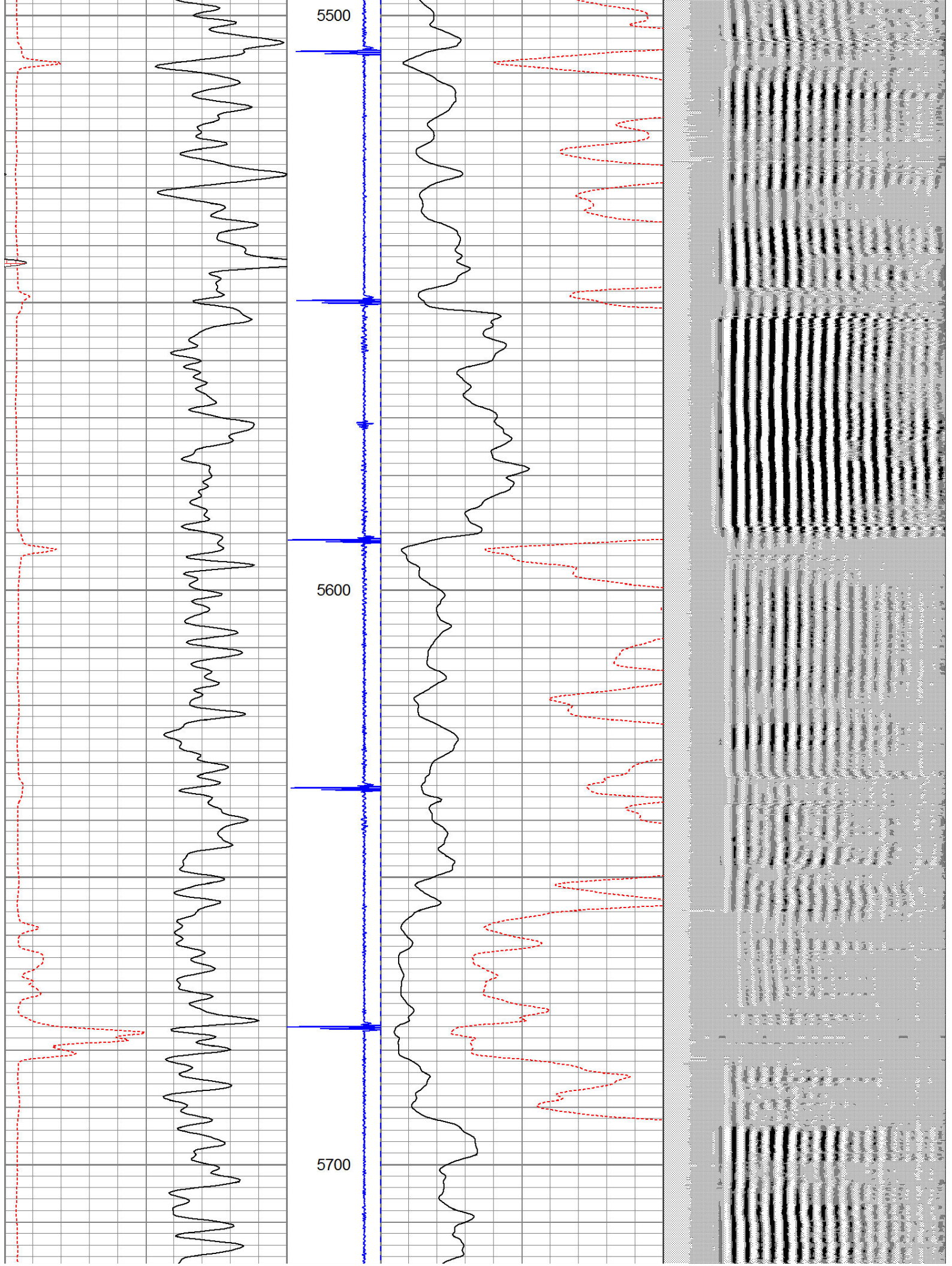


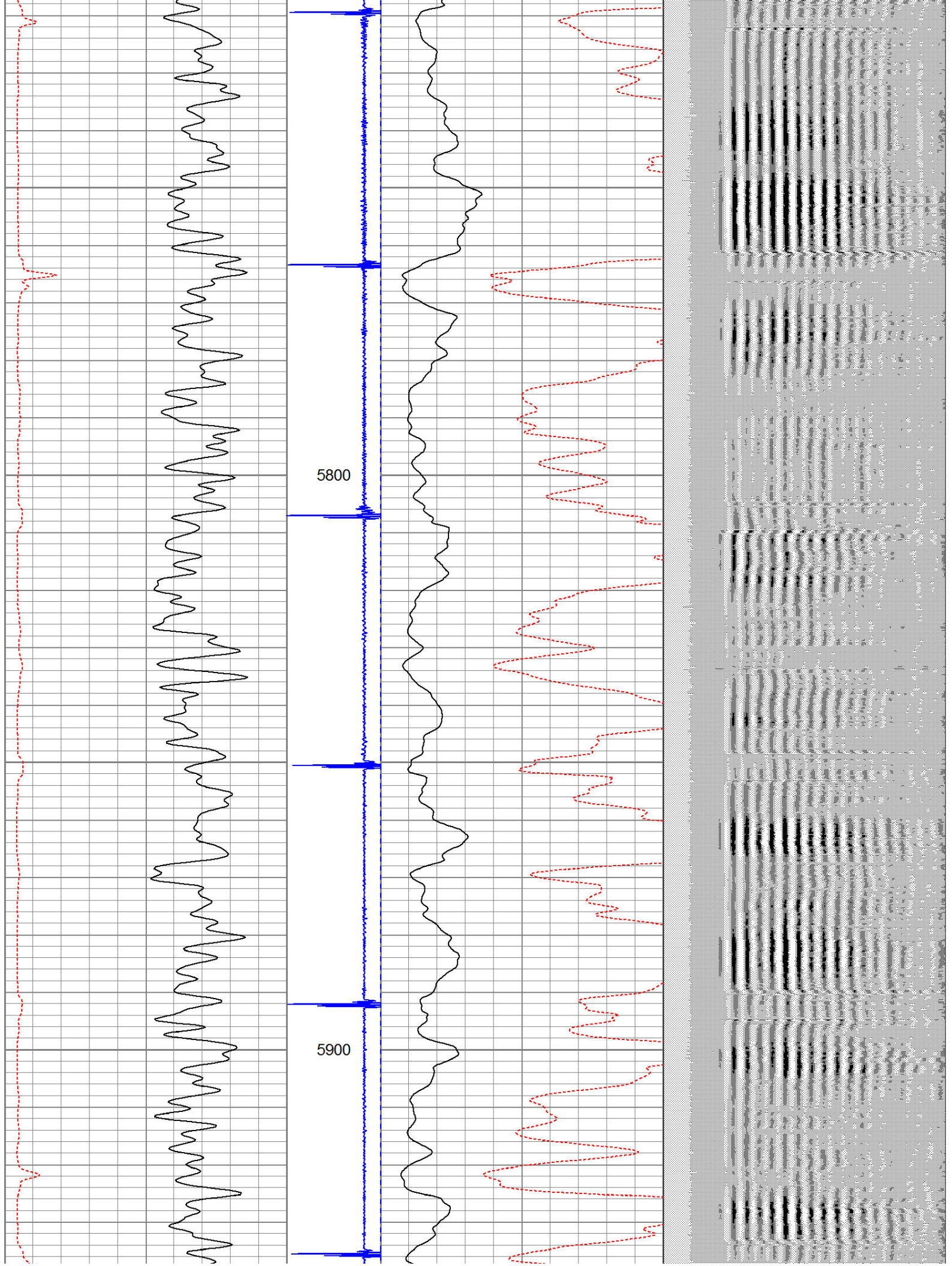


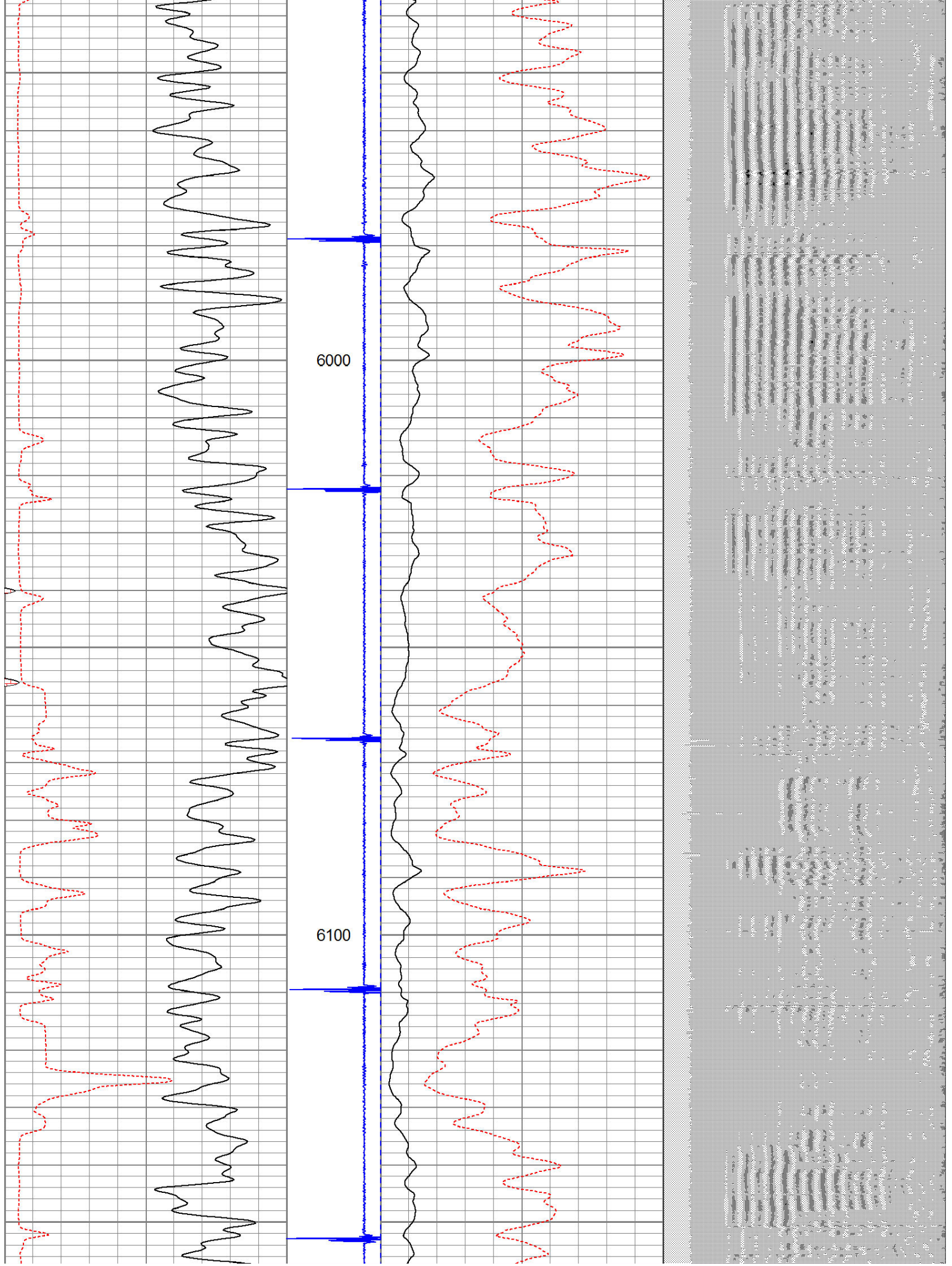


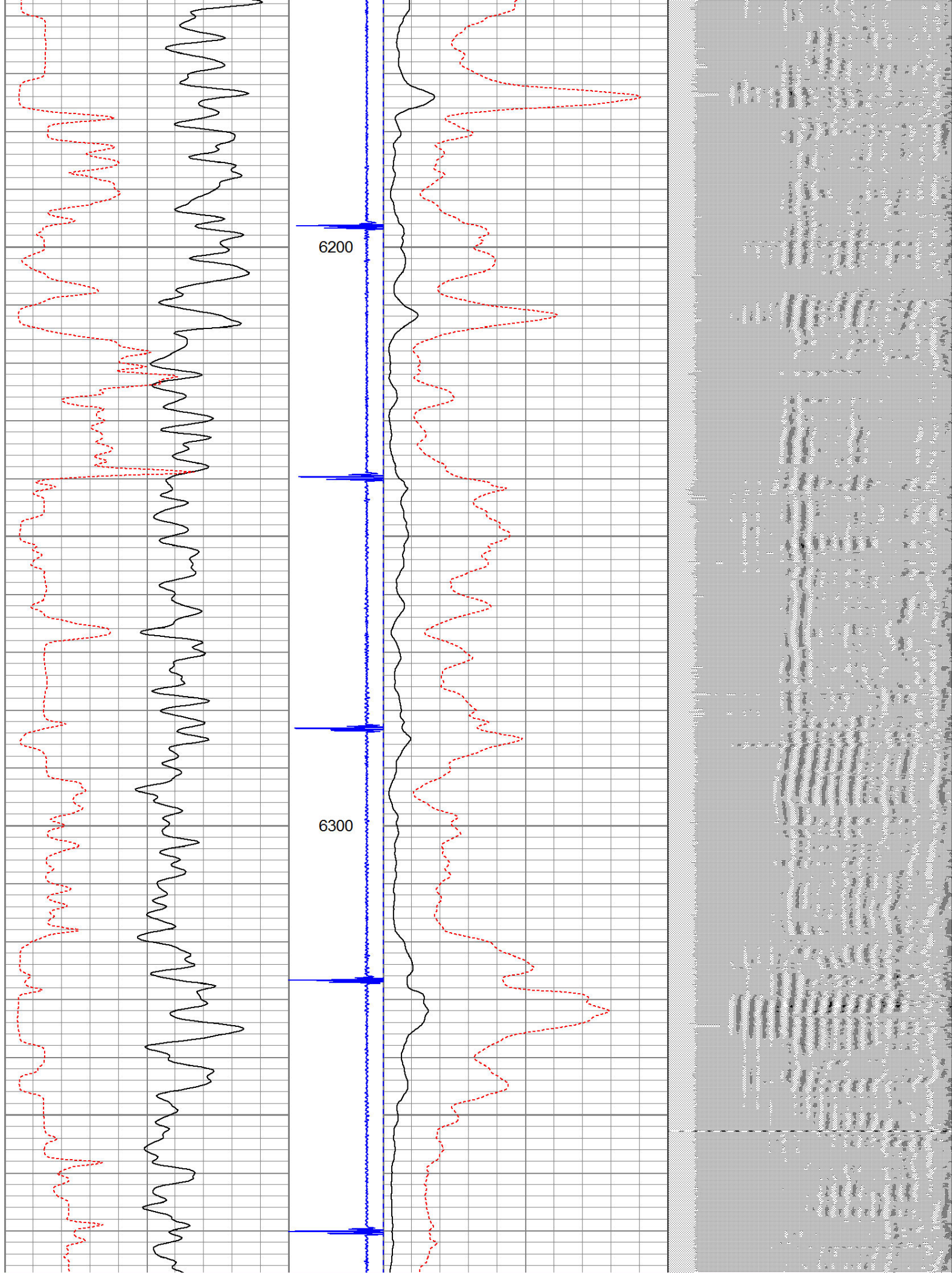
Database File: dechant 15-36.db
Dataset Pathname: pass2
Presentation Format: cbl4
Dataset Creation: Tue Mar 10 09:28:54 2009 by Log Std Casedhole 07122
Charted by: Depth in Feet scaled 1:240

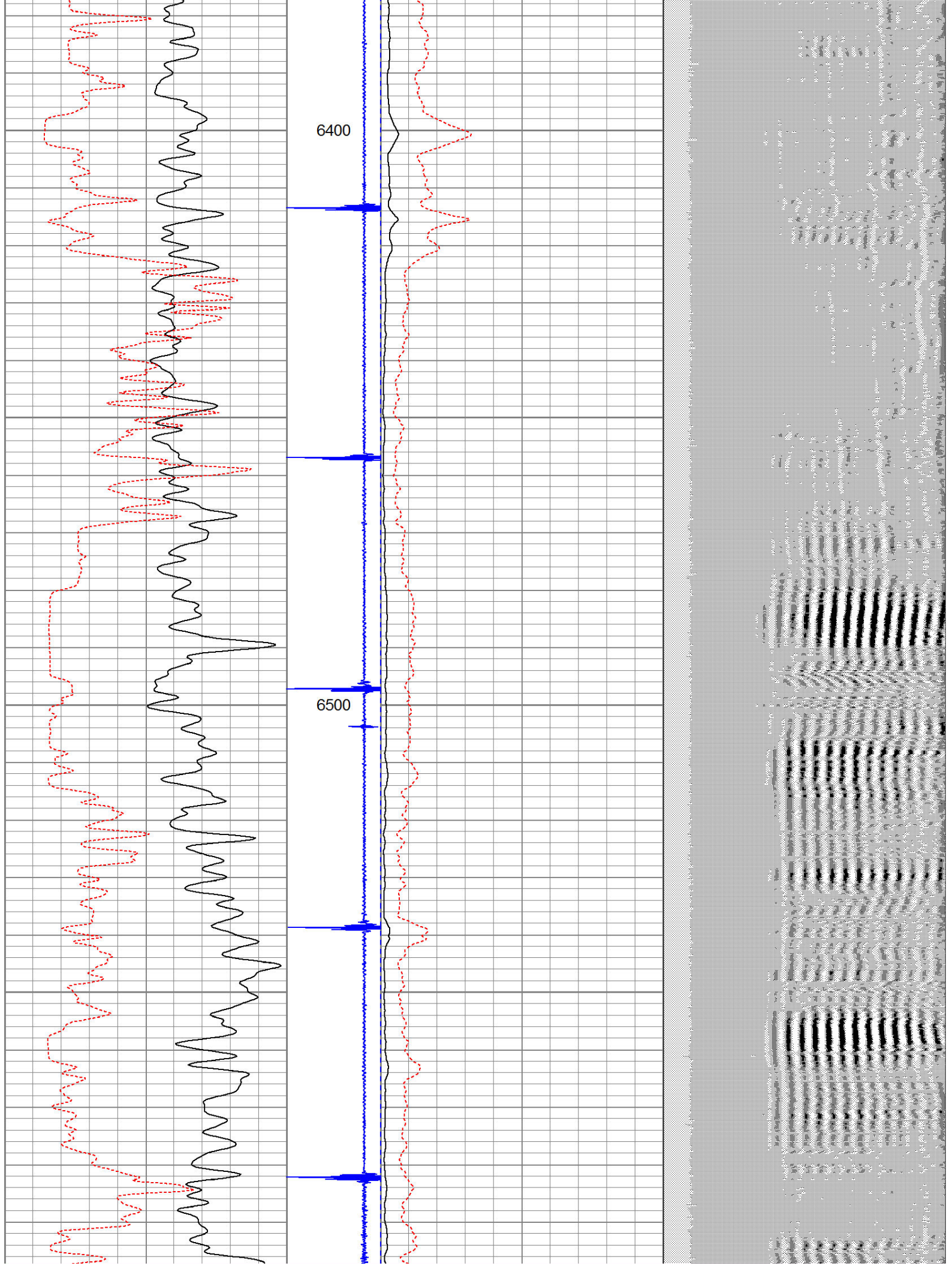


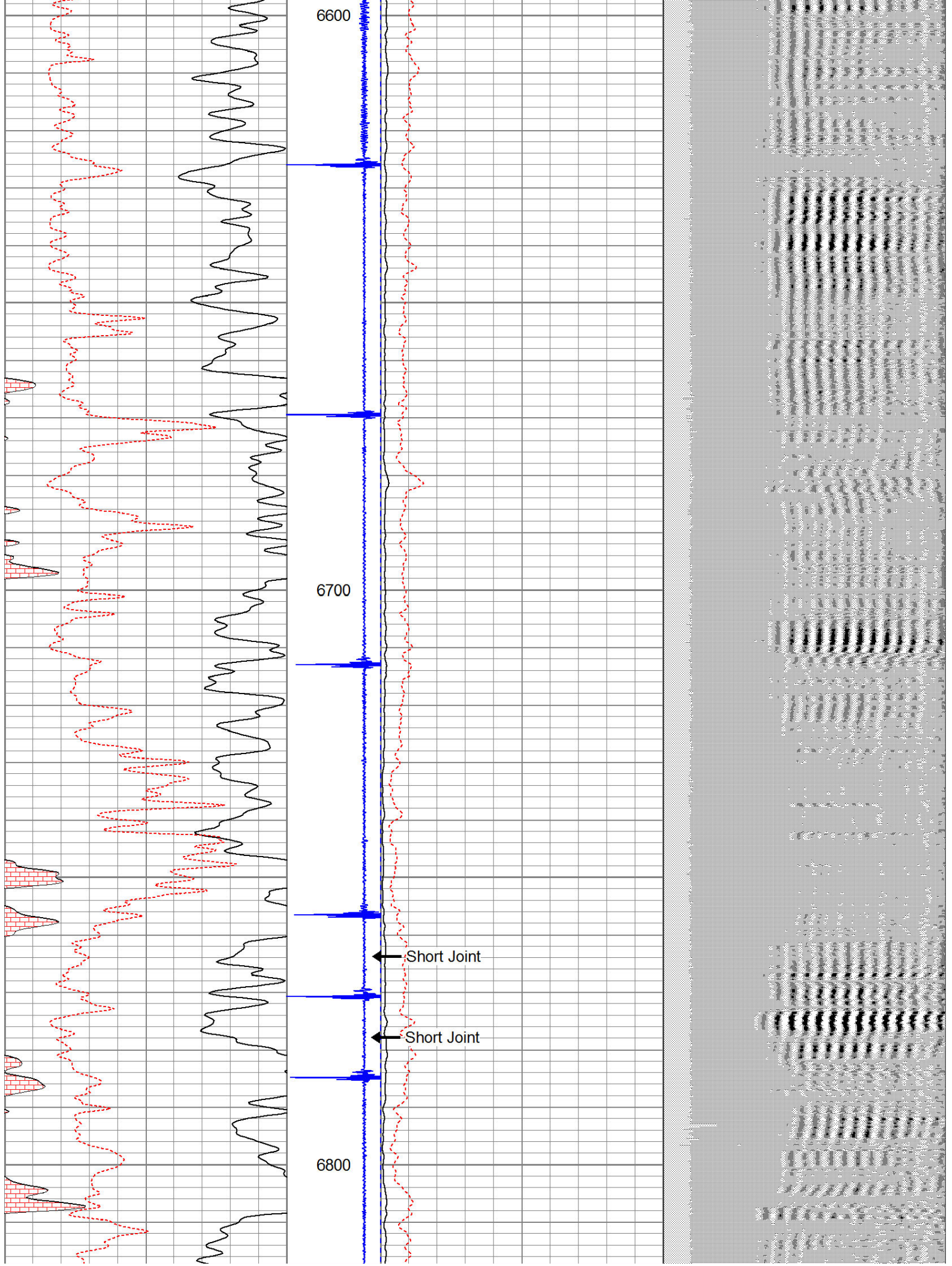


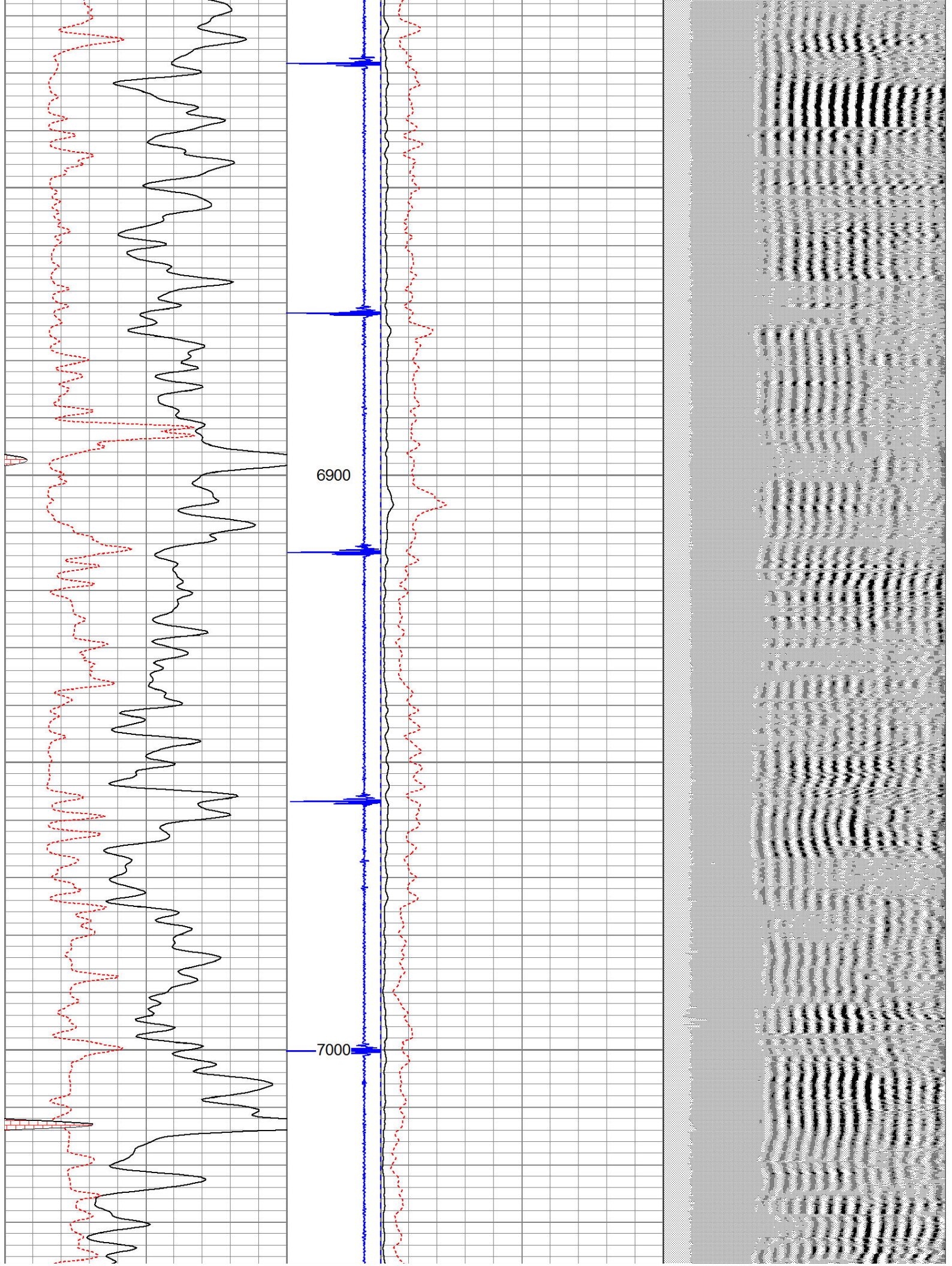


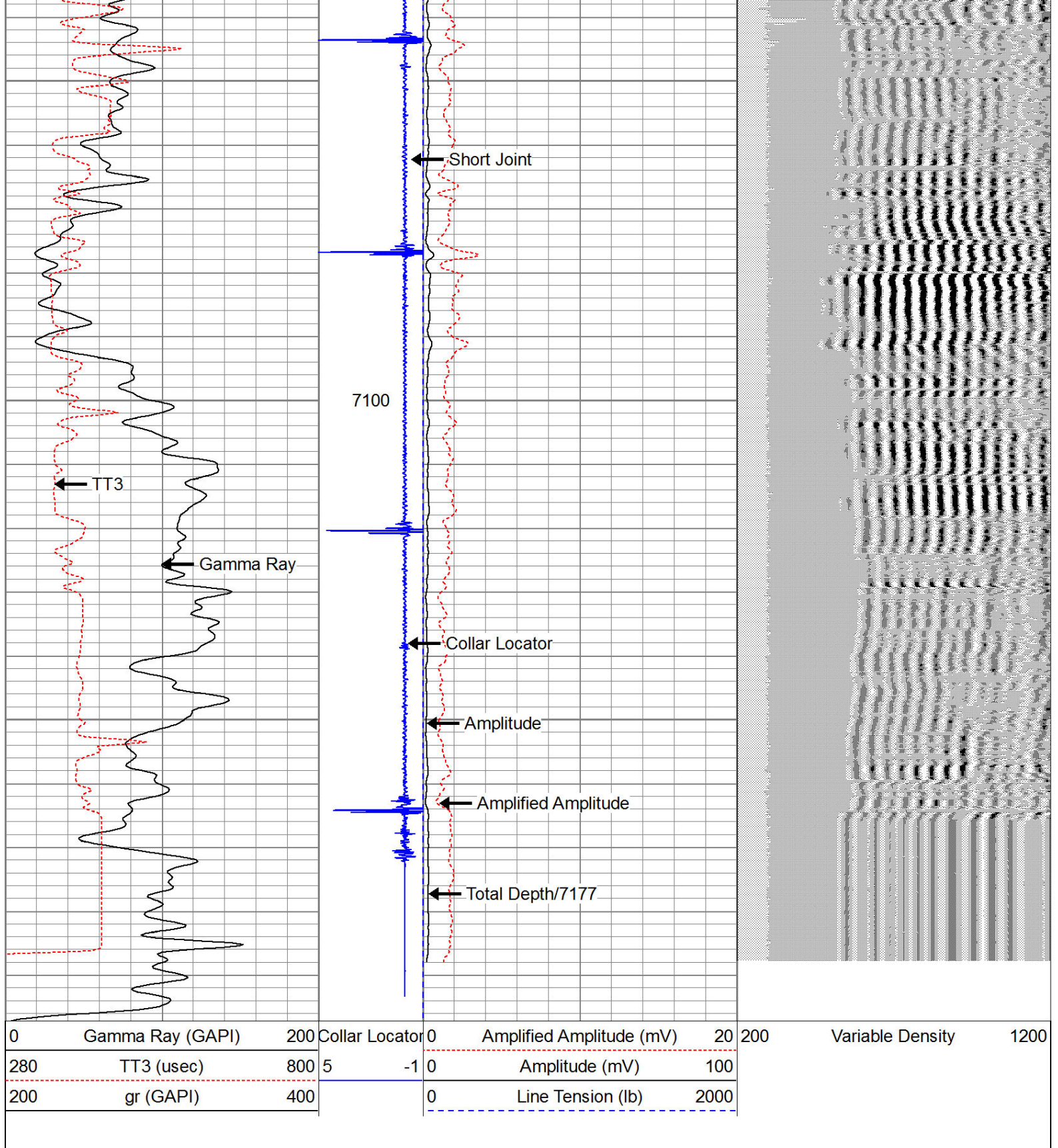












Company KERR-McGEE OIL & GAS ONSHORE LP
 Well DECHANT 15-36
 Field WATTENBERG
 County WELD
 State COLORADO