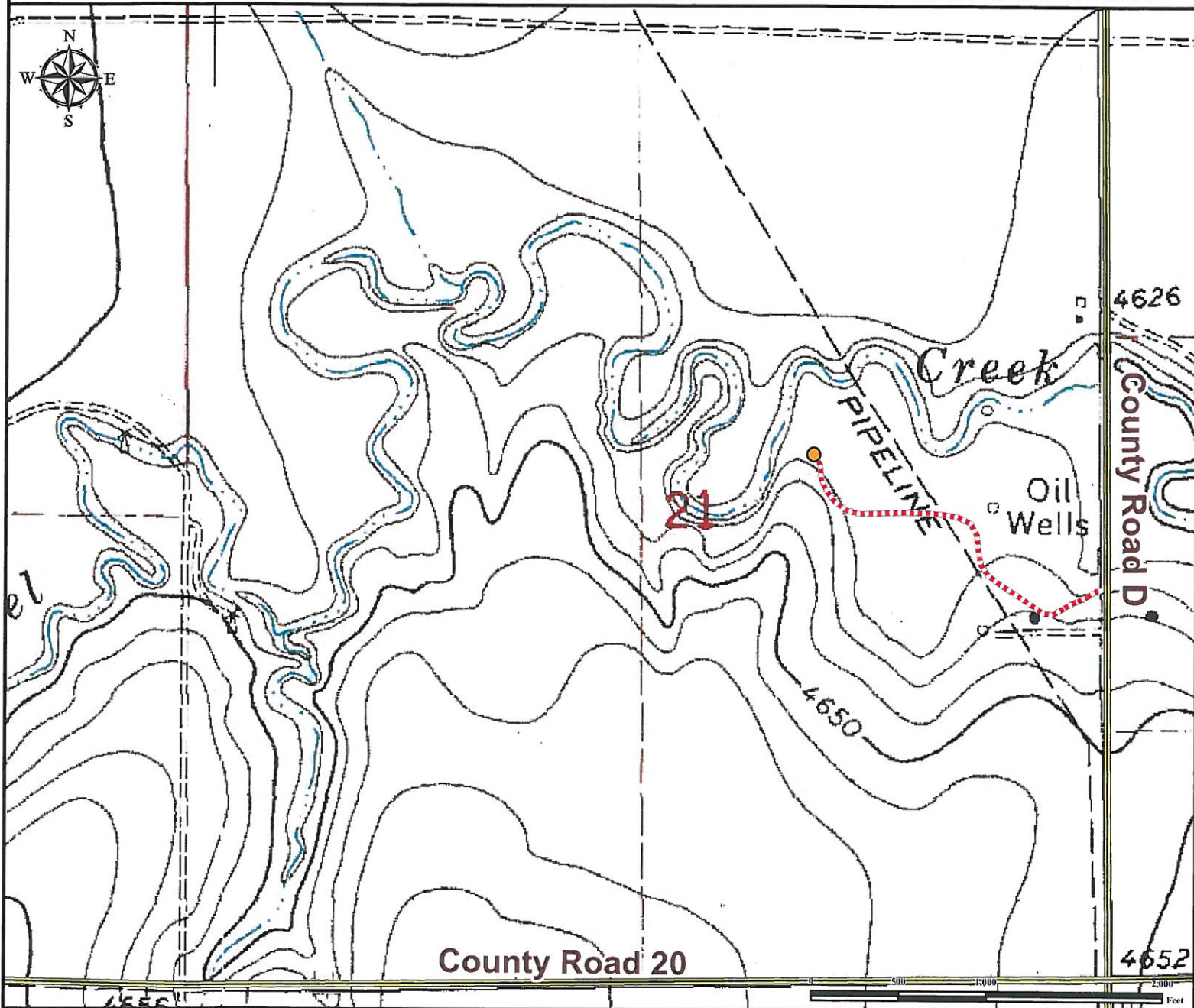


# Access Road Map

## SWAN 21-32

SW¼ NE¼ SECTION 21, TOWNSHIP 2 SOUTH, RANGE 56 WEST OF THE 6TH PRINCIPAL MERIDIAN



**From Byers, CO:** From the intersection of Highway 36 (Main St) and Interstate I-70 (Highway 287), Drive East on Highway 36 (Main St) for ±34.4 miles to CO-71.

**Turn Left** on CO-71\County Road G and proceed North ±8.0 miles to County Road 20.

**Turn Left** on County Road 20 and proceed West ±3.0 miles to County Road D.

**Turn Right** on County Road D and proceed North ±0.5 miles to proposed access road.

**Turn Left** and proceed West ±0.42 miles to proposed well pad location.

Total distance from Byers, CO to proposed well pad location is ±46.32 miles.

### Legend

● Proposed Well Pad    - - - - - Proposed Access Road    = = = Public Road

### Reference Location

\*\* All Measurements are Made from Reference Well SWAN 21-32 \*\*

Lat: 39.865034° Long: -103.655178° (NAD83)  
Elevation: 4620 Feet



Use our resources to find yours!  
[www.petro-fs.com](http://www.petro-fs.com)  
(303) 928-7128

Field Date: 11/16/2012  
Drafting Date: 12/07/2012  
Drafter: PAH  
Revision:

Data Sources:  
- TOPO courtesy of USGS

Prepared for:

