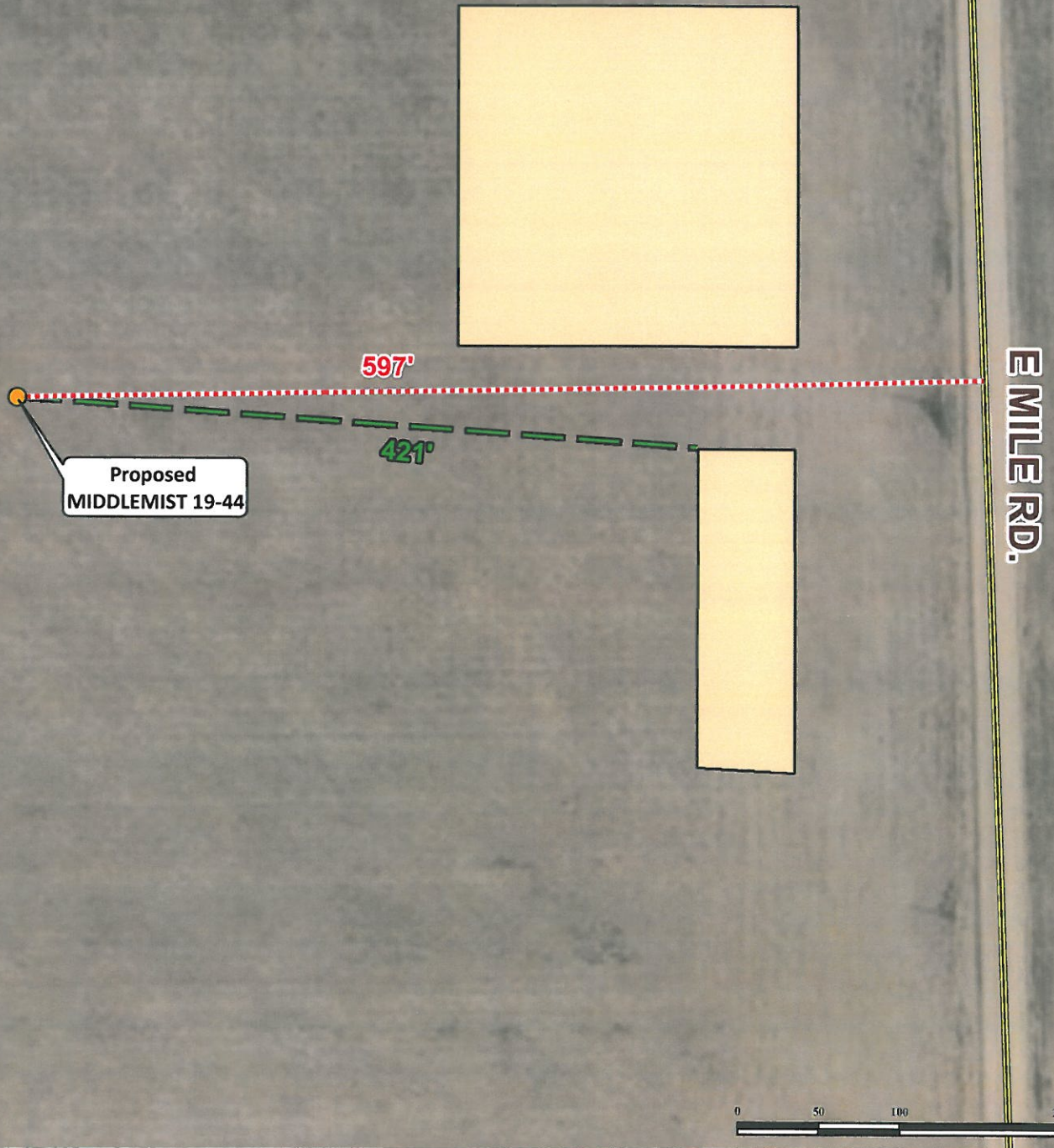


Proposed Flowline and Access Drawing
MIDDLEMIST 19-44 &
MIDDLEMIST 19-M FACILITY
 SECTION 19, TOWNSHIP 2 SOUTH, RANGE 57 WEST OF THE 6TH PRINCIPAL MERIDIAN



Legend

- | | | |
|---------------|-------------------|----------------------|
| Proposed Well | Proposed Facility | Proposed Access Road |
| | Proposed Flowline | Public Road |



Use our resources to find yours!
www.petro-fs.com
 (303) 928-7128

Field Date: 11/16/2012
 Drafting Date: 12/31/2012
 Drafter: GWB
 Revision:

Data Sources:
 - Aerial courtesy of NAIP (2009)

Prepared for:
BAYSWATER
 EXPLORATION AND PRODUCTION, LLC