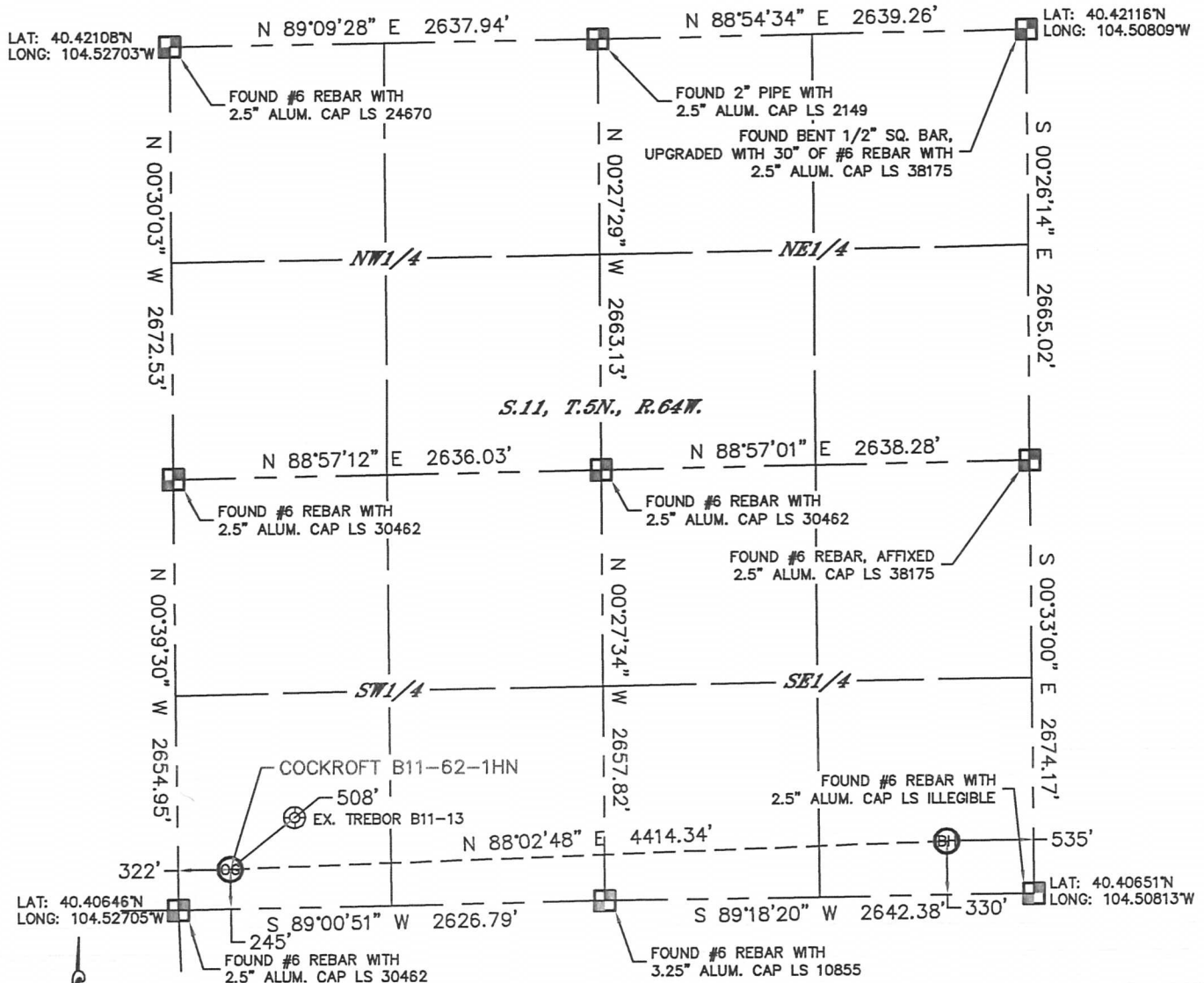


WELL LOCATION CERTIFICATE

THIS MAP DOES NOT REPRESENT A BOUNDARY SURVEY

SECTION: 11
TOWNSHIP: 5N
RANGE: 64W



In accordance with a request from Jacob Rice with Noble Energy Inc. Lat40°, Inc. has determined the surface location of the COCKROFT B11-62-1HN to be 245' from the SOUTH line and 322' from the WEST line and the bottom hole to be 330' from the SOUTH line and 535' from the EAST line as measured at right angles from the section lines of Section 11, Township 5 North, Range 64 West of the Sixth Principal Meridian, County of Weld, State of Colorado.

I hereby state that this Well Location Certificate was prepared by me, or under my direct supervision, that the fieldwork was completed on 3/16/2012, for and on behalf of Noble Energy Inc. That this is not a Land Survey Plat or an Improvement Survey Plat, and that it is not to be relied upon for establishment of fence, building, or other future improvement lines.

NOTE:

- 1) Bearings shown are Grid Bearings of the Colorado State Plane Coordinate System, North Zone, North American Datum 1983/2007. The lineal dimensions as contained herein are based upon the "U.S. Survey Foot."
- 2) Ground elevations are based on an observed GPS elevation (NAVD 1988 DATUM).
- 3) NEAREST EXISTING WELL: TREBOR B11-13, 508'
- 4) IMPROVEMENTS: See LOCATION DRAWING for all visible improvements within 400' of disturbed area.
- 5) SURFACE USE: CROP LAND
- 6) INSTRUMENT OPERATOR: ADAM KELLY

SURFACE LOCATION

LAT: 40.40713°N
LONG: 104.52590°W
PDOP: 1.6
ELEV: 4599'
1/4, 1/4: SW1/4SW1/4
NEAREST PROPERTY LINE: 245' SOUTH

BOTTOM HOLE

LAT: 40.40741°N
LONG: 104.51005°W

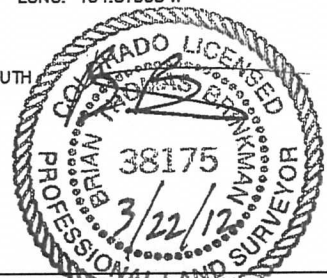
NOTE

According to Colorado law, you must commence any legal action based upon any defect in this W.L.C. within three years after you discover such defect. In no event, may any action based upon any defect in this survey be commenced more than ten years after the date of the certificate shown hereon. (13-80-105 C.R.S.)

LEGEND

- = ALIQUOT MONUMENT AS DESCRIBED
- = CALCULATED POSITION

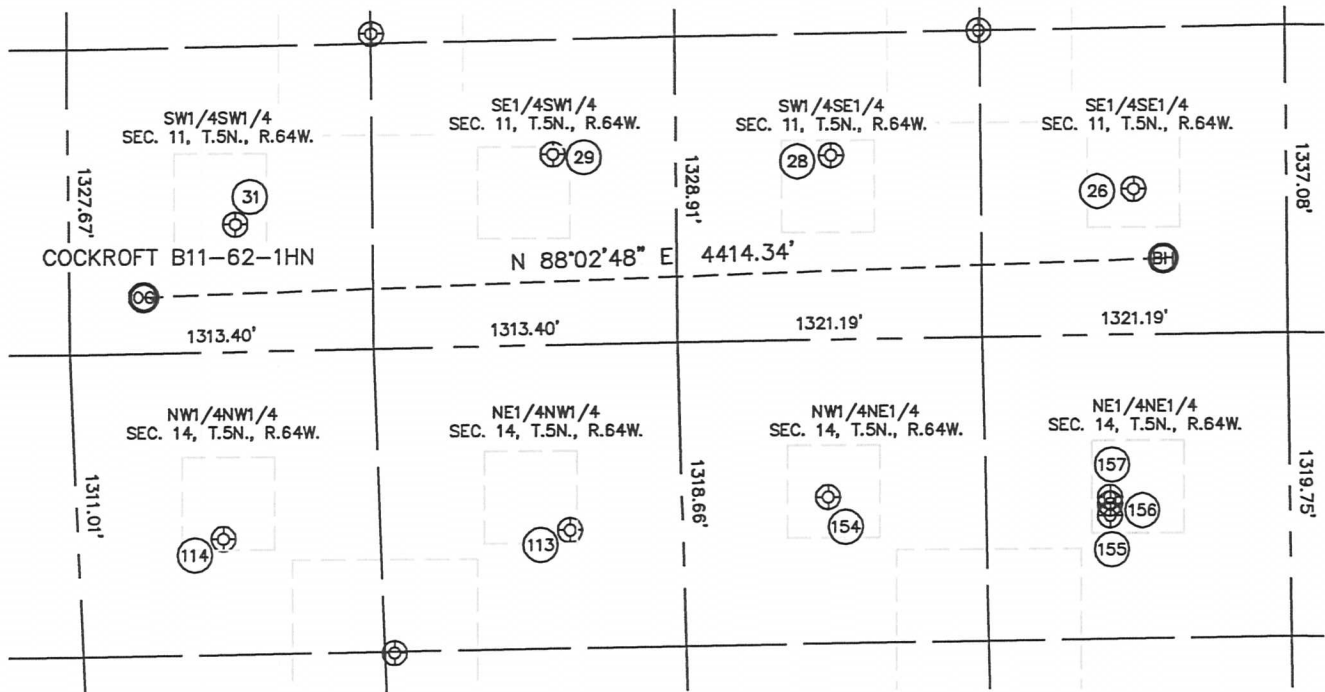
Brian T. Brinkman—On behalf of Lat40° Inc.
Colorado Licensed Professional Land Surveyor No. 38175
DATE: 3/21/2012
PROJECT#: 2012029



SITE SKETCH

COCKROFT B11-62-1HN

SECTION: 11
TOWNSHIP: 5N
RANGE: 64W



(26)
TREBOR B11-16
SE1/4SE1/4
634' FSL
661' FEL
LAT-40.40825°N
LONG-104.51050°W
PDOP: 1.4
ELEV: 4596'

(28)
TREBOR B11-15
SW1/4SE1/4
803' FSL
1969' FEL
LAT-40.40871°N
LONG-104.51520°W
PDOP: 1.3
ELEV: 4598'

(29)
TREBOR B11-14
SE1/4SW1/4
830' FSL
2099' FWL
LAT-40.40877°N
LONG-104.51952°W
PDOP: 1.3
ELEV: 4596'

(31)
TREBOR B11-13
SW1/4SW1/4
555' FSL
722' FWL
LAT-40.40799°N
LONG-104.52446°W
PDOP: 1.3
ELEV: 4600'

(113)
TREBOR B14-3
NE1/4NW1/4
803' FNL
2127' FWL
LAT-40.40429°N
LONG-104.51931°W
PDOP: 1.3
ELEV: 4585'

(114)
TREBOR B14-4
NW1/4NW1/4
808' FNL
627' FWL
LAT-40.40425°N
LONG-104.52470°W
PDOP: 1.9
ELEV: 4586'

(154)
SEYLER 2-14
NW1/4NE1/4
681' FNL
1998' FEL
LAT-40.40463°N
LONG-104.51530°W
PDOP: 1.4
ELEV: 4584'

(155)
SEYLER 41-14
NE1/4NE1/4
781' FNL
778' FEL
LAT-40.40436°N
LONG-104.51092°W
PDOP: 1.3
ELEV: 4592'

(156)
KCB 17-14
NE1/4NE1/4
731' FNL
778' FEL
LAT-40.40450°N
LONG-104.51092°W
PDOP: 2.0
ELEV: 4592'

(157)
KCB 27-14
NE1/4NE1/4
702' FNL
778' FEL
LAT-40.40458°N
LONG-104.51092°W
PDOP: 1.4
ELEV: 4592'

