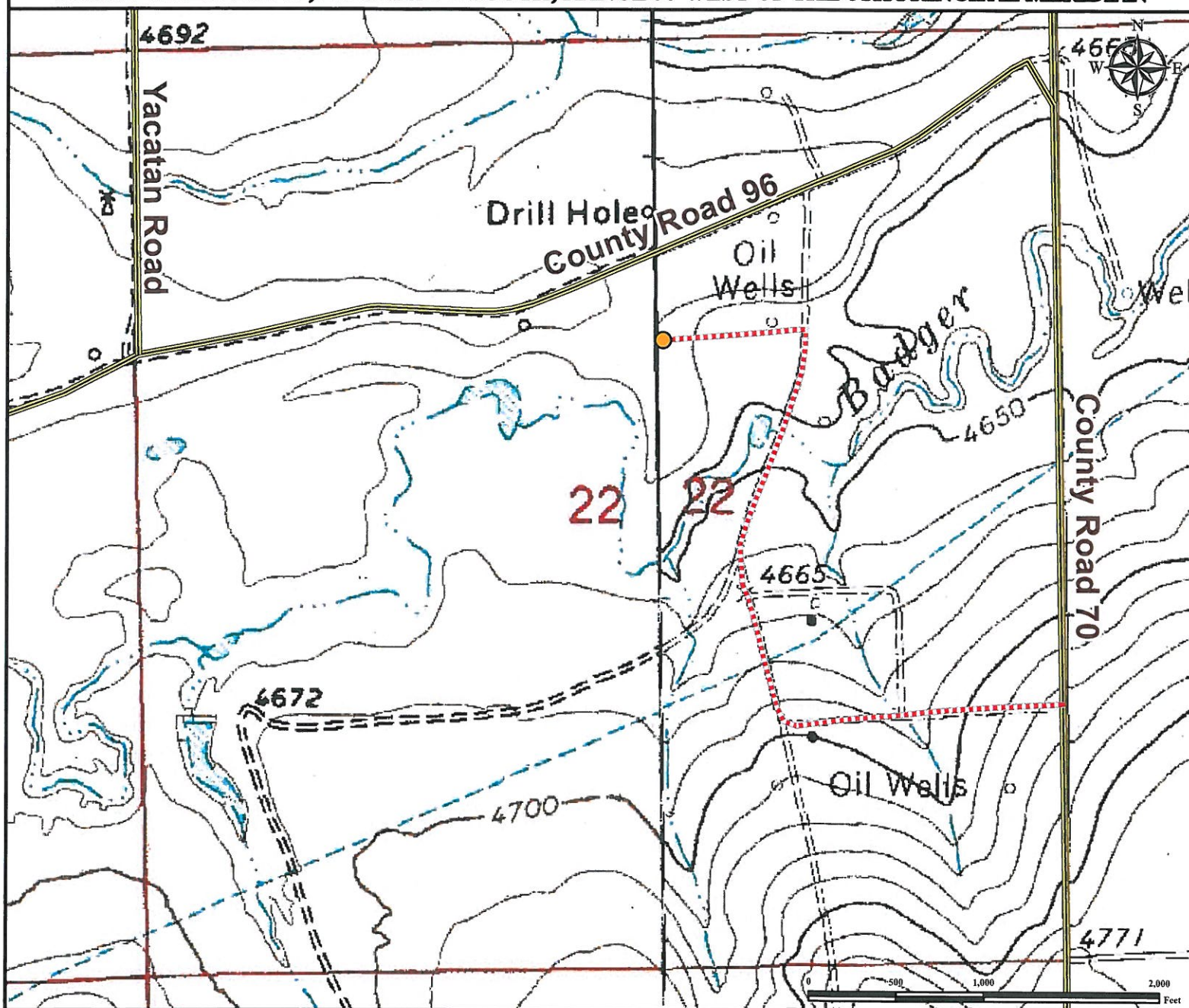


# Access Road Map

## BADGER CREEK 22-32

SW¼ NE¼ SECTION 22, TOWNSHIP 2 SOUTH, RANGE 57 WEST OF THE 6TH PRINCIPAL MERIDIAN



**From Byers, CO:** From the intersection of Highway 36 (Main St) and Interstate I-70 (Highway 287), Drive East on Highway 36 (Main St) for ±26.6 miles to County Road 70.

Turn Left and proceed North ±8.3 miles to proposed access road.

Turn Left and proceed West ±0.3 miles. Turn Right with road and continue ±0.46 miles North. Turn Left with road and continue Southwest ±0.15 miles to proposed well pad location.

Total distance from Byers, CO to proposed well pad location is ±35.81 miles.

### Legend

● Proposed Well Pad     
 ---- Proposed Access Road     
 == Public Road

### Reference Location

\*\* All Measurements are Made from Reference Well BADGER CREEK 22-32 \*\*

Lat: 39.866182° Long: -103.750386° (NAD83)  
Elevation: 4658 Feet



Use our resources to find yours!

[www.petro-fs.com](http://www.petro-fs.com)

(303) 928-7128

Field Date: 11/16/2012  
Drafting Date: 11/29/2012  
Drafter: PAH  
Revision:

### Data Sources:

- TOPO courtesy of USGS

### Prepared for:

BAYSWATER  
EXPLORATION AND PRODUCTION, LLC