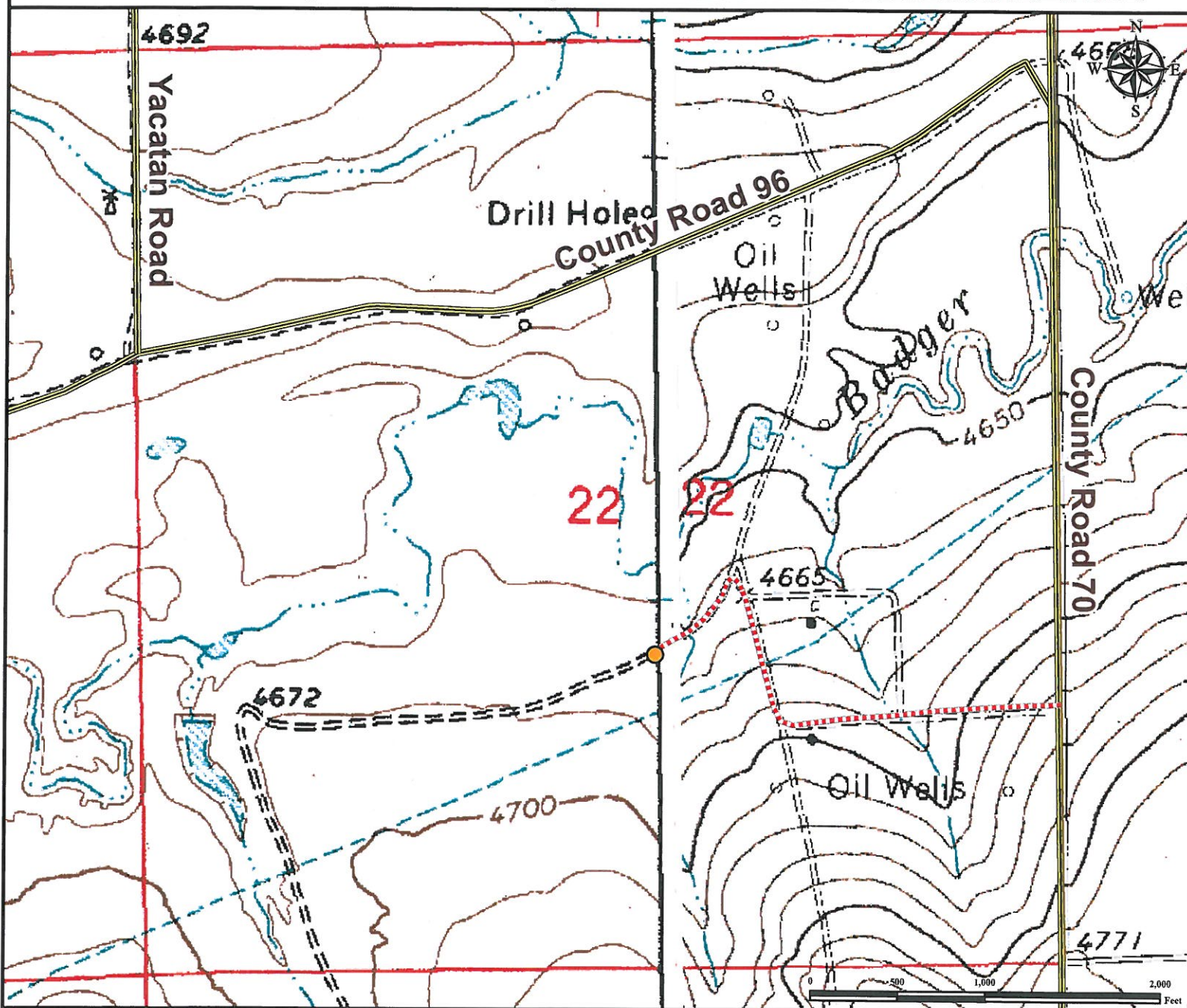


# Access Road Map

## BADGER CREEK 22-33

NW¼ SE¼ SECTION 22, TOWNSHIP 2 SOUTH, RANGE 57 WEST OF THE 6TH PRINCIPAL MERIDIAN



**From Byers, CO:** From the intersection of Highway 36 (Main St) and Interstate I-70 (Highway 287), Drive East on Highway 36 (Main St) for ±26.6 miles to County Road 70. Turn Left and proceed North ±8.3 miles to proposed access road. Turn Left and proceed West ±0.3 miles. Turn Right with road and continue ±0.17 miles North. Turn Left with road and continue Southwest ±0.13 miles to proposed well pad location. Total distance from Byers, CO to proposed well pad location is ±35.5 miles.

### Legend

● Proposed Well      - - - - - Proposed Access Road      = = = = = Public Road

### Reference Location

\*\* All Measurements are Made from Reference Well BADGER CREEK 22-33 \*\*  
Lat: 39.861264° Long:-103.750556° (NAD83)  
Elevation: 4668 Feet



Use our resources to find yours!  
[www.petro-fs.com](http://www.petro-fs.com)  
(303) 928-7128

Field Date: 11/16/2012  
Drafting Date: 11/30/2012  
Drafter: PAH  
Revision:

Data Sources:  
- TOPO courtesy of USGS

Prepared for:

