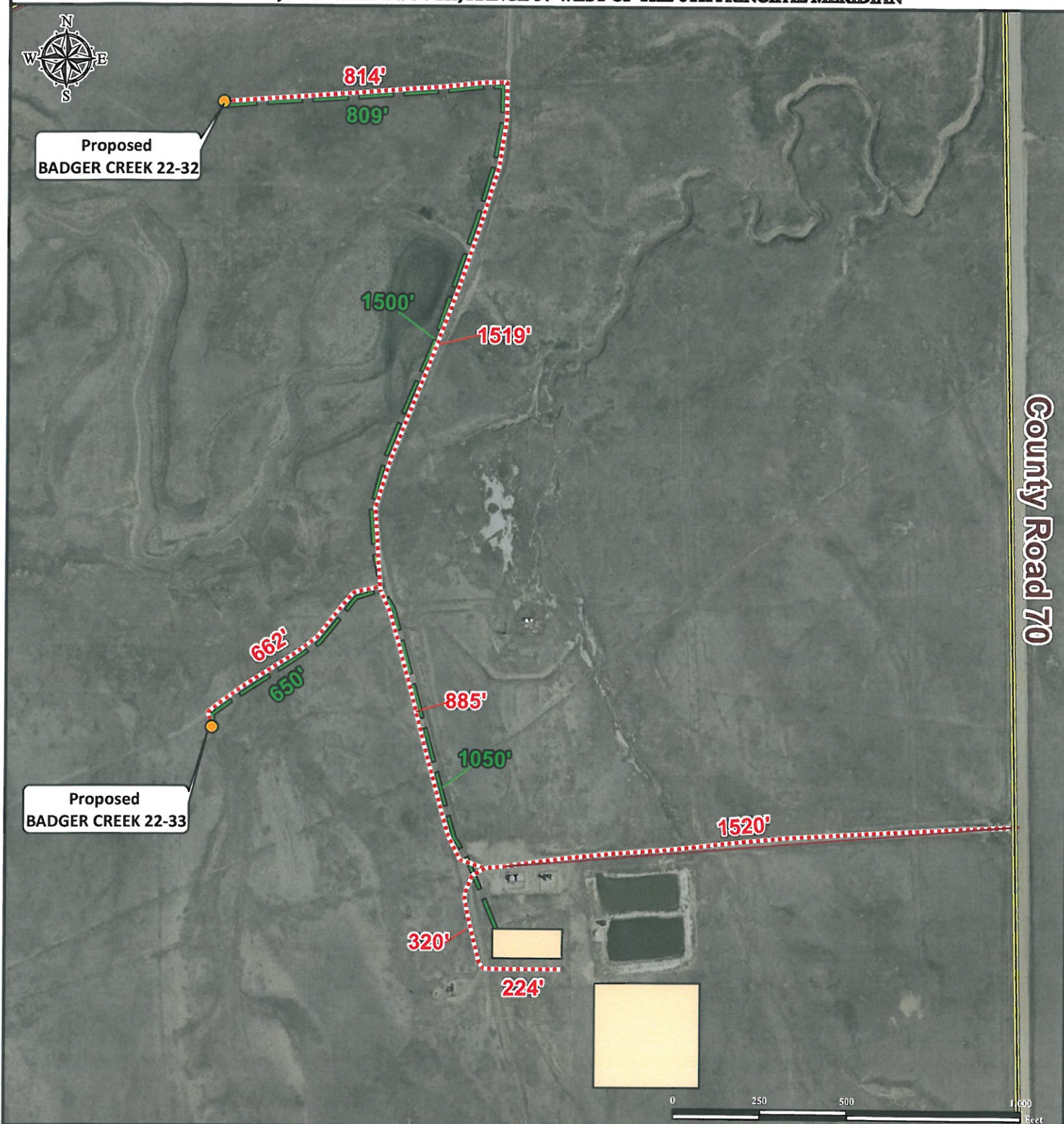


Proposed Flowline and Access Drawing **BADGER CREEK 22-32, BADGER CREEK 22-33,** **& BADGER CREEK 22-N FACILITY**

SECTION 22, TOWNSHIP 2 SOUTH, RANGE 57 WEST OF THE 6TH PRINCIPAL MERIDIAN



Legend

● Proposed Well

■ Proposed Facility
 — Proposed Flowline

--- Proposed Access Road
 === Public Road



Use our resources to find yours!
www.petro-fs.com
 (303) 928-7128

Field Date: 11/16/2012
 Drafting Date: 12/27/2012
 Drafter: KLM
 Revision:

Data Sources:
 - Aerial courtesy of NAIP (2009)

Prepared for:



BAYSWATER
 EXPLORATION AND PRODUCTION, LLC