

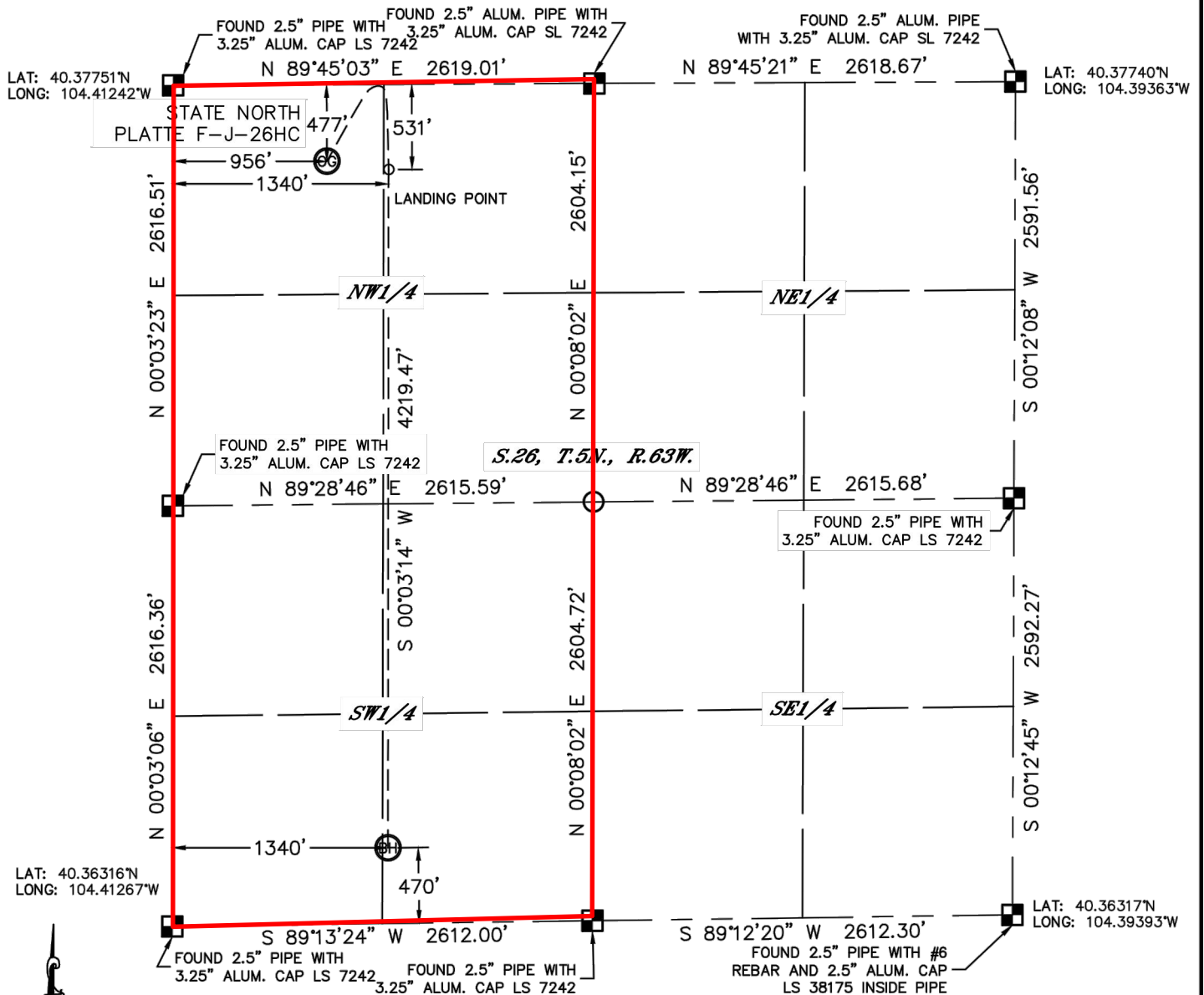


Lat40°, Inc. 1635 Foxtrail Drive, Suite 325 Loveland, CO 970-776-3321

WELL LOCATION CERTIFICATE

THIS MAP DOES NOT REPRESENT A BOUNDARY SURVEY

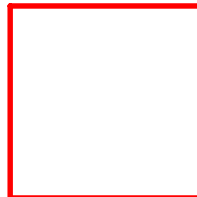
SECTION: 26
TOWNSHIP: 5N
RANGE: 63W



In accordance with a request from Michael Meagher with BONANZA CREEK ENERGY, INC. Lat40°, Inc. has determined the surface location of the STATE NORTH PLATTE F-J-26HC to be 477' from the NORTH line and 956' from the WEST line and the bottom hole to be 470' from the SOUTH line and 1340' from the WEST line as measured at right angles from the section lines of Section 26, Township 5



**BONANZA
CREEK**



Wellbore Spacing Unit Outline
Codell Formation



Wellbore Spacing Unit Map

12 March 2013 ksc

State North Platte F-J-26HC
W/2 Sec 26 T5N R63W 6th PM
Weld County, Colorado