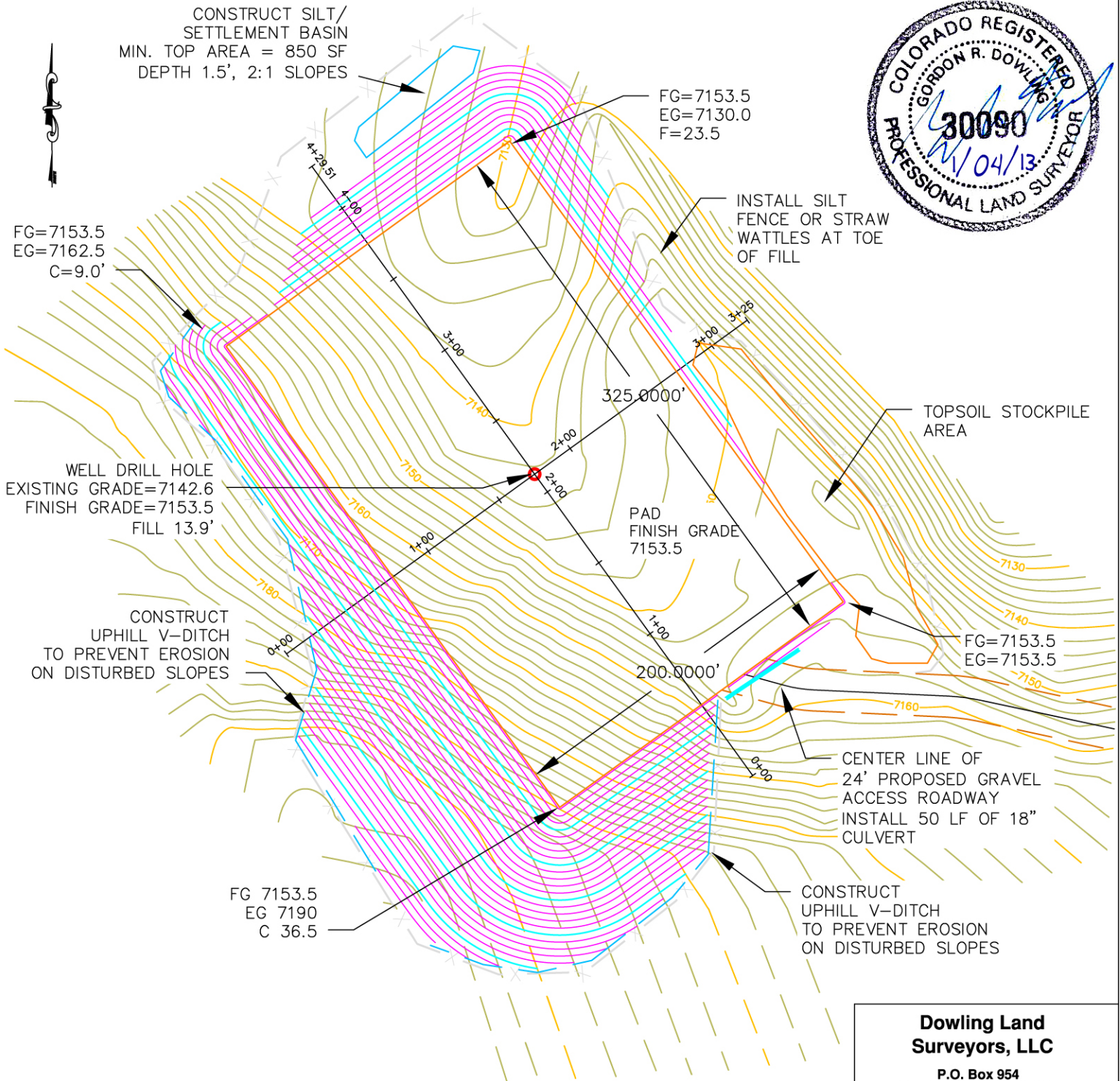


**PEAKVIEW OPERATING COMPANY, LLC  
GRASSY CREEK 13-26 WELL LAYOUT  
NW ¼ SW ¼ SECTION 26,  
T6N, R87W, 6TH P.M.,  
ROUTT COUNTY, COLORADO**

**DISTURBANCE AREAS**

1) APPROXIMATELY 2.81 ACRES OF DISTURBANCE AT WELL SITE, 0.37 ACRES OF DISTURBANCE FOR CONSTRUCTION OF ACCESS ROADWAY.  
TOTAL DISTURBANCE = 3.18 ACRES.

2) OVERLOT GRADING AT WELL PAD SITE, ESTIMATED 1.0' OF TOPSOIL.  
CLEARING 4,540 C.Y. OF TOPSOIL  
CUT = 18,925 C.Y. OF MATERIAL  
FILL REQUIRED TO 7153.5 FINISH GRADE = 18,973 C.Y. OF MATERIAL  
IMPORT FILL REQUIRED = 50 C.Y.



**NOTES:**

- 1) WELL LOCATED IN THE NW ¼ SW ¼ OF SECTION 26, TOWNSHIP 6 NORTH, RANGE 87 WEST, 6TH P.M., ROUTT COUNTY, COLORADO.
- 2) 886 FEET FROM WEST LINE OF SECTION 26, 1968 FEET FROM THE SOUTH LINE OF SECTION 26, T6N, R87W.
- 3) PEAKVIEW OPERATING COMPANY, LLC., 216 SIXTEENTH STREET, SUITE 1450, DENVER, CO 80202

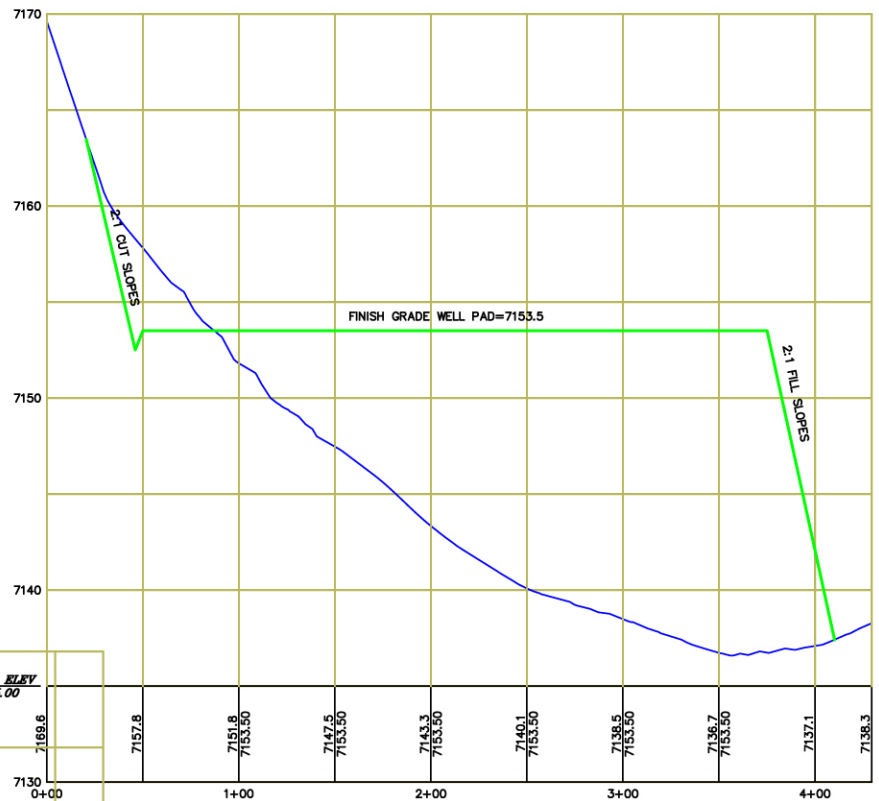
**Dowling Land  
Surveyors, LLC**

P.O. Box 954  
Hayden, Colorado 81639  
(970)-276-3613  
dowling@plotz.biz

**Horizontal Scale**  
1" = 80'

**FIGURE 1**  
Revisions: 1-4-2013  
DATE: 11-20-2012  
JOB NO. 1208-019

PEAKVIEW OPERATING COMPANY, LLC  
GRASSY CREEK 13-26 WELL LAYOUT  
NW ¼ SW ¼ SECTION 26,  
T6N, R87W, 6TH P.M.,  
ROUTT COUNTY, COLORADO



NORTH-SOUTH  
PAD PROFILE



EAST-WEST  
PAD PROFILE

NOTES:

- 1) WELL LOCATED IN THE NW ¼ SW ¼ OF SECTION 26, TOWNSHIP 6 NORTH, RANGE 87 WEST, 6TH P.M., ROUTT COUNTY, COLORADO.
- 2) 886 FEET FROM WEST LINE OF SECTION 26, 1968 FEET FROM THE SOUTH LINE OF SECTION 26, T6N, R87W.
- 3) PEAKVIEW OPERATING COMPANY, LLC., 216 SIXTEENTH STREET, SUITE 1450, DENVER, CO 80202



**Dowling Land  
Surveyors, LLC**

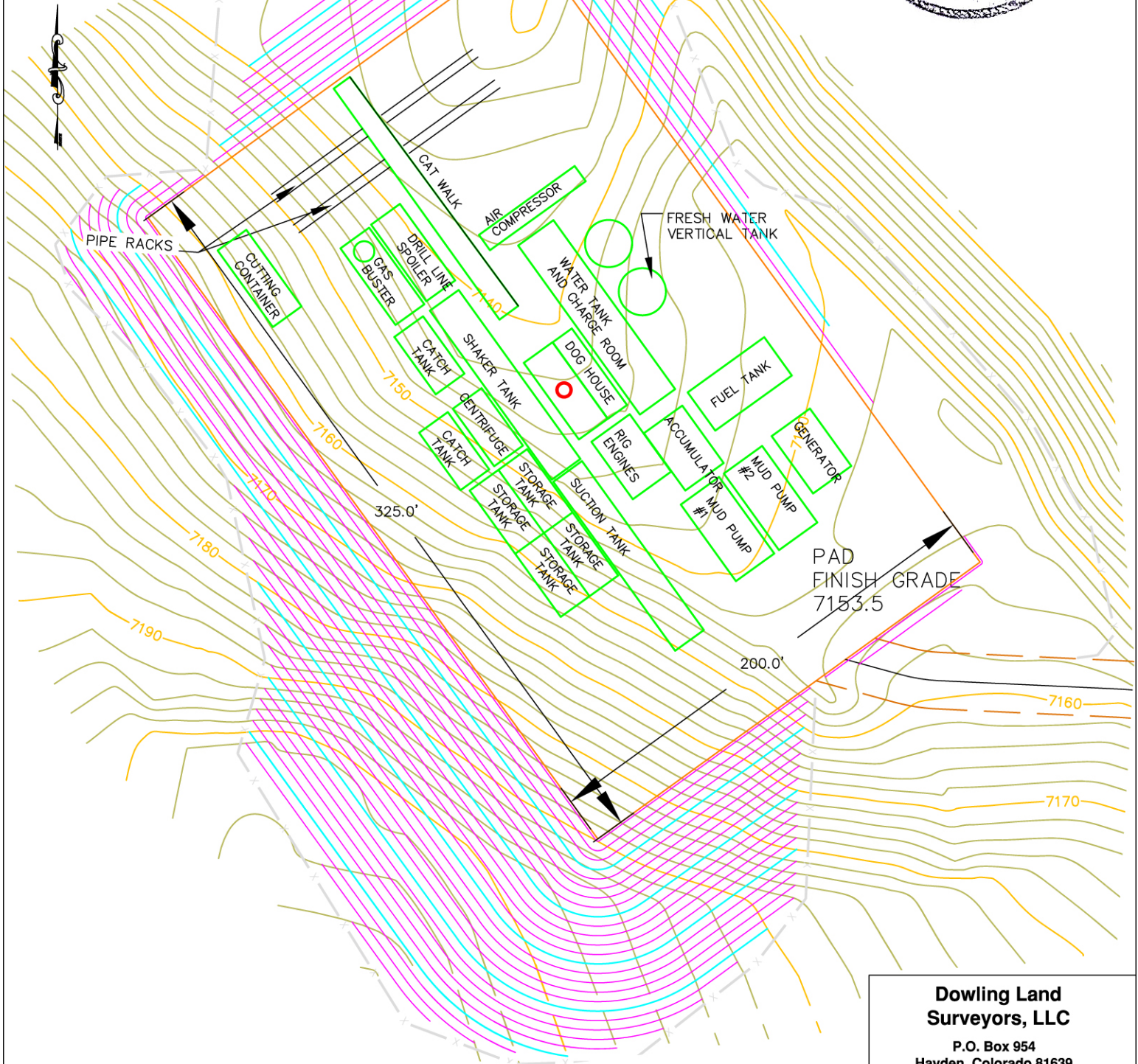
P.O. Box 954  
Hayden, Colorado 81639  
(970)-276-3613  
dowling@plotz.biz

Horizontal Scale  
1" = 100'

FIGURE 2  
Revisions: \_\_\_\_\_  
DATE: 11-20-2012  
JOB NO. 1208-019



PEAKVIEW OPERATING COMPANY, LLC  
GRASSY CREEK 13-26 WELL LAYOUT  
NW ¼ SW ¼ SECTION 26,  
T6N, R87W, 6TH P.M.,  
ROUTT COUNTY, COLORADO



NOTES:

- 1) WELL LOCATED IN THE NW ¼ SW ¼ OF SECTION 26, TOWNSHIP 6 NORTH, RANGE 87 WEST, 6TH P.M., ROUTT COUNTY, COLORADO.
- 2) 886 FEET FROM WEST LINE OF SECTION 26, 1968 FEET FROM THE SOUTH LINE OF SECTION 26, T6N, R87W.
- 3) PEAKVIEW OPERATING COMPANY, LLC., 216 SIXTEENTH STREET, SUITE 1450, DENVER, CO 80202

**Dowling Land  
Surveyors, LLC**

P.O. Box 954  
Hayden, Colorado 81639  
(970)-276-3613  
dowling@plotz.biz

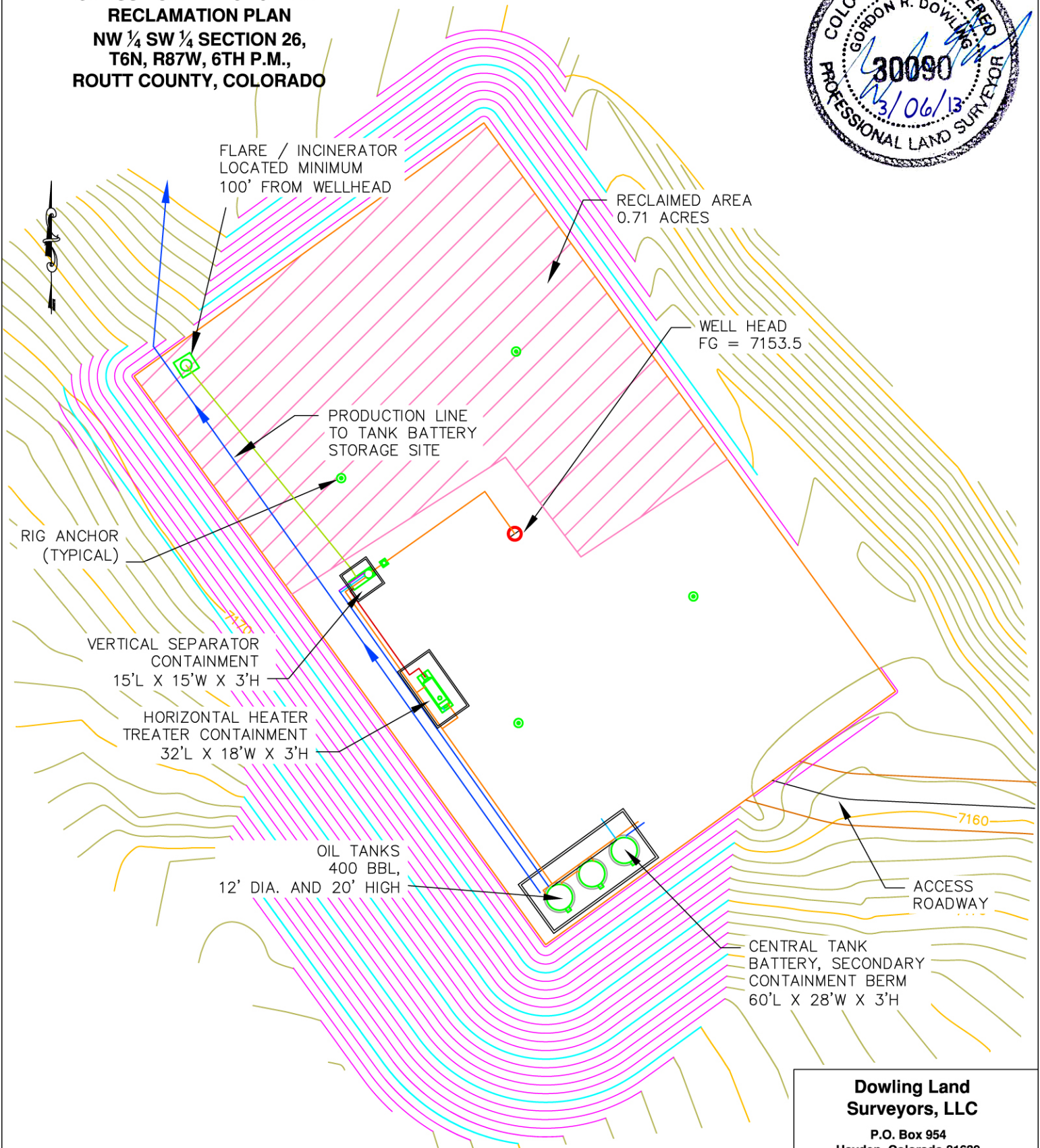
Horizontal Scale  
1" = 60'

FIGURE 3

Revisions:  
DATE: 02 - 18 - 2013  
JOB NO. 1208-019



**PEAKVIEW OPERATING COMPANY, LLC  
GRASSY CREEK 13-26 WELL  
RECLAMATION PLAN  
NW ¼ SW ¼ SECTION 26,  
T6N, R87W, 6TH P.M.,  
ROUTT COUNTY, COLORADO**



**NOTES:**

- 1) WELL LOCATED IN THE NW ¼ SW ¼ OF SECTION 26, TOWNSHIP 6 NORTH, RANGE 87 WEST, 6TH P.M., ROUTT COUNTY, COLORADO.
- 2) 886 FEET FROM WEST LINE OF SECTION 26, 1968 FEET FROM THE SOUTH LINE OF SECTION 26, T6N, R87W.
- 3) PEAKVIEW OPERATING COMPANY, LLC., 216 SIXTEENTH STREET, SUITE 1450, DENVER, CO 80202

**Dowling Land  
Surveyors, LLC**

P.O. Box 954  
Hayden, Colorado 81639  
(970)-276-3613  
dowling@plotz.biz

**Horizontal Scale**  
1" = 60'

**FIGURE 4**

Revisions: 3-6-2013  
DATE: 11-20-2012  
JOB NO. 1208-019