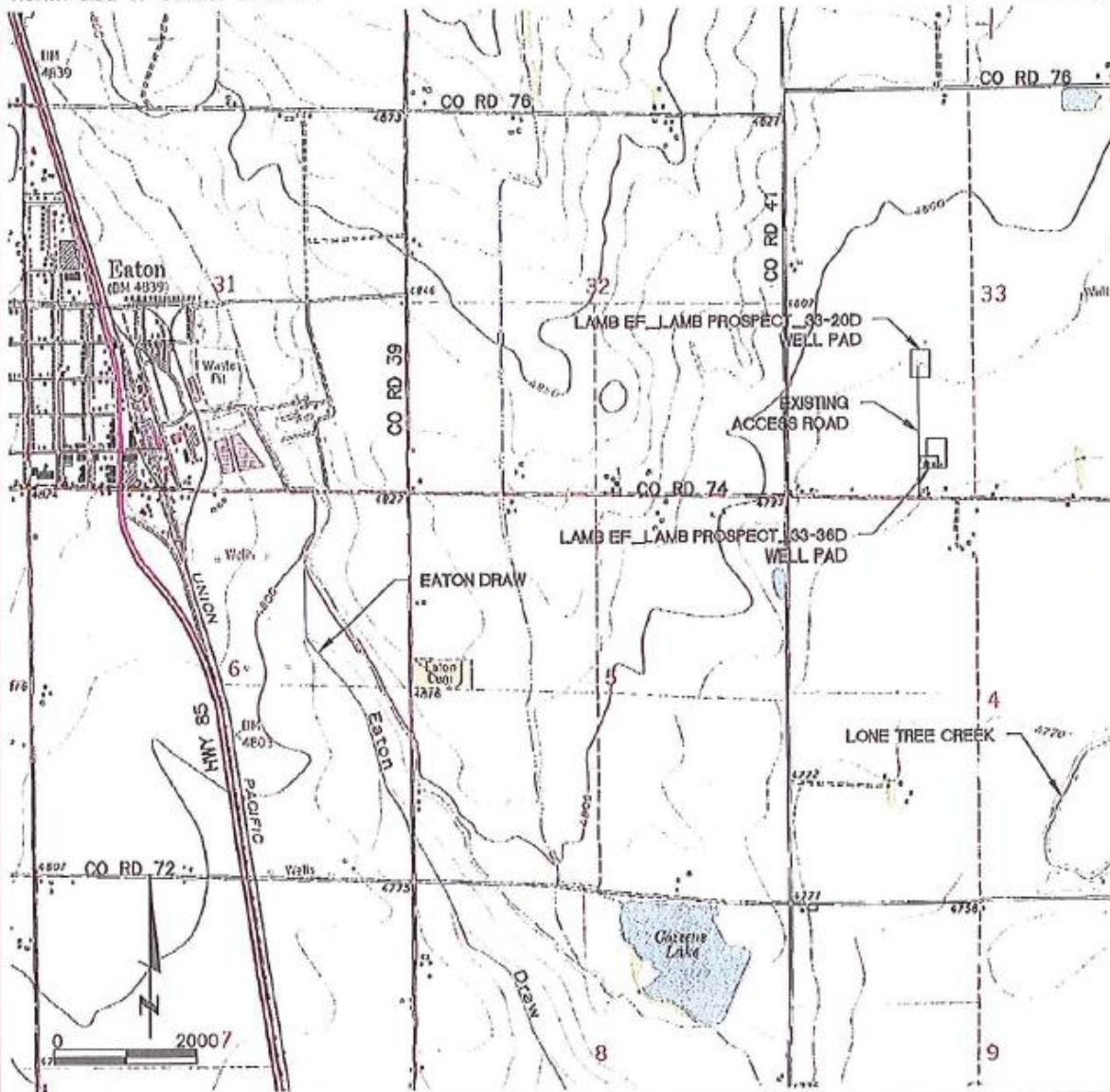


**OPERATOR**  
 GREAT WESTERN OIL & GAS COMPANY, LLC  
 1700 BROADWAY SUITE 650  
 DENVER, CO 80290  
 (303) 830-9893

**ACCESS ROAD DIRECTIONS**

FROM THE INTERSECTION OF HIGHWAY 85 AND COUNTY ROAD 74, TRAVEL EAST APPROXIMATELY 2 MILES. EXISTING OIL AND GAS ACCESS ROAD WILL BE ON THE NORTH SIDE OF COUNTY ROAD 74.



**LAMP RYNEARSON  
 & ASSOCIATES**

4715 Innovation Drive 970.226.0342 | P  
 Fort Collins, CO 80525 970.226.0879 | F  
 www.LRA-inc.com

**LAMB EF\_LAMB PROSPECT  
 33-36D  
 ACCESS ROAD MAP**

drawn by  
 SSZ

date  
 2/1/2013

cogeco id

project - task number  
 0213013.01

book and page  
 0213013 2-15

surface - location  
 SE/4 SW/4 SEC 33 T7N R65W

path\\filonemo P:\Engineering\0213013.01\DRAWINGS\EXHIBITS\Access Road Map.dwg