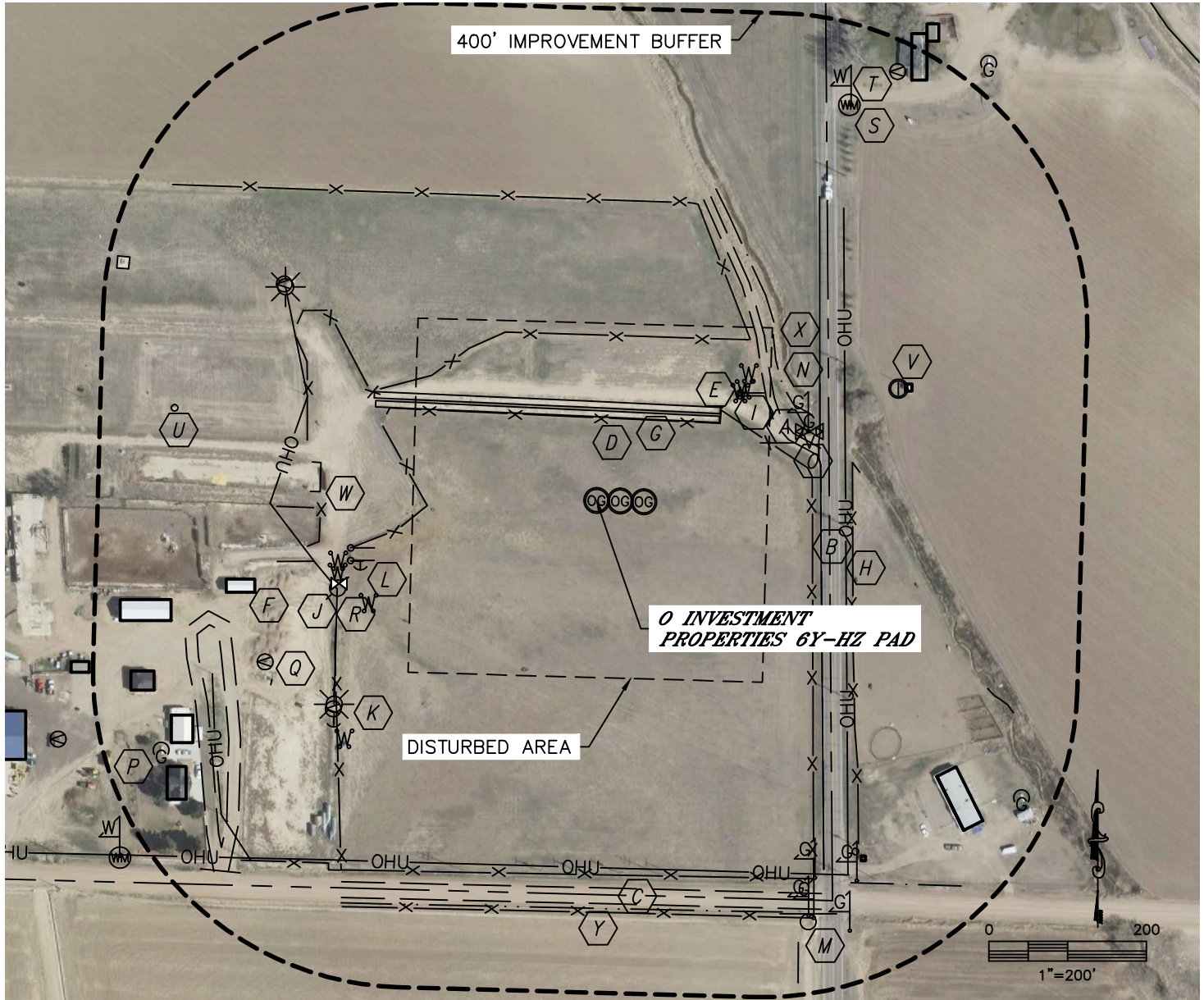




LOCATION DRAWING

SECTION: 6
TOWNSHIP: 6N
RANGE: 65W

O INVESTMENT PROPERTIES 6Y-HZ PAD



IMPROVEMENTS:

(MEASURED FROM THE O INVESTMENT PROPERTIES 6T-421 WELL LOCATION)

- | | | |
|---|---|--|
| A FIELD ROAD 247' NE, 491' SW | I POST 228' NE, 235' NE, 252' NE, 317' SW, 337' SW, 341' SW, 440' SW | Q SPIGOT 426' SW, 468' SW, 483' NE, 666' NE |
| B COUNTY ROAD 39 285' E | J POWER POLE 347' SW | R WATER VALVE 343' SW |
| C COUNTY ROAD 72 492' S | K LIGHT POLE 422' SW, 478' NW | S WATER METER 596' NE |
| D FENCE 105' N, 210' N, 395' N, 215' W, 274' E, 375' NW, 475' S, 523' S | L GUY WIRE 309' SW, 440' SW | T WATER MARKER 598' NE |
| E GATE 228' NE, 318' SW | M SIGN 590' SE | U WATER TANK 544' NW |
| F BUILDING (DWELLING) 556' SE, 622' SW, 667' NE, (OUT-BUILDING) 445' SW, 554' SW, 580' SW, 620' SW | N GAS MARKER 283' NE, 554' SE, 584' SE, 592' SE, 596' SE, 634' SE | V IRRIGATION WELL 409' NE
PUMP HOUSE 416' NE |
| G CONCRETE PAD 106' N, 118' N, 475' SW, 663' NW | O GAS VALVE 284' NE | W SILAGE PIT 351' W |
| H OVERHEAD UTILITY LINE 316' E, 348' SW, 535' SW, 390' NW, 466' S | P PROPANE TANK 637' SW, 659' SE | X DITCH 295' NE, 551' SE, 583' SE, 617' SE |
| | | Y BARROW DITCH 518' S |

NEAREST: BUILDING 445' SW (OUT-BUILDING), PUBLIC ROAD 285' E (CR 36),
ABOVE GROUND UTILITY 316' E, RAILROAD 1950' SW, PROPERTY LINE 296' E

DATE: 1/15/2013
PROJECT#: 2012160