

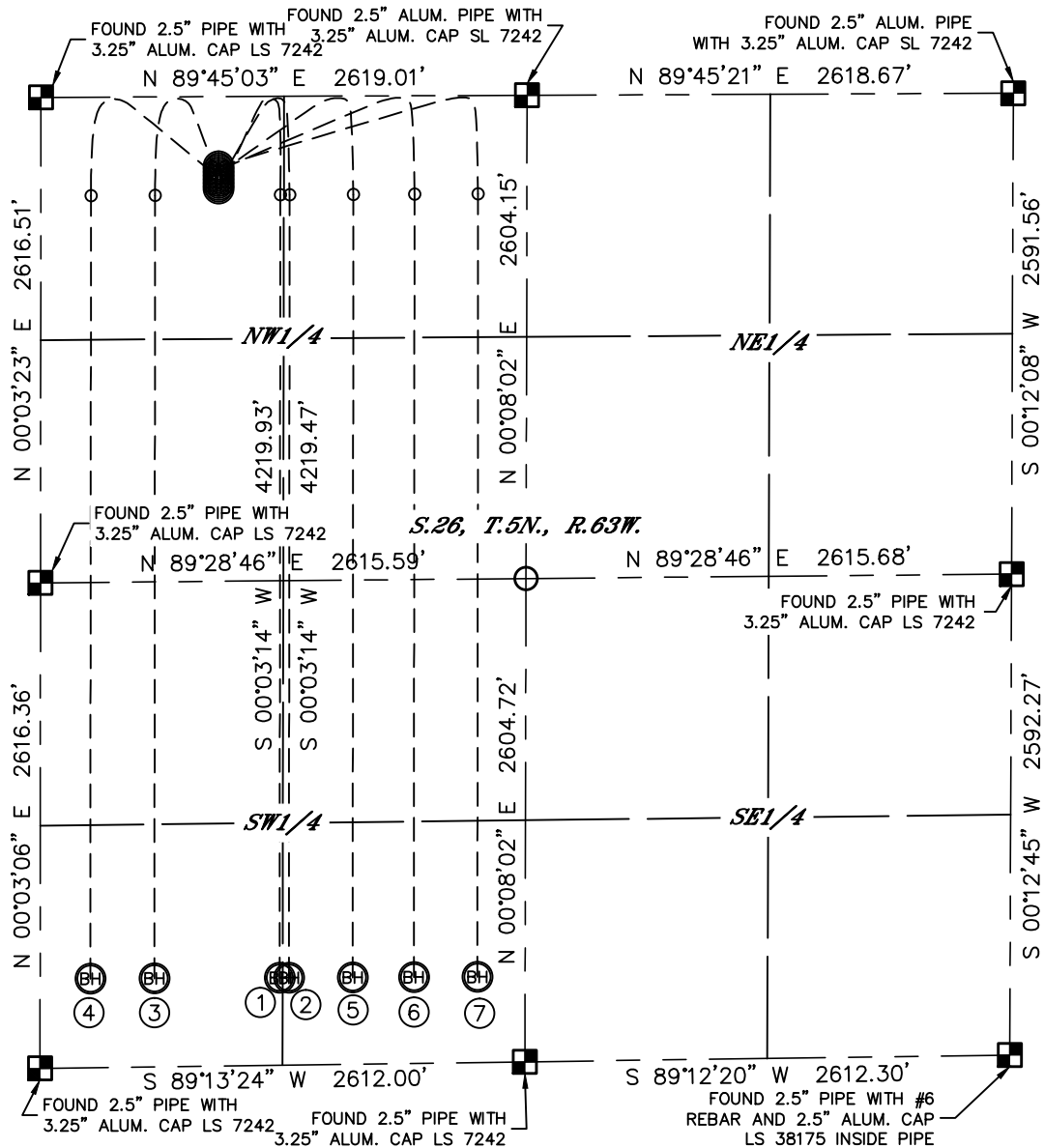


Lat40°, Inc. 1635 Foxtrail Drive, Suite 325 Loveland, CO 970-776-3321

## MULTI-WELL PLAN

STATE NORTH PLATTE F-26 PAD  
THIS MAP DOES NOT REPRESENT A BOUNDARY SURVEY

SECTION: 26  
TOWNSHIP: 5N  
RANGE: 63W



①

—SURFACE LOCATION—  
STATE NORTH PLATTE  
F-J-26HNB  
497' FNL  
956' FWL  
LAT: 40.37613°N  
LONG: 104.40901°W

②

—SURFACE LOCATION—  
STATE NORTH PLATTE  
F-J-26HC  
477' FNL  
956' FWL  
LAT: 40.37618°N  
LONG: 104.40901°W

③

—SURFACE LOCATION—  
STATE NORTH PLATTE  
A3-26  
457' FNL  
956' FWL  
LAT: 40.37624°N  
LONG: 104.40901°W

④

—SURFACE LOCATION—  
STATE NORTH PLATTE  
A4-26  
437' FNL  
956' FWL  
LAT: 40.37629°N  
LONG: 104.40901°W

⑤

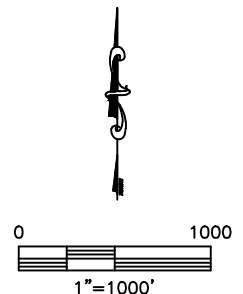
—SURFACE LOCATION—  
STATE NORTH PLATTE  
A5-26  
417' FNL  
956' FWL  
LAT: 40.37635°N  
LONG: 104.40901°W

⑥

—SURFACE LOCATION—  
STATE NORTH PLATTE  
A6-26  
397' FNL  
956' FWL  
LAT: 40.37640°N  
LONG: 104.40901°W

⑦

—SURFACE LOCATION—  
STATE NORTH PLATTE  
A7-26  
377' FNL  
956' FWL  
LAT: 40.37646°N  
LONG: 104.40901°W



DATE: rev.2/22/2013  
PROJECT#: 2012178



Lat40°, Inc. 1635 Foxtrail Drive, Suite 325 Loveland, CO 970-776-3321

MULTI-WELL PLAN  
STATE NORTH PLATTE F-26 PAD

SECTION: 26  
TOWNSHIP: 5N  
RANGE: 63W

