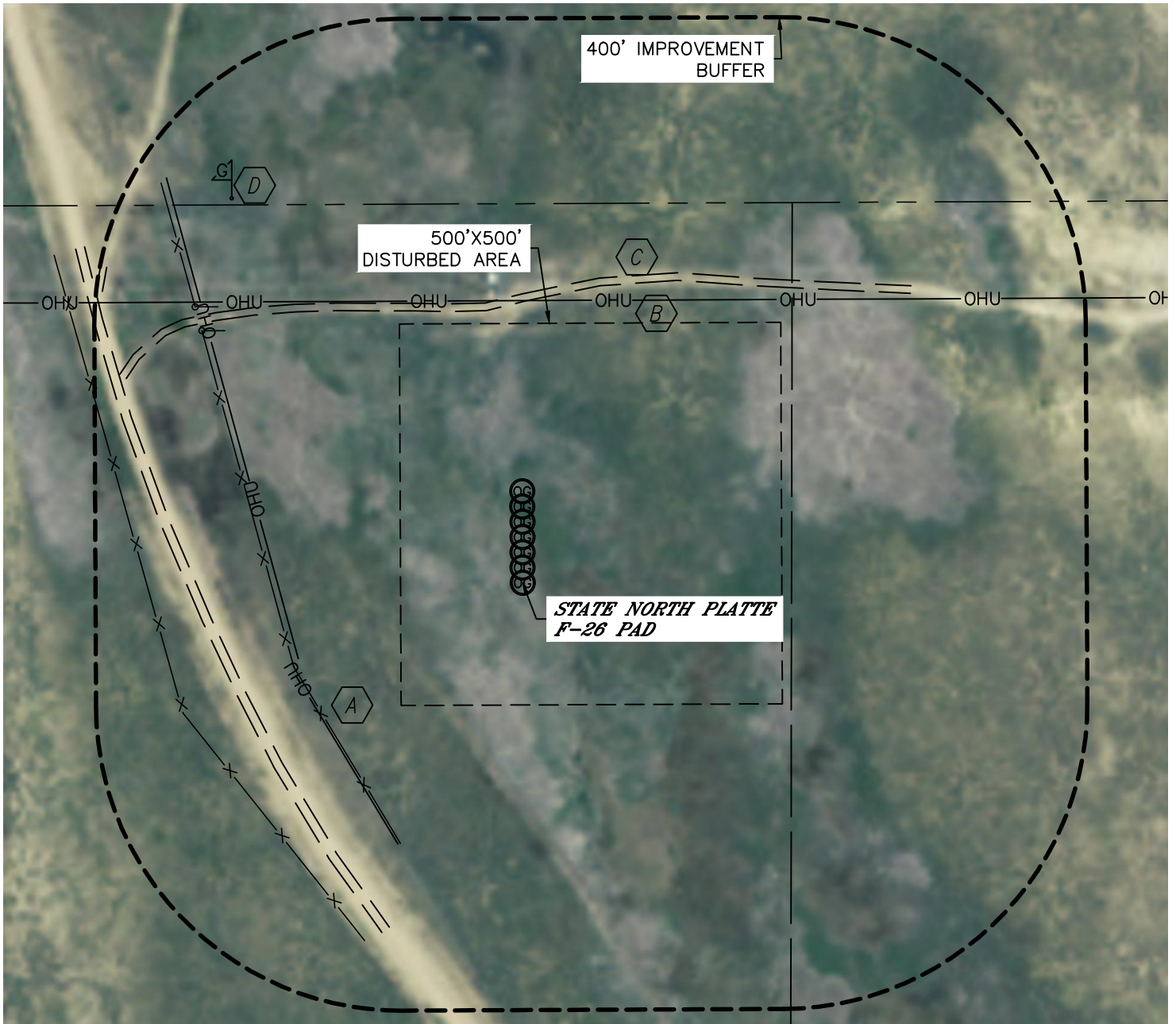




# LOCATION DRAWING



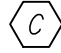

STATE NORTH PLATTE F-26 PAD

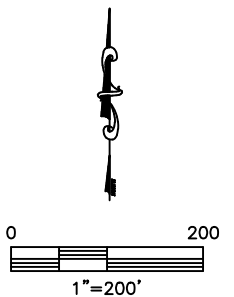
SECTION: 26  
TOWNSHIP: 5N  
RANGE: 63W



### IMPROVEMENTS:

(MEASURED FROM THE PROPOSED STATE NORTH PLATTE F-J-26HNB WELL LOCATION)

-  FENCE 314' & 454' SW
-  OVERHEAD UTILITY 317' SW, 370' N
-  GRAVEL ROAD 360' N, 388' SW
-  GAS MARKER 632' NW



NEAREST: BUILDING 3073' E (OFFICE), PUBLIC ROAD 4853' S,  
ABOVE GROUND UTILITY 317' SW, RAILROAD 5280' +, PROPERTY LINE 497' N

DATE: rev.2/22/2013  
PROJECT#: 2012178