

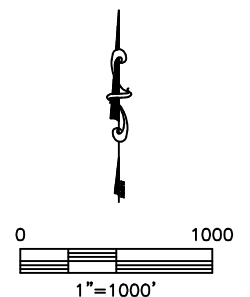
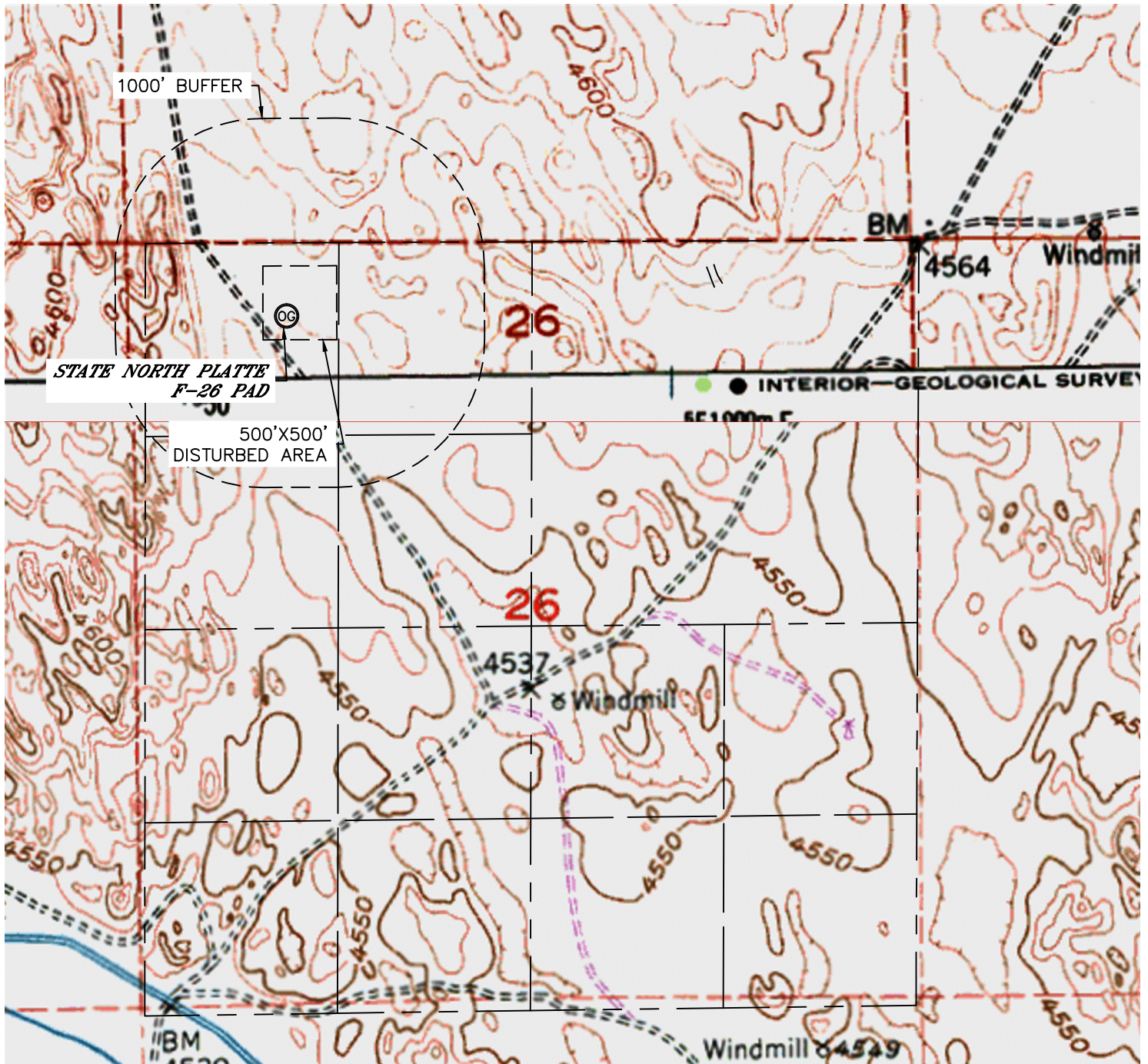


Lat40°, Inc. 1635 Foxtrail Drive, Suite 325 Loveland, CO 970-776-3321

# HYDROLOGY MAP

## STATE NORTH PLATTE F-26 PAD

SECTION: 26  
TOWNSHIP: 5N  
RANGE: 63W



NO VISIBLE SURFACE WATER WITHIN 1000'

DATE: 1/10/2013  
PROJECT#: 2012178