

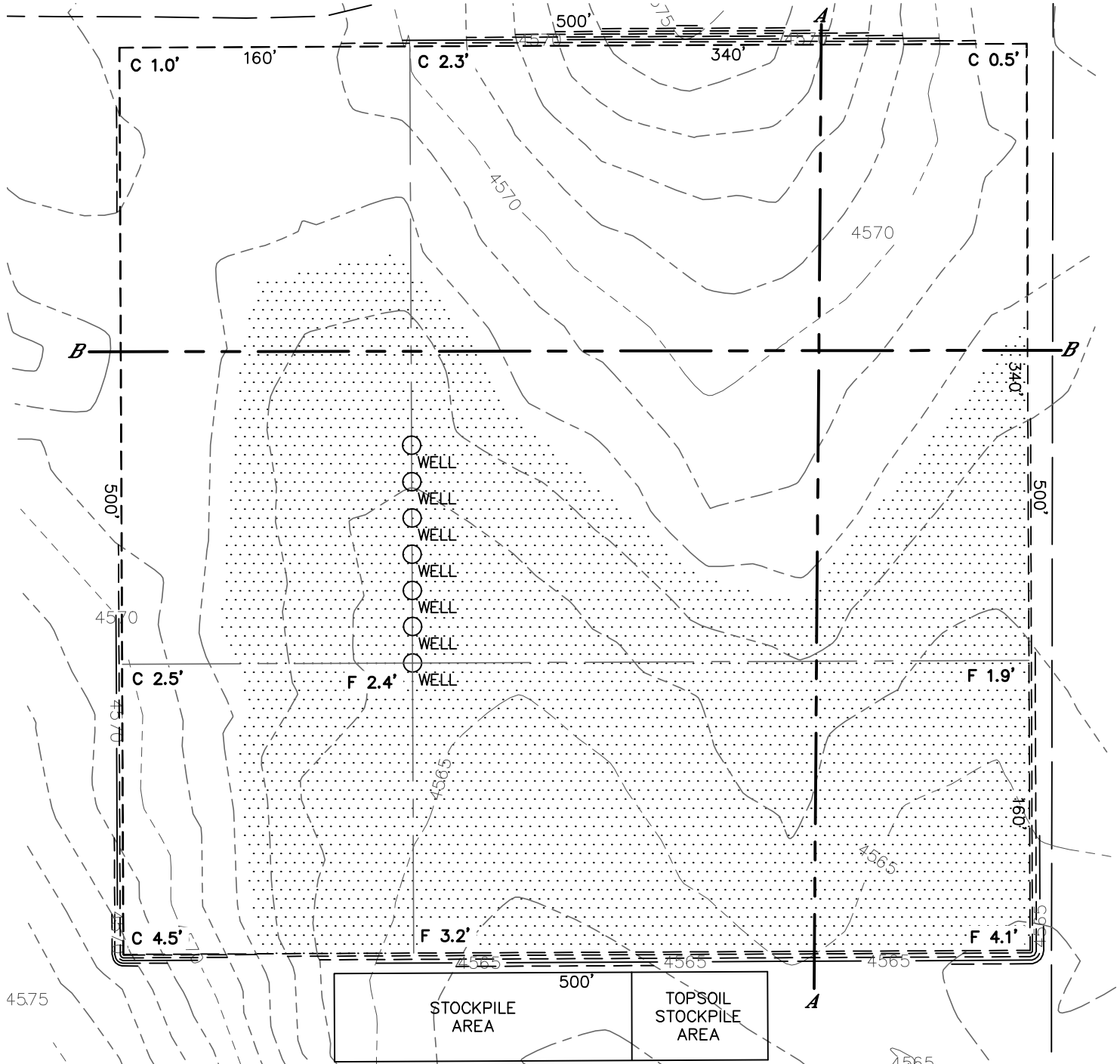


Lat40°, Inc. 1635 Foxtrail Drive, Suite 325 Loveland, CO 970-776-3321

# CUT & FILL DIAGRAM

STATE NORTH PLATTE F-26 PAD

SECTION: 26  
TOWNSHIP: 5N  
RANGE: 63W



**OPERATOR: BONANZA CREEK ENERGY, INC.**

**LOCATION: 497' FNL, 956' FWL**

**EXISTING ELEV=4565.3'**

**PROPOSED ELEV=4567.7'**

**DISTURBANCE= 5.9 ACRES**

**ESTIMATED EARTHWORK:**

**TOPSOIL= 9,581 CY**

**CUT= 8,705 CY**

**FILL= 8,695 CY**

**STOCKPILE:**

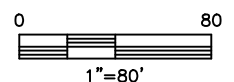
**EXCESS= 10 CY**

## NOTE:

- 1) Ground elevations are based on an observed GPS elevation (NAVD 1988 DATUM).
- 2) No allowance has been made for soil expansion or compaction.
- 3) Proposed elevation does not account for top soil removal.
- 4) Top soil volume assumes 12" depth across entire location.
- 5) Fill slopes 2:1
- 6) Cut slopes 1.5:1

## LEGEND

EX. CONTOUR	---
PRO. CONTOUR	- - -
FILL AREA	



DATE: 1/10/2013  
PROJECT#: 2012178

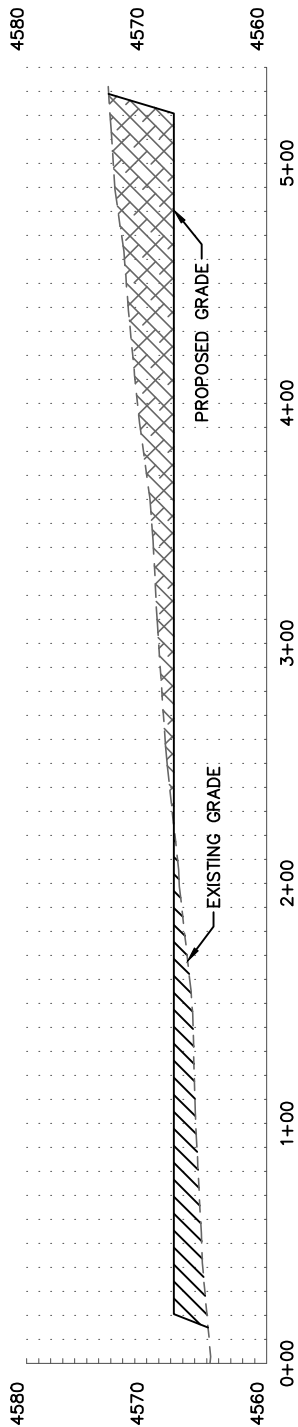


Lat40°, Inc. 1635 Foxtrail Drive, Suite 325 Loveland, CO 970-776-3321

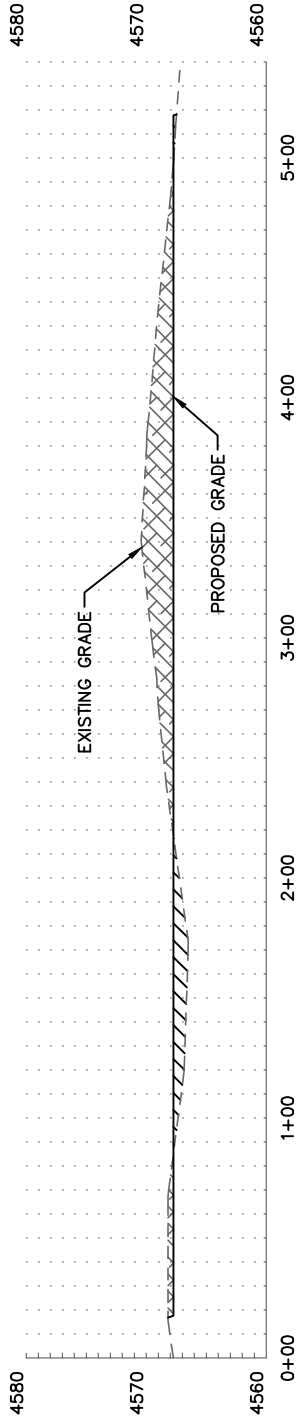
# CROSS SECTION DIAGRAM

STATE NORTH PLATTE F-26 PAD

SECTION: 26  
TOWNSHIP: 5N  
RANGE: 63W



A-A



B-B

HORIZONTAL SCALE: 1"=80', VERTICAL SCALE: 1"=20'