

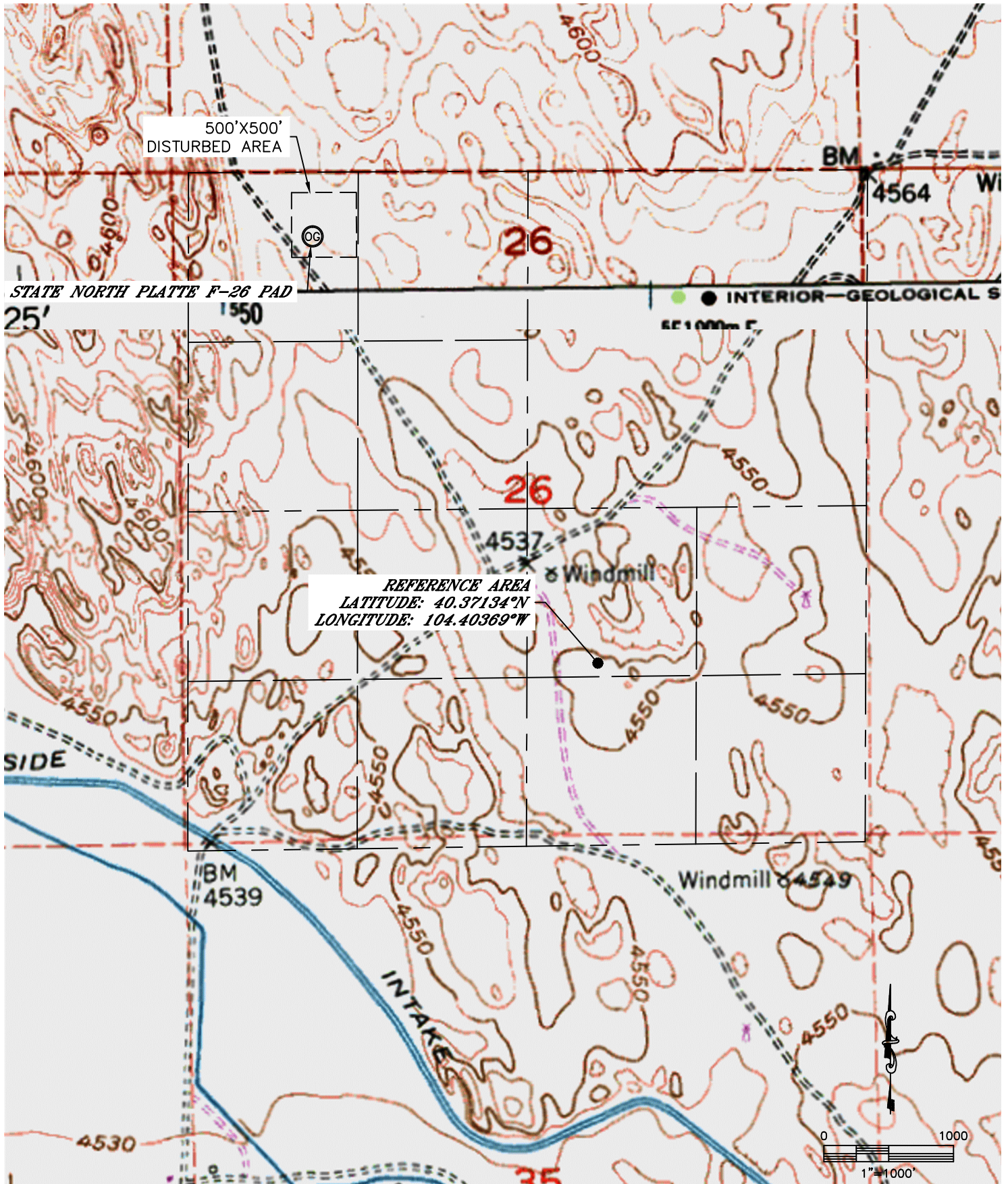


Lat40°, Inc. 1635 Foxtrail Drive, Suite 325 Loveland, CO 970-776-3321

# REFERENCE AREA MAP

STATE NORTH PLATTE F-26 PAD

SECTION: 26  
TOWNSHIP: 5N  
RANGE: 63W



DATE: 1/10/2013  
PROJECT#: 2012178