



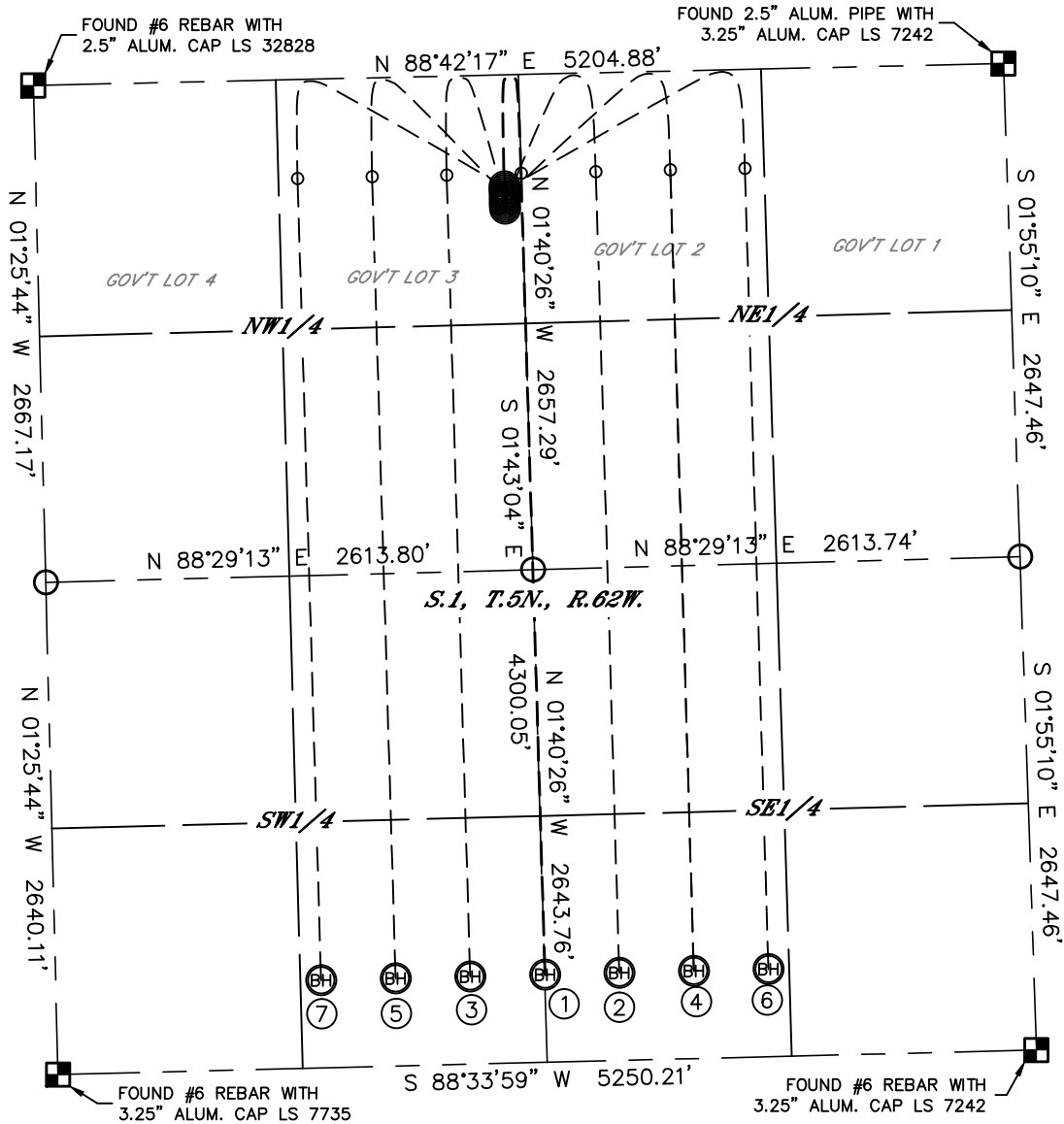
Lat40°, Inc. 1635 Foxtrail Drive, Suite 325 Loveland, CO 970-776-3321

MULTI-WELL PLAN

STATE ANTELOPE K-1 PAD

THIS MAP DOES NOT REPRESENT A BOUNDARY SURVEY

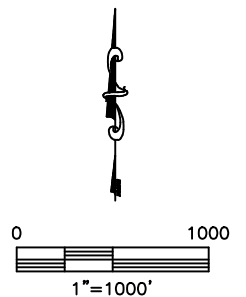
SECTION: 1
TOWNSHIP: 5N
RANGE: 62W



- | | | | |
|--|--|--|--|
| ① -SURFACE LOCATION- STATE ANTELOPE K-O-1HNB 718' FNL 2512' FWL LAT: 40.43537°N LONG: 104.27187°W | ② -SURFACE LOCATION- STATE ANTELOPE A2-01 698' FNL 2512' FWL LAT: 40.43542°N LONG: 104.27187°W | ③ -SURFACE LOCATION- STATE ANTELOPE A3-01 678' FNL 2512' FWL LAT: 40.43548°N LONG: 104.27187°W | ④ -SURFACE LOCATION- STATE ANTELOPE A4-01 658' FNL 2512' FWL LAT: 40.43553°N LONG: 104.27187°W |
| ⑤ -SURFACE LOCATION- STATE ANTELOPE A5-01 638' FNL 2512' FWL LAT: 40.43559°N LONG: 104.27187°W | ⑥ -SURFACE LOCATION- STATE ANTELOPE A6-01 618' FNL 2513' FWL LAT: 40.43564°N LONG: 104.27187°W | ⑦ -SURFACE LOCATION- STATE ANTELOPE A7-01 598' FNL 2513' FWL LAT: 40.43570°N LONG: 104.27187°W | |

LEGEND

- = ALIQUOT MONUMENT AS DESCRIBED
- = CALCULATED POSITION



DATE: rev.3/6/2013
PROJECT#: 2012072



MULTI-WELL PLAN
STATE ANTELOPE K-1 PAD

SECTION: 1
TOWNSHIP: 5N
RANGE: 62W

