

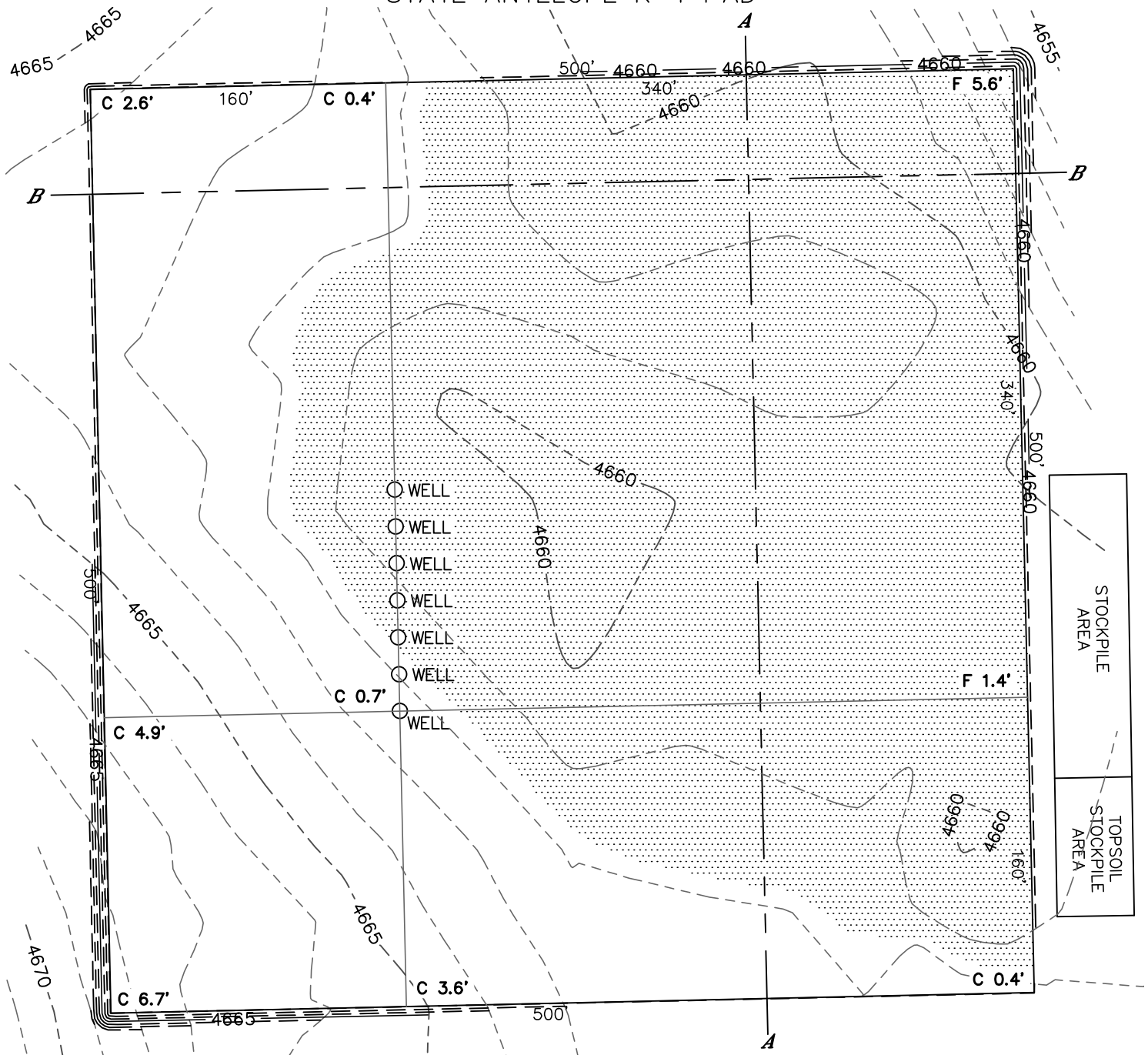


Lat40°, Inc. 1635 Foxtrail Drive, Suite 325 Loveland, CO 970-776-3321

## CUT & FILL DIAGRAM

STATE ANTELOPE K-1 PAD

SECTION: 1  
TOWNSHIP: 5N  
RANGE: 62W



**OPERATOR: BONANZA CREEK ENERGY, INC.**

**LOCATION: 718 FNL, 2512 FWL**

**EXISTING ELEV= 4662.5'**

**PROPOSED ELEV= 4661.8'**

**DISTURBANCE= 5.9 ACRES**

**ESTIMATED EARTHWORK:**

**TOPSOIL= 9,581 CY**

**CUT= 7,055 CY**

**FILL= 7,047 CY**

**STOCKPILE:**

**EXCESS= 8 CY**

### NOTE:

- 1) Ground elevations are based on an observed GPS elevation (NAVD 1988 DATUM).
- 2) No allowance has been made for soil expansion or compaction
- 3) Proposed elevation does not account for top soil removal.
- 4) Top soil volume assumes 12" depth across entire location.
- 5) Fill slopes 2:1
- 6) Cut slopes 1.5:1

### LEGEND

EX. CONTOUR	---
PRO. CONTOUR	- - -
FILL AREA	



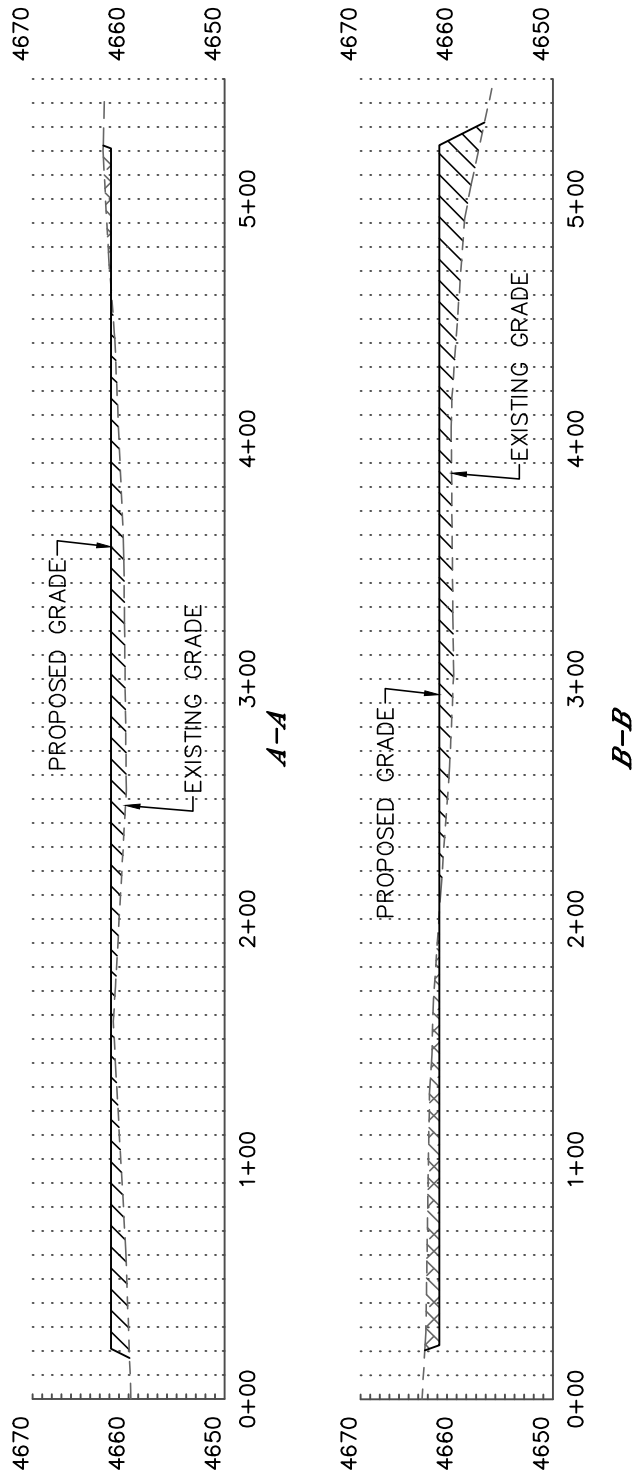
DATE: rev.3/6/2013  
PROJECT#: 2012072



# CROSS SECTION DIAGRAM

STATE ANTELOPE K-1 PAD

SECTION: 1  
TOWNSHIP: 5N  
RANGE: 62W



HORIZONTAL SCALE: 1"=80', VERTICAL SCALE: 1"=20'