

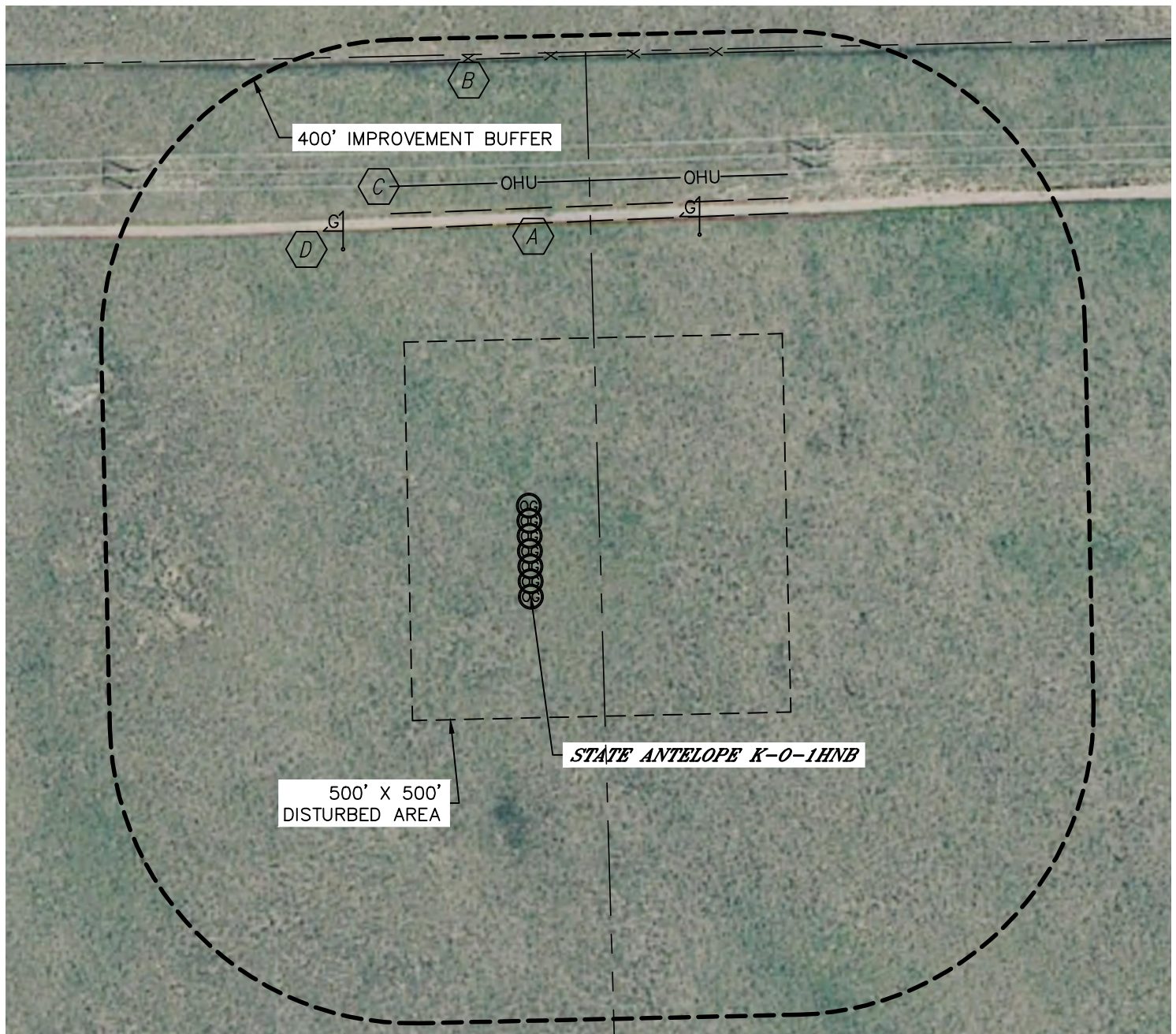


Lat40°, Inc. 1635 Foxtrail Drive, Suite 325 Loveland, CO 970-776-3321

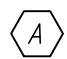

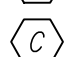
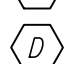
## LOCATION DRAWING

STATE ANTELOPE K-1 PAD

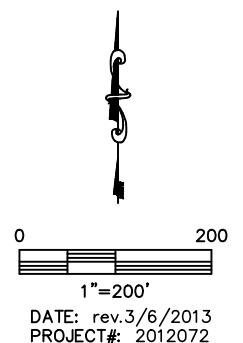
SECTION: 1  
TOWNSHIP: 5N  
RANGE: 62W



IMPROVEMENTS:  
(MEASURED FROM PROPOSED STATE ANTELOPE K-0-1HNB WELL LOCATION)

-  FIELD ROAD 503' N
-  FENCE 712' N
-  OVERHEAD UTILITY 547' N
-  GAS MARKER 522' NW, 528' NE

NEAREST: BUILDING 5280'+, PUBLIC ROAD 5280'+,  
ABOVE GROUND UTILITY 547' N, RAILROAD 5280'+, PROPERTY LINE 718' N



DATE: rev.3/6/2013  
PROJECT#: 2012072