

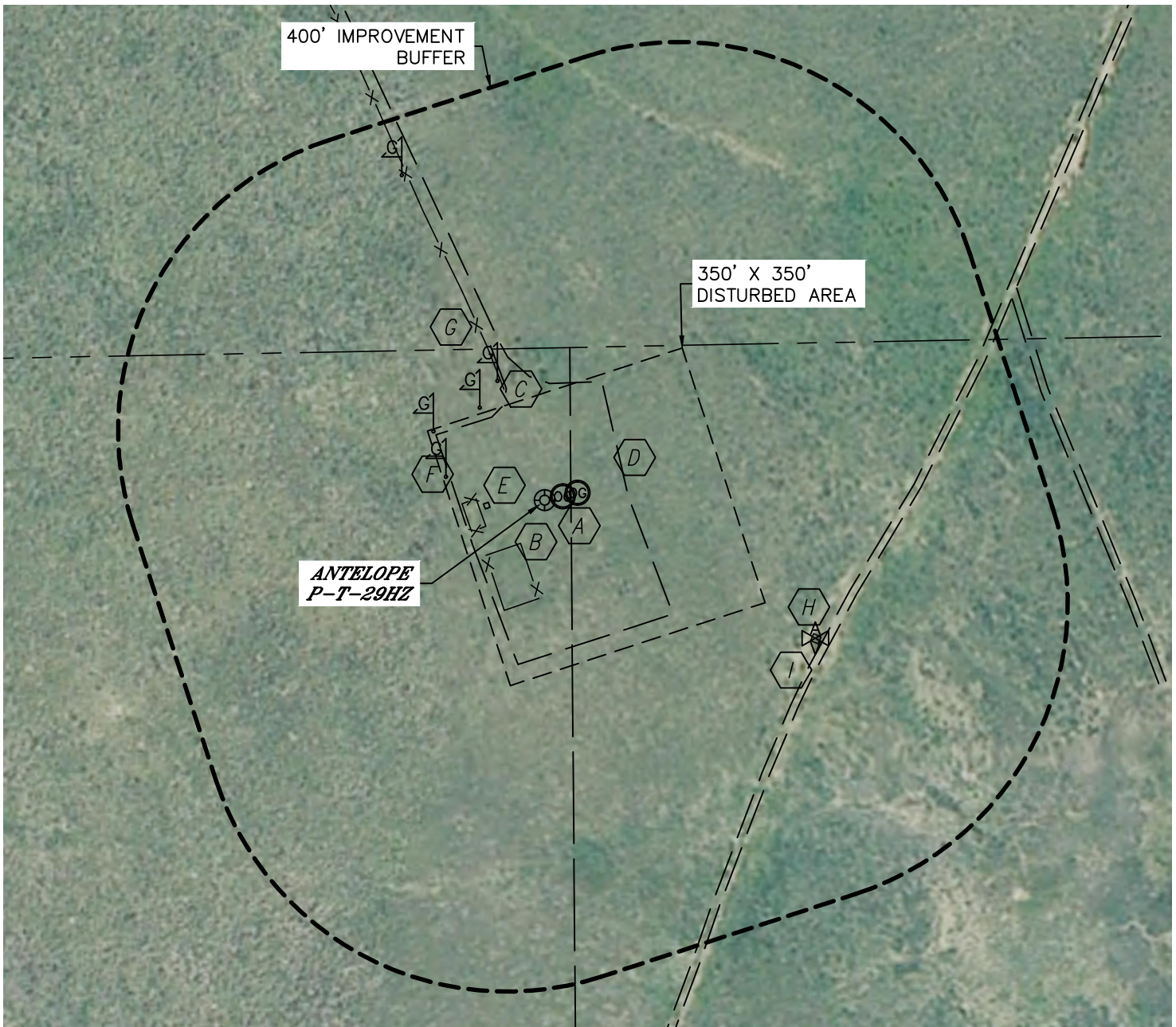


Lat40°, Inc. 1635 Foxtrail Drive, Suite 325 Loveland, CO 970-776-3321

## LOCATION DRAWING

ANTELOPE P-29 PAD

SECTION: 29  
TOWNSHIP: 5N  
RANGE: 62W

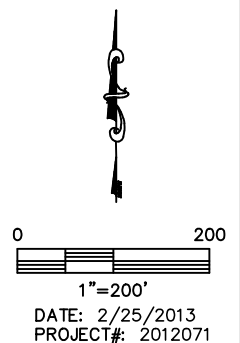


### IMPROVEMENTS:

(ALL MEASUREMENTS FROM EXISTING ANTELOPE P-T-29HZ LOCATION)

- |  |  |
|--|--|
| <b>A</b> PROPOSED WELL 20' & 40' NE                    | <b>F</b> GAS MARKER 137' W, 150' NW, 174' NW, 466' N |
| <b>B</b> EX. PRODUCTION EQUIPMENT 67' SW, 88' W        | <b>G</b> FENCE 156' N                                |
| <b>C</b> EX. ACCESS 216' N                             | <b>H</b> AIR VENT 393' SE                            |
| <b>D</b> EDGE OF GRAVEL 103' E, 112' W, 192' S, 131' N | <b>I</b> FIELD ROAD 408' SE                          |
| <b>E</b> BURNER 76' W                                  |  |

NEAREST: BUILDING 5280' +, PUBLIC ROAD 5280' +,  
ABOVE GROUND UTILITY 2003' NW, RAILROAD 5280' +, PROPERTY LINE 199' N



DATE: 2/25/2013  
PROJECT#: 2012071