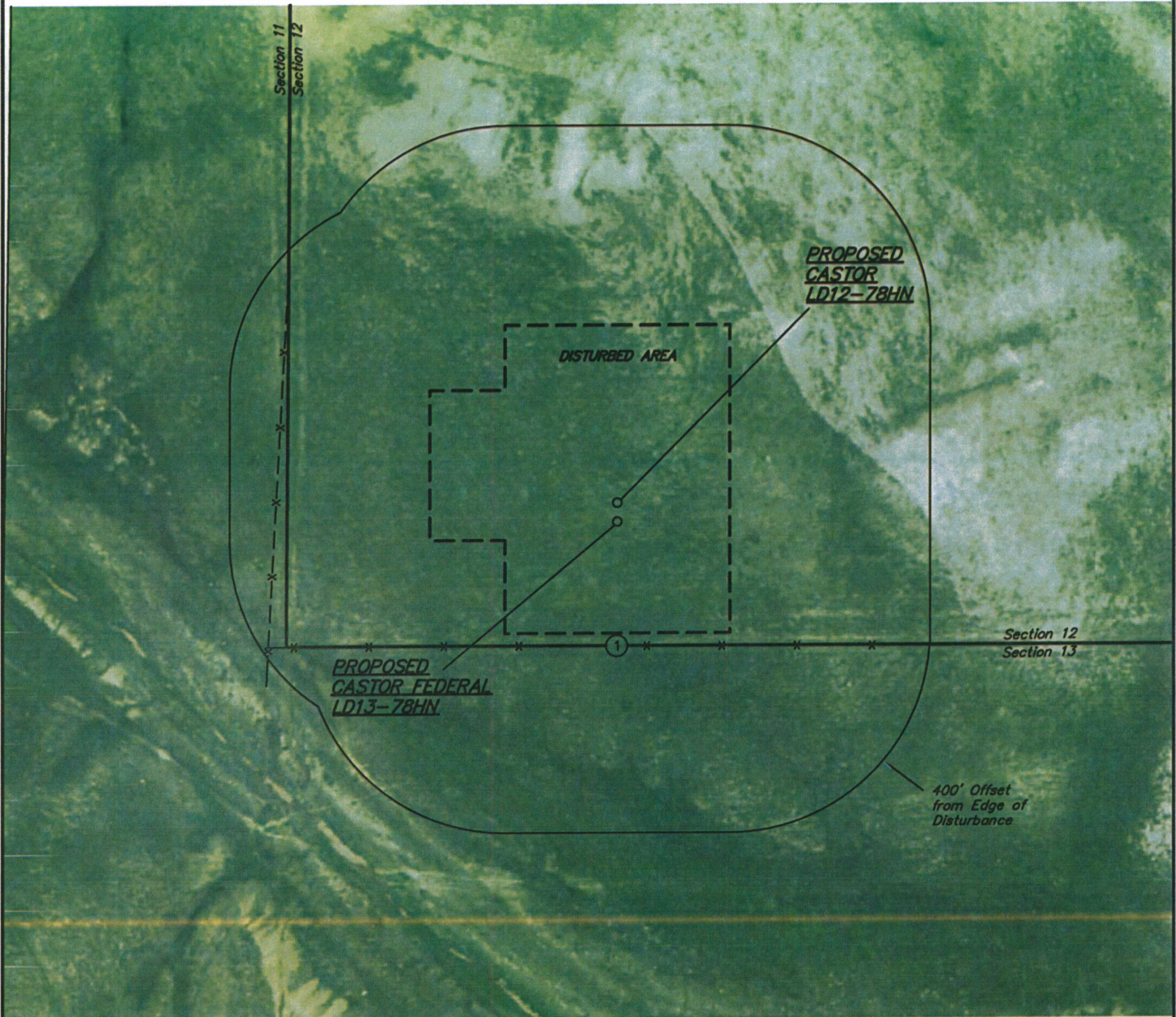


NOBLE ENERGY, INC.

LOCATION DRAWING

DATE: 10-04-12
DRAWN BY: H.K.W.

**CASTOR FEDERAL LD13-78HN & CASTOR LD12-78HN
SECTION 12, T9N, R58W, 6th P.M.**

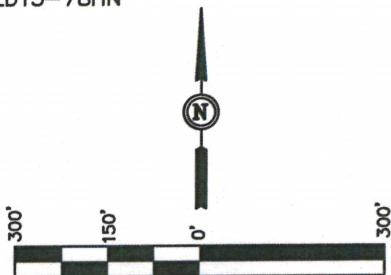


NOTE:
DIRECTION AND DISTANCE TO IMPROVEMENTS AND NEAREST FEATURES ARE FROM PROPOSED CASTOR FEDERAL LD13-78HN

IMPROVEMENTS:

- ① FENCE 250' S, 683' W

PAD DETAILS:
WELL HEAD SPACING = 37.5'



NEAREST FEATURE: BUILDING 5280' +, PUBLIC ROAD 5280' + (CR 127), ABOVE GROUND UTILITY 5280' +, RAILROAD 5280' +, PROPERTY LINE 250' S

UINTAH ENGINEERING & LAND SURVEYING
85 So. 200 East * Vernal, Utah 84078 * (435) 789-1017