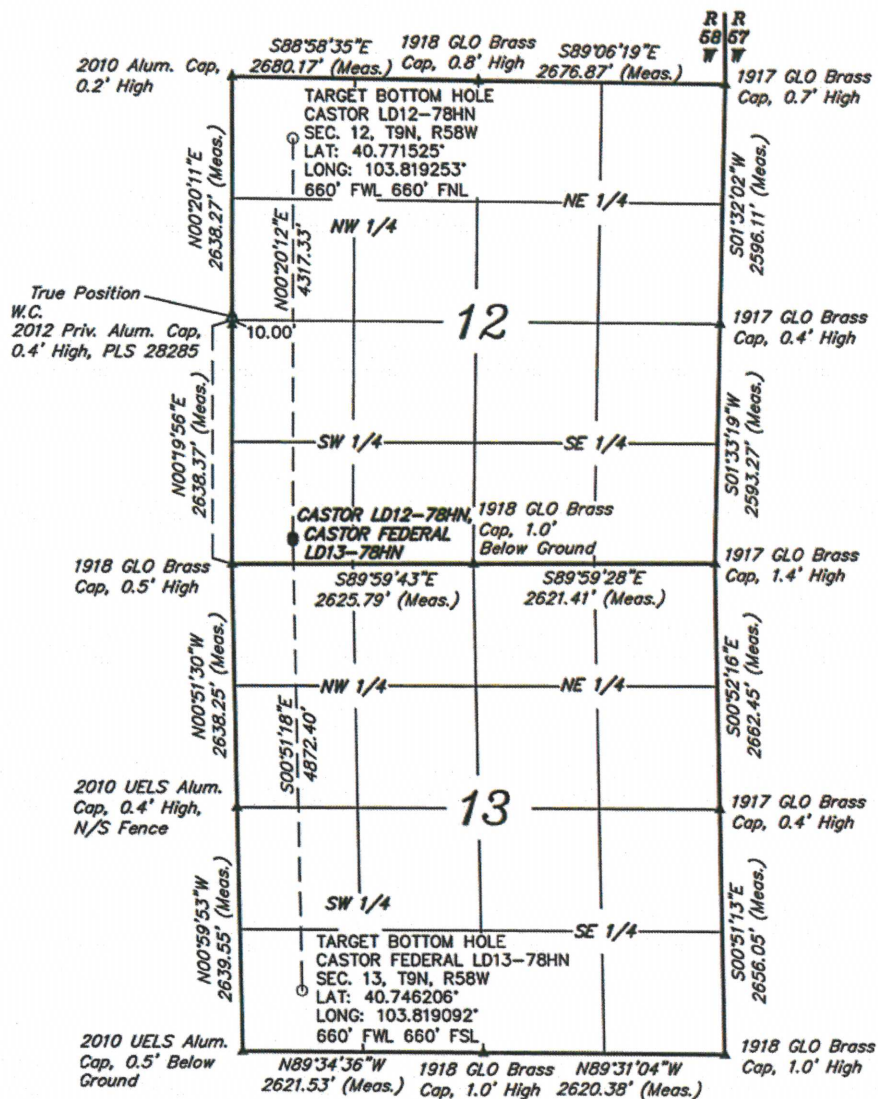


MULTI - WELL PLAN T9N, R58W, 6th P.M.



LEGEND:

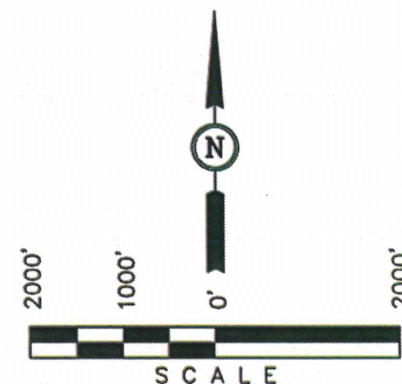
- \perp = 90° SYMBOL
- = PROPOSED WELL HEAD.
- ▲ = SECTION CORNERS LOCATED.
- △ = SECTION CORNERS RE-ESTABLISHED. (Not Set on Ground.)

NOBLE ENERGY, INC.

Well location, CASTOR FEDERAL LD13-78HN & CASTOR LD12-78HN, located as shown in the SW 1/4 SW 1/4 of Section 12, T9N, R58W, 6th P.M., Weld County, Colorado.

BASIS OF BEARINGS

BASIS OF BEARINGS IS A G.P.S. OBSERVATION.



UINTAH ENGINEERING & LAND SURVEYING
85 SOUTH 200 EAST - VERNAL, UTAH 84078
(435) 789-1017

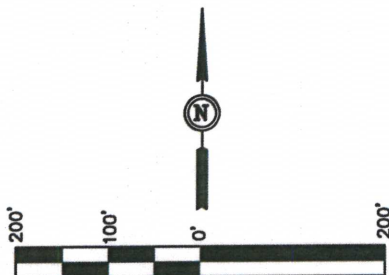
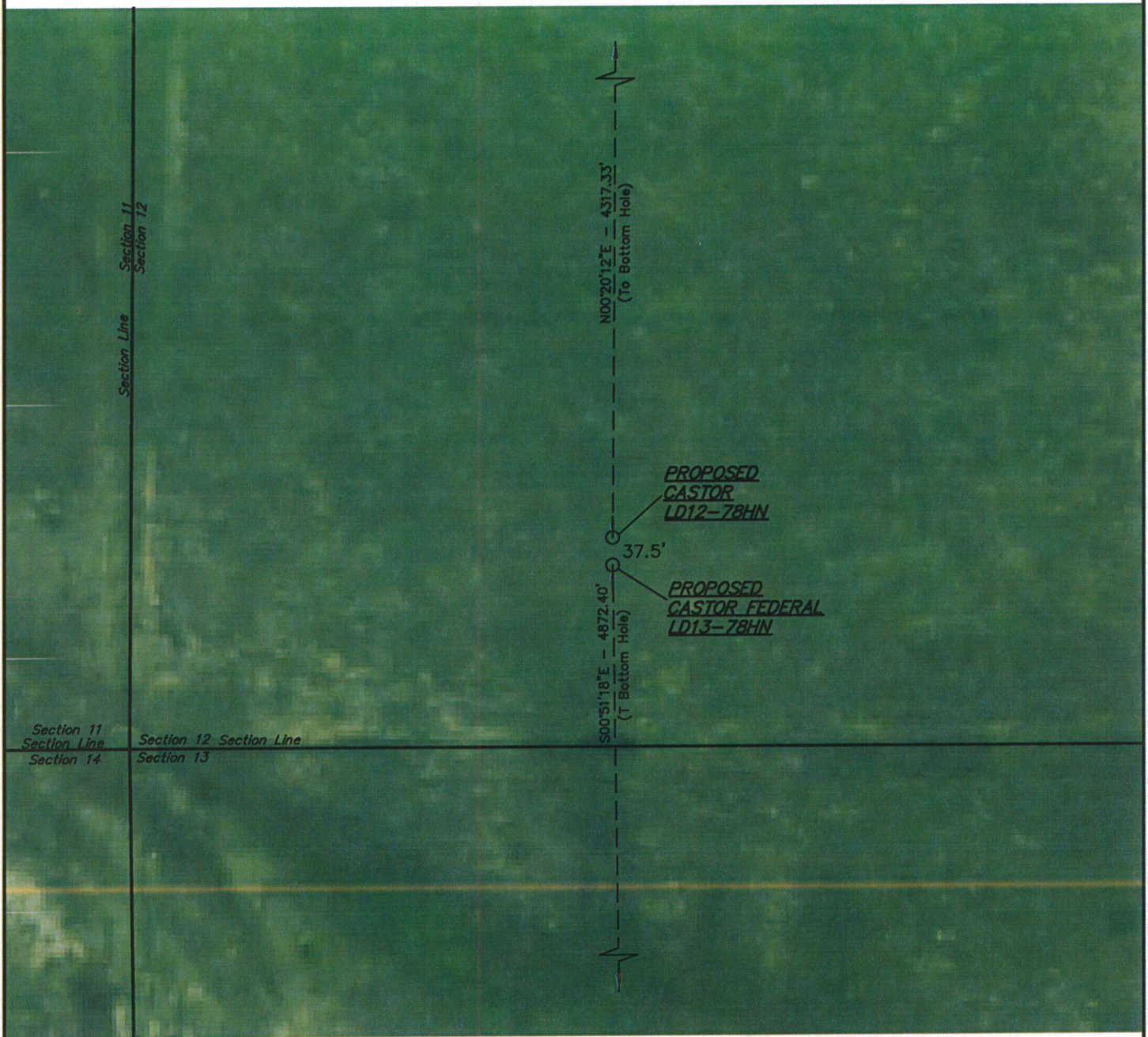
SCALE 1" = 2000'	DATE SURVEYED: 10-01-12	DATE DRAWN: 10-08-12
PARTY DALLAS NIELSEN C.C. H.K.W.	REFERENCES G.L.O. PLAT	
WEATHER WARM	FILE NOBLE ENERGY, INC.	

NOBLE ENERGY, INC.

MULTI-WELL PLAN

**CASTOR FEDERAL LD13-78HN & CASTOR LD12-78HN
SECTION 12, T9N, R58W, 6th P.M.**

DATE: 10-08-12
DRAWN BY: H.K.W.



PAD DETAILS:
WELL HEAD SPACING = 37.5'

UINTAH ENGINEERING & LAND SURVEYING
85 So. 200 East * Vernal, Utah 84078 * (435) 789-1017