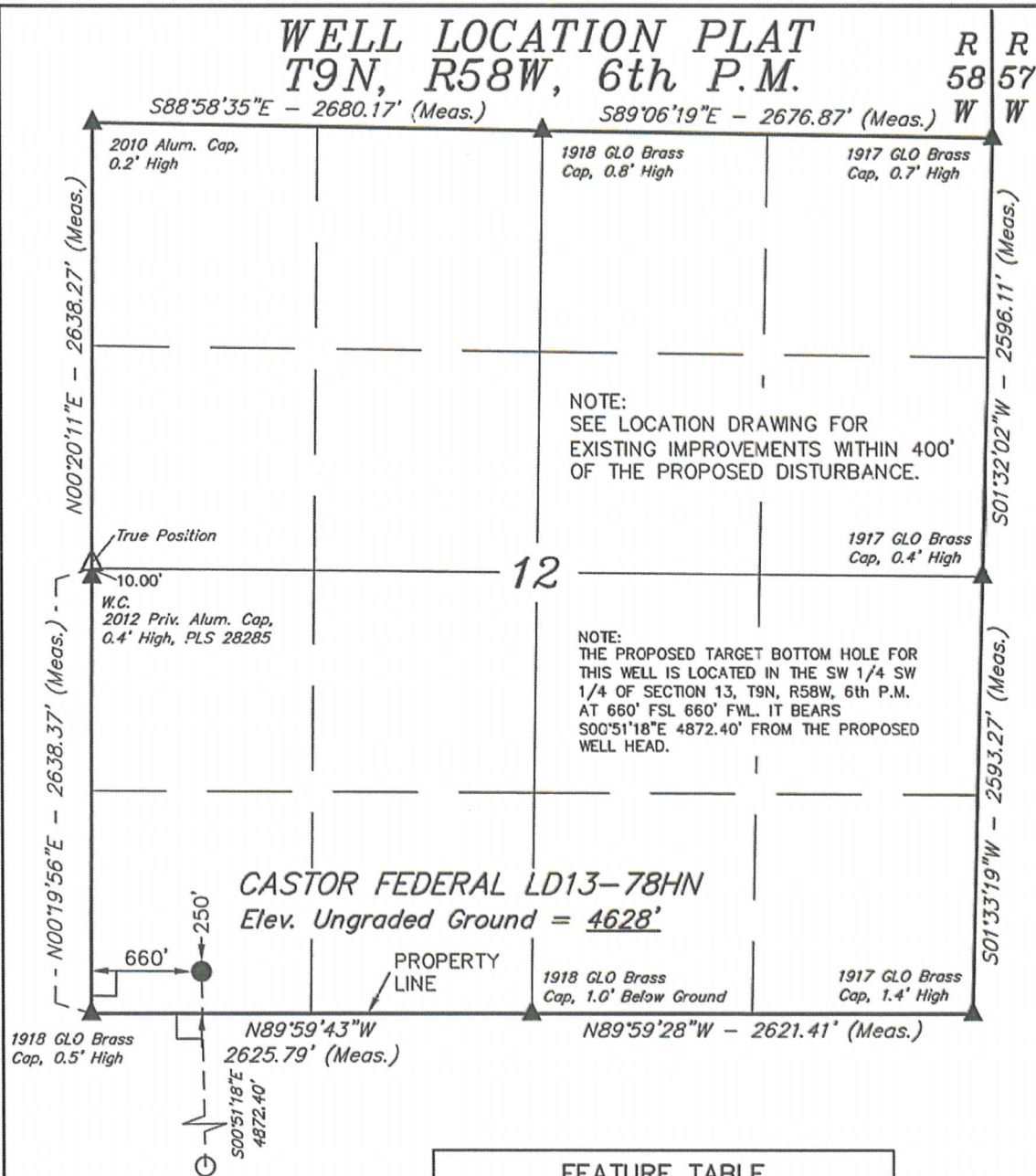


WELL LOCATION PLAT T9N, R58W, 6th P.M.



FEATURE TABLE		
EXISTING FEATURE	DIRECTION	LENGTH
PROPERTY LINE	SOUTH	250'

SHEET 1 OF 2

NAD 83 (SURFACE LOCATION)
LATITUDE = 40°45'34.47" (40.759575)
LONGITUDE = 103°49'09.65" (103.819347)

PDOP = 1.3

NOBLE ENERGY, INC.

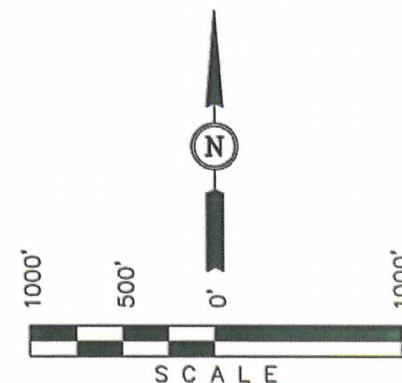
Well location, CASTOR FEDERAL LD13-78HN (SURFACE LOCATION), located as shown in the SW 1/4 SW 1/4 of Section 12, T9N, R58W, 6th P.M., Weld County, Colorado.

BASIS OF ELEVATION

SPOT ELEVATION LOCATED AT THE NORTHEAST CORNER OF SECTION 15, T9N, R58W, 6th P.M. TAKEN FROM THE GATEHOOK SPRING, QUADRANGLE, COLORADO, WELD COUNTY, 7.5 MINUTE QUAD (TOPOGRAPHIC MAP) PUBLISHED BY THE UNITED STATES DEPARTMENT OF THE INTERIOR, GEOLOGICAL SURVEY. SAID ELEVATION IS MARKED AS BEING 4679 FEET.

BASIS OF BEARINGS

BASIS OF BEARINGS IS A G.P.S. OBSERVATION.



CERTIFICATE

THIS IS TO CERTIFY THAT THE ABOVE PLAT WAS PREPARED FROM FIELD NOTES OF ACTUAL SURVEYS MADE BY ME OR UNDER MY SUPERVISION AND THAT THE SAME ARE TRUE AND CORRECT TO THE BEST OF MY KNOWLEDGE AND BELIEF.

REGISTERED LAND SURVEYOR
REGISTRATION NO. 17422
STATE OF COLORADO
09-25-12

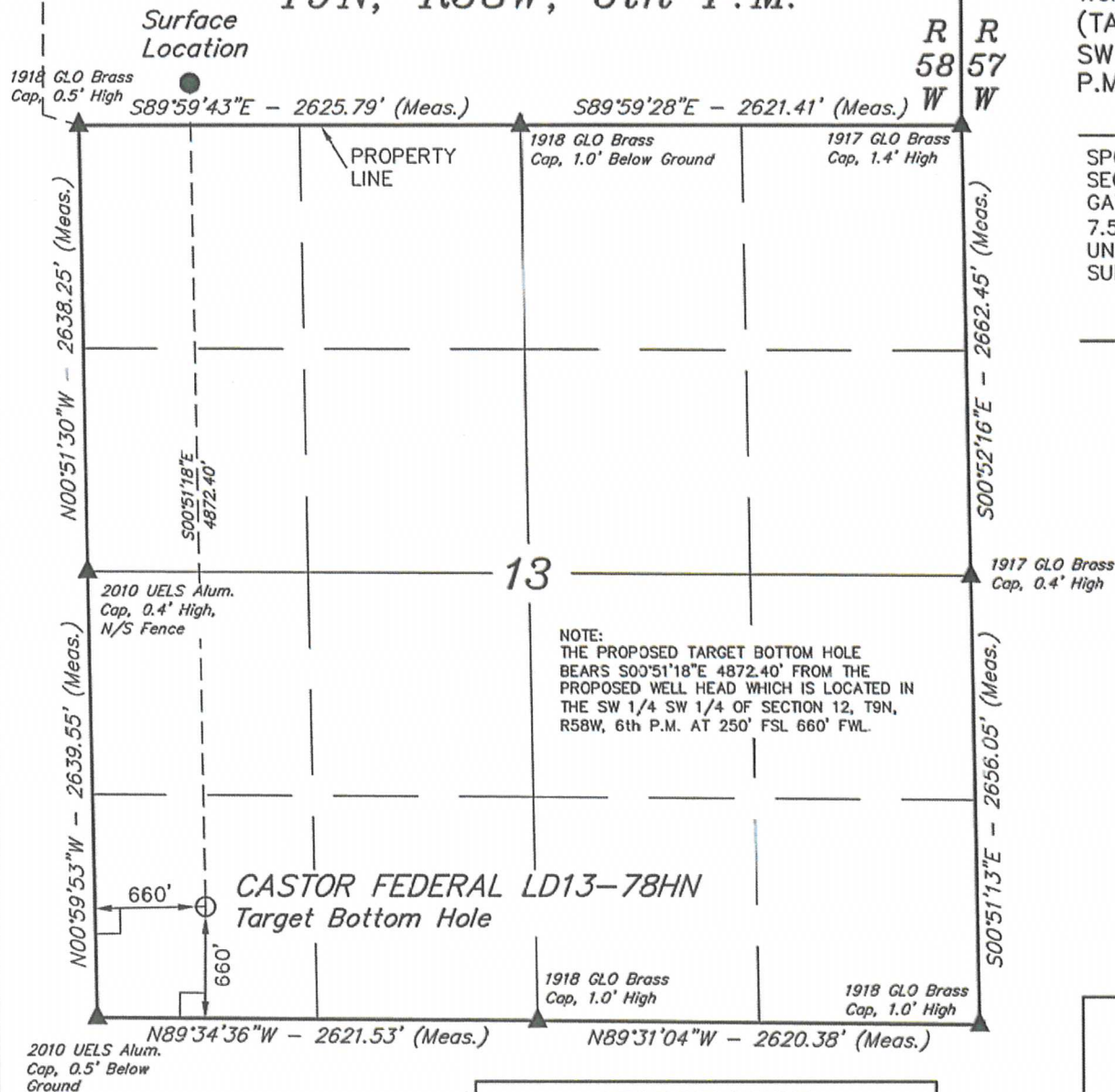
UINTAH ENGINEERING & LAND SURVEYING

85 SOUTH 200 EAST - VERNAL, UTAH 84078

(435) 789-1017

SCALE 1" = 1000'	DATE SURVEYED: 09-17-12	DATE DRAWN: 09-25-12
PARTY DALLAS NIELSEN G.W. J.M.H.	REFERENCES G.L.O. PLAT	
WEATHER WARM	FILE NOBLE ENERGY, INC.	

WELL LOCATION PLAT T9N, R58W, 6th P.M.



LEGEND:

- └─┘ = 90° SYMBOL
- = PROPOSED WELL HEAD.
- ▲ = SECTION CORNERS LOCATED.

FEATURE TABLE

EXISTING FEATURE	DIRECTION	LENGTH
PROPERTY LINE	SOUTH	250'

SHEET 2 OF 2

NAD 83 (TARGET BOTTOM HOLE)
LATITUDE = 40°44'46.34" (40.746206)
LONGITUDE = 103°49'08.73" (103.819092)

NOBLE ENERGY, INC.

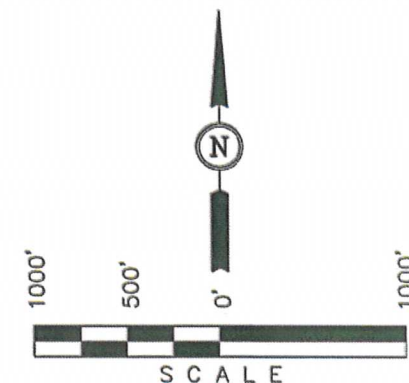
Well location, CASTOR FEDERAL LD13-78HN (TARGET BOTTOM HOLE), located as shown in the SW 1/4 SW 1/4 of Section 13, T9N, R58W, 6th P.M., Weld County, Colorado.

BASIS OF ELEVATION

SPOT ELEVATION LOCATED AT THE NORTHEAST CORNER OF SECTION 15, T9N, R58W, 6th P.M. TAKEN FROM THE GATEHOOK SPRING, QUADRANGLE, COLORADO, WELD COUNTY, 7.5 MINUTE QUAD (TOPOGRAPHIC MAP) PUBLISHED BY THE UNITED STATES DEPARTMENT OF THE INTERIOR, GEOLOGICAL SURVEY. SAID ELEVATION IS MARKED AS BEING 4679 FEET.

BASIS OF BEARINGS

BASIS OF BEARINGS IS A G.P.S. OBSERVATION.



CERTIFICATE

THIS IS TO CERTIFY THAT THE ABOVE PLAT WAS PREPARED FROM FIELD NOTES OF ACTUAL SURVEYS MADE BY ME OR UNDER MY SUPERVISION AND THAT THE SAME ARE TRUE AND CORRECT TO THE BEST OF MY KNOWLEDGE AND BELIEF.

REGISTERED LAND SURVEYOR
REGISTRATION NO. 17429
STATE OF COLORADO
09-25-12

UINTAH ENGINEERING & LAND SURVEYING

85 SOUTH 200 EAST - VERNAL, UTAH 84078

(435) 789-1017

SCALE 1" = 1000'	DATE SURVEYED: 09-17-12	DATE DRAWN: 09-25-12
PARTY DALLAS NIELSEN G.W. J.M.H.	REFERENCES G.L.O. PLAT	
WEATHER WARM	FILE NOBLE ENERGY, INC.	

SITE SKETCH T9N, R58W, 6th P.M.

NOBLE ENERGY, INC.

Well location, CASTOR FEDERAL LD13-78HN (SURFACE LOCATION), located as shown in the SW 1/4 SW 1/4 of Section 12, T9N, R58W, 6th P.M., Weld County, Colorado.

NOTE:
THE PROPOSED TARGET BOTTOM HOLE FOR THIS WELL IS LOCATED IN THE SW 1/4 SW 1/4 OF SECTION 13, T9N, R58W, 6th P.M. AT 660' FSL 660' FWL. IT BEARS S00°51'18"E 4872.40' FROM THE PROPOSED WELL HEAD.

2010 Alum. Cap,
0.2' High

1340.09'

1340.09'

1338.43'

1338.43'

1918 GLO Brass
Cap, 0.8' High

1917 GLO Brass
Cap, 0.7' High

NW 1/4
NW 1/4

NE 1/4
NW 1/4

NW 1/4
NE 1/4

NE 1/4
NE 1/4

1333.27'

1333.27'

1331.59'

1331.59'

SW 1/4
NW 1/4

SE 1/4
NW 1/4

SW 1/4
NE 1/4

SE 1/4
NE 1/4

True
Position

10.00' 1326.49' 1326.49'
W.C.
2012 Priv. Alum. Cap,
0.4' High, PLS 28285

NW 1/4
SW 1/4

NE 1/4
SW 1/4

NW 1/4
SE 1/4

NE 1/4
SE 1/4

1319.68'

1319.68'

1317.72'

1317.72'

SW 1/4
SW 1/4

SE 1/4
SW 1/4

SW 1/4
SE 1/4

SE 1/4
SE 1/4

CASTOR
FEDERAL
LD13-78HN

1918 GLO Brass
Cap, 1.0' Below Ground

1917 GLO Brass
Cap, 1.4' High

1918 GLO Brass
Cap, 0.5' High

1312.90'

1312.90'

1310.70'

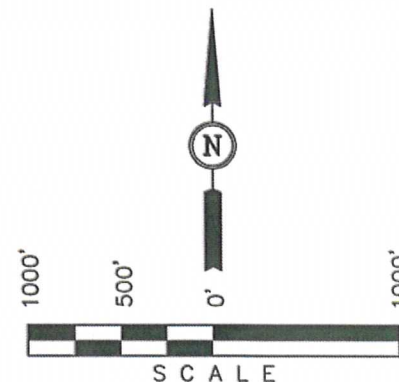
1310.70'

S00°51'18"E
4872.40'

Target
Bottom
Hole

NO WELLS WITHIN SECTION

SHEET 1 OF 2



LEGEND:

- = PROPOSED WELL HEAD.
- ▲ = SECTION CORNERS LOCATED.
- △ = SECTION CORNERS RE-ESTABLISHED. (Not Set or)
- = BOTTOM HOLE

UINTAH ENGINEERING & LAND SURVEYING
85 SOUTH 200 EAST - VERNAL, UTAH 84078
(435) 789-1017

SCALE 1" = 1000'	DATE SURVEYED: 09-17-12	DATE DRAWN: 10-08-12
PARTY DALLAS NIELSEN G.W. H.K.W.	REFERENCES G.L.O. PLAT	
WEATHER WARM	FILE NOBLE ENERGY, INC.	

SITE SKETCH

T9N, R58W, 6th P.M.

NOBLE ENERGY, INC.

1918 GLO Brass
Cap, 0.5' High

Surface Location

1918 GLO Brass
Cap, 1.0' Below Ground

R
58
W

Well location, CASTOR FEDERAL LD13-78HN
(TARGET BOTTOM HOLE) located as shown in the
SW 1/4 SW 1/4 of Section 13, T9N, R58W, 6th
P.M., Weld County, Colorado.

1917 GLO Brass
Cap, 1.4' High

NOTE:
THE PROPOSED TARGET BOTTOM HOLE
BEARS S00°51'18"E 4872.40' FROM THE
PROPOSED WELL HEAD WHICH IS LOCATED IN
THE SW 1/4 SW 1/4 OF SECTION 12, T9N,
R58W, 6th P.M. AT 250' FSL 660' FWL.



LEGEND:

- = PROPOSED WELL HEAD.
- ▲ = SECTION CORNERS LOCATED.
- = BOTTOM HOLE
- ⊙ = ABANDONED WELLS

2010 UELS Alum.
Cap, 0.5' Below
Ground

CASTOR FEDERAL
LD13-78HN
Target Bottom Hole

1918 GLO Brass
Cap, 1.0' High

1918 GLO Brass
Cap, 1.0' High

1918 GLO Brass
Cap, 1.0' High

1918 GLO Brass
Cap, 1.0' High

	WELL NAME	QTR-QTR	FOOTAGES	LATITUDE	LONGITUDE	ELEVATION	PDOP
1	KOG NICOLA #1	SE 1/4 NE 1/4	FROM COGCC DATABASE	40.753415°	103.805084°	4410'	N.A.
2	RAUTH #G	SW 1/4 NE 1/4	FROM COGCC DATABASE	40.752505°	103.811024°	4625'	N.A.

SHEET 2 OF 2

UINTAH ENGINEERING & LAND SURVEYING
85 SOUTH 200 EAST - VERNAL, UTAH 84078
(435) 789-1017

SCALE 1" = 1000'	DATE SURVEYED: 09-17-12	DATE DRAWN: 10-08-12
PARTY DALLAS NIELSEN G.W. H.K.W.	REFERENCES G.L.O. PLAT	
WEATHER WARM	FILE NOBLE ENERGY, INC.	