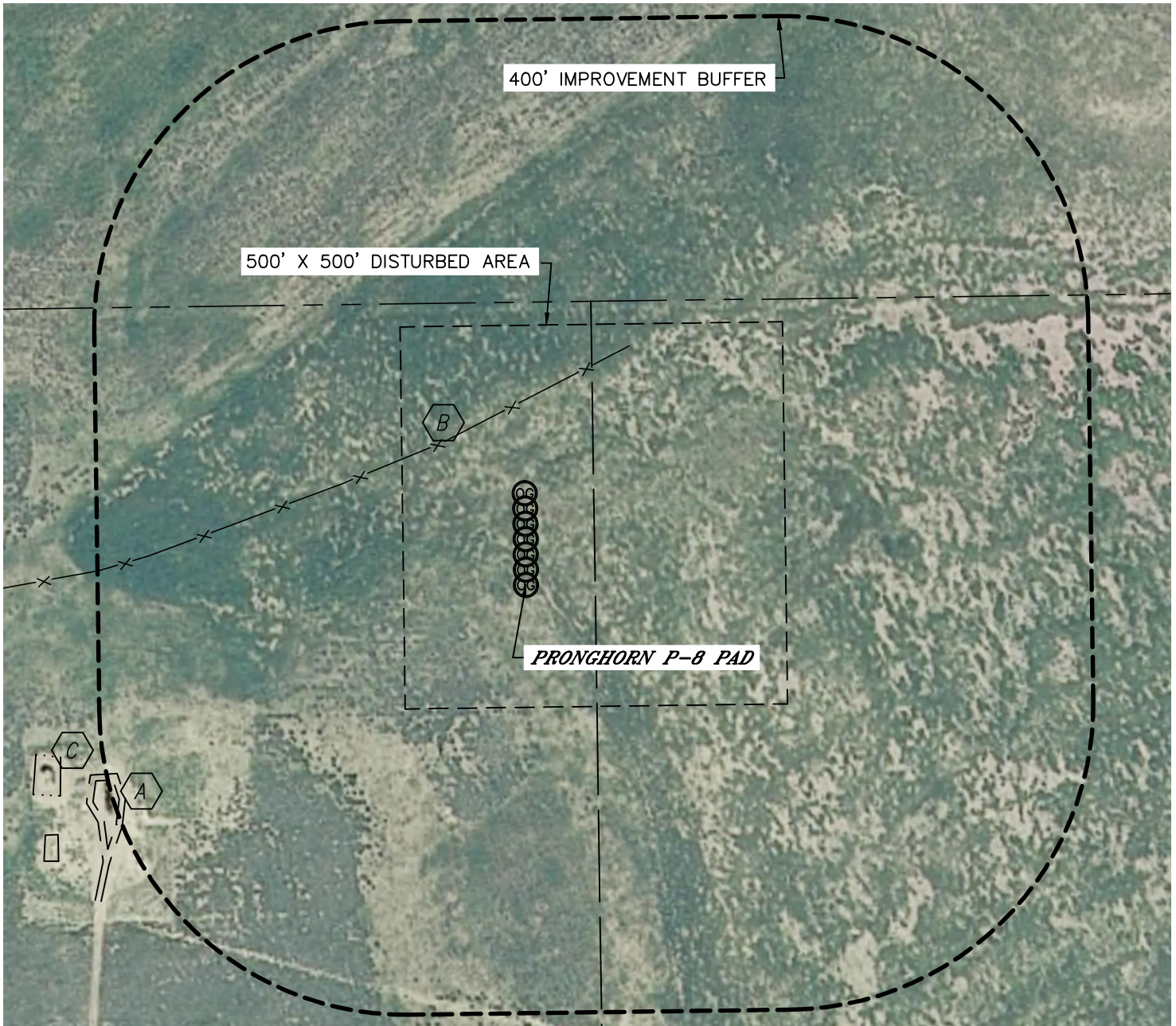







# LOCATION DRAWING

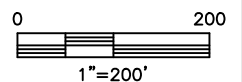
## PRONGHORN P-8 PAD

SECTION: 8  
TOWNSHIP: 5N  
RANGE: 61W



IMPROVEMENTS:  
(MEASURED FROM PROPOSED PRONGHORN P-T-8HNB WELL)

-  FIELD ROAD 593' SW
-  FENCELINE (NO WIRE) 216' NW
-  EXISTING PRODUCTION EQUIPMENT (BONANZA CREEK) 649' & 694' SW



NEAREST: BUILDING 5280'+, PUBLIC ROAD 1422' E (CR 89),  
ABOVE GROUND UTILITY 5280'+, RAILROAD 5280'+, PROPERTY LINE 370' N

DATE: 10/22/2012  
PROJECT#: 2012073