

ENCANA OIL & GAS (USA) INC. - EBUS
DO NOT MAIL-3601 N STAGECOACH RD
LONGMONT, Colorado

Stelling
Stelling 3B-4H

Ensign/135

Post Job Summary

Cement Production Casing

Date Prepared: 07/18/2012
Version: 1

Service Supervisor: OZBUN, RYAN

Submitted by: MCKAY, ADAM

HALLIBURTON

HALLIBURTON

Wellbore Geometry

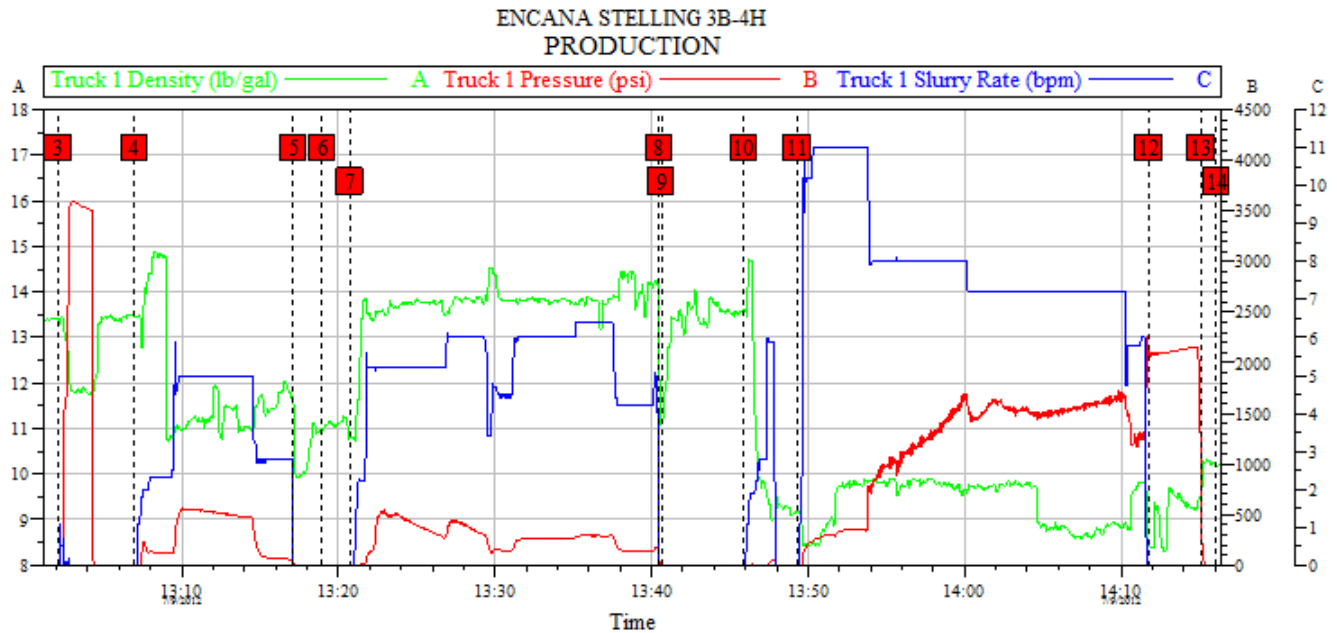
Job Tubulars					MD		TVD		Excess	Shoe Joint Length
Type	Description	Size in	ID in	Wt lbm/ft	Top ft	Bottom ft	Top ft	Bottom ft	%	ft
Open Hole Section	Open Hole		8.750		7,264.00	11,761.00	0.00	0.00		
Casing	Intermediate Casing	7.00	6.276	26.00	0.00	7,264.00	0.00			0.00
Casing	Production Casing	4.50	4.026	11.00	0.00	11,761.00	0.00	0.00		

Pumping Schedule

Stage /Plug #	Fluid #	Fluid Type	Fluid Name	Surface Density lbm/gal	Avg Rate bbl/min	Surface Volume	Downhole Volume
1	1	Spacer	TUNED SPACER III	11.00	5.00	40.0 bbl	40.0 bbl
1	2	Cement Slurry	EXPANDACEM B2	13.80	6.00	330.0 sacks	330.0 sacks
1	3	Spacer	ClayWeb III	8.34	7.00	-	-

HALLIBURTON

Data Acquisition



Global Event Log							
Intersection	T1P	Intersection	T1P	Intersection	T1P	Intersection	T1P
1 Starting Job	12:33:12 -40.70	2 Start Job	12:44:20 -38.70	3 Test Lines	13:02:07 -37.70		
4 Pump Tuned Spacer	13:06:59 -38.70	5 Shutdown	13:17:08 29.97	6 Drop Bottom Plug	13:18:58 -28.70		
7 Pump Lead Cement	13:20:45 -29.70	8 Shutdown	13:40:29 68.16	9 Drop Top Plug	13:40:38 -0.046		
10 Clean Lines	13:45:54 -42.70	11 Pump Displacement	13:49:20 -46.70	12 Bump Plug	14:11:46 2083		
13 Check Floats	14:15:06 462.3	14 End Job	14:16:05 -49.70	15 Ending Job	14:22:15 -36.70		

Customer: ENCANA
Well Description: PRODUCTION

Job Date: 09-Jul-2012
UWI: 05-123-35413

Sales Order #: 98776544

OptiCem v6.4.10
09-Jul-12 14:29

Service Supervisor Reports

Job Log

Date/Time	Chart #	Activity Code	Pump Rate	Cum Vol	Pump		Pressure (psig)	Comments
07/09/2012 12:44		Start Job						PERFORMED WATER TEST ALL RESULTS WERE NORMAL AND OK TO PUMP
07/09/2012 13:02		Test Lines						TEST LINES TO 3500 PSI CHECK FOR VISIBLE LEAKS AND PRESSURE LOSS
07/09/2012 13:06		Pump Spacer 1	5	40			570.0	PUMP 40 BBL TUNED SPACER 11PPG 6.74 YEILD 44.83 GAL/SK MIXED ON THE FLY WITH TESTED WATER
07/09/2012 13:18		Drop Bottom Plug						SHUT DOWN AND DROPPED BOTTOM PLUG PUSHED INTO CASING WITH TESTCO TOOL
07/09/2012 13:20		Pump Lead Cement	6	98.7			280.0	PUMP 330SKS EXPANDACEM B2 13.8 PPG 1.68 YEILD 7.75 GAL/SK 98.7 BBL
07/09/2012 13:40		Shutdown						SHUTDOWN TO DROP TOP PLUG
07/09/2012 13:40		Clean Lines						WASHED PUMPS AND LINES UNTIL CLEAN
07/09/2012 13:45		Drop Top Plug						DROPPED TOP PLUG IN SAME MANNER AS BOTTOM PLUG ALL PLUG DROPS WITNESSED BY COMPANY MAN
07/09/2012 13:49		Pump Displacement	7	174.2			1300.0	PUMP 174.2 BBL BRINE WATER FOR DISPLACEMENT WITH MMCR IN FIRST 10 BBL
07/09/2012 13:54		Displ Reached Cmmt						CAUGHT CEMENT AT 43 BBL AWAY SLOWED RATE
07/09/2012 14:11		Bump Plug						BUMPED PLUG AT 174.2 BBL AT 1300 PSI PRESSURED UP 500 OVER
07/09/2012 14:15		Check Floats						HELD PRESSURE FOR 5 MINUTES AND CHECKED FLOATS FLOATS HELD
07/09/2012 14:16		End Job						END JOB HELD SAFETY MEETING AND RIGGED DOWN

HALLIBURTON

The Road to Excellence Starts with Safety

Sold To #: 340078	Ship To #: 2935852	Quote #:	Sales Order #: 9655023
Customer: ENCANA OIL & GAS (USA) INC. - EBUS		Customer Rep: Laforce, Bill	
Well Name: Stelling		Well #: 3B-4H	API/UWI #: 05-123-35413-00
Field: Wattenberg	City (SAP): HUDSON	County/Parish: Weld	State: Colorado
Contractor: Ensign		Rig/Platform Name/Num: 135	
Job Purpose: Cement Production Casing			
Well Type: Development Well		Job Type: Cement Production Casing	
Sales Person: AARON, WESLEY		Srvc Supervisor: OZBUN, RYAN	MBU ID Emp #: 475709

Job Personnel

HES Emp Name	Exp Hrs	Emp #	HES Emp Name	Exp Hrs	Emp #	HES Emp Name	Exp Hrs	Emp #
DIRKS, RICHARD E	0.0	485940	LANGE, TIMOTHY Paul	0.0	520811	MEADOWS, DANIEL Graham	0.0	500668
OZBUN, RYAN Jacob	0.0	475709	SANFORD, DALE A	0.0	219527			

Equipment

HES Unit #	Distance-1 way	HES Unit #	Distance-1 way	HES Unit #	Distance-1 way	HES Unit #	Distance-1 way
11036301	10 mile	11398490	10 mile	11518550	10 mile	11566182	10 mile
11605597	10 mile	11645063	10 mile				

Job Hours

Date	On Location Hours	Operating Hours	Date	On Location Hours	Operating Hours	Date	On Location Hours	Operating Hours
TOTAL			Total is the sum of each column separately					

Job

Formation Name	Formation Depth (MD)	Top	Bottom	Form Type	Job depth MD	Job Depth TVD	Water Depth	Wk Ht Above Floor	Perforation Depth (MD)	From	To
				BHST	11761. ft	11761. ft		4. ft			

Job Times

Called Out	Date	Time	Time Zone
On Location	09 - Jul - 2012	08:00	MST
Job Started	09 - Jul - 2012	10:45	MST
Job Completed	09 - Jul - 2012	12:40	MST
Job Completed	09 - Jul - 2012	14:15	MST
Departed Loc	09 - Jul - 2012	15:30	MST

Well Data

Description	New / Used	Max pressure psig	Size in	ID in	Weight lbm/ft	Thread	Grade	Top MD ft	Bottom MD ft	Top TVD ft	Bottom TVD ft
Open Hole				8.75				7264.	11761.	.	.
Intermediate Casing	Unknown		7.	6.276	26.	Unknown	N-80	.	7264.	.	.
Production Casing	Unknown		4.5	4.026	11.		P-110	.	11761.	.	.

Tools and Accessories

Type	Size	Qty	Make	Depth	Type	Size	Qty	Make	Depth	Type	Size	Qty	Make
Guide Shoe					Packer					Top Plug			
Float Shoe					Bridge Plug					Bottom Plug			
Float Collar					Retainer					SSR plug set			
Insert Float										Plug Container			
Stage Tool										Centralizers			

Miscellaneous Materials

Gelling Agt	Conc	Surfactant	Conc	Acid Type	Qty	Conc	%
Treatment Fld	Conc	Inhibitor	Conc	Sand Type	Size	Qty	

Fluid Data

Stage/Plug #: 1

HALLIBURTON

Fluid #	Stage Type	Fluid Name	Qty	Qty uom	Mixing Density lbm/gal	Yield ft ³ /sk	Mix Fluid Gal/sk	Rate bbl/min	Total Mix Fluid Gal/sk
1	TUNED SPACER III	TUNED SPACER III - SBM (483826)	40.00	bbl	11.	6.74	42.3	4.0	
	30.27 lbm/bbl	BARITE, 100 LB SK (100003680)							
	39.07 gal/bbl	FRESH WATER							
2	EXPANDACEM B2	EXPANDACEM (TM) SYSTEM (452979)	330.0	sacks	13.8	1.68	7.75	4.0	7.75
	7.75 Gal	FRESH WATER							
3	ClayWeb III		20.00	bbl	8.34	.0	.0	.0	
	0.2 gal/Mgal	CLA-WEB - TOTE (101985045)							
Calculated Values		Pressures		Volumes					
Displacement		Shut In: Instant		Lost Returns		Cement Slurry		Pad	
Top Of Cement		5 Min		Cement Returns		Actual Displacement		Treatment	
Frac Gradient		15 Min		Spacers		Load and Breakdown		Total Job	
Rates									
Circulating		Mixing		Displacement		Avg. Job			
Cement Left In Pipe	Amount	0 ft	Reason	Shoe Joint					
Frac Ring # 1 @	ID		Frac ring # 2 @	ID		Frac Ring # 3 @	ID		Frac Ring # 4 @
The Information Stated Herein Is Correct				Customer Representative Signature					