

ENCANA OIL & GAS (USA) INC. - EBUS
DO NOT MAIL-3601 N STAGECOACH RD
LONGMONT, Colorado

Stelling
Stelling 3B-4H

Ensign/135

Post Job Summary

Cement Intermediate Casing

Date Prepared: 07/18/2012
Version: 1

Service Supervisor: VIGIL, NICHOLAS

Submitted by: MCKAY, ADAM

HALLIBURTON

HALLIBURTON

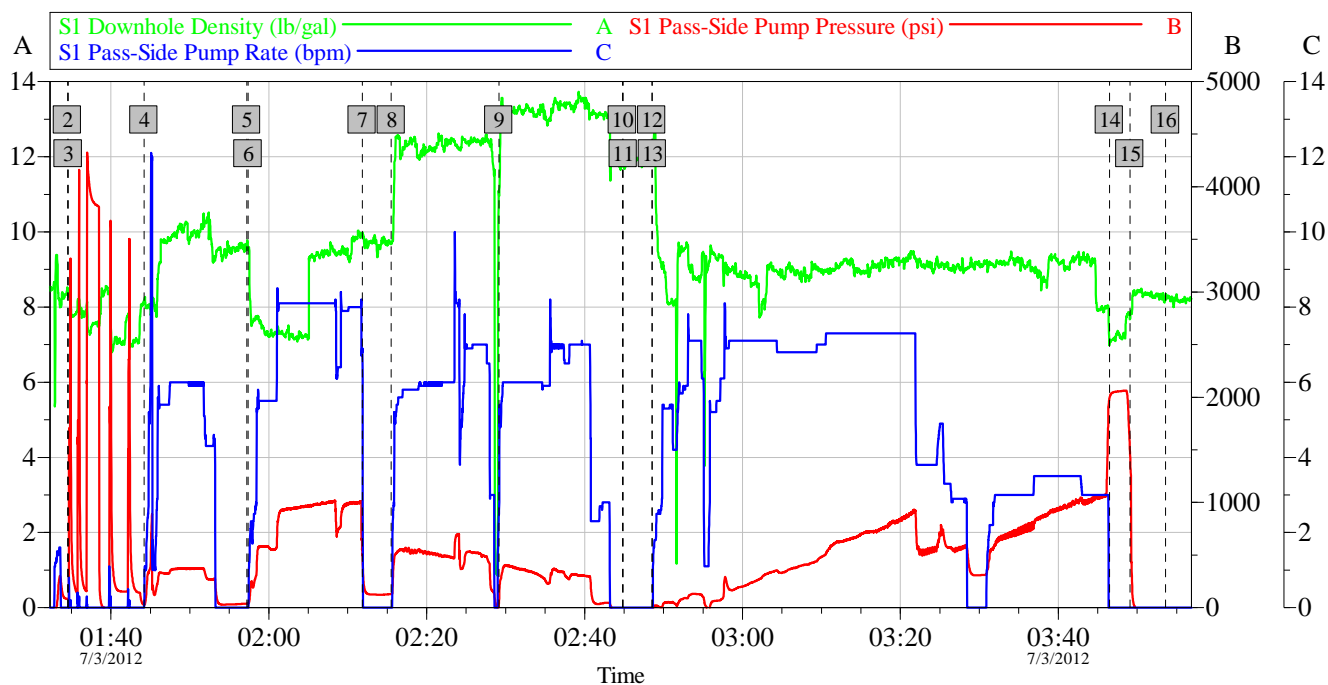
Wellbore Geometry

Job Tubulars					MD		TVD		Excess	Shoe Joint Length
Type	Description	Size in	ID in	Wt lbm/ft	Top ft	Bottom ft	Top ft	Bottom ft	%	ft
Open Hole Section	Open Hole Section		8.750		980.00	7,284.00	980.00	7,284.00		
Casing	Surface Casing	9.63	8.921	36.00	0.00	1,014.00	0.00	1,014.00		
Casing	Intermediate Casing	7.00	6.276	26.00	0.00	7,264.00	0.00	7,264.00		42.00

Pumping Schedule

Stage /Plug #	Fluid #	Fluid Type	Fluid Name	Surface Density lbm/gal	Avg Rate bbl/min	Surface Volume	Downhole Volume
1	1	Spacer	TUNED SPACER III	9.80	4.00	50.0 bbl	50.0 bbl
1	2	Cement Slurry	Tuned Light 10#	10.00	4.00	240.0 sacks	240.0 sacks
1	3	Cement Slurry	Varicem 12#	12.00	4.00	170.0 sacks	170.0 sacks
1	4	Cement Slurry	Varicem 13#	13.00	4.00	215.0 sacks	215.0 sacks
1	5	Spacer	ClayWeb III	8.34	0.00		215.0 sacks

Data Acquisition



Global Event Log					
2	Start Job	01:34:31	3	Test Lines	01:34:36
4	Pump Spacer 1	01:44:11	5	Drop Bottom Plug	01:57:12
6	Pump Cement	01:57:22	7	Drop Bottom Plug	02:11:50
8	Pump Lead Cement	02:15:30	9	Pump Tail Cement	02:29:09
10	Shutdown	02:44:47	11	Clean Lines	02:44:53
12	Drop Top Plug	02:48:31	13	Pump Displacement	02:48:35
14	Bump Plug	03:46:29	15	Check Floats	03:49:04
16	End Job	03:53:36			

Customer:	Job Date: 03-Jul-2012	Sales Order #: 9634797
Well Description:	UWI:	

OptiCem v6.4.10
18-Jul-12 11:11

Service Supervisor Reports

Job Log

Date/Time	Chart #	Activity Code	Pump Rate	Cum Vol	Pump		Pressure (psig)		Comments
07/02/2012 23:00		Arrive At Loc							RIG WAS READY FOR US
07/03/2012 01:34		Start Job							
07/03/2012 01:34		Test Lines							PRESSURE TESTED LINES TO 3500 PSI PRESSURE DID NOT HOLD CUSTOMER AGREED NO VISIBLE SURFACE LEAKS OK TO PROCEED WITH JOB
07/03/2012 01:44		Pump Spacer 1	6	50				370.0	PUMPED 9.8 PPG TUNED SPACER III
07/03/2012 01:57		Drop Bottom Plug							PRE LOADED WITNESSED BY COMPANY MAN
07/03/2012 01:57		Pump Cement	8	99.5				916.0	PUMPED 10 PPG TUNED LIGHT MIXED AT SURFACE 9.3 PPG VERIFIED BY SCALE (240 SKS)
07/03/2012 02:11		Drop Bottom Plug							PRE LOADED WITNESSED BY COMPANY MAN
07/03/2012 02:15		Pump Lead Cement	6	75.3				529.0	PUMPED 12 PPG VARICEM (170 SKS)
07/03/2012 02:29		Pump Tail Cement	6	75				365.0	PUMPED 12 PPG VERICEM (215 SKS)
07/03/2012 02:44		Shutdown							
07/03/2012 02:48		Drop Top Plug							PLUG WITNESSED LEAVING PLUG CONTAINER BY BOTH COMPANY MAN AND MYSELF
07/03/2012 02:48		Pump Displacement	7	175.8				660.0	DISPLACED USING 10.1 PPG MUD
07/03/2012 03:46		Bump Plug	3	175.8				1106.0	CALCULATED PRESSURE TO LAND WAS 641/ 1500 OVER PER COMPANY MAN
07/03/2012 03:49		Check Floats							FLOATS HELD
07/03/2012 03:53		End Job							

HALLIBURTON

The Road to Excellence Starts with Safety

Sold To #: 340078	Ship To #: 2935852	Quote #:	Sales Order #: 9634797
Customer: ENCANA OIL & GAS (USA) INC. - EBUS		Customer Rep: Elrod, Dennis	
Well Name: Stelling		Well #: 3B-4H	API/UWI #: 05-123-35413
Field: WARRENERG	City (SAP): HUDSON	County/Parish: Weld	State: Colorado
Lat: N 40.075 deg. OR N 40 deg. 4 min. 30.72 secs.		Long: W 104.671 deg. OR W -105 deg. 19 min. 43.968 secs.	
Contractor: Ensign		Rig/Platform Name/Num: 135	
Job Purpose: Cement Intermediate Casing			
Well Type: Development Well		Job Type: Cement Intermediate Casing	
Sales Person: AARON, WESLEY		Srvc Supervisor: VIGIL, NICHOLAS	MBU ID Emp #: 443481

Job Personnel

HES Emp Name	Exp Hrs	Emp #	HES Emp Name	Exp Hrs	Emp #	HES Emp Name	Exp Hrs	Emp #
BELL, ROBERT Preston	0.0	437060	BROOM, KENDALL L	0.0	524682	CARPENTER, JACOB P	0.0	499500
CHISLUM, DENNIS	0.0	512130	LINEBARGER, JOSHUA W	0.0	419614	MILLER, GEOFFREY Alan	0.0	460232
PLIENESS, RYAN	0.0	490745	VIGIL, NICHOLAS Joseph	0.0	443481	Walker, James	0.0	524495
Ward, David	0.0	524594						

Equipment

HES Unit #	Distance-1 way	HES Unit #	Distance-1 way	HES Unit #	Distance-1 way	HES Unit #	Distance-1 way
10248053C	10 mile	10822531C	10 mile	10829456	10 mile	10988836	10 mile
11360865C	10 mile	11398490	10 mile	11527037	10 mile	11527041C	10 mile
11562570C	10 mile	11606994	10 mile	11633848	10 mile	5707C	10 mile

Job Hours

Date	On Location Hours	Operating Hours	Date	On Location Hours	Operating Hours	Date	On Location Hours	Operating Hours
TOTAL			Total is the sum of each column separately					

Job

Job Times

Formation Name					Date	Time	Time Zone
Formation Depth (MD)	Top		Bottom		Called Out	02 - Jul - 2012	19:00 MST
Form Type	BHST				On Location	02 - Jul - 2012	23:00 MST
Job depth MD	7316. ft	Job Depth TVD	7316. ft		Job Started	03 - Jul - 2012	01:34 MST
Water Depth		Wk Ht Above Floor			Job Completed	03 - Jul - 2012	03:53 MST
Perforation Depth (MD)	From		To		Departed Loc	03 - Jul - 2012	05:30 MST

Well Data

Description	New / Used	Max pressure psig	Size in	ID in	Weight lbm/ft	Thread	Grade	Top MD ft	Bottom MD ft	Top TVD ft	Bottom TVD ft
Open Hole Section				8.75				980.	7284.	980.	7284.
Intermediate Casing	New		7.	6.276	26.		P110 ICY	.	7264.	.	7264.
Description	New / Used	Max pressure	Size in	ID in	Weight lbm/ft	Thread	Grade	Top MD ft	Bottom MD ft	Top TVD ft	Bottom TVD ft
Surface Casing	Unknown		9.625	8.921	36.		J-55	.	1014.	.	1014.

Tools and Accessories

HALLIBURTON

Type	Size	Qty	Make	Depth	Type	Size	Qty	Make	Depth	Type	Size	Qty	Make
Guide Shoe					Packer					Top Plug			
Float Shoe					Bridge Plug					Bottom Plug			
Float Collar					Retainer					SSR plug set			
Insert Float										Plug Container			
Stage Tool										Centralizers			

Miscellaneous Materials

Gelling Agt		Conc		Surfactant		Conc		Acid Type		Qty		Conc	%
Treatment Fld		Conc		Inhibitor		Conc		Sand Type		Size		Qty	

Fluid Data

Stage/Plug #: 1

Fluid #	Stage Type	Fluid Name	Qty	Qty uom	Mixing Density lbm/gal	Yield ft3/sk	Mix Fluid Gal/sk	Rate bbl/min	Total Mix Fluid Gal/sk
1	TUNED SPACER III	TUNED SPACER III - SBM (483826)	50.00	bbl	9.8	5.78	38.63	4.0	
	39.07 gal/bbl	FRESH WATER							
	30.27 lbm/bbl	BARITE, 100 LB SK (100003680)							
2	Tuned Light 10#	TUNED LIGHT (TM) SYSTEM (452984)	240.0	sacks	10.	2.29	8.49	4.0	8.49
	8.49 Gal	FRESH WATER							
3	Varicem 12#	VARICEM (TM) CEMENT (452009)	170.0	sacks	12.	2.49	13.92	4.0	13.92
	13.92 Gal	FRESH WATER							
4	Varicem 13#	VARICEM (TM) CEMENT (452009)	215.0	sacks	13.	1.96	11.92	4.0	11.92
	11.92 Gal	FRESH WATER							
5	ClayWeb III			bbl	8.34	.0	.0	.0	
	0.2 gal/Mgal	CLA-WEB - TOTE (101985045)							

Calculated Values

Pressures

Volumes

Displacement		Shut In: Instant		Lost Returns		Cement Slurry		Pad	
Top Of Cement		5 Min		Cement Returns		Actual Displacement		Treatment	
Frac Gradient		15 Min		Spacers		Load and Breakdown		Total Job	

Rates

Circulating				Mixing				Displacement				Avg. Job							
Cement Left In Pipe			Amount		42 ft		Reason		Shoe Joint										
Frac Ring # 1 @			ID		Frac ring # 2 @			ID		Frac Ring # 3 @			ID		Frac Ring # 4 @			ID	

The Information Stated Herein Is Correct

Customer Representative Signature