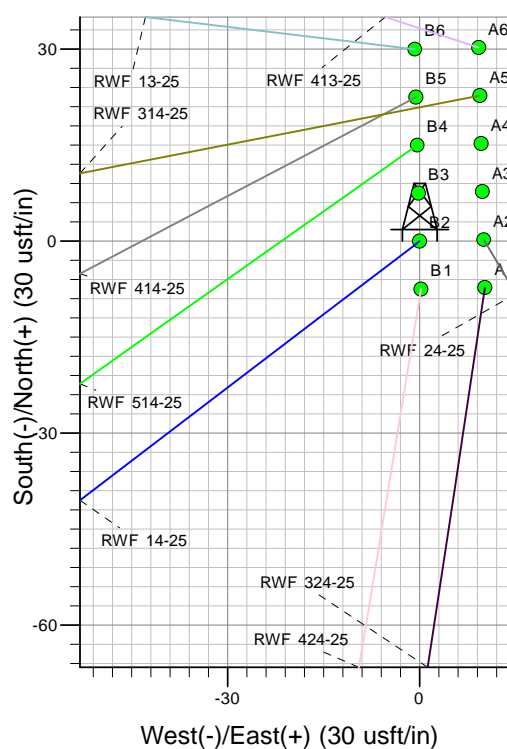
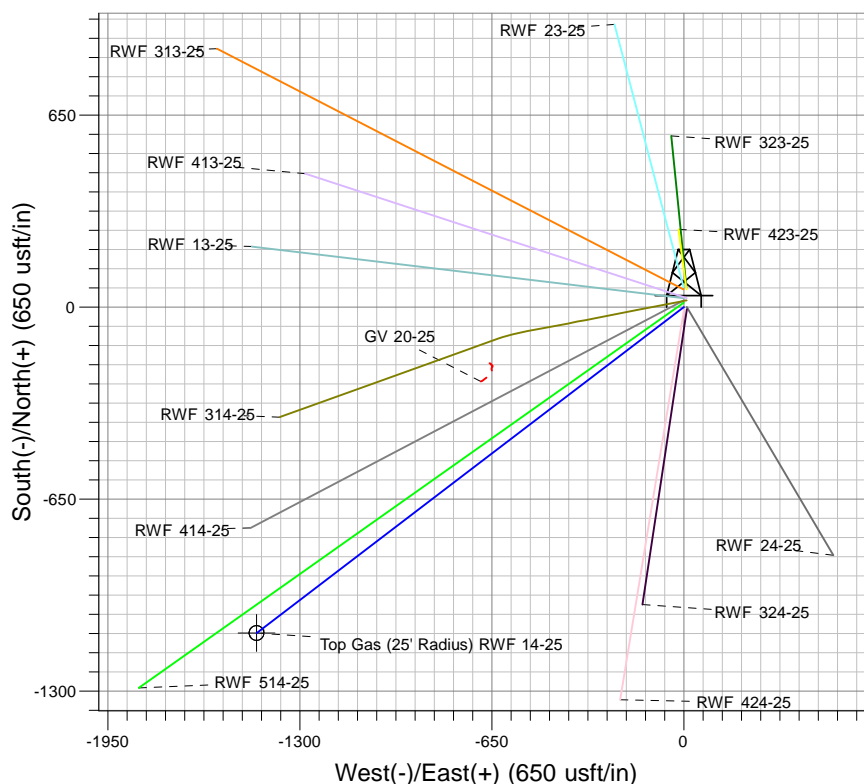
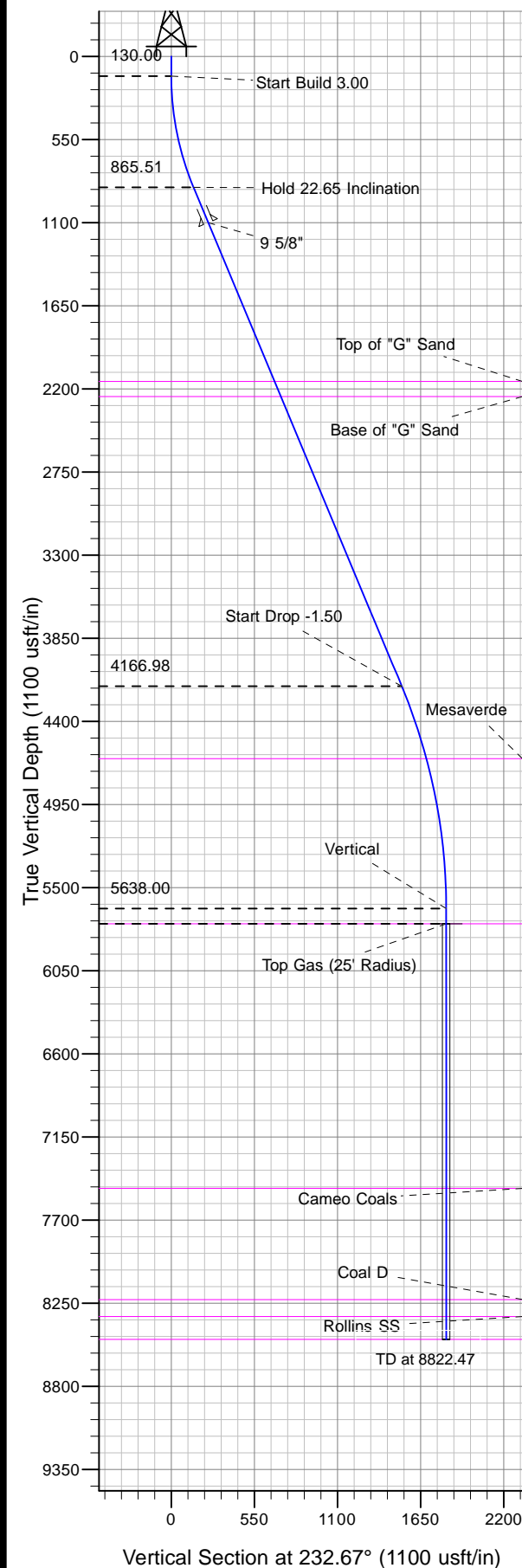




Well Name: RWF 14-25
Surface Location: RWF 23-25 Pad
North American Datum 1983 , US State Plane 1983, Colorado Central Zone
Ground Elevation: 6096.00

+N/-S	+E/-W	Northing	Easting	Latitude	Longitude	Slot
0.00	0.00	1613251.20	2340301.80	39.49385	-107.83788	B2

KELLY BUSHING @ 6122.00usft (Nabors 576)



Project: RU 25-06S-094W
Site: RWF 23-25 Pad
Well: RWF 14-25
Design #1 06Dec12 kjs

Azimuths to True North
Magnetic North: 10.09°
Magnetic Field
Strength: 52119.3snT
Dip Angle: 65.73°
Date: 12/6/2012
Model: IGRF2010

ANNOTATIONS

MD	Inc	Azi	TVD	+N/-S	+E/-W	Vsect	Departure	Annotation
130.00	0.00	0.00	130.00	0.00	0.00	0.00	0.00	Start Build 3.00
885.02	22.65	232.67	865.51	-89.32	-117.14	147.31	147.31	Hold 22.65 Inclination
4462.42	22.65	232.67	4166.98	-924.71	-1212.66	1525.01	1525.01	Start Drop -1.50
5972.47	0.00	0.00	5638.00	-1103.36	-1446.94	1819.62	1819.62	Vertical
6072.47	0.00	0.00	5738.00	-1103.36	-1446.94	1819.62	1819.62	Top Gas
8822.47	0.00	0.00	8488.00	-1103.36	-1446.94	1819.62	1819.62	TD at 8822.47