

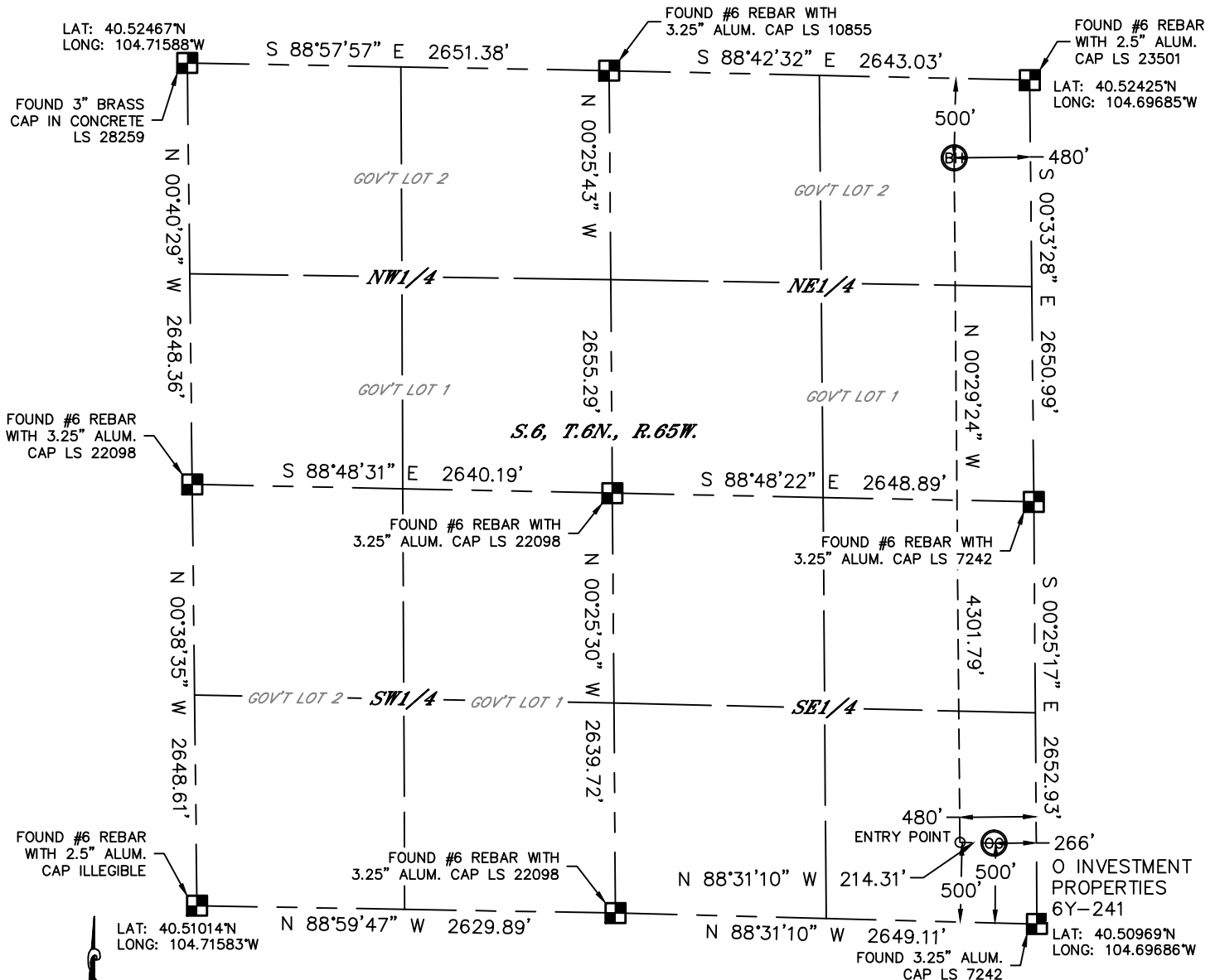


Lat40°, Inc. 1635 Foxtrail Drive, Suite 325 Loveland, CO 970-776-3321

WELL LOCATION CERTIFICATE

THIS MAP DOES NOT REPRESENT A BOUNDARY SURVEY

SECTION: 6
TOWNSHIP: 6N
RANGE: 65W



In accordance with a request from Jeff Dillingham with PDC ENERGY Lat40°, Inc. has determined the surface location of the O INVESTMENT PROPERTIES 6Y-241 to be 500' from the SOUTH line and 266' from the EAST line and the bottom hole to be 500' from the NORTH line and 480' from the EAST line as measured at right angles from the section lines of Section 6, Township 6 North, Range 65 West of the Sixth Principal Meridian, County of Weld, State of Colorado. I hereby state that this Well Location Certificate was prepared by me, or under my direct supervision, that the fieldwork was completed on 1/11/2013, for and on behalf of PDC ENERGY. That this is not a Land Survey Plat or an Improvement Survey Plat, and that it is not to be relied upon for establishment of fence, building, or other future improvement lines.

NOTE:

- 1) Bearings shown are Grid Bearings of the Colorado State Plane Coordinate System, North Zone, North American Datum 1983/2007. The lineal dimensions as contained herein are based upon the "U.S. Survey Foot."
- 2) Ground elevations are based on an observed GPS elevation (NAVD 1988 DATUM).
- 3) IMPROVEMENTS: See LOCATION DRAWING for all visible improvements within 400' of disturbed area.
- 4) SURFACE USE: PASTURE
- 5) INSTRUMENT OPERATOR: ADAM KELLY

SURFACE LOCATION

LAT: 40.51109°N
LONG: 104.69781°W
PDOP: 2.6
ELEV: 4777'
1/4, 1/4: SE1/4SE1/4
NEAREST PROPERTY LINE: 266' EAST

ENTRY POINT

LAT: 40.51111°N
LONG: 104.69858°W

BOTTOM HOLE

LAT: 40.52292°N
LONG: 104.69858°W

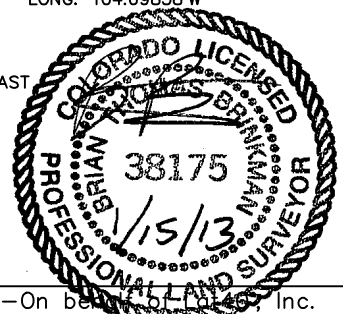
NOTE

According to Colorado law, you must commence any legal action based upon any defect in this W.L.C. within three years after you discover such defect. In no event, may any action based upon any defect in this survey be commenced more than ten years after the date of the certificate shown hereon. (13-80-105 C.R.S.)

LEGEND

- = ALIQUOT MONUMENT AS DESCRIBED
 = CALCULATED POSITION

Brian T. Brinkman—On behalf of Lat40°, Inc.
Colorado Licensed Professional
Land Surveyor No. 38175
DATE: 1/15/2013
PROJECT#: 2012160



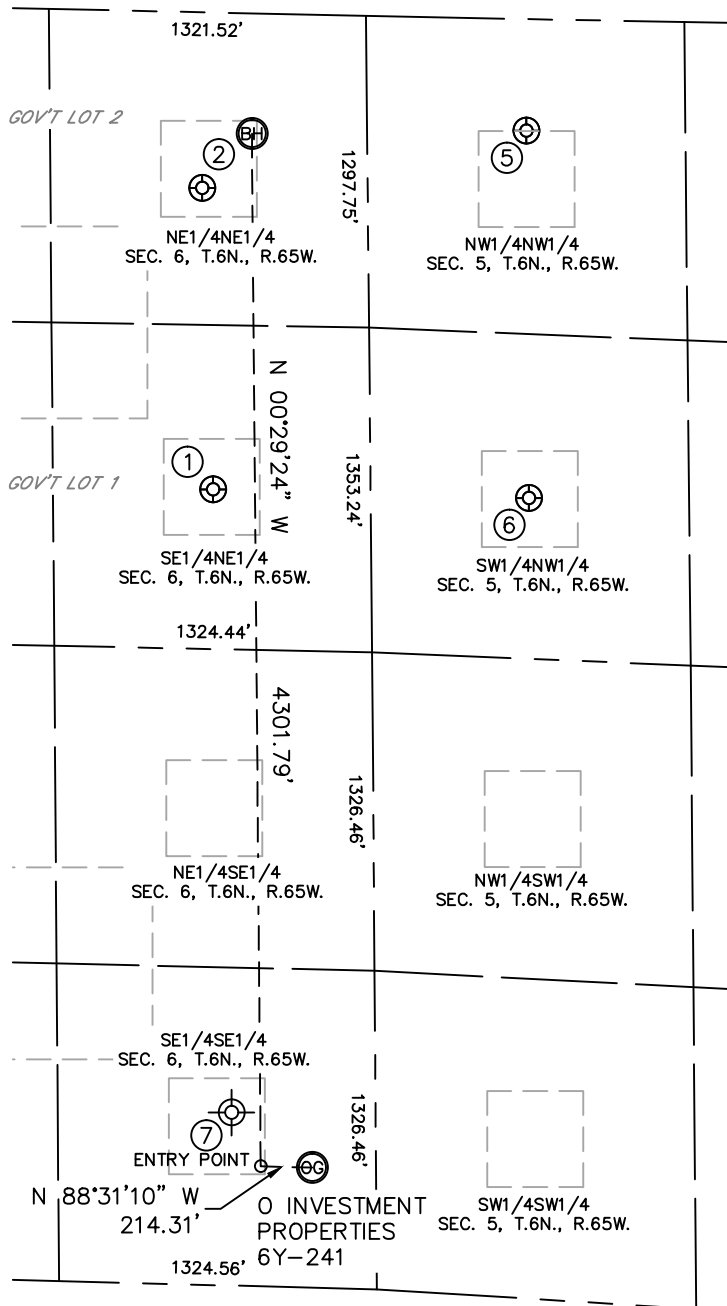


Lat40°, Inc. 1635 Foxtrail Drive, Suite 325 Loveland, CO 970-776-3321

SITE SKETCH

O INVESTMENT PROPERTIES 6Y-241

SECTION: 6
TOWNSHIP: 6N
RANGE: 65W



①

HARSH 1
SE1/4NE1/4
1986' FNL
656' FEL
LAT-40.51885°N
LONG-104.69921°W
PDOP: 1.4
ELEV: 4808'

②

HARSH 41-6
NE1/4NE1/4
732' FNL
689' FEL
LAT-40.52230°N
LONG-104.69933°W
PDOP: 1.4
ELEV: 4822'

⑤

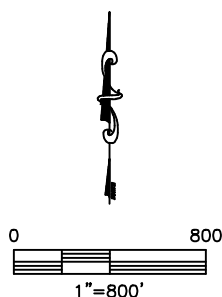
REEMAN 11-5
NW1/4NW1/4
466' FNL
664' FWL
LAT-40.52292°N
LONG-104.69446°W
PDOP: 2.0
ELEV: 4816'

⑥

REEMAN 12-5
SW1/4NW1/4
1995' FNL
659' FWL
LAT-40.51872°N
LONG-104.69448°W
PDOP: 2.1
ELEV: 4820'

⑦

ANDERSON 1 (COGCC)
(PLUGGED & ABANDONED)
SE1/4SE1/4 (COGCC)
720' FSL (COGCC)
600' FEL (COGCC)
LAT-40.51171°N (COGCC)
LONG-104.69902°W (COGCC)
PDOP: N/A
ELEV: 4783' (COGCC)



DATE: 1/15/2013
PROJECT#: 2012160