

# KERR-MCGEE OIL & GAS ONSHORE LP

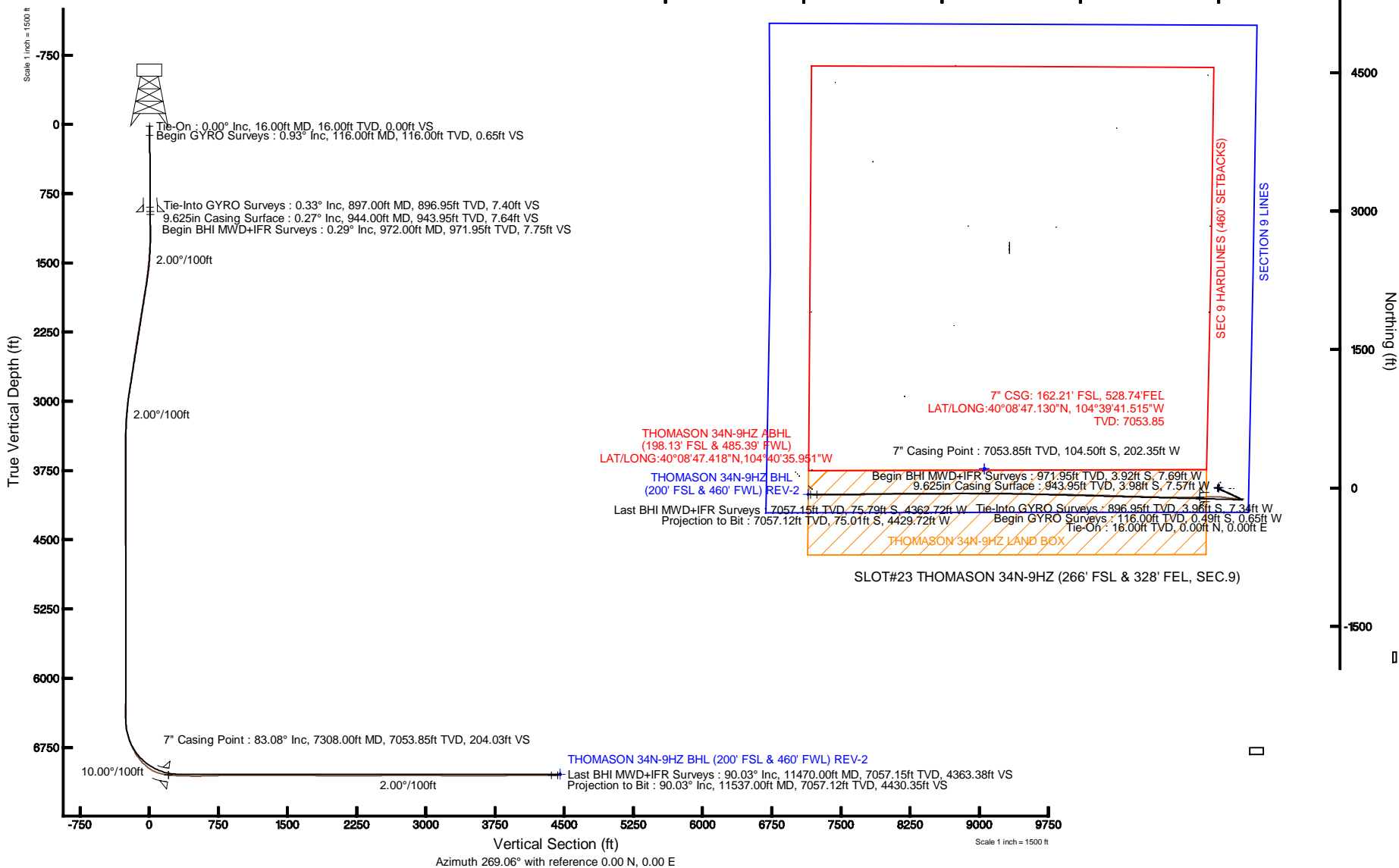
Location: COLORADO Slot: SLOT#23 THOMASON 34N-9HZ (266' FSL & 328' FEL, SEC.9)  
 Field: WELD COUNTY (KERR MCGEE) Well: THOMASON 34N-9HZ  
 Facility: SEC.09-T2N-R65W Wellbore: THOMASON 34N-9HZ PWB

Plot reference wellpath is THOMASON 34N-9HZ (REV-B.0) PWP

True vertical depths are referenced to XTREME (RT)	Grid System: NAD83 / Lambert Colorado SP, Northern Zone (501), US feet
Measured depths are referenced to XTREME (RT)	North Reference: True north
XTREME (RT) to Mean Sea Level: 4886 feet	Scale: True distance
Mean Sea Level to Mud line (At Slot: SLOT#23 THOMASON 34N-9HZ (266' FSL & 328' FEL, SEC.9)): 0 feet	Depths are in feet
Coordinates are in feet referenced to Slot	Created by: precain on 2/27/2013



Scale 1 inch = 1500





# Actual Wellpath Report

THOMASON 34N-9HZ AWP

Page 1 of 7



REFERENCE WELLPATH IDENTIFICATION			
Operator	KERR-MCGEE OIL & GAS ONSHORE LP	Slot	SLOT#23 THOMASON 34N-9HZ (266' FSL & 328' FEL, SEC.9)
Area	COLORADO	Well	THOMASON 34N-9HZ
Field	WELD COUNTY (KERR MCGEE)	Wellbore	THOMASON 34N-9HZ AWB
Facility	SEC.09-T2N-R65W		

REPORT SETUP INFORMATION			
Projection System	NAD83 / Lambert Colorado SP, Northern Zone (501), US feet	Software System	WellArchitect® 3.0.2
North Reference	True	User	Precain
Scale	0.999958	Report Generated	2/27/2013 at 3:34:50 PM
Convergence at slot	0.54° East	Database/Source file	WellArchitectDB/THOMASON_34N-9HZ_AWB.xml

WELLPATH LOCATION						
	Local coordinates		Grid coordinates		Geographic coordinates	
	North[ft]	East[ft]	Easting[US ft]	Northing[US ft]	Latitude	Longitude
Slot Location	-16.40	4446.68	3234593.36	1297400.67	40°08'48.163"N	104°39'38.909"W
Facility Reference Pt			3230146.91	1297375.78	40°08'48.329"N	104°40'36.170"W
Field Reference Pt			3197771.84	1268891.29	40°04'09.600"N	104°47'36.000"W

WELLPATH DATUM			
Calculation method	Minimum curvature	XTREME (RT) to Facility Vertical Datum	4886.00ft
Horizontal Reference Pt	Slot	XTREME (RT) to Mean Sea Level	4886.00ft
Vertical Reference Pt	XTREME (RT)	XTREME (RT) to Mud Line at Slot (SLOT#23 THOMASON 34N-9HZ (266' FSL & 328' FEL, SEC.9))	4886.00ft
MD Reference Pt	XTREME (RT)	Section Origin	N 0.00, E 0.00 ft
Field Vertical Reference	Mean Sea Level	Section Azimuth	269.03°



# Actual Wellpath Report

THOMASON 34N-9HZ AWP

Page 2 of 7



## REFERENCE WELLPATH IDENTIFICATION

Operator	KERR-MCGEE OIL & GAS ONSHORE LP	Slot	SLOT#23 THOMASON 34N-9HZ (266' FSL & 328' FEL, SEC.9)
Area	COLORADO	Well	THOMASON 34N-9HZ
Field	WELD COUNTY (KERR MCGEE)	Wellbore	THOMASON 34N-9HZ AWB
Facility	SEC.09-T2N-R65W		

## WELLPATH DATA (147 stations) † = interpolated/extrapolated station

MD [ft]	Inclination [°]	Azimuth [°]	TVD [ft]	Vert Sect [ft]	North [ft]	East [ft]	Latitude	Longitude	DLS [°/100ft]	Comments
0.00†	0.000	232.700	0.00	0.00	0.00	0.00	40°08'48.163"N	104°39'38.909"W	0.00	
16.00	0.000	232.700	16.00	0.00	0.00	0.00	40°08'48.163"N	104°39'38.909"W	0.00	Tie-On
116.00	0.930	232.700	116.00	0.65	-0.49	-0.65	40°08'48.158"N	104°39'38.917"W	0.93	Begin GYRO Surveys
216.00	0.870	240.760	215.98	1.98	-1.35	-1.95	40°08'48.150"N	104°39'38.934"W	0.14	
316.00	0.870	238.890	315.97	3.30	-2.12	-3.27	40°08'48.142"N	104°39'38.951"W	0.03	
416.00	0.580	226.390	415.96	4.33	-2.86	-4.28	40°08'48.135"N	104°39'38.964"W	0.33	
516.00	0.450	253.630	515.96	5.08	-3.32	-5.03	40°08'48.130"N	104°39'38.974"W	0.27	
616.00	0.380	248.770	615.96	5.77	-3.55	-5.71	40°08'48.128"N	104°39'38.983"W	0.08	
716.00	0.410	255.600	715.95	6.43	-3.76	-6.37	40°08'48.126"N	104°39'38.991"W	0.06	
816.00	0.260	266.900	815.95	7.00	-3.86	-6.94	40°08'48.125"N	104°39'38.998"W	0.16	
897.00	0.330	247.770	896.95	7.41	-3.96	-7.34	40°08'48.124"N	104°39'39.004"W	0.15	Tie-Into GYRO Surveys
972.00	0.290	307.620	971.95	7.76	-3.92	-7.69	40°08'48.124"N	104°39'39.008"W	0.41	Begin BHI MWD+IFR Surveys
1064.00	0.180	316.890	1063.95	8.03	-3.68	-7.97	40°08'48.127"N	104°39'39.012"W	0.13	
1155.00	0.350	356.980	1154.95	8.14	-3.29	-8.09	40°08'48.130"N	104°39'39.013"W	0.27	
1247.00	1.880	107.140	1246.93	6.72	-3.46	-6.66	40°08'48.129"N	104°39'38.995"W	2.20	
1335.00	4.090	126.410	1334.81	2.85	-5.75	-2.75	40°08'48.106"N	104°39'38.944"W	2.72	
1420.00	5.400	128.470	1419.52	-2.65	-10.03	2.82	40°08'48.064"N	104°39'38.873"W	1.55	
1505.00	6.790	125.840	1504.03	-9.76	-15.47	10.02	40°08'48.010"N	104°39'38.780"W	1.67	
1591.00	8.210	121.560	1589.30	-19.01	-21.66	19.38	40°08'47.949"N	104°39'38.659"W	1.77	
1676.00	8.550	112.750	1673.39	-29.91	-27.28	30.38	40°08'47.893"N	104°39'38.518"W	1.56	
1761.00	9.160	111.250	1757.38	-41.96	-32.17	42.51	40°08'47.845"N	104°39'38.362"W	0.77	
1847.00	9.930	113.370	1842.19	-55.05	-37.59	55.70	40°08'47.791"N	104°39'38.192"W	0.98	
1932.00	9.610	110.820	1925.96	-68.32	-43.02	69.06	40°08'47.738"N	104°39'38.020"W	0.63	
2017.00	10.240	111.070	2009.68	-81.91	-48.26	82.74	40°08'47.686"N	104°39'37.844"W	0.74	
2102.00	9.950	110.970	2093.37	-95.72	-53.61	96.65	40°08'47.633"N	104°39'37.664"W	0.34	
2187.00	10.490	112.330	2177.02	-109.64	-59.17	110.66	40°08'47.578"N	104°39'37.484"W	0.70	
2272.00	9.760	111.210	2260.70	-123.42	-64.72	124.53	40°08'47.523"N	104°39'37.305"W	0.89	
2358.00	9.850	115.670	2345.44	-136.75	-70.54	137.96	40°08'47.466"N	104°39'37.132"W	0.89	
2443.00	9.770	119.330	2429.20	-149.47	-77.23	150.80	40°08'47.400"N	104°39'36.967"W	0.74	
2528.00	9.660	119.080	2512.98	-161.87	-84.23	163.32	40°08'47.331"N	104°39'36.806"W	0.14	
2613.00	8.900	116.210	2596.87	-173.89	-90.60	175.45	40°08'47.268"N	104°39'36.650"W	1.05	
2698.00	9.550	117.430	2680.77	-185.95	-96.75	187.61	40°08'47.207"N	104°39'36.493"W	0.80	
2783.00	10.420	116.090	2764.48	-198.99	-103.38	200.77	40°08'47.141"N	104°39'36.324"W	1.06	
2869.00	10.210	116.740	2849.09	-212.67	-110.23	214.56	40°08'47.074"N	104°39'36.146"W	0.28	
2954.00	8.310	115.500	2932.98	-224.84	-116.26	226.84	40°08'47.014"N	104°39'35.988"W	2.25	
3039.00	7.690	115.730	3017.15	-235.42	-121.37	237.50	40°08'46.964"N	104°39'35.851"W	0.73	
3124.00	6.130	112.200	3101.53	-244.67	-125.56	246.83	40°08'46.922"N	104°39'35.731"W	1.90	
3209.00	4.630	106.670	3186.15	-252.11	-128.26	254.32	40°08'46.896"N	104°39'35.634"W	1.87	
3294.00	3.200	113.650	3270.95	-257.54	-130.19	259.78	40°08'46.876"N	104°39'35.564"W	1.77	
3379.00	1.170	115.170	3355.89	-260.47	-131.51	262.74	40°08'46.863"N	104°39'35.526"W	2.39	
3465.00	0.710	29.350	3441.88	-261.53	-131.42	263.79	40°08'46.864"N	104°39'35.512"W	1.54	
3550.00	0.650	34.590	3526.87	-262.08	-130.57	264.33	40°08'46.873"N	104°39'35.505"W	0.10	
3635.00	0.640	15.270	3611.87	-262.49	-129.71	264.72	40°08'46.881"N	104°39'35.500"W	0.25	
3720.00	0.640	0.070	3696.86	-262.63	-128.78	264.85	40°08'46.890"N	104°39'35.498"W	0.20	
3805.00	0.710	14.900	3781.86	-262.78	-127.80	264.99	40°08'46.900"N	104°39'35.497"W	0.22	



# Actual Wellpath Report

THOMASON 34N-9HZ AWP

Page 3 of 7



## REFERENCE WELLPATH IDENTIFICATION

Operator	KERR-MCGEE OIL & GAS ONSHORE LP	Slot	SLOT#23 THOMASON 34N-9HZ (266' FSL & 328' FEL, SEC.9)
Area	COLORADO	Well	THOMASON 34N-9HZ
Field	WELD COUNTY (KERR MCGEE)	Wellbore	THOMASON 34N-9HZ AWB
Facility	SEC.09-T2N-R65W		

## WELLPATH DATA (147 stations)

MD [ft]	Inclination [°]	Azimuth [°]	TVD [ft]	Vert Sect [ft]	North [ft]	East [ft]	Latitude	Longitude	DLS [°/100ft]	Comments
3891.00	0.060	270.660	3867.85	-262.88	-127.28	265.08	40°08'46.905"N	104°39'35.496"W	0.85	
3976.00	0.220	346.640	3952.85	-262.81	-127.12	265.00	40°08'46.907"N	104°39'35.497"W	0.25	
4061.00	0.370	326.230	4037.85	-262.62	-126.73	264.81	40°08'46.911"N	104°39'35.499"W	0.21	
4146.00	0.480	325.560	4122.85	-262.28	-126.21	264.45	40°08'46.916"N	104°39'35.504"W	0.13	
4231.00	0.340	313.080	4207.85	-261.90	-125.75	264.07	40°08'46.920"N	104°39'35.509"W	0.19	
4316.00	0.340	321.870	4292.85	-261.57	-125.38	263.73	40°08'46.924"N	104°39'35.513"W	0.06	
4401.00	0.280	299.240	4377.85	-261.23	-125.08	263.39	40°08'46.927"N	104°39'35.517"W	0.16	
4486.00	0.360	260.360	4462.84	-260.79	-125.02	262.94	40°08'46.928"N	104°39'35.523"W	0.27	
4571.00	0.430	246.770	4547.84	-260.23	-125.19	262.39	40°08'46.926"N	104°39'35.530"W	0.14	
4657.00	0.610	230.040	4633.84	-259.58	-125.61	261.74	40°08'46.922"N	104°39'35.539"W	0.27	
4742.00	0.430	212.480	4718.84	-259.05	-126.17	261.22	40°08'46.916"N	104°39'35.545"W	0.28	
4827.00	0.360	303.700	4803.83	-258.65	-126.29	260.83	40°08'46.915"N	104°39'35.550"W	0.67	
4912.00	0.180	299.980	4888.83	-258.32	-126.08	260.49	40°08'46.917"N	104°39'35.555"W	0.21	
4998.00	0.360	17.890	4974.83	-258.29	-125.75	260.46	40°08'46.920"N	104°39'35.555"W	0.43	
5083.00	0.840	20.390	5059.83	-258.60	-124.91	260.76	40°08'46.929"N	104°39'35.551"W	0.57	
5168.00	0.890	8.100	5144.82	-258.93	-123.68	261.07	40°08'46.941"N	104°39'35.547"W	0.23	
5254.00	0.930	344.070	5230.81	-258.86	-122.34	260.97	40°08'46.954"N	104°39'35.548"W	0.44	
5339.00	0.160	179.730	5315.80	-258.68	-121.80	260.78	40°08'46.959"N	104°39'35.551"W	1.28	
5424.00	0.310	50.390	5400.80	-258.86	-121.77	260.96	40°08'46.960"N	104°39'35.549"W	0.51	
5509.00	0.470	211.050	5485.80	-258.85	-121.92	260.96	40°08'46.958"N	104°39'35.549"W	0.91	
5595.00	0.490	239.840	5571.80	-258.35	-122.41	260.46	40°08'46.953"N	104°39'35.555"W	0.28	
5680.00	0.500	257.990	5656.80	-257.66	-122.67	259.78	40°08'46.951"N	104°39'35.564"W	0.18	
5765.00	0.700	316.020	5741.79	-256.95	-122.37	259.05	40°08'46.954"N	104°39'35.573"W	0.71	
5850.00	0.370	162.170	5826.79	-256.67	-122.26	258.78	40°08'46.955"N	104°39'35.577"W	1.23	
5935.00	0.740	154.650	5911.79	-256.98	-123.02	259.10	40°08'46.947"N	104°39'35.573"W	0.44	
6021.00	0.850	137.750	5997.78	-257.63	-123.99	259.76	40°08'46.938"N	104°39'35.564"W	0.30	
6106.00	0.920	120.710	6082.77	-258.62	-124.81	260.77	40°08'46.930"N	104°39'35.551"W	0.32	
6191.00	0.440	100.530	6167.76	-259.52	-125.22	261.68	40°08'46.926"N	104°39'35.539"W	0.62	
6276.00	0.330	140.090	6252.76	-260.00	-125.46	262.16	40°08'46.923"N	104°39'35.533"W	0.33	
6361.00	0.700	166.470	6337.76	-260.27	-126.16	262.44	40°08'46.916"N	104°39'35.530"W	0.51	
6422.00	0.970	166.690	6398.75	-260.46	-127.02	262.64	40°08'46.908"N	104°39'35.527"W	0.44	
6511.00	3.300	242.910	6487.69	-258.32	-128.92	260.54	40°08'46.889"N	104°39'35.554"W	3.61	
6554.00	7.940	260.370	6530.48	-254.27	-129.98	256.50	40°08'46.878"N	104°39'35.606"W	11.38	
6596.00	12.190	267.350	6571.82	-246.96	-130.67	249.21	40°08'46.872"N	104°39'35.700"W	10.51	
6639.00	15.710	273.250	6613.55	-236.62	-130.55	238.86	40°08'46.873"N	104°39'35.833"W	8.82	
6681.00	18.770	276.380	6653.66	-224.24	-129.48	226.47	40°08'46.883"N	104°39'35.993"W	7.61	
6724.00	21.510	278.680	6694.03	-209.60	-127.52	211.79	40°08'46.903"N	104°39'36.182"W	6.63	
6767.00	22.690	285.040	6733.87	-193.86	-124.18	195.99	40°08'46.936"N	104°39'36.385"W	6.20	
6810.00	25.780	281.330	6773.08	-176.75	-120.19	178.81	40°08'46.975"N	104°39'36.606"W	8.01	
6852.00	30.030	277.090	6810.19	-157.40	-117.09	159.41	40°08'47.006"N	104°39'36.856"W	11.16	
6895.00	34.780	274.730	6846.49	-134.53	-114.75	136.50	40°08'47.029"N	104°39'37.151"W	11.43	
6937.00	38.440	278.290	6880.20	-109.72	-111.88	111.63	40°08'47.057"N	104°39'37.472"W	10.07	
6980.00	43.020	279.190	6912.78	-82.07	-107.61	83.91	40°08'47.100"N	104°39'37.829"W	10.74	
7022.00	46.960	276.040	6942.48	-52.72	-103.70	54.48	40°08'47.138"N	104°39'38.207"W	10.77	
7065.00	52.200	275.740	6970.35	-20.23	-100.35	21.93	40°08'47.171"N	104°39'38.627"W	12.20	



# Actual Wellpath Report

THOMASON 34N-9HZ AWP

Page 4 of 7



## REFERENCE WELLPATH IDENTIFICATION

Operator	KERR-MCGEE OIL & GAS ONSHORE LP	Slot	SLOT#23 THOMASON 34N-9HZ (266' FSL & 328' FEL, SEC.9)
Area	COLORADO	Well	THOMASON 34N-9HZ
Field	WELD COUNTY (KERR MCGEE)	Wellbore	THOMASON 34N-9HZ AWB
Facility	SEC.09-T2N-R65W		

## WELLPATH DATA (147 stations) † = interpolated/extrapolated station

MD [ft]	Inclination [°]	Azimuth [°]	TVD [ft]	Vert Sect [ft]	North [ft]	East [ft]	Latitude	Longitude	DLS [°/100ft]	Comments
7108.00	58.260	273.440	6994.86	14.91	-97.55	-13.26	40°08'47.199"N	104°39'39.080"W	14.76	
7151.00	64.960	268.640	7015.31	52.68	-96.91	-51.04	40°08'47.205"N	104°39'39.566"W	18.41	
7193.00	71.840	267.010	7030.76	91.69	-98.41	-90.04	40°08'47.191"N	104°39'40.068"W	16.77	
7236.00	77.820	266.530	7042.01	133.15	-100.75	-131.46	40°08'47.167"N	104°39'40.602"W	13.95	
7255.00	79.370	266.280	7045.76	151.75	-101.92	-150.05	40°08'47.156"N	104°39'40.841"W	8.26	
7308.00†	83.077	268.054	7053.85	204.09	-104.50	-202.35	40°08'47.130"N	104°39'41.515"W	7.74	7" Casing Point
7361.00	86.790	269.800	7058.53	256.87	-105.49	-255.12	40°08'47.121"N	104°39'42.194"W	7.74	
7446.00	88.020	270.150	7062.38	341.77	-105.52	-340.03	40°08'47.120"N	104°39'43.288"W	1.50	
7506.00	88.700	270.470	7064.09	401.73	-105.20	-400.01	40°08'47.123"N	104°39'44.060"W	1.25	
7591.00	89.780	269.880	7065.22	486.71	-104.94	-485.00	40°08'47.126"N	104°39'45.154"W	1.45	
7676.00	91.100	271.800	7064.57	571.65	-103.69	-569.98	40°08'47.138"N	104°39'46.249"W	2.74	
7761.00	91.600	271.900	7062.57	656.53	-100.95	-654.91	40°08'47.165"N	104°39'47.342"W	0.60	
7846.00	92.120	271.650	7059.81	741.39	-98.32	-739.83	40°08'47.191"N	104°39'48.436"W	0.68	
7932.00	90.580	271.500	7057.78	827.27	-95.96	-825.77	40°08'47.215"N	104°39'49.543"W	1.80	
8017.00	90.640	271.240	7056.88	912.20	-93.92	-910.74	40°08'47.235"N	104°39'50.637"W	0.31	
8102.00	91.140	271.610	7055.56	997.11	-91.81	-995.70	40°08'47.256"N	104°39'51.731"W	0.73	
8187.00	89.500	271.570	7055.08	1082.02	-89.45	-1080.66	40°08'47.279"N	104°39'52.825"W	1.93	
8273.00	90.490	272.220	7055.09	1167.92	-86.61	-1166.62	40°08'47.307"N	104°39'53.932"W	1.38	
8358.00	89.900	271.590	7054.80	1252.81	-83.78	-1251.57	40°08'47.335"N	104°39'55.026"W	1.02	
8443.00	89.660	271.700	7055.13	1337.72	-81.34	-1336.53	40°08'47.359"N	104°39'56.120"W	0.31	
8529.00	90.300	272.010	7055.16	1423.61	-78.56	-1422.49	40°08'47.386"N	104°39'57.227"W	0.83	
8614.00	89.380	270.780	7055.39	1508.54	-76.49	-1507.46	40°08'47.407"N	104°39'58.321"W	1.81	
8699.00	90.210	271.580	7055.70	1593.48	-74.74	-1592.44	40°08'47.424"N	104°39'59.415"W	1.36	
8784.00	88.670	270.610	7056.53	1678.41	-73.12	-1677.42	40°08'47.440"N	104°40'00.509"W	2.14	
8870.00	88.580	271.130	7058.59	1764.34	-71.81	-1763.38	40°08'47.453"N	104°40'01.616"W	0.61	
8955.00	88.450	270.090	7060.80	1849.28	-70.90	-1848.35	40°08'47.462"N	104°40'02.711"W	1.23	
9040.00	89.500	270.240	7062.32	1934.25	-70.66	-1933.33	40°08'47.464"N	104°40'03.805"W	1.25	
9125.00	89.530	270.780	7063.04	2019.22	-69.90	-2018.32	40°08'47.471"N	104°40'04.899"W	0.64	
9211.00	89.720	270.150	7063.60	2105.19	-69.21	-2104.32	40°08'47.478"N	104°40'06.007"W	0.77	
9296.00	90.460	269.800	7063.46	2190.18	-69.24	-2189.32	40°08'47.478"N	104°40'07.101"W	0.96	
9381.00	90.120	270.480	7063.03	2275.16	-69.04	-2274.32	40°08'47.480"N	104°40'08.196"W	0.89	
9466.00	89.810	270.310	7063.09	2360.13	-68.45	-2359.31	40°08'47.485"N	104°40'09.290"W	0.42	
9552.00	91.600	270.630	7062.03	2446.10	-67.74	-2445.30	40°08'47.492"N	104°40'10.398"W	2.11	
9637.00	91.870	271.020	7059.45	2531.02	-66.52	-2530.25	40°08'47.504"N	104°40'11.492"W	0.56	
9722.00	91.170	270.390	7057.20	2615.95	-65.48	-2615.22	40°08'47.515"N	104°40'12.586"W	1.11	
9807.00	91.200	270.550	7055.44	2700.90	-64.78	-2700.19	40°08'47.521"N	104°40'13.680"W	0.19	
9893.00	89.720	270.200	7054.75	2786.87	-64.22	-2786.19	40°08'47.527"N	104°40'14.787"W	1.77	
9978.00	89.630	270.580	7055.23	2871.85	-63.64	-2871.18	40°08'47.532"N	104°40'15.882"W	0.46	
10063.00	89.350	271.040	7055.99	2956.80	-62.44	-2956.17	40°08'47.544"N	104°40'16.976"W	0.63	
10149.00	89.040	271.200	7057.20	3042.74	-60.75	-3042.15	40°08'47.561"N	104°40'18.083"W	0.41	
10234.00	88.520	270.250	7059.01	3127.68	-59.68	-3127.12	40°08'47.571"N	104°40'19.178"W	1.27	
10319.00	89.380	269.200	7060.57	3212.66	-60.09	-3212.10	40°08'47.567"N	104°40'20.272"W	1.60	
10404.00	89.470	269.640	7061.42	3297.65	-60.95	-3297.09	40°08'47.559"N	104°40'21.366"W	0.53	
10489.00	89.900	269.800	7061.89	3382.64	-61.36	-3382.09	40°08'47.554"N	104°40'22.461"W	0.54	
10575.00	89.690	268.790	7062.19	3468.64	-62.42	-3468.08	40°08'47.544"N	104°40'23.568"W	1.20	



# Actual Wellpath Report

THOMASON 34N-9HZ AWP

Page 5 of 7



## REFERENCE WELLPATH IDENTIFICATION

Operator	KERR-MCGEE OIL & GAS ONSHORE LP	Slot	SLOT#23 THOMASON 34N-9HZ (266' FSL & 328' FEL, SEC.9)
Area	COLORADO	Well	THOMASON 34N-9HZ
Field	WELD COUNTY (KERR MCGEE)	Wellbore	THOMASON 34N-9HZ AWB
Facility	SEC.09-T2N-R65W		

## WELLPATH DATA (147 stations)

MD [ft]	Inclination [°]	Azimuth [°]	TVD [ft]	Vert Sect [ft]	North [ft]	East [ft]	Latitude	Longitude	DLS [°/100ft]	Comments
10660.00	89.590	267.910	7062.73	3553.63	-64.87	-3553.04	40°08'47.519"N	104°40'24.662"W	1.04	
10745.00	89.630	266.960	7063.31	3638.60	-68.67	-3637.96	40°08'47.482"N	104°40'25.756"W	1.12	
10830.00	90.670	267.830	7063.08	3723.56	-72.54	-3722.87	40°08'47.443"N	104°40'26.849"W	1.60	
10915.00	91.480	269.040	7061.49	3808.54	-74.86	-3807.82	40°08'47.420"N	104°40'27.943"W	1.71	
11001.00	91.530	269.350	7059.23	3894.51	-76.06	-3893.78	40°08'47.408"N	104°40'29.050"W	0.37	
11086.00	91.540	269.720	7056.95	3979.47	-76.75	-3978.75	40°08'47.401"N	104°40'30.144"W	0.44	
11171.00	90.060	269.660	7055.77	4064.46	-77.21	-4063.73	40°08'47.397"N	104°40'31.239"W	1.74	
11256.00	89.720	270.170	7055.93	4149.45	-77.34	-4148.73	40°08'47.395"N	104°40'32.333"W	0.72	
11341.00	89.410	270.270	7056.58	4234.43	-77.01	-4233.73	40°08'47.398"N	104°40'33.428"W	0.38	
11427.00	89.870	270.690	7057.12	4320.40	-76.29	-4319.72	40°08'47.405"N	104°40'34.535"W	0.72	
11470.00	90.030	270.660	7057.15	4363.38	-75.79	-4362.72	40°08'47.410"N	104°40'35.089"W	0.38	Last BHI MWD+IFR Surveys
11537.00	90.030	270.660	7057.12	4430.35	-75.01	-4429.72	40°08'47.418"N	104°40'35.951"W	0.00	Projection to Bit

## HOLE & CASING SECTIONS - Ref Wellbore: THOMASON 34N-9HZ AWB Ref Wellpath: THOMASON 34N-9HZ AWP

String/Diameter	Start MD [ft]	End MD [ft]	Interval [ft]	Start TVD [ft]	End TVD [ft]	Start N/S [ft]	Start E/W [ft]	End N/S [ft]	End E/W [ft]
13.5in Open Hole	16.00	944.00	928.00	16.00	943.95	0.00	0.00	-3.98	-7.57
9.625in Casing Surface	16.00	944.00	928.00	16.00	943.95	0.00	0.00	-3.98	-7.57
8.75in Open Hole	944.00	7318.00	6374.00	943.95	7054.99	-3.98	-7.57	-104.81	-212.28
7in Casing Intermediate	16.00	7308.00	7292.00	16.00	7053.85	0.00	0.00	-104.50	-202.35
6.125in Open Hole	7308.00	11537.00	4229.00	7053.85	7057.12	-104.50	-202.35	-75.01	-4429.72



# Actual Wellpath Report

THOMASON 34N-9HZ AWP

Page 6 of 7



REFERENCE WELLPATH IDENTIFICATION			
Operator	KERR-MCGEE OIL & GAS ONSHORE LP	Slot	SLOT#23 THOMASON 34N-9HZ (266' FSL & 328' FEL, SEC.9)
Area	COLORADO	Well	THOMASON 34N-9HZ
Field	WELD COUNTY (KERR MCGEE)	Wellbore	THOMASON 34N-9HZ AWB
Facility	SEC.09-T2N-R65W		

TARGETS									
Name	MD [ft]	TVD [ft]	North [ft]	East [ft]	Grid East [US ft]	Grid North [US ft]	Latitude	Longitude	Shape
SECTION 9 LINES		-11.00	203.83	-2542.06	3232049.59	1297580.42	40°08'50.176"N	104°40'11.644"W	polygon
THOMASON 34N-9HZ BHL ON PLAT (100' FSL & 460' FWL) REV-1		6976.00	-172.94	-4455.41	3230139.98	1297185.58	40°08'46.450"N	104°40'36.282"W	point
THOMASON 34N-9HZ BHL (200' FSL & 460' FWL) REV-2		7045.00	-72.94	-4455.41	3230139.03	1297285.57	40°08'47.438"N	104°40'36.282"W	point
THOMASON 34N-9HZ LAND BOX		7045.00	0.00	0.00	3234593.36	1297400.67	40°08'48.163"N	104°39'38.909"W	polygon
SEC 9 HARDLINES (460' SETBACKS)		7189.00	203.83	-2542.06	3232049.59	1297580.42	40°08'50.176"N	104°40'11.644"W	polygon

WELLPATH COMPOSITION - Ref Wellbore: THOMASON 34N-9HZ AWB    Ref Wellpath: THOMASON 34N-9HZ AWP				
Start MD [ft]	End MD [ft]	Positional Uncertainty Model	Log Name/Comment	Wellbore
16.00	897.00	Generic gyro - continuous (Standard)	GYRODATA SURVEYS <116-897>	THOMASON 34N-9HZ AWB
897.00	7255.00	NaviTrak (MAGCORR,IFR)	BHI MWD+IFR SURVEYS 8 3/4" HOLE <972-7255>	THOMASON 34N-9HZ AWB
7255.00	11470.00	OnTrak (MAGCORR,IFR)	BHI MWD+IFR SURVEYS 6 1/8" HOLE <7361-11470>	THOMASON 34N-9HZ AWB
11470.00	11537.00	Blind Drilling (std)	Projection to bit	THOMASON 34N-9HZ AWB



# Actual Wellpath Report

THOMASON 34N-9HZ AWP

Page 7 of 7



REFERENCE WELLPATH IDENTIFICATION			
Operator	KERR-MCGEE OIL & GAS ONSHORE LP	Slot	SLOT#23 THOMASON 34N-9HZ (266' FSL & 328' FEL, SEC.9)
Area	COLORADO	Well	THOMASON 34N-9HZ
Field	WELD COUNTY (KERR MCGEE)	Wellbore	THOMASON 34N-9HZ AWB
Facility	SEC.09-T2N-R65W		

WELLPATH COMMENTS					
MD [ft]	Inclination [°]		Azimuth [°]	TVD [ft]	Comment
16.00		0.000	232.700	16.00	Tie-On
116.00		0.930	232.700	116.00	Begin GYRO Surveys
897.00		0.330	247.770	896.95	Tie-Into GYRO Surveys
972.00		0.290	307.620	971.95	Begin BHI MWD+IFR Surveys
7308.00		83.077	268.054	7053.85	7" Casing Point
11470.00		90.030	270.660	7057.15	Last BHI MWD+IFR Surveys
11537.00		90.030	270.660	7057.12	Projection to Bit