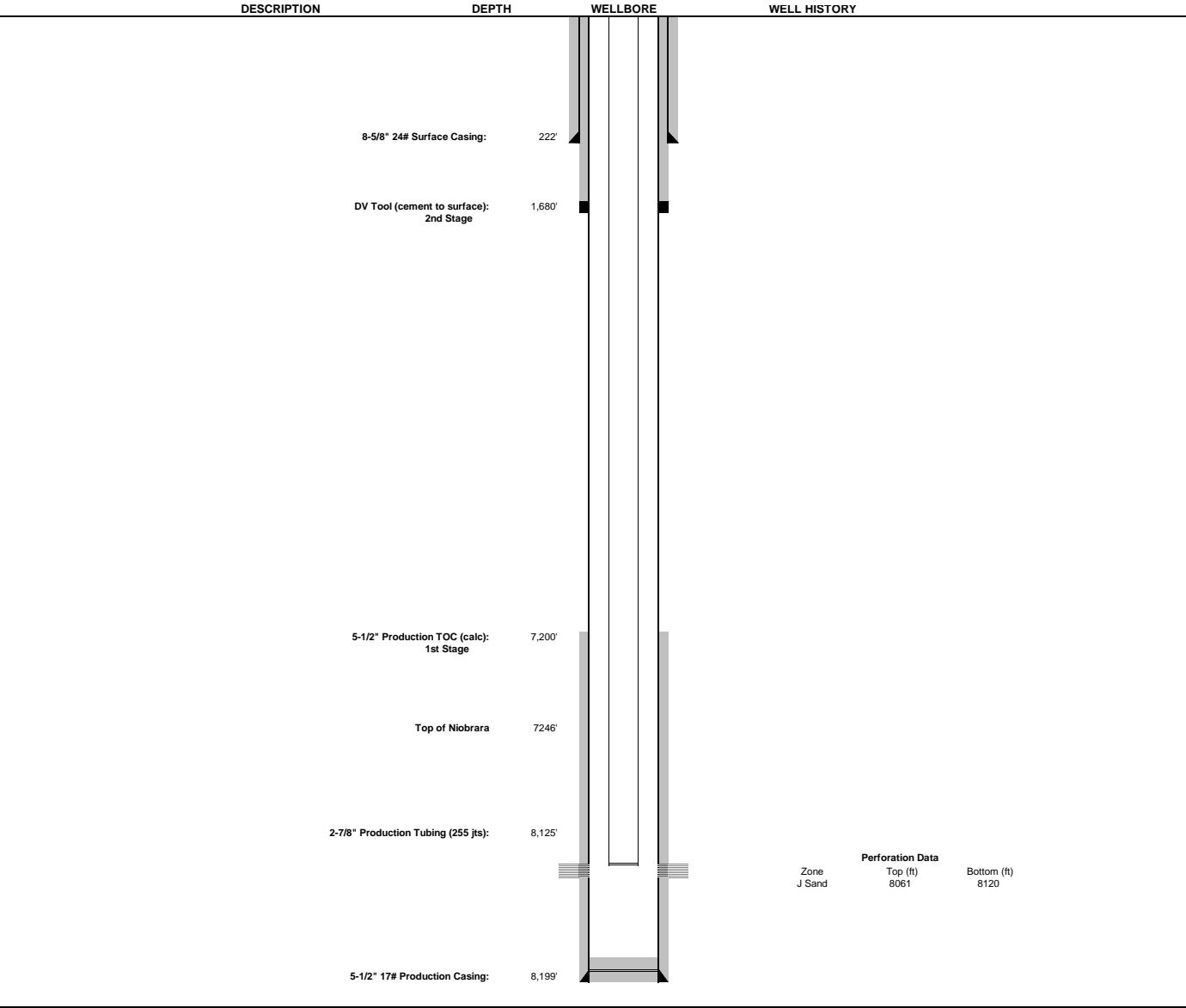


Box Elder G-2 (BEFORE P&A)



WELL: Box Elder G-2

LOCATION: NESW Sec 24 2S R65W

FORMATION: J-Sand

API #: 05-001-06652

Field: Ambush

CLASSIFICATION:

CURRENT STATUS: Shut In

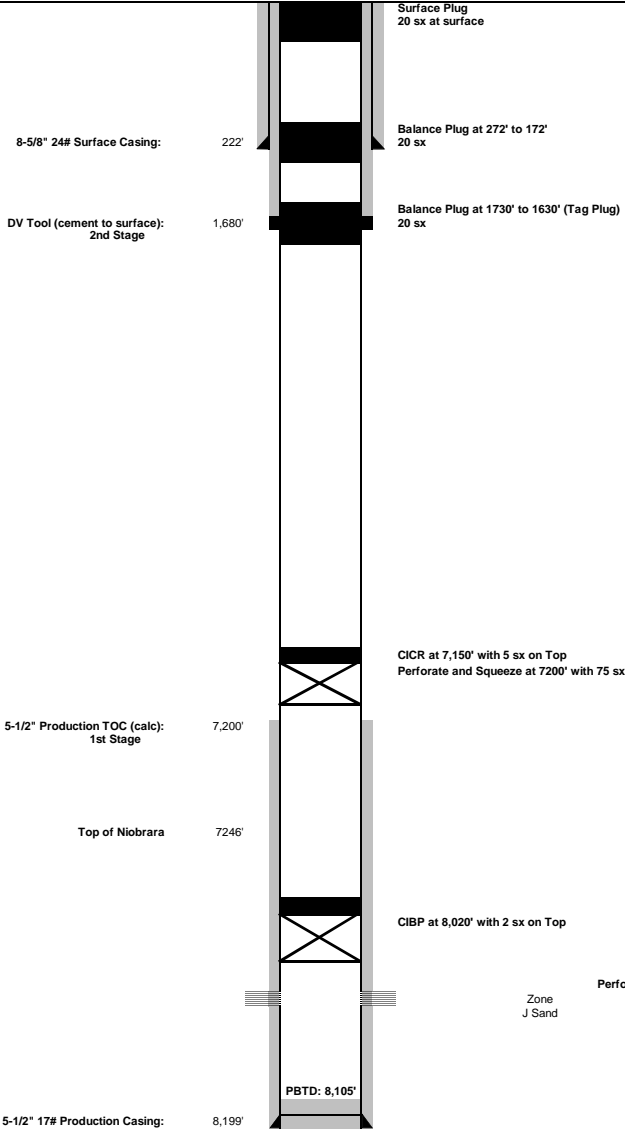
TUBULAR DATA							
Type	Size	Weight	Grade	Top	Bottom	Burst	Collapse
Surface	8 5/8"	24.0 ppf	-	0	222'		
Production	5 1/2"	17.0 ppf	-	0	8,199'		
Tubing	2 7/8"	-	-	0	8,125'		



Box Elder G-2 (AFTER P&A)



DESCRIPTION                      DEPTH                      WELLBORE                      WELL HISTORY



Surface Plug  
20 sx at surface

Balance Plug at 272' to 172'  
20 sx

Balance Plug at 1730' to 1630' (Tag Plug)  
20 sx

CICR at 7,150' with 5 sx on Top  
Perforate and Squeeze at 7200' with 75 sx

CIBP at 8,020' with 2 sx on Top

Zone J Sand

Perforation Data  
Top (ft) 8061  
Bottom (ft) 8120

WELL: Box Elder G-2

LOCATION:        NESW        Sec 24        2S        R65W

FORMATION: J-Sand

API #: 05-001-06652

Field: Ambush

CLASSIFICATION:

CURRENT STATUS: Shut In

TUBULAR DATA						
Type	Size	Weight	Grade	Top	Bottom	Burst
Surface	8 5/8"	24.0 ppf	-	0	222'	
Production	5 1/2"	17.0 ppf	-	0	8,199'	
Tubing	-	-	-	-	-	