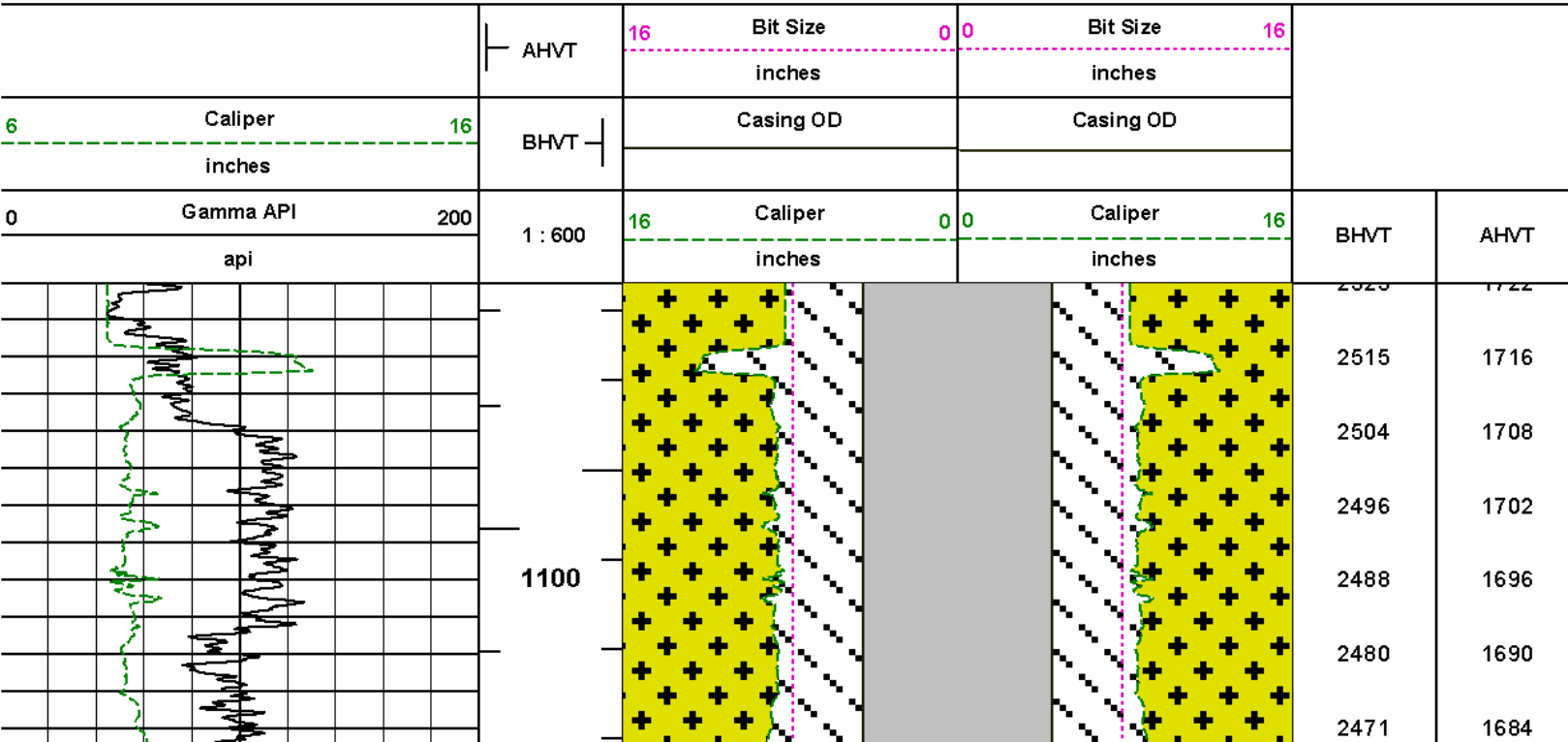
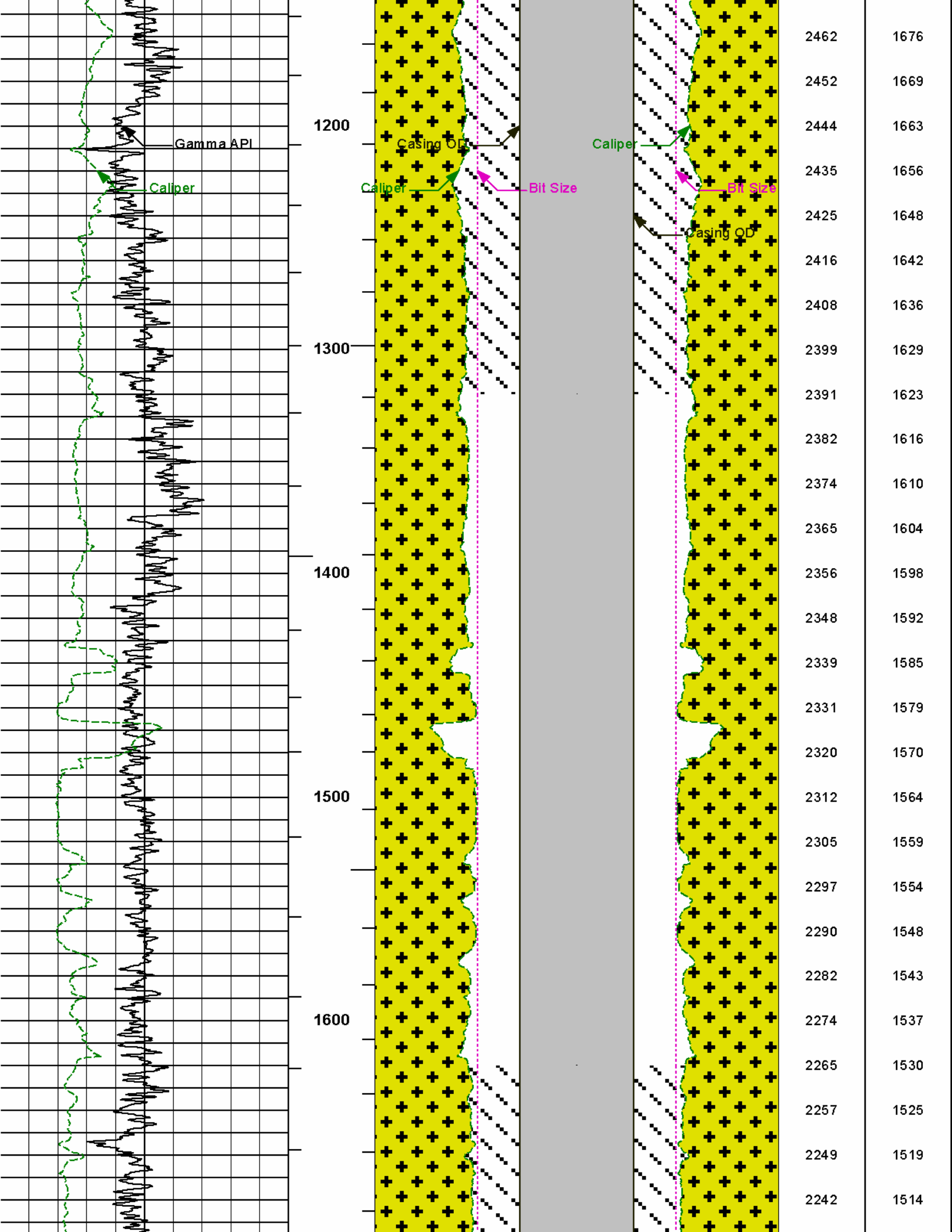


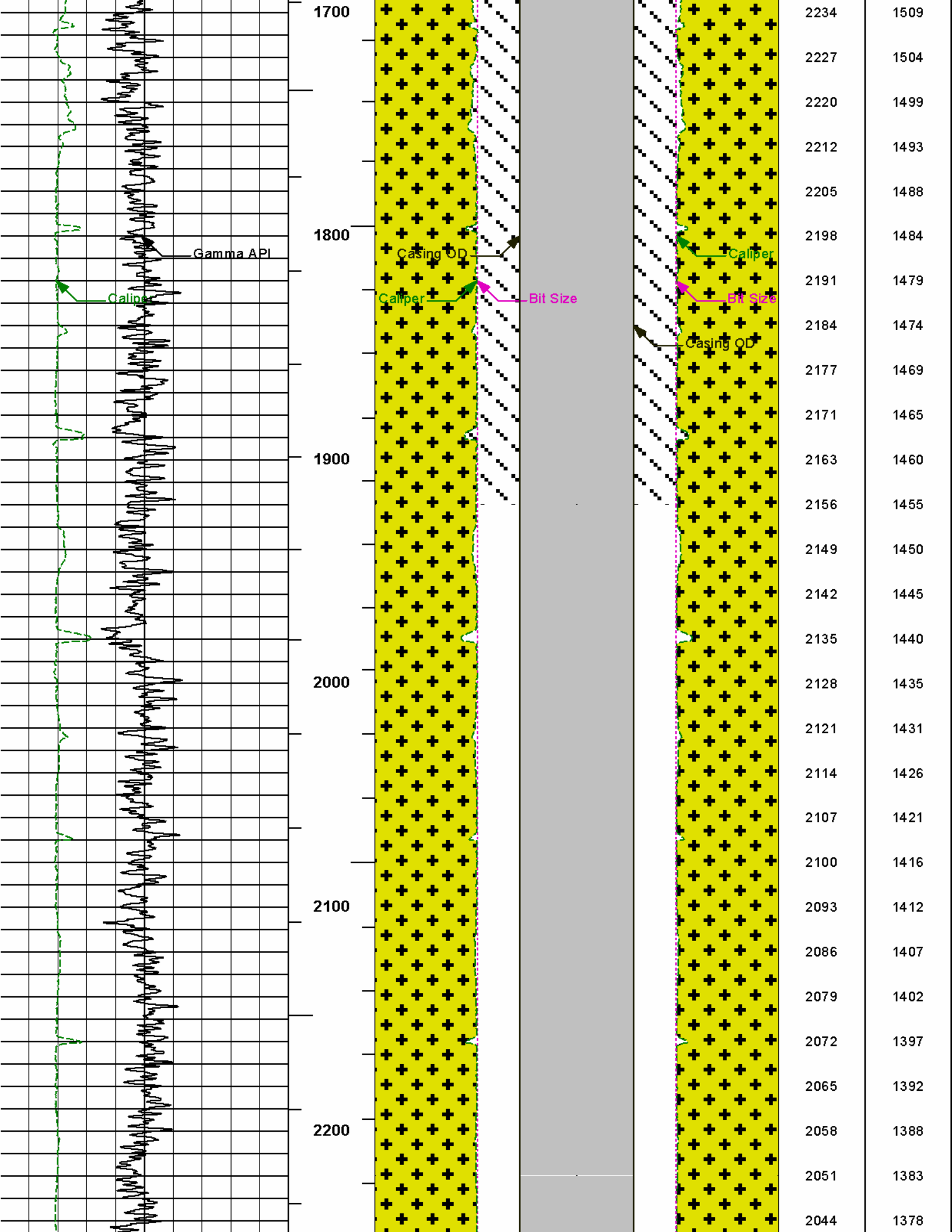
KERR-MCGEE OIL & GAS ONSHORE LP										BOREHOLE VOLUME									
NORTHGLENN STATE 19-36X																			
WATTENBERG																			
WELD CO																			
COMPANY WELL FIELD COUNTY STATE										COMPANY KERR-MCGEE OIL & GAS ONSHORE LP WELL NORTHGLENN STATE 19-36X FIELD WATTENBERG COUNTY WELD STATE CO									
API No. 06123344690100 Location SURFACE LOCATION: 1.289' FSL & 2.491' FEL SWSE BOTTOM LOCATION: 1.400' FSL & 1.648' FWL NESW LATITUDE: 40.003875° LONGITUDE: -104.951438°										Other Services: RWCH DSNT SDLT ACRT									
Permanent Datum GL										Elev.: K.B. 5134.0 ft									
Log measured from KB										D.F. 5133.0 ft									
Drilling measured from KB										G.L. 5119.0 ft									
Date 27-Feb-12																			
Run No. ONE																			
Depth - Driller 8270.00 ft																			
Depth - Logger 8262.0 ft																			
Bottom - Logged Interval 8234 ft																			
Top - Logged Interval CASING																			
Casing - Driller 8.625 in @ 1037.0 ft										@									
Casing - Logger 1037.0 ft																			
Bit Size 7.875 in										@									
Type Fluid in Hole WATER BASED MUD																			
Density 9.0 ppg										50.00 s/qt									
PH 7.50																			
Source of Sample MUD CELL																			
Rm @ Meas. Temperature 1.140 ohmm @ 70.70 degF										@									
Rmf @ Meas. Temperature 0.92 ohmm @ 75.00 degF										@									
Rmc @ Meas. Temperature 0.971 ohmm @ 75.00 degF										@									
Source Rmf Rmc CHART CHART																			
Rm @ BHT 0.38 ohmm @ 228.0 degF										@									
Time Since Circulation 11.0 hr																			
Time on Bottom 27-Feb-12 12:34																			
Max. Rec. Temperature 228.0 degF @ 8262.0 ft										@									
Equipment 11454566 BRIGHTON																			
Recorded By R. TWEETEN																			
Witnessed By B. BENJAMIN										T. GEDAMU									

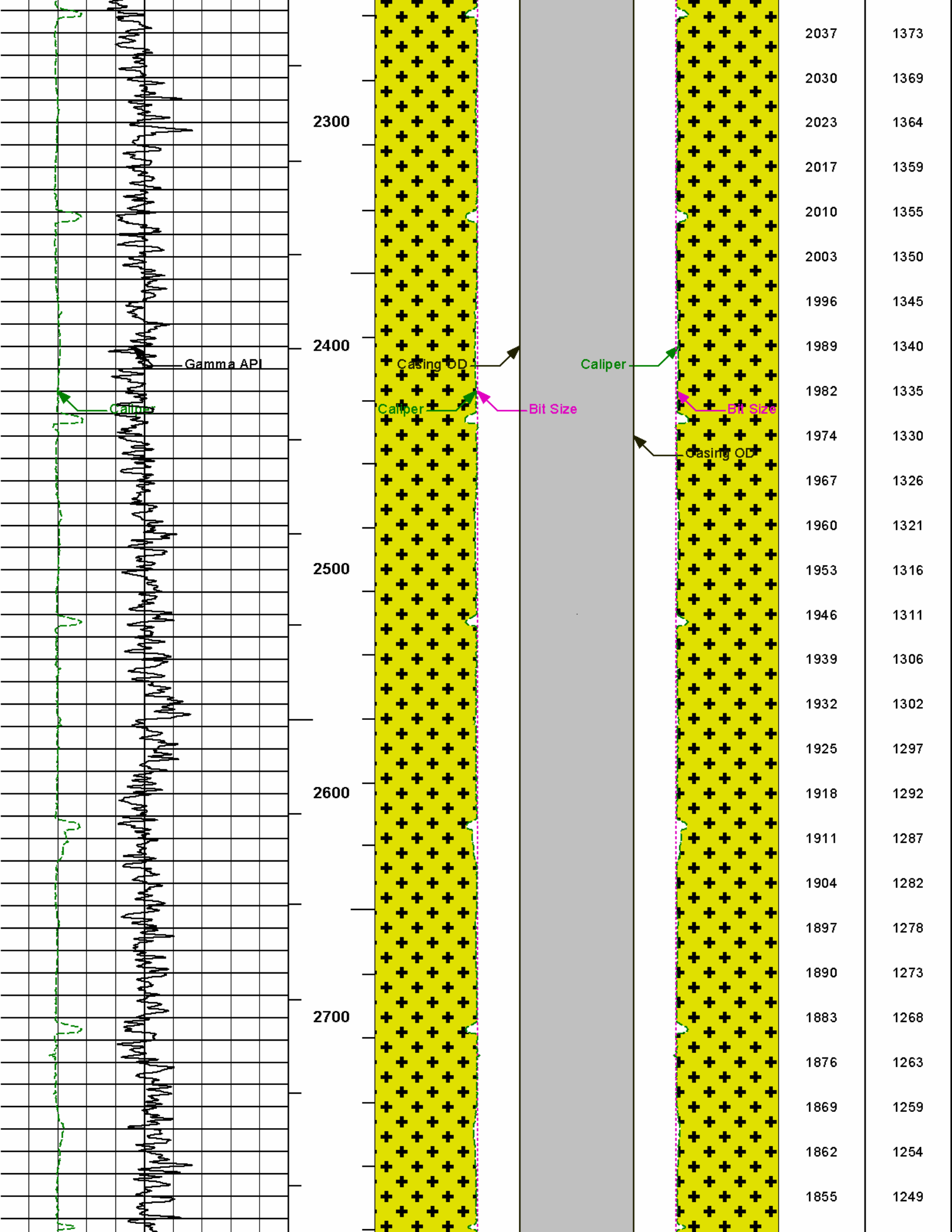
Fold here

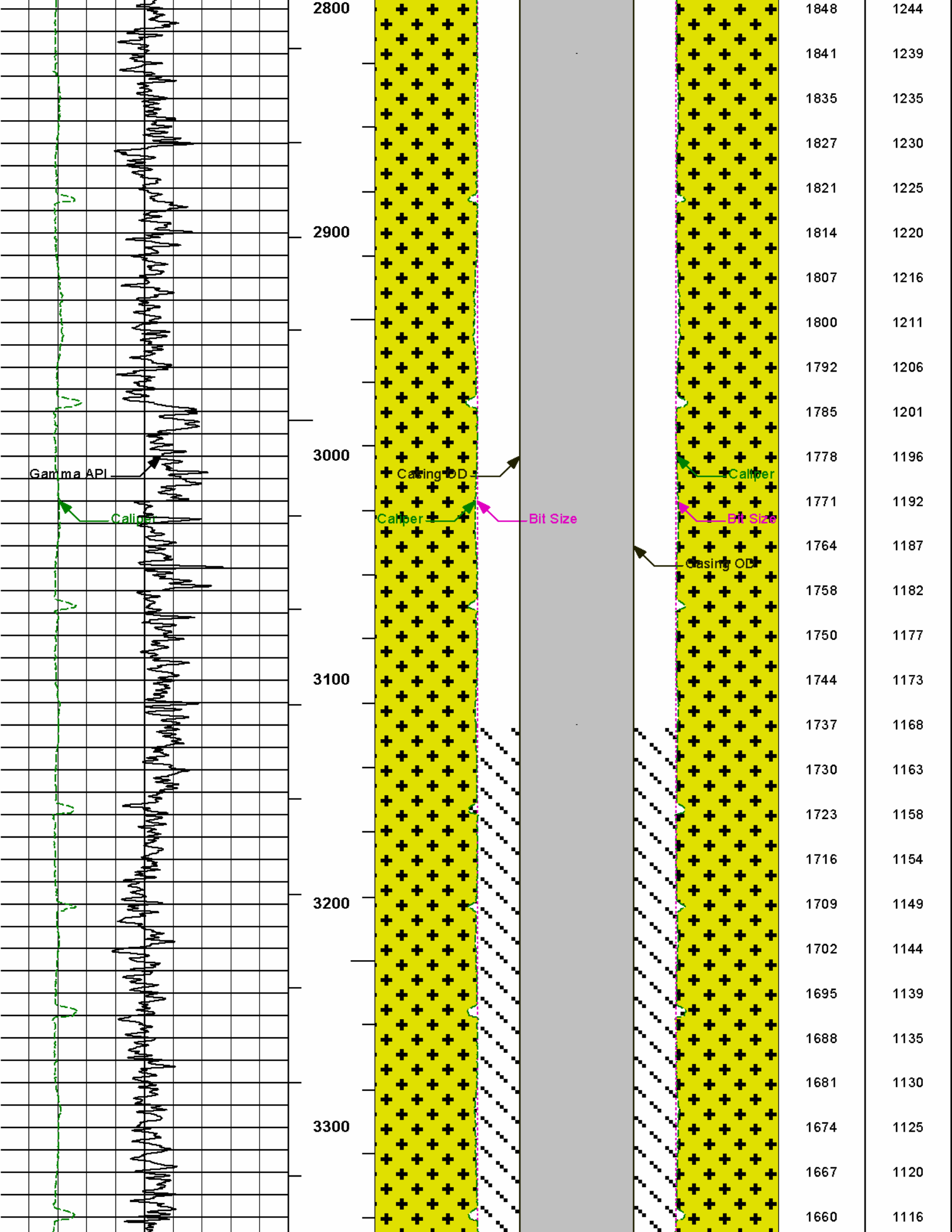
Service Ticket No.: 9302989						API Serial No.: 05123344690100						PGM Version: WL INSITE R3.4.4 (Build 2)											
CHANGE IN MUD TYPE OR ADDITIONAL SAMPLE												RESISTIVITY SCALE CHANGES											
Date		Sample No.										Type Log		Depth		Scale Up Hole				Scale Down Hole			
Depth-Driller																							
Type Fluid in Hole																							
Density		Viscosity																					
Ph		Fluid Loss																					
Source of Sample												RESISTIVITY EQUIPMENT DATA											
Rm @ Meas. Temp				@				@				Run No.		Tool Type & No.		Pad Type		Tool Pos.		Other			
Rmf @ Meas. Temp.				@				@				ONE		ACRt		N/A		FREE		N/A			
Rmc @ Meas. Temp.				@				@						E6758-S4352									
Source Rmf		Rmc																					
Rm @ BHT				@				@															
Rmf @ BHT				@				@															
Rmc @ BHT				@				@															
EQUIPMENT DATA																							
GAMMA				ACOUSTIC				DENSITY				NEUTRON											
Run No.		ONE		Run No.				Run No.		ONE		Run No.		ONE									
Serial No.		11277436		Serial No.				Serial No.		M335_P470		Serial No.		11812167									
Model No.		GTET		Model No.				Model No.		SDLT		Model No.		DSNT									
Diameter		3.625"		No. of Cent.				Diameter		4.5"		Diameter		3.625"									
Detector Model No.		GTET		Spacing				Log Type		GAM-GAM		Log Type		NEU-NEU									
Type		SCINT						Source Type		CS-137		Source Type		AM241BE									
Length		8"		LSA [Y/N]				Serial No.		GAM-GAM		Serial No.		NEU-NEU									
Distance to Source		10'		FWDA [Y/N]				Strength		1.5 CI		Strength		15 CI									
LOGGING DATA																							
GENERAL				GAMMA				ACOUSTIC				DENSITY				NEUTRON							

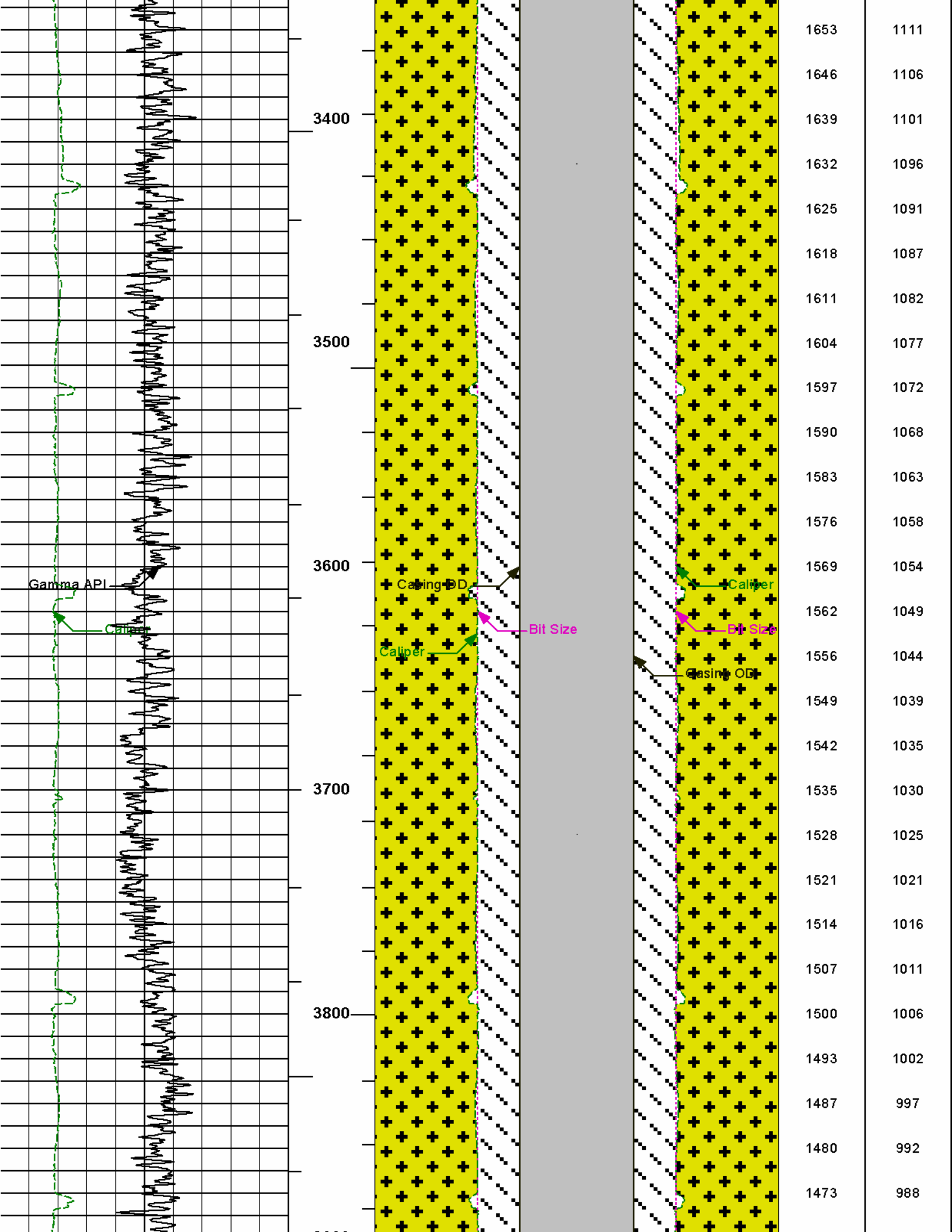


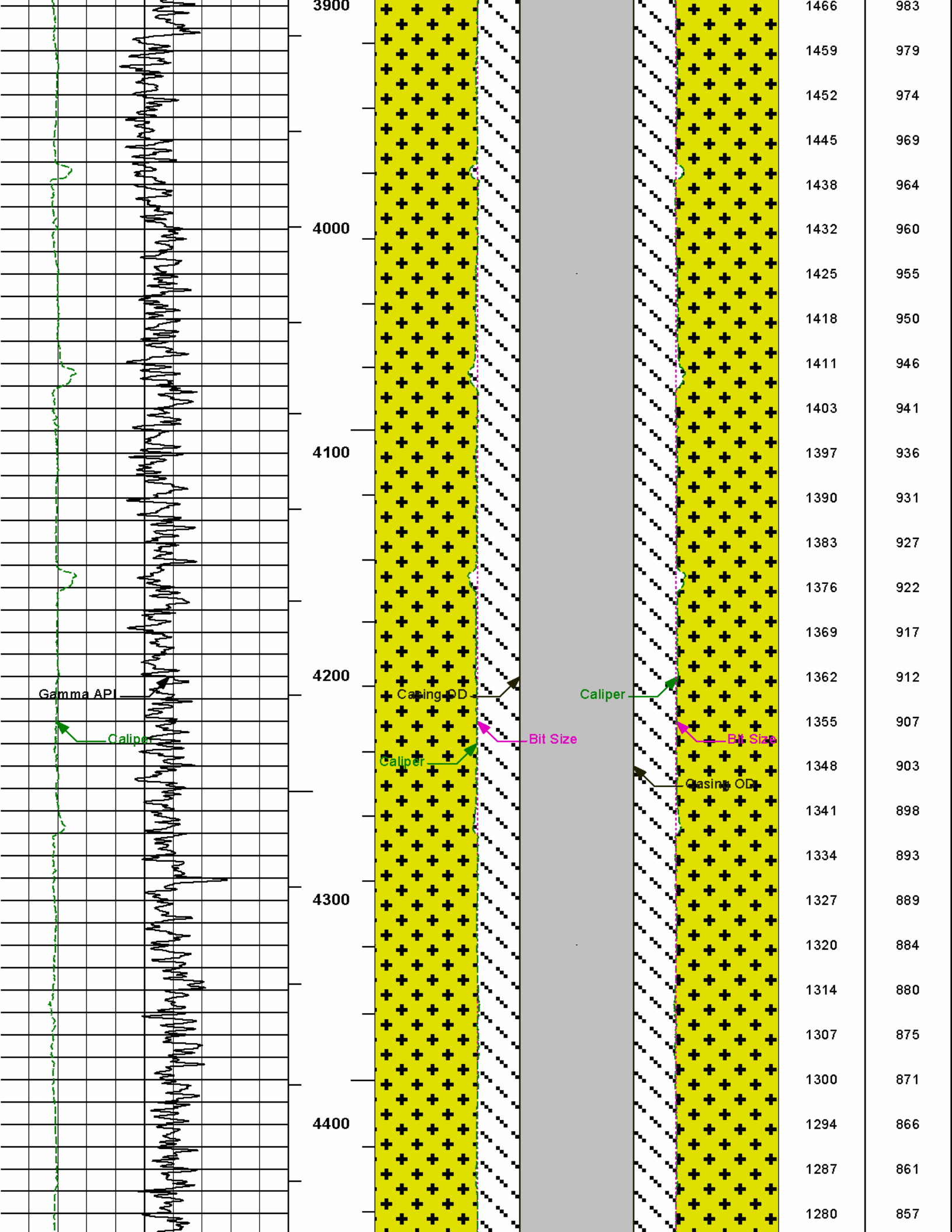


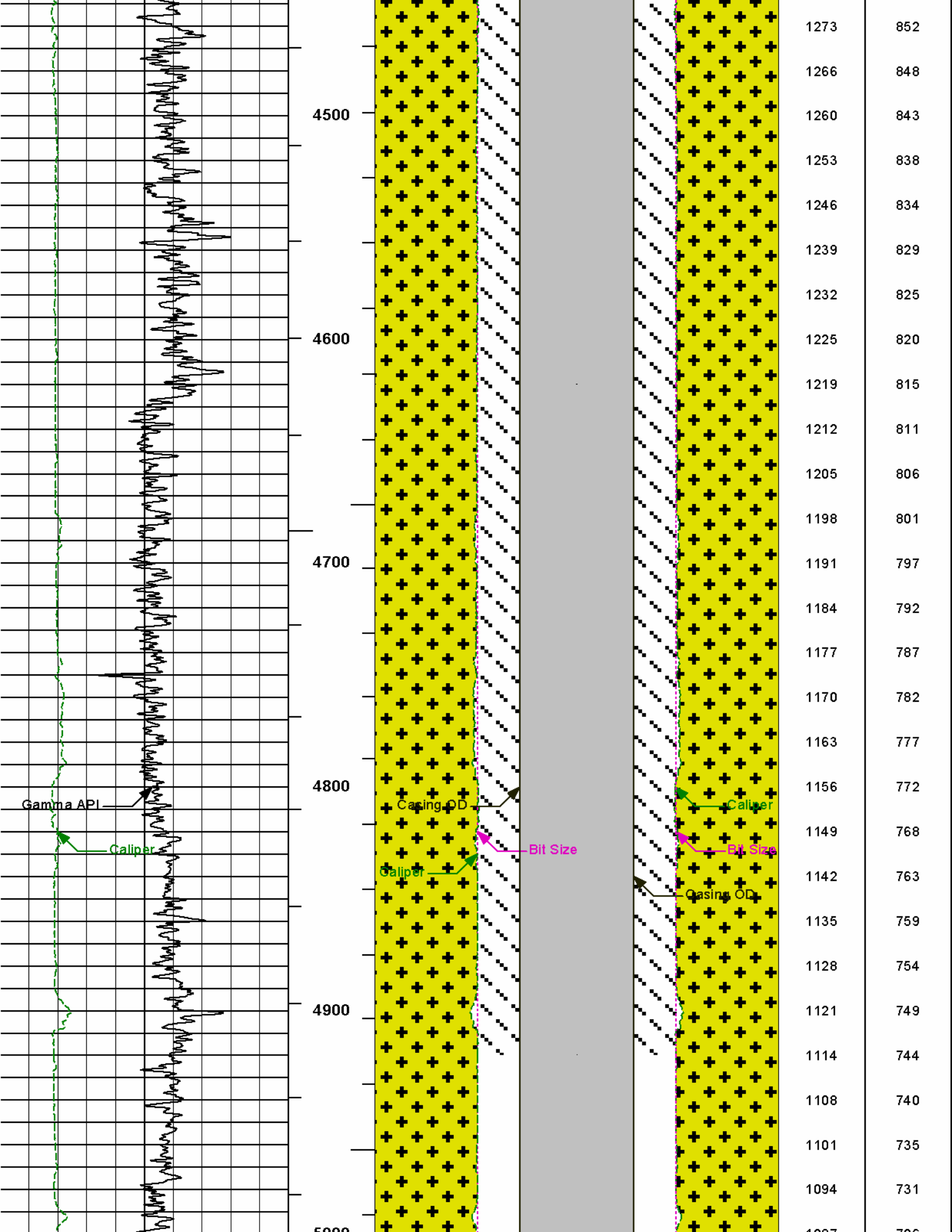


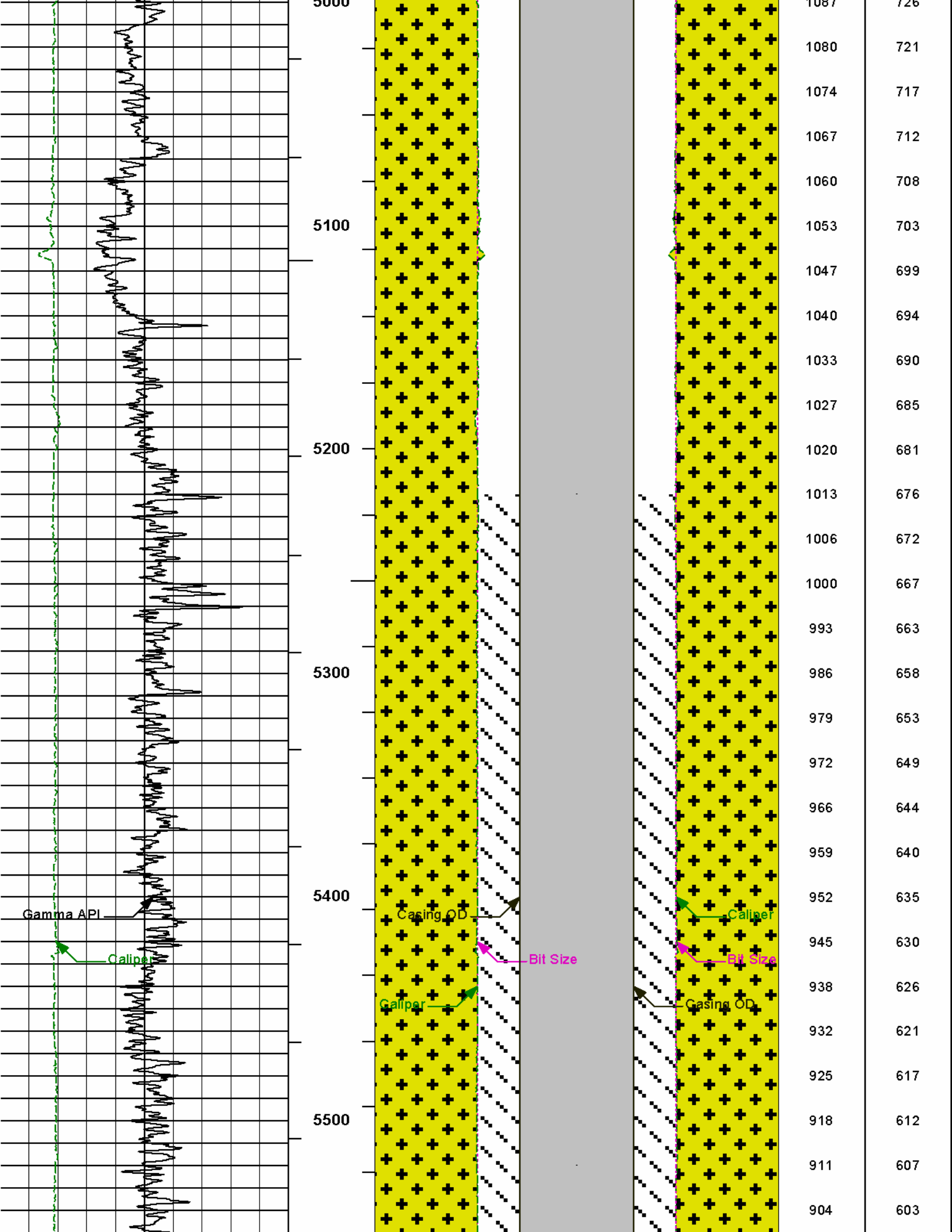


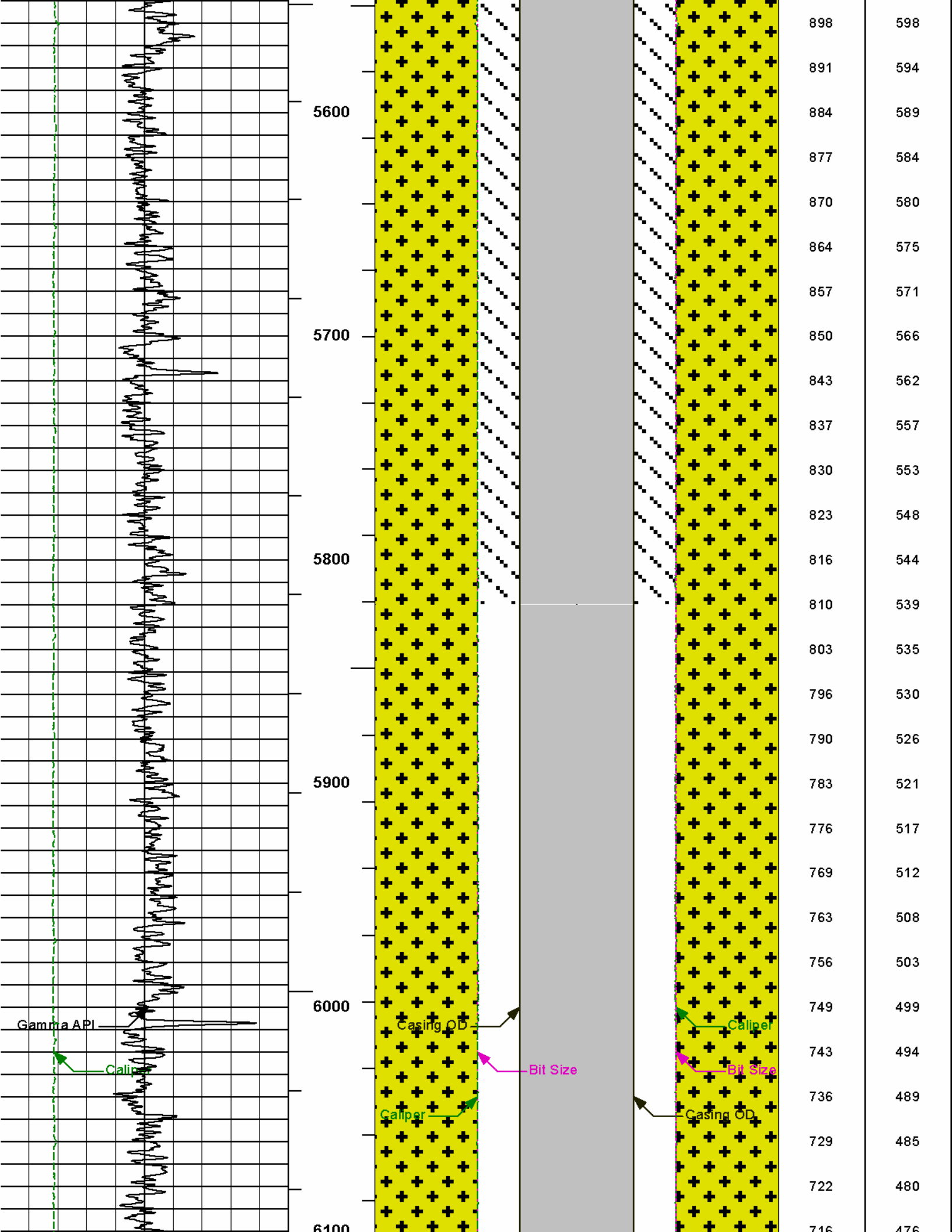


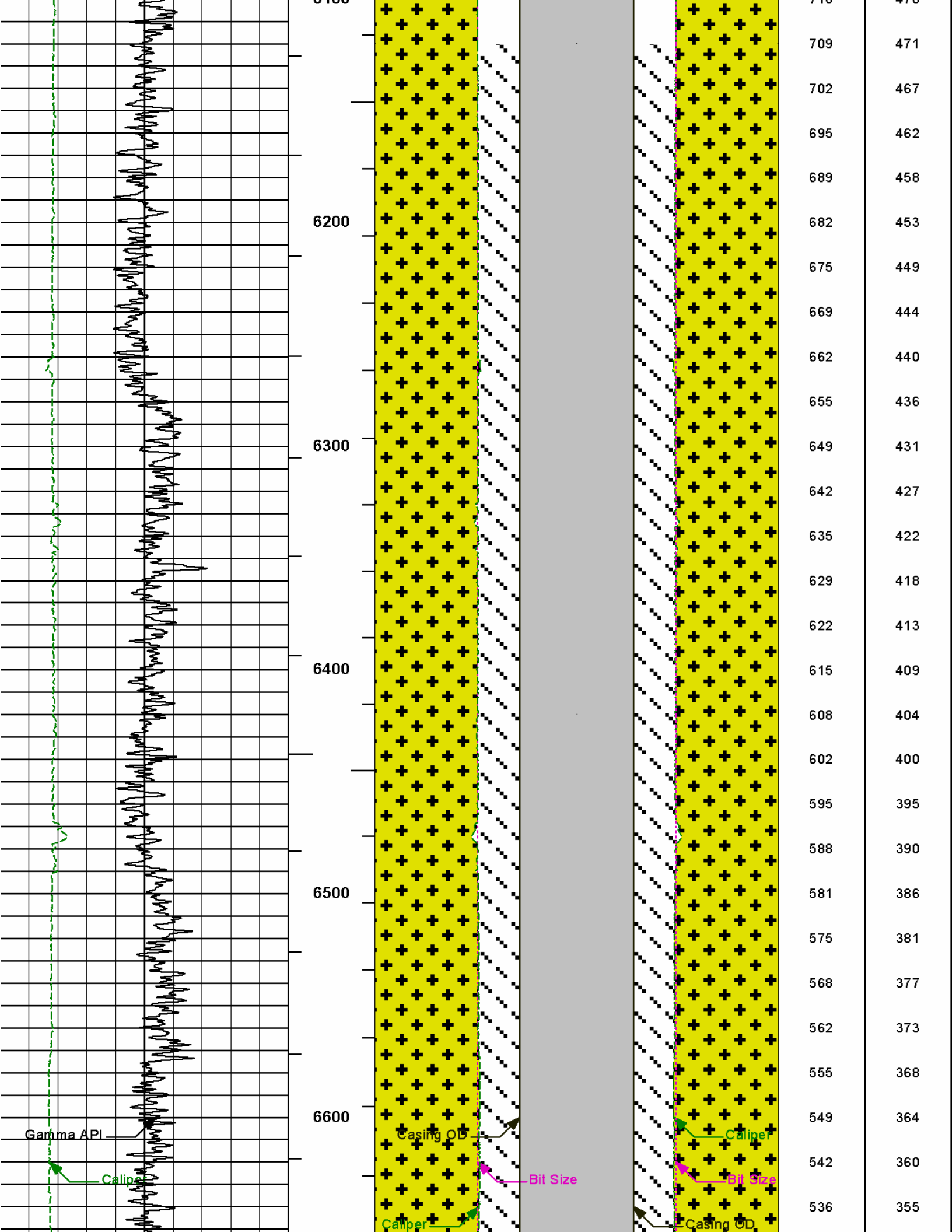


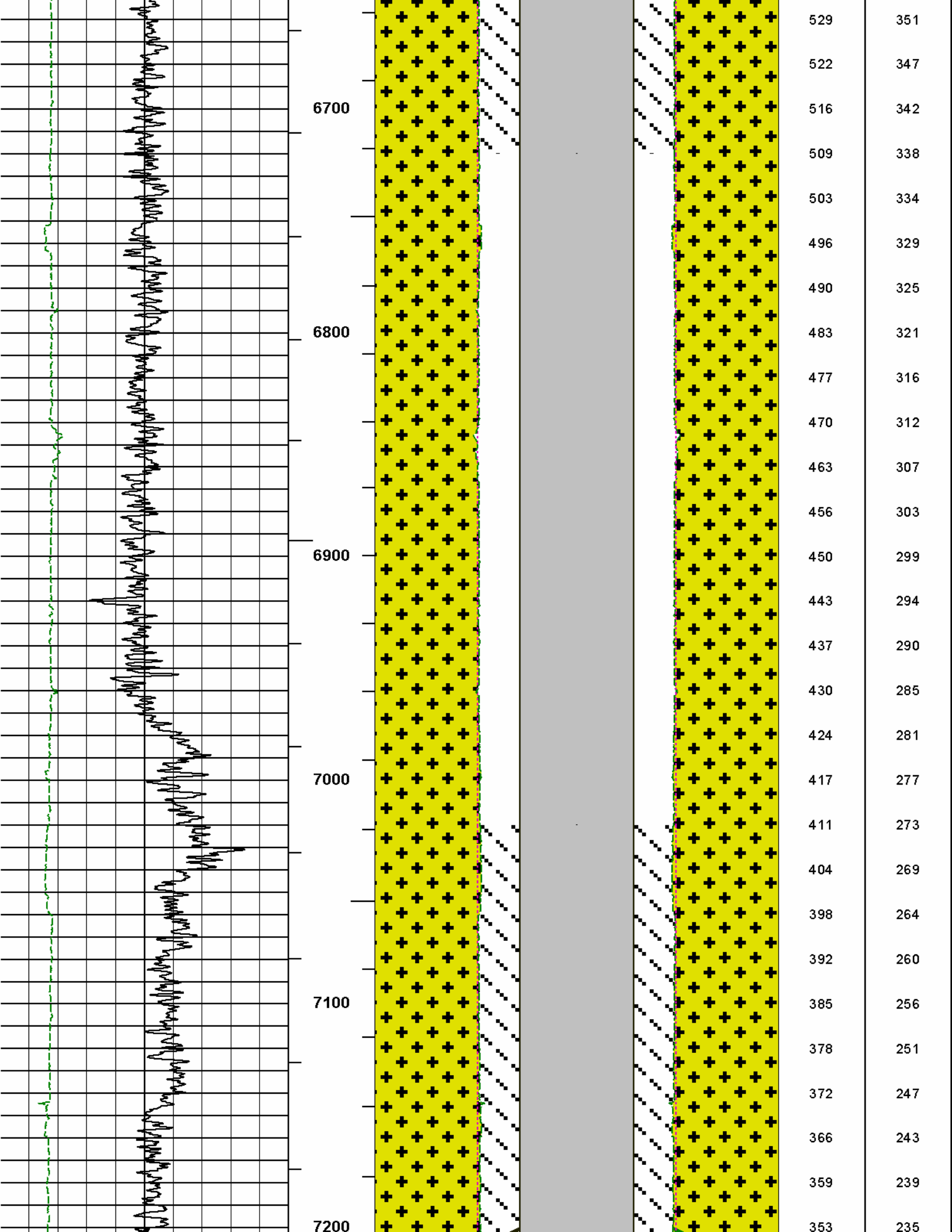


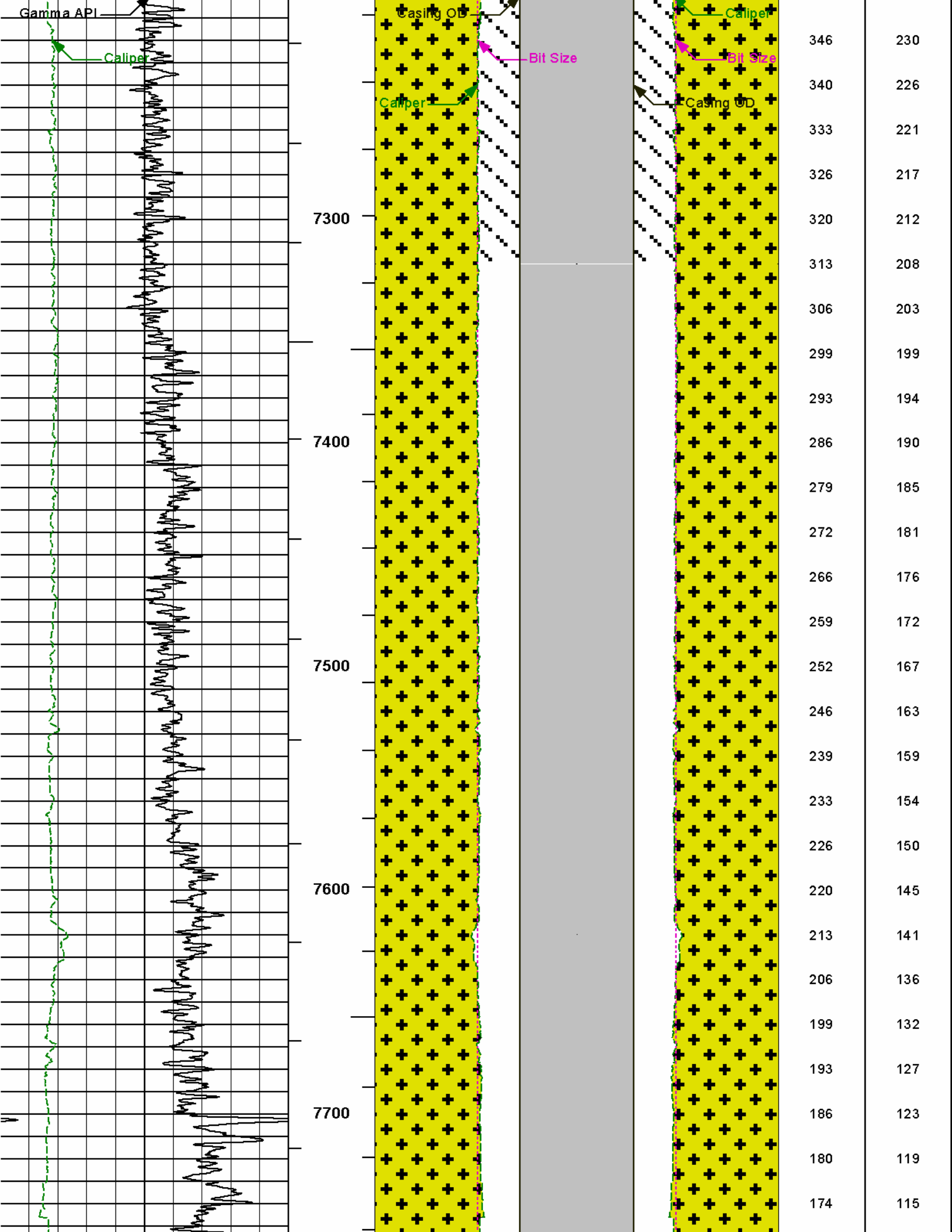


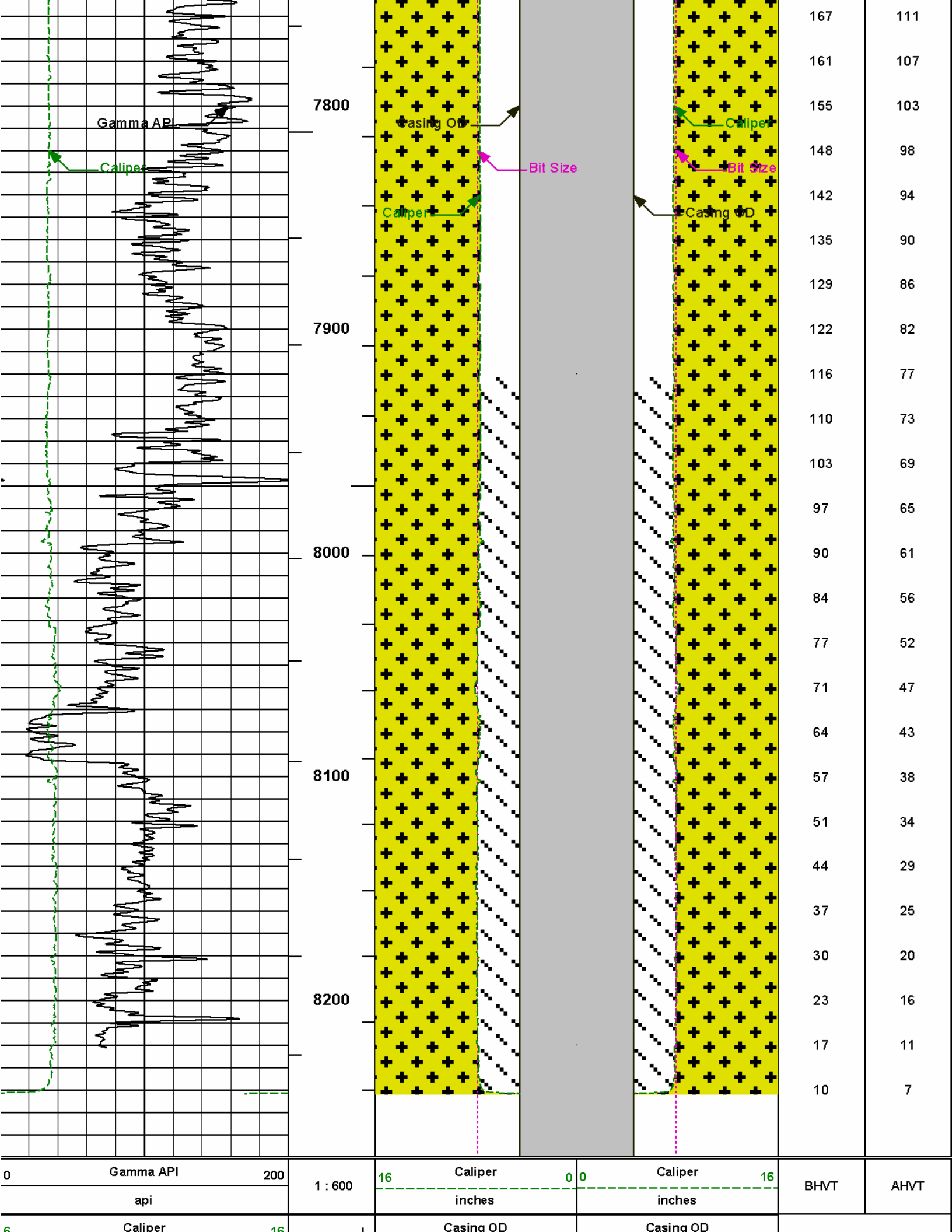












inches	BHVT		
	AHVT	16 Bit Size 0 0 Bit Size 16	
		inches	inches

HALLIBURTON

Plot Time: 28-Feb-12 17:09:00
Plot Range: 1020 ft to 8269.92 ft
Data: NG_STATE_19-36\Well Based\MAIN"
Plot File: \\BHVIQ_BHV_SDL_RM

AHV USES 4.5" CASING

COMPANY	KERR-MCGEE OIL & GAS ONSHORE LP		
WELL	NORTHGLENN STATE 19-36X		
FIELD	WATTENBERG		
COUNTY	WELD	STATE	CO
HALLIBURTON		BOREHOLE VOLUME	