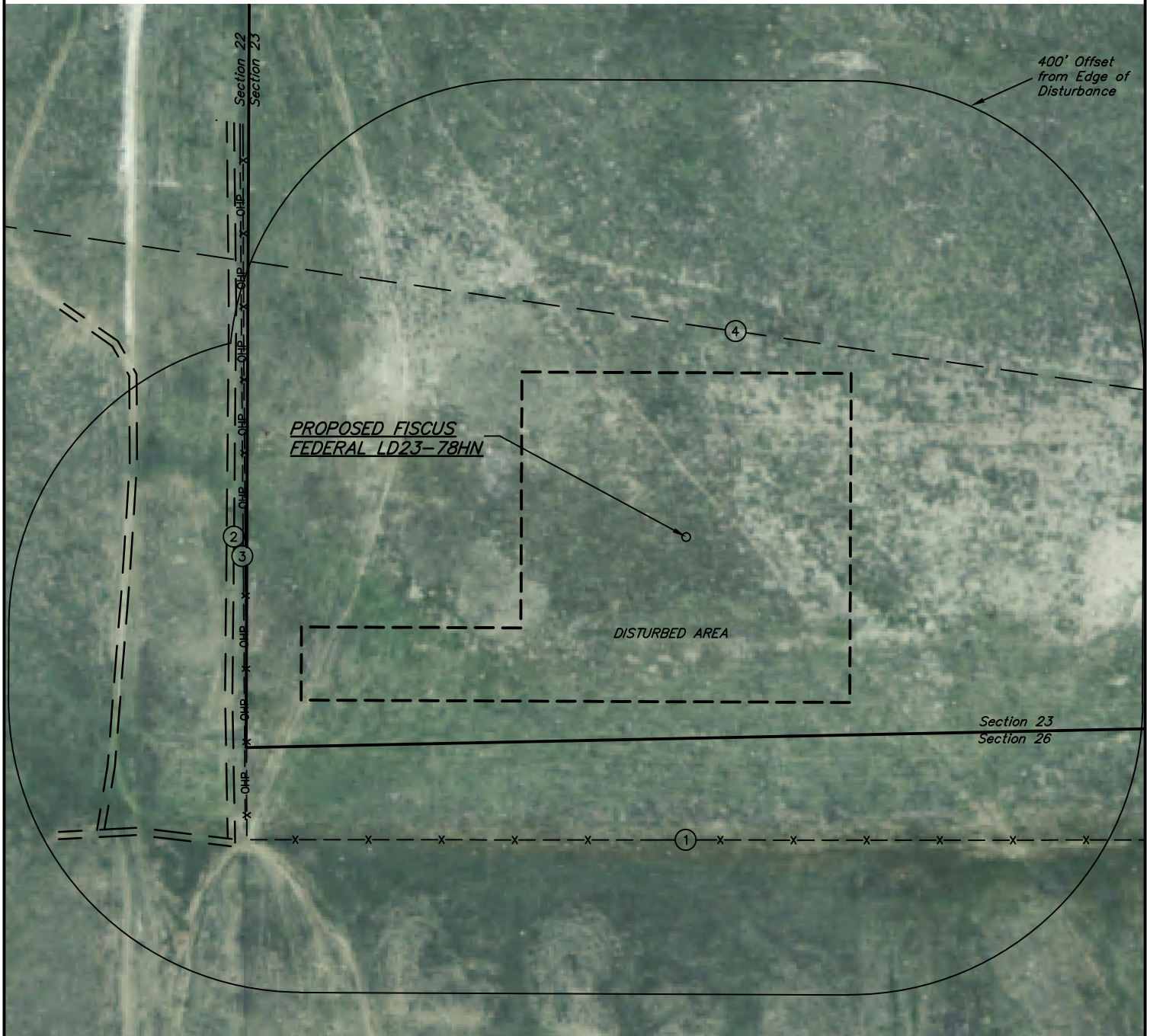


NOBLE ENERGY, INC.

LOCATION DRAWING

FISCUS FEDERAL LD23-78HN
SECTION 23, T9N, R58W, 6th P.M.

DATE: 11-02-12
DRAWN BY: B.D.H.
REVISED: 03-05-13



IMPROVEMENTS:

- ① FENCE 414' S, 602' W
- ② 2-TRACK 623' W, 744' SW, 755' W
- ③ POWER LINE 605' W
- ④ CABLE LINE 288' NE

NOTE:
DIRECTION AND DISTANCE TO IMPROVEMENTS
AND NEAREST FEATURES ARE FROM PROPOSED
FISCUS FEDERAL LD23-78HN.

NEAREST FEATURE: BUILDING 4556' NW, PUBLIC
ROAD 4725' NW (CR 104), ABOVE GROUND UTILITY
605' W, RAILROAD 5280' +, PROPERTY LINE 275' S

UINTAH ENGINEERING & LAND SURVEYING
85 So. 200 East * Vernal, Utah 84078 * (435) 789-1017