

**ENCANA OIL & GAS (USA) INC. - EBUS
DO NOT MAIL - 370 17TH ST STE 1700
DENVER, Colorado**

Dinner
Dinner 14-B-1

/Workover

Post Job Summary **Recement Service**

Date Prepared: 2/14/2013
Version: 1

Service Supervisor: PICKELL, CHRISTOPHER

Submitted by: WARD, DAVID

HALLIBURTON

HALLIBURTON

Wellbore Geometry

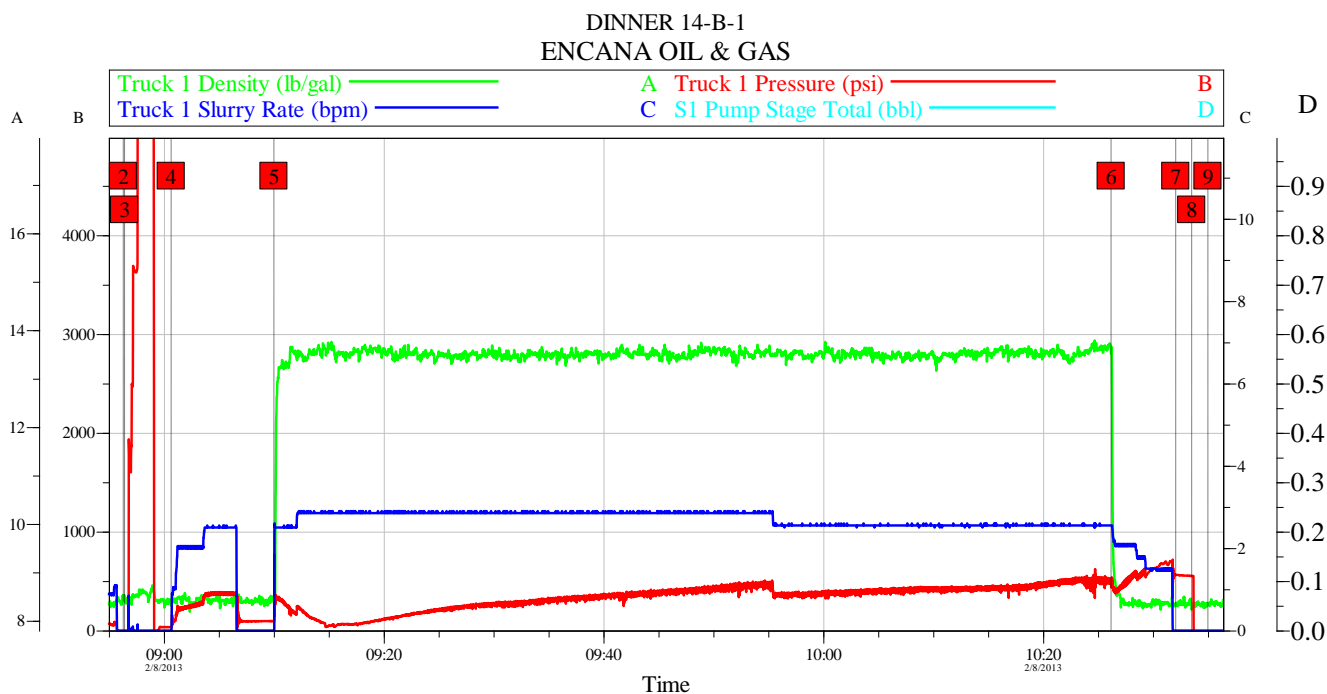
Job Tubulars					MD		Shoe Joint Length ft
Type	Description	Size in	ID in	Wt lbm/ft	Top ft	Bottom ft	
Tubing	2.375" Tubing	2.38	1.995	4.70	0.00	2,019.00	42.00
Casing	4.5" Production Casing	4.50	8.921		0.00	2,403.00	42.00
Open Hole Section	10" Open Hole Section		10.000		0.00	2,403.00	0.00

HALLIBURTON

Pumping Schedule

Stage /Plug #	Fluid #	Fluid Type	Fluid Name	Surface Density lbm/gal	Avg Rate bbl/min	Surface Volume	Downhole Volume
1	1	Spacer	Fresh Water Spacer	8.33	3.00		15 bbl
1	2	Cement Slurry	Rockies Varicem R1	13.50	3.00	700.0 sacks	700.0 sacks

Data Acquisition



Global Event Log			
Intersection	TIP	Intersection	TIP
2 Start Job	08:56:18 -1.939	3 Test Lines	08:56:25 -1.939
4 Injection Test	09:00:39 34.59	5 Pump Rockies Varicem 13.5#	09:10:00 95.02
6 Pump Displacement	10:26:11 485.0	7 Shutdown	10:32:04 562.6
8 Shut in Well	10:33:31 552.0	9 End Job	10:34:59 -13.57

Customer:	Job Date: 08-Feb-2013	Sales Order #: 900205938
Well Description:	UWI:	

OptiCem v6.4.10
08-Feb-13 10:59

HALLIBURTON

Service Supervisor Reports

Job Log

Date/Time	Chart #	Activity Code	Pump Rate	Cum Vol	Pump		Pressure (psig)	Comments
02/08/2013 06:00		Arrive At Loc						ARRIVE AT LOCATION FROM THE YARD
02/08/2013 06:15		Pre-Rig Up Safety Meeting						HAZARD HUNT PERFORMED AND RIG UP PLANNED
02/08/2013 06:30		Rig-Up Equipment						SPOT IN TRUCKS. RIG UP BULK TRUCKS AND HARD IRON
02/08/2013 08:00		Safety Huddle						SAFETY MEETING WITH ALL PERSONEL ON LOCATION TO DISCUSS JOB SAFETY AND PROCEDURE
02/08/2013 08:56		Start Job						
02/08/2013 08:56		Test Lines	1	1			5000.0	PRESSURE TEST LINES TO 5000 PSI. CHECK FOR VISIBLE LEAKS AND PRESSURE LOSS
02/08/2013 09:00		Injection Test	2.5	15			400.0	PUMP WATER TO ESTABLISH AN INJECTION RATE
02/08/2013 09:10		Pump Cement	2.8	208			450.0	PUMP ROCKIES VARICEM CEMENT 700 SKS 13.5 PPG 1.67 CUFT/SK 8.51 GAL/SK MIXED WITH 3RD PARTY WATER
02/08/2013 10:26		Pump Displacement	1	10.8			600.0	PUMP DISPLACEMENT LEAVING 100 FT OF CEMENT ABOVE THE TOP PERFS
02/08/2013 10:32		Shutdown						22 BBL OF CEMENT BACK TO SURFACE
02/08/2013 10:33		Shut In Well					552.0	SHUT IN WELL WITH 552 PSI
02/08/2013 10:34		End Job						
02/08/2013 10:40		Pre-Rig Down Safety Meeting						SAFETY MEETING FOR RIG DOWN PROCEDURES
02/08/2013 10:50		Rig-Down Equipment						RIG DOWN ALL EQUIPMENT ON LOCATION
02/08/2013 11:30		Safety Meeting - Departing Location						SAFETY MEETING TO DISCUSS JOURNEY BACK TO THE YARD

The Road to Excellence Starts with Safety

Sold To #: 340078		Ship To #: 2979818		Quote #:		Sales Order #: 900205938	
Customer: ENCANA OIL & GAS (USA) INC. - EBUS				Customer Rep: Russell, Jack			
Well Name: Dinner			Well #: 14-B-1		API/UWI #: 05-123--17813		
Field: WATTENBURG		City (SAP): GILCREST		County/Parish: Weld		State: Colorado	
Lat: N 40.306 deg. OR N 40 deg. 18 min. 23.004 secs.				Long: W 104.747 deg. OR W -105 deg. 15 min. 10.127 secs.			
Job Purpose: Recement Service							
Well Type: Development Well				Job Type: Recement Service			
Sales Person: AARON, WESLEY				Srvc Supervisor: PICKELL, CHRISTOPHER		MBU ID Emp #: 396838	
Job Personnel							
HES Emp Name	Exp Hrs	Emp #	HES Emp Name	Exp Hrs	Emp #	HES Emp Name	Exp Hrs
DODSON, RICHARD Bryan	0.0	518192	JEWELL, WILLIAM Uris	0.0	503358	PICKELL, CHRISTOPHER Lee	0.0
WILEY, JAMES A	0.0	440080					
Equipment							
HES Unit #	Distance-1 way	HES Unit #	Distance-1 way	HES Unit #	Distance-1 way	HES Unit #	Distance-1 way
10824253C	23 mile	11562546C	23 mile	11566182	23 mile	11605597	23 mile
11808819C	23 mile	11923776C	23 mile				
Job Hours							
Date	On Location Hours	Operating Hours	Date	On Location Hours	Operating Hours	Date	On Location Hours
TOTAL		<i>Total is the sum of each column separately</i>					
Job				Job Times			
Formation Name				Date		Time	Time Zone
Formation Depth (MD)	Top	Bottom		Called Out	08 - Feb - 2013	02:30	MST
Form Type	BHST			On Location	08 - Feb - 2013	06:00	MST
Job depth MD	2403. ft	Job Depth TVD	2403. ft	Job Started	08 - Feb - 2013	08:56	MST
Water Depth		Wk Ht Above Floor	5. ft	Job Completed	08 - Feb - 2013	10:34	MST
Perforation Depth (MD)	From	To		Departed Loc	08 - Feb - 2013	11:30	MST
Well Data							
Description	New / Used	Max pressure psig	Size in	ID in	Weight lbm/ft	Thread	Grade
10" Open Hole Section				10.			
4.5" Production Casing	Unknown		4.5	8.921			J-55
2.375" Tubing	Unknown		2.375	1.995	4.7		HCP110
Tools and Accessories							
Type	Size	Qty	Make	Depth	Type	Size	Qty
Guide Shoe					Packer		
Float Shoe					Bridge Plug		
Float Collar					Retainer		

Insert Float										Plug Container			
Stage Tool										Centralizers			

Miscellaneous Materials

Gelling Agt		Conc		Surfactant		Conc		Acid Type		Qty		Conc	%
Treatment Fld		Conc		Inhibitor		Conc		Sand Type		Size		Qty	

Fluid Data

Stage/Plug #: 1

Fluid #	Stage Type	Fluid Name	Qty	Qty uom	Mixing Density lbm/gal	Yield ft3/sk	Mix Fluid Gal/sk	Rate bbl/min	Total Mix Fluid Gal/sk
1	Fresh Water Spacer		15	bbl	8.33			3.0	
2	Rockies Varicem R1	SWIFTCM (TM) SYSTEM (452990)	700.0	sacks	13.5	1.67	8.51	3.0	8.51
8.51 Gal		FRESH WATER							

Calculated Values

Pressures

Volumes

Displacement		Shut In: Instant		Lost Returns		Cement Slurry		Pad	
Top Of Cement		5 Min		Cement Returns		Actual Displacement		Treatment	
Frac Gradient		15 Min		Spacers		Load and Breakdown		Total Job	

Rates

Circulating		Mixing		Displacement		Avg. Job	
Cement Left In Pipe	Amount	42 ft	Reason	Shoe Joint			
Frac Ring # 1 @	ID	Frac ring # 2 @	ID	Frac Ring # 3 @	ID	Frac Ring # 4 @	ID

The Information Stated Herein Is Correct	Customer Representative Signature
--	-----------------------------------

