

EnCana Oil & Gas (USA) Inc.

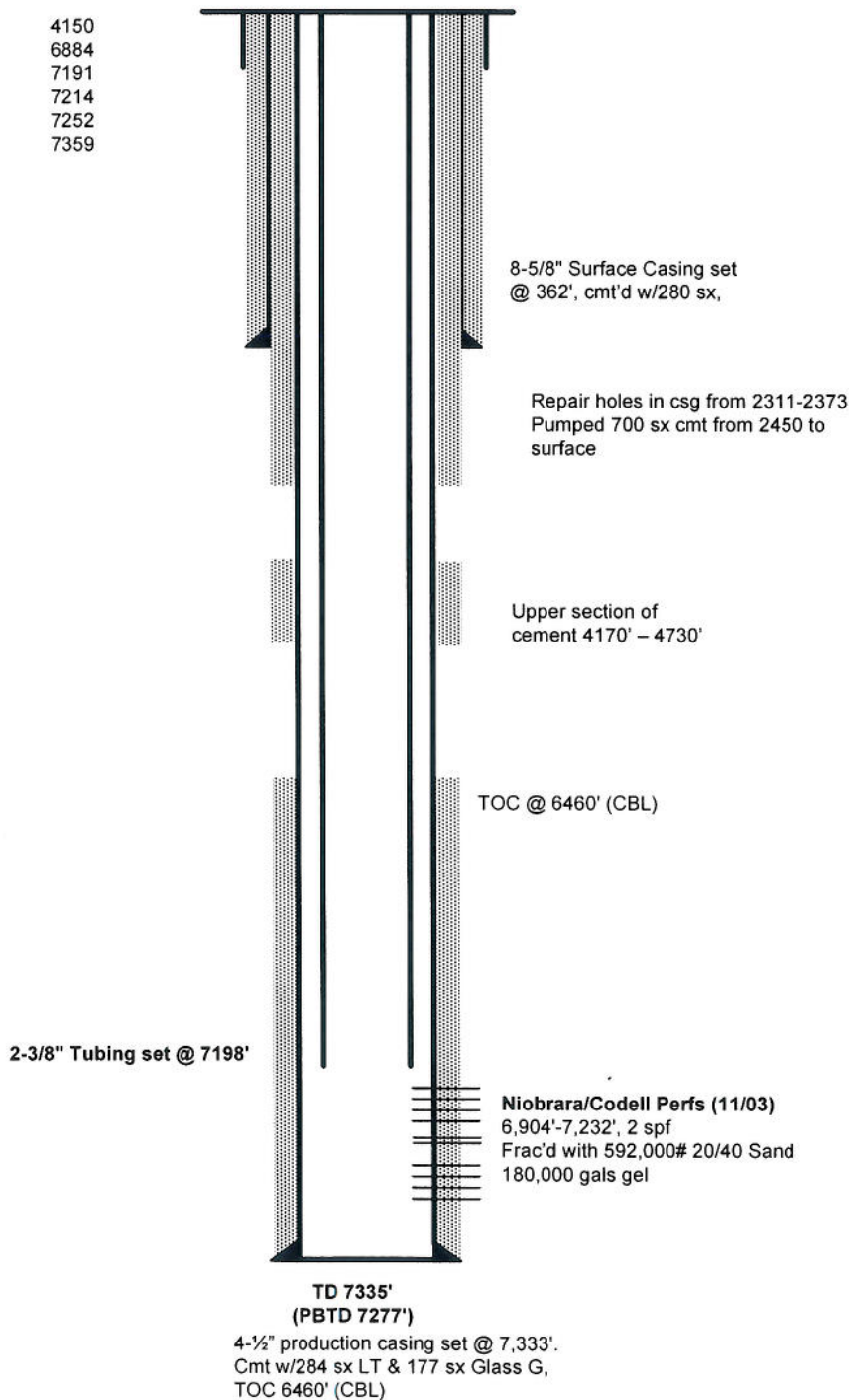
Well : Dinner 14-B-1
Field : Wattenberg
County : Weld County **State** : Colorado
Surface : Lat: 40.306166 Long: -104.74716
: 614' FSL, 1902' FEL, SWSE Sec 14-T4N-R66W
API # : 05-123-17813
Grd Elev : 4,722' GR **KB Elevation**: 4,732' KB

Log Tops:

Sussex	4150
Niobrara	6884
Fort Hays	7191
Codell	7214
Greenhorn	7252
Log TD	7359

Well History:

Spud	01/06/94
TD	01/11/94
Completion	02/04/94



Drawn by:

Jane Washburn

Date:

3/5/2012