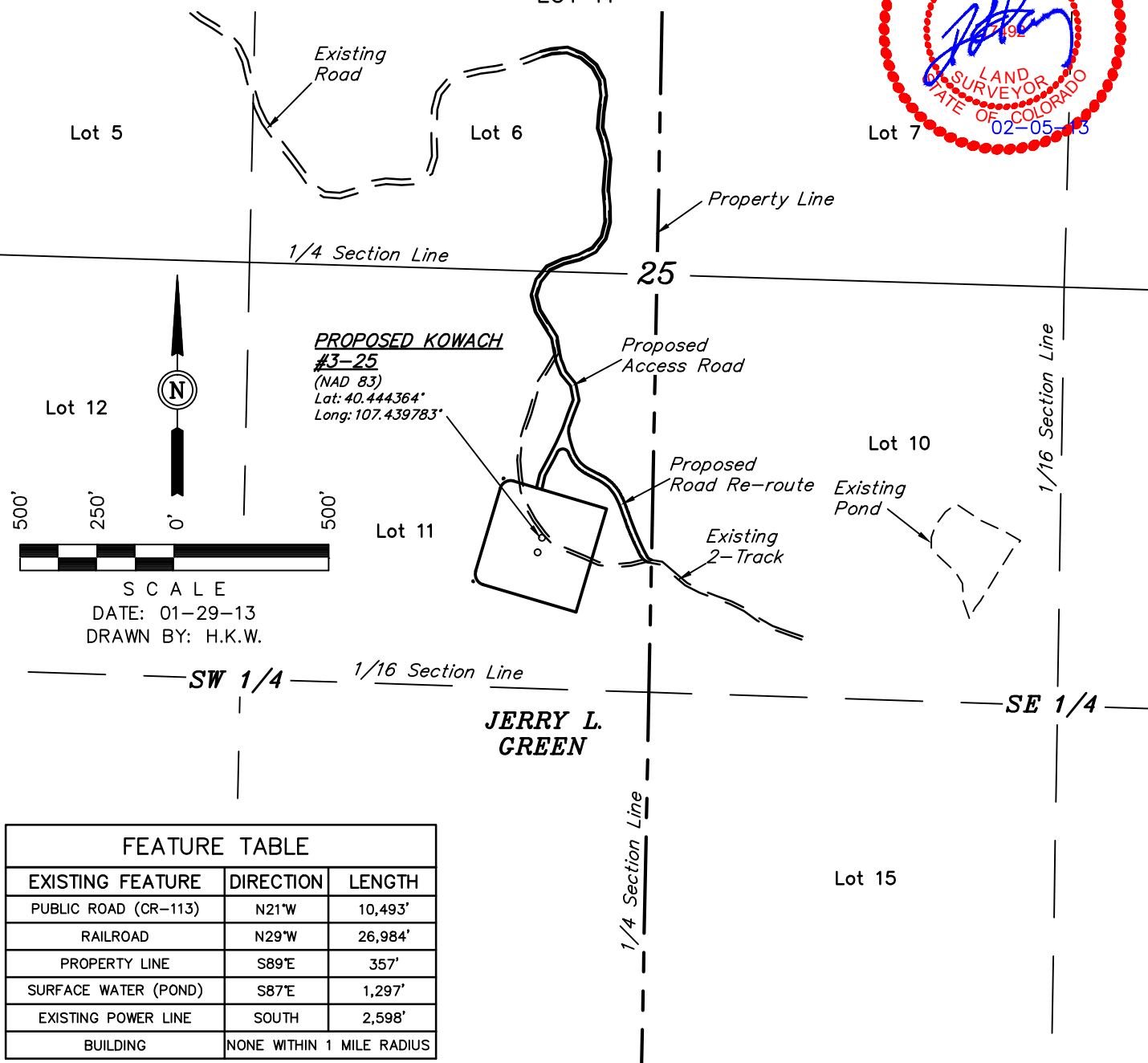


# PetroShare Corp.

## LOCATION DRAWING FOR

KOWACH #3-25 & VOLOSHIN #3-25  
SECTION 25, T6N, R90W, 6th. P.M.  
LOT 11

FIGURE #5



### FEATURE TABLE

EXISTING FEATURE	DIRECTION	LENGTH
PUBLIC ROAD (CR-113)	N21°W	10,493'
RAILROAD	N29°W	26,984'
PROPERTY LINE	S89°E	357'
SURFACE WATER (POND)	S87°E	1,297'
EXISTING POWER LINE	SOUTH	2,598'
BUILDING	NONE WITHIN 1 MILE RADIUS	

### PLANT COMMUNITY

- ☐ DISTURBED GRASSLAND
- ☐ NATIVE GRASSLAND
- ☐ SHRUB LAND
- ☐ PLAINS RIPARIAN
- ☐ MOUNTAIN RIPARIAN
- ☐ FOREST LAND
- ☐ WETLANDS AQUATIC
- ☐ ALPINE
- ☐ OTHER (Describe): \_\_\_\_\_

### CURRENT LAND USE

- CROP LAND: ☐ IRRIGATED ☐ DRY LAND ☐ IMPROVED PASTURE ☐ HAY MEADOW ☐ CRP
- NON-CROP LAND: ☐ RANGELAND ☐ TIMBER ☐ RECREATIONAL ☐ OTHER (Describe) \_\_\_\_\_
- SUBDIVIDED: ☐ INDUSTRIAL ☐ COMMERCIAL ☐ RESIDENTIAL

### FUTURE LAND USE

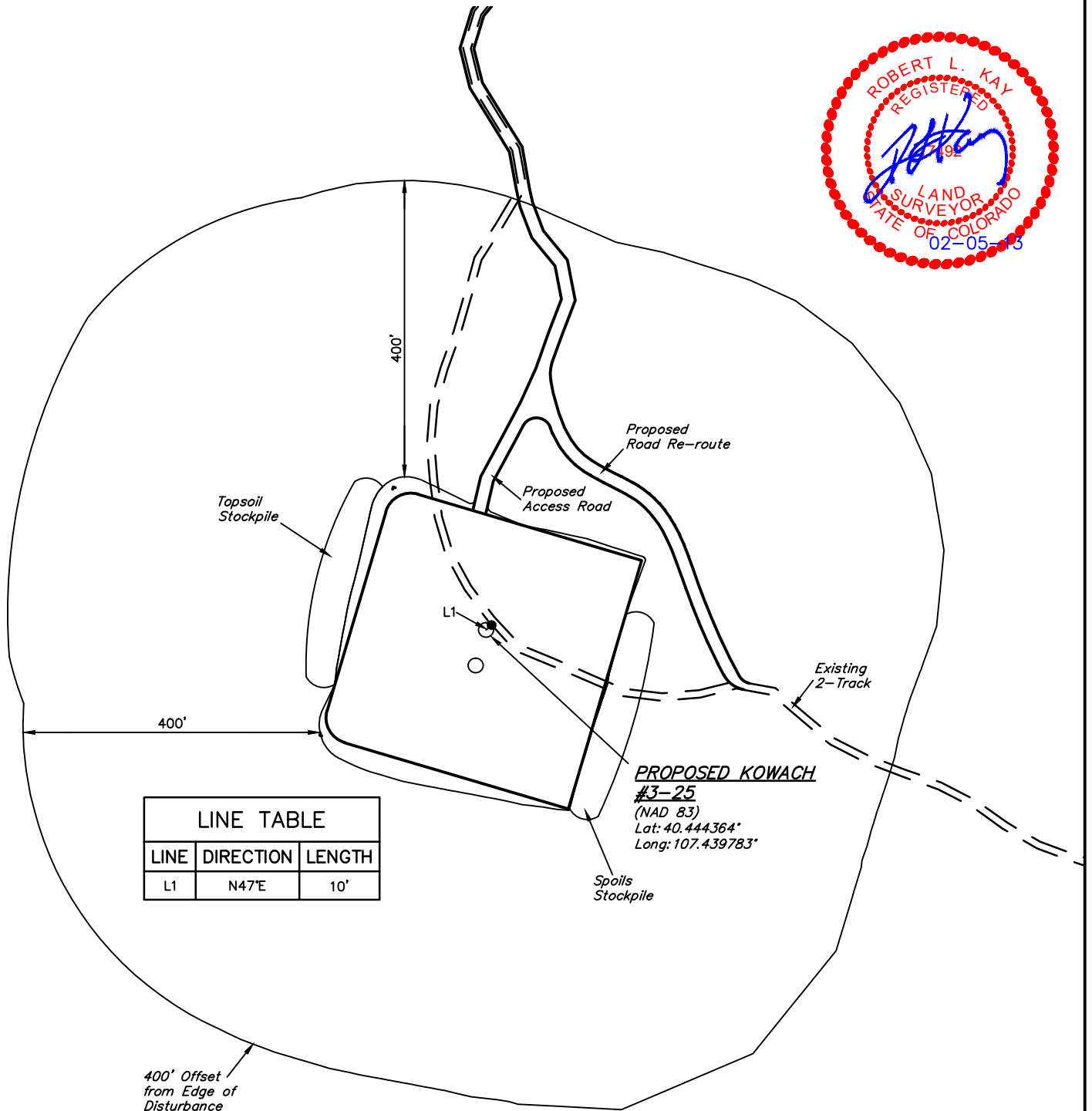
- CROP LAND: ☐ IRRIGATED ☐ DRY LAND ☐ IMPROVED PASTURE ☐ HAY MEADOW ☐ CRP
- NON-CROP LAND: ☐ RANGELAND ☐ TIMBER ☐ RECREATIONAL ☐ OTHER (Describe) \_\_\_\_\_
- SUBDIVIDED: ☐ INDUSTRIAL ☐ COMMERCIAL ☐ RESIDENTIAL



**PetroShare Corp.**  
**LOCATION DRAWING DETAIL FOR**  
**KOWACH #3-25 & VOLOSHIN #3-25**  
**SECTION 25, T6N, R90W, 6th. P.M.**  
**LOT 11**

**FIGURE #5A**

SCALE: 1" = 200'  
DATE: 01-29-13  
DRAWN BY: H.K.W.



LINE TABLE		
LINE	DIRECTION	LENGTH
L1	N47°E	10'