

PetroShare Corp.

CONSTRUCTION LAYOUT FOR

KOWACH #3-25 & VOLOSHIN #3-25  
SECTION 25, T6N, R90W, 6th. P.M.  
LOT 11

FIGURE #1

SCALE: 1" = 60'

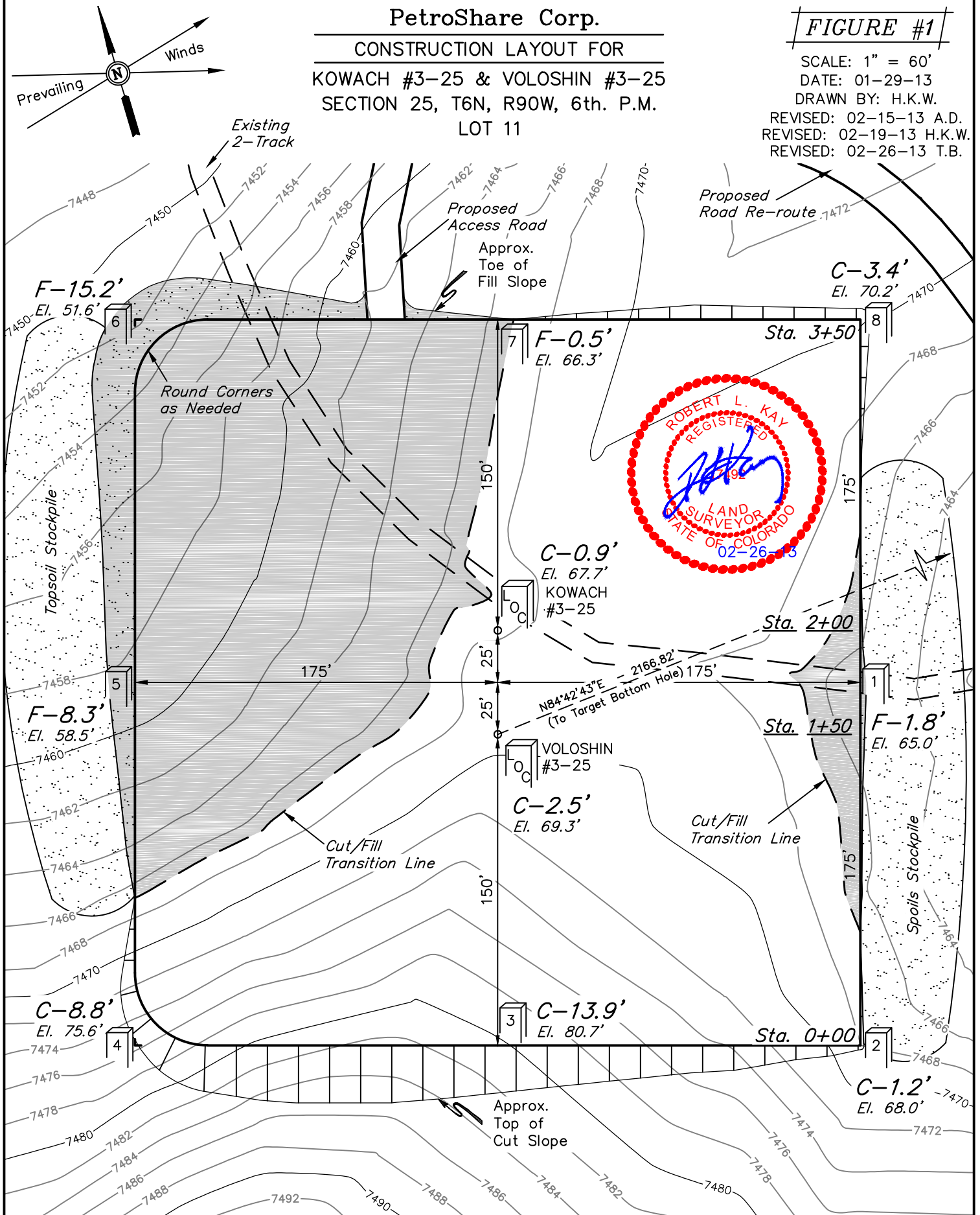
DATE: 01-29-13

DRAWN BY: H.K.W.

REVISED: 02-15-13 A.D.

REVISED: 02-19-13 H.K.W.

REVISED: 02-26-13 T.B.

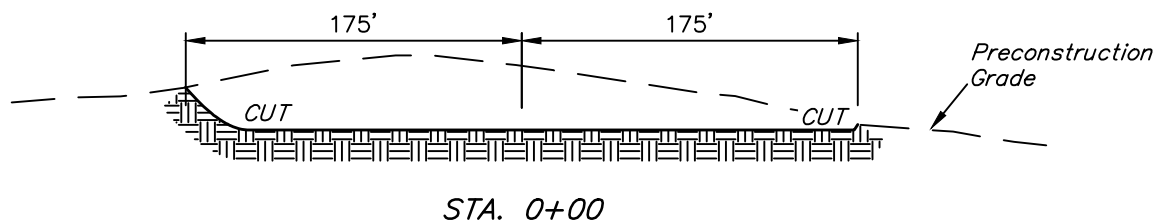
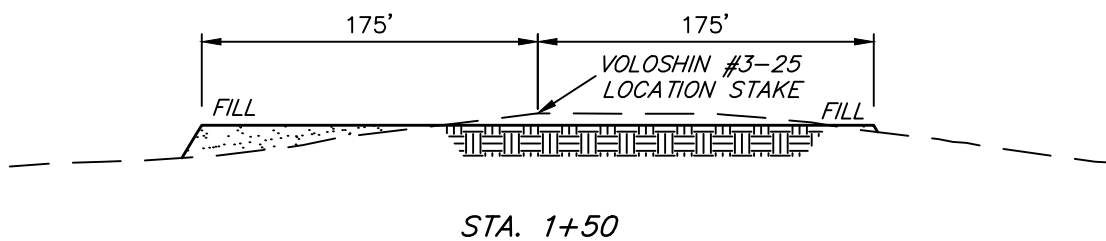
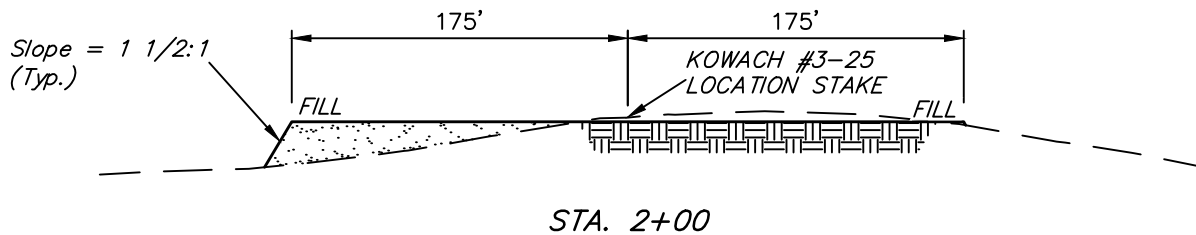
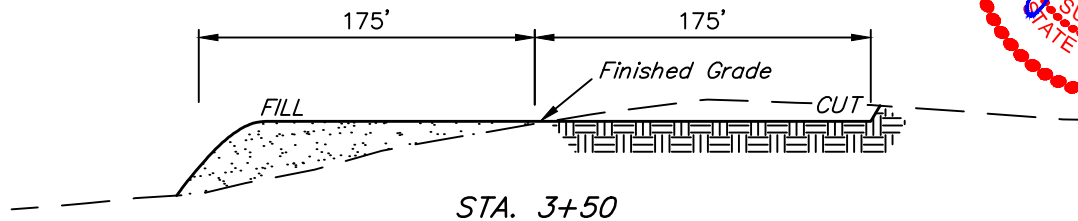


Elev. Ungraded Ground At KOWACH #3-25 Loc. Stake = 7467.7', UINTEH ENGINEERING & LAND SURVEYING  
FINISHED GRADE ELEV. AT KOWACH #3-25 LOC. STAKE = 7466.8' 85 So. 200 East \* Vernal, Utah 84078 \* (435) 789-1017

1" = 40'  
X-Section  
Scale  
1" = 100'  
DATE: 01-29-13  
DRAWN BY: H.K.W.

**PetroShare Corp.**  
**CONSTRUCTION LAYOUT CROSS SECTIONS FOR**  
**KOWACH #3-25 & VOLOSHIN #3-25**  
**SECTION 25, T6N, R90W, 6th. P.M.**  
**LOT 11**

**FIGURE #2**



**NOTE:**

Topsoil should not be Stripped Below Finished Grade on Substructure Area.

**APPROXIMATE ACREAGES**  
WELL SITE DISTURBANCE = ± 3.729 ACRES  
ACCESS ROAD DISTURBANCE = ± 1.186 ACRES  
TOTAL = ± 4.915 ACRES

**\* NOTE:**  
FILL QUANTITY INCLUDES 5% FOR COMPACTION

**APPROXIMATE YARDAGES**

(6") Topsoil Stripping = 2,530 Cu. Yds.  
Remaining Location = 11,800 Cu. Yds.  
**TOTAL CUT = 14,330 CU. YDS.**  
**FILL = 9,300 CU. YDS.**

Cu. Yds.  
EXCESS MATERIAL = 5,030 Cu. Yds.  
Topsoil = 2,530  
EXCESS UNBALANCE = 2,500 Cu. Yds.  
(After Interim Rehabilitation)

**UINTAH ENGINEERING & LAND SURVEYING**  
85 So. 200 East \* Vernal, Utah 84078 \* (435) 789-1017

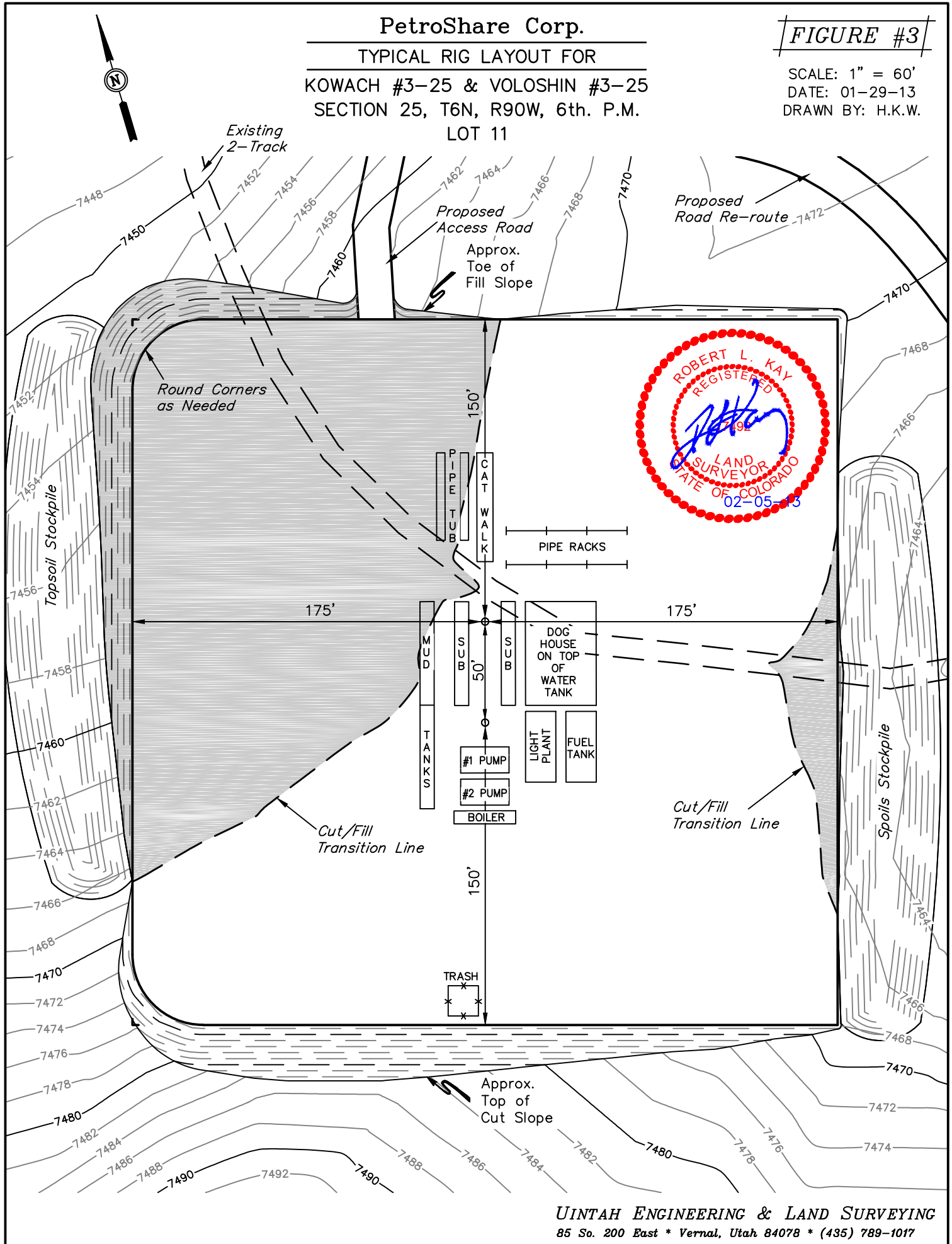
PetroShare Corp.

TYPICAL RIG LAYOUT FOR

KOWACH #3-25 & VOLOSHIN #3-25  
SECTION 25, T6N, R90W, 6th. P.M.  
LOT 11

FIGURE #3

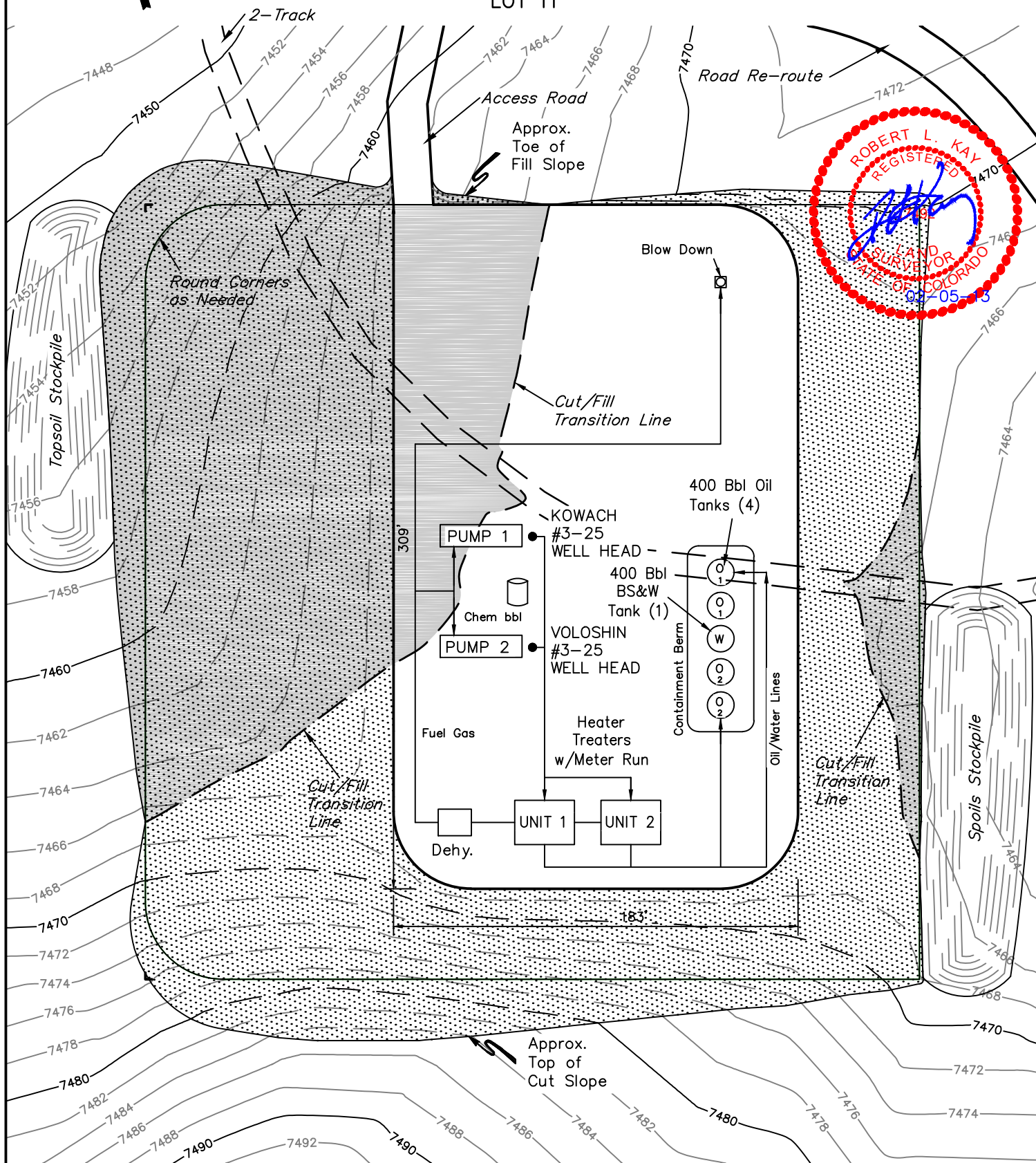
SCALE: 1" = 60'  
DATE: 01-29-13  
DRAWN BY: H.K.W.



**PetroShare Corp.**  
**RECLAMATION DIAGRAM FOR**  
**KOWACH #3-25 & VOLOSHIN #3-25**  
**SECTION 25, T6N, R90W, 6th. P.M.**  
**LOT 11**

**FIGURE #4**

SCALE: 1" = 60'  
 DATE: 01-29-13  
 DRAWN BY: H.K.W.



**ROBERT L. KAY**  
 REGISTERED  
 LAND SURVEYOR  
 STATE OF COLORADO  
 05-05-13



RECLAIMED AREA

**APPROXIMATE ACREAGES**  
 UN-RECLAIMED = ± 1.178 ACRES

**UINTAH ENGINEERING & LAND SURVEYING**  
 85 So. 200 East \* Vernal, Utah 84078 \* (435) 789-1017